

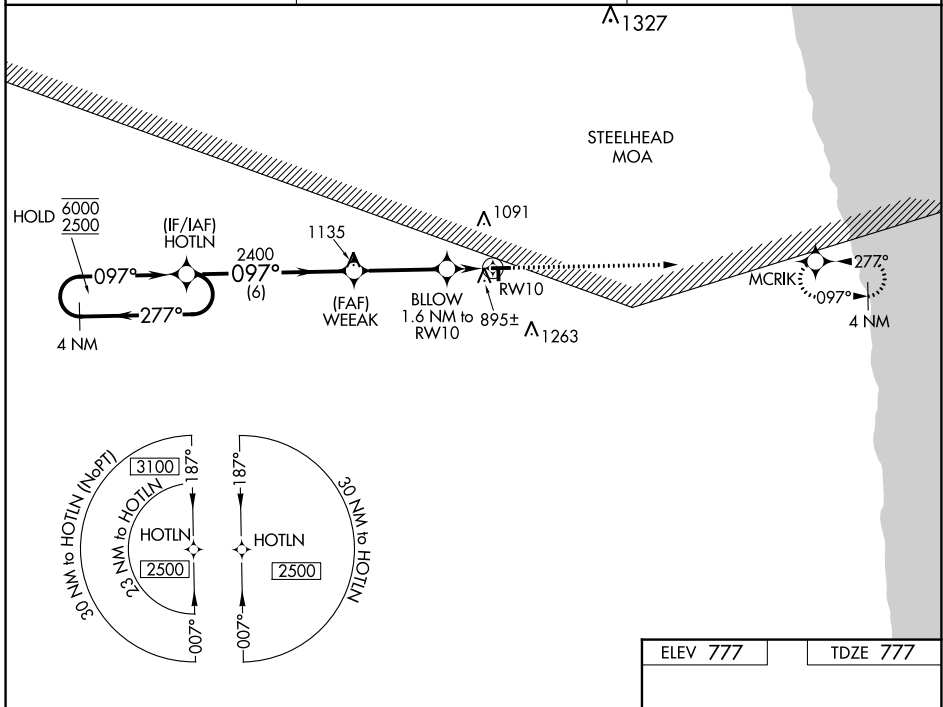
WAAS CH 49244 W10A	APP CRS 097°	Rwy Idg TDZE Apt Elev	3499 777 777
--	------------------------	-----------------------------	---

RNAV (GPS) RWY 10

SANDUSKY CITY (Y83)

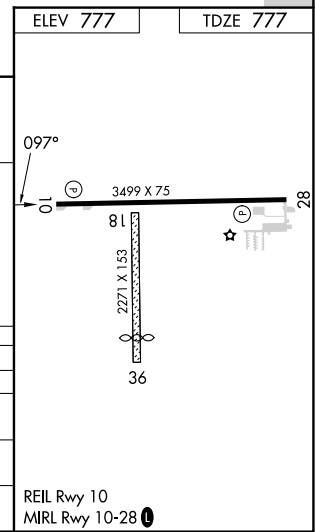
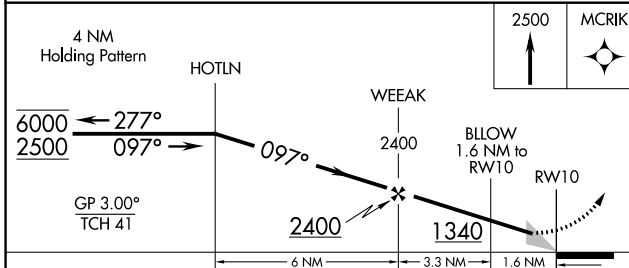
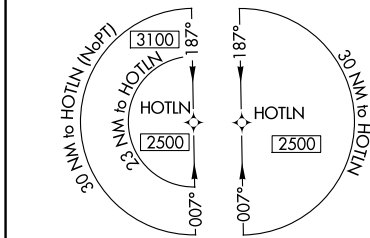
RNP APCH - GPS.	MISSED APPROACH: Climb to 2500 direct MCRIK and hold.
<p>NA Circling NA to Rwys 18 and 36. Circling NA north of Rwy 10-28. Procedure NA at night. Baro-VNAV NA. Use Bad Axe altimeter setting.</p>	

BAX AWOS-3 118.6	CLEVELAND CENTER 127.7 290.425	UNICOM 122.8 (CTAF) 0
----------------------------	--	---------------------------------



EC-1, 22 FEB 2024 to 21 MAR 2024

EC-1, 22 FEB 2024 to 21 MAR 2024



CATEGORY	A	B	C	D
LPV DA		1077-1	300 (300-1)	NA
LNAV/VNAV DA		1200-1½	423 (500-1½)	NA
LNAV MDA	1200-1	423 (500-1)	1200-1½ 423 (500-1½)	NA
CIRCLING	1260-1 483 (500-1)	1340-1 563 (600-1)	1680-2¾ 903 (1000-2¾)	NA

WAAS CH 93944 W28A	APP CRS 277°	Rwy Idg TDZE Apt Elev	3499 777 777
--	------------------------	-----------------------------	---

RNAV (GPS) RWY 28

SANDUSKY CITY (Y83)

RNP APCH - GPS.

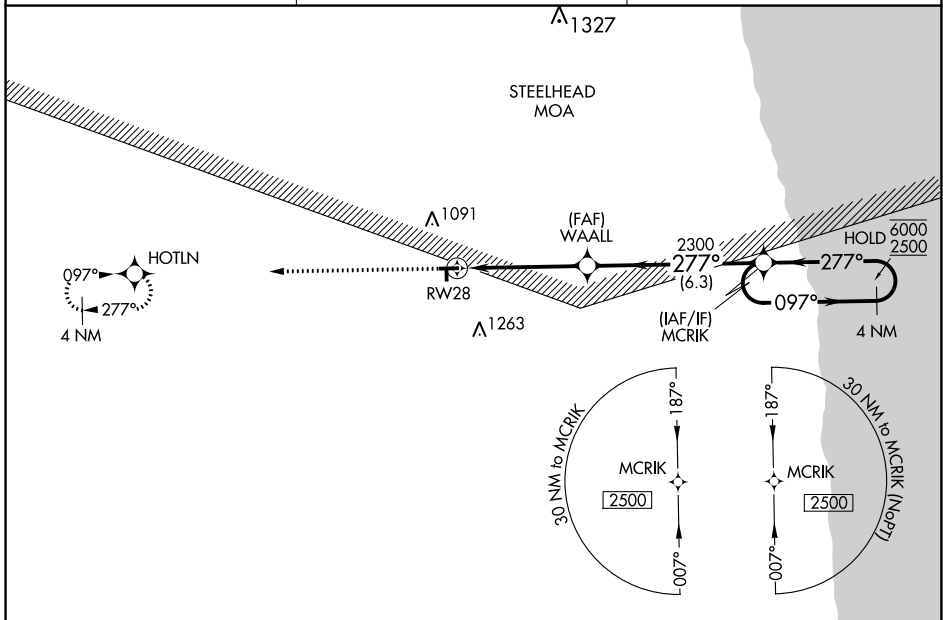
⚠ Circling NA to Rwy 18 and 36. Circling NA north of Rwy 10-28. Procedure NA at night.
⚠ NA Rwy 28 helicopter visibility reduction below 1 SM NA. Baro-VNAV NA. Use Bad Axe altimeter setting.

MISSED APPROACH:
Climb to 2500 direct
HOTLN and hold.

BAX AWOS-3
118.6

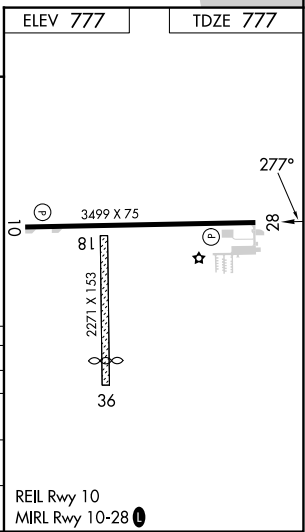
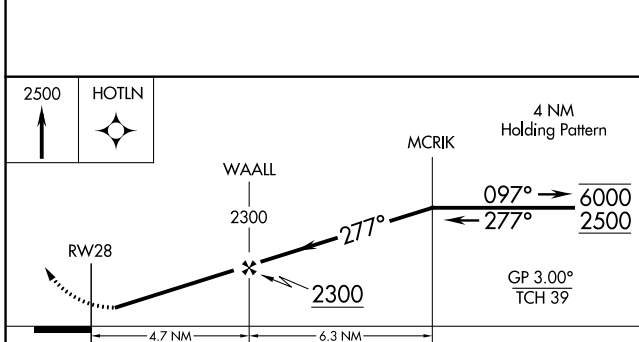
CLEVELAND CENTER
127.7 290.425

UNICOM
122.8 (CTAF) 0



EC-1, 22 FEB 2024 to 21 MAR 2024

EC-1, 22 FEB 2024 to 21 MAR 2024



CATEGORY	A	B	C	D
LPV DA	1077-1 300 (300-1)			NA
LNAV/VNAV DA	1077-1 300 (300-1)			NA
LNAV MDA	1260-1	483 (500-1)	1260-1 ³ / ₈ 483 (500-1 ³ / ₈)	NA
CIRCLING	1260-1 483 (500-1)	1340-1 563 (600-1)	1680-2 ³ / ₄ 903 (1000-2 ³ / ₄)	NA

REIL Rwy 10
MIRL Rwy 10-28 0