

APP CRS <b>334°</b>	Rwy Idg TDZE Apt Elev	<b>N/A</b> <b>N/A</b> <b>150</b>
------------------------	-----------------------------	--

# RNAV (GPS)-B

ORLANDO APOPKA (X04)

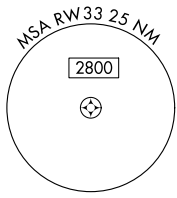
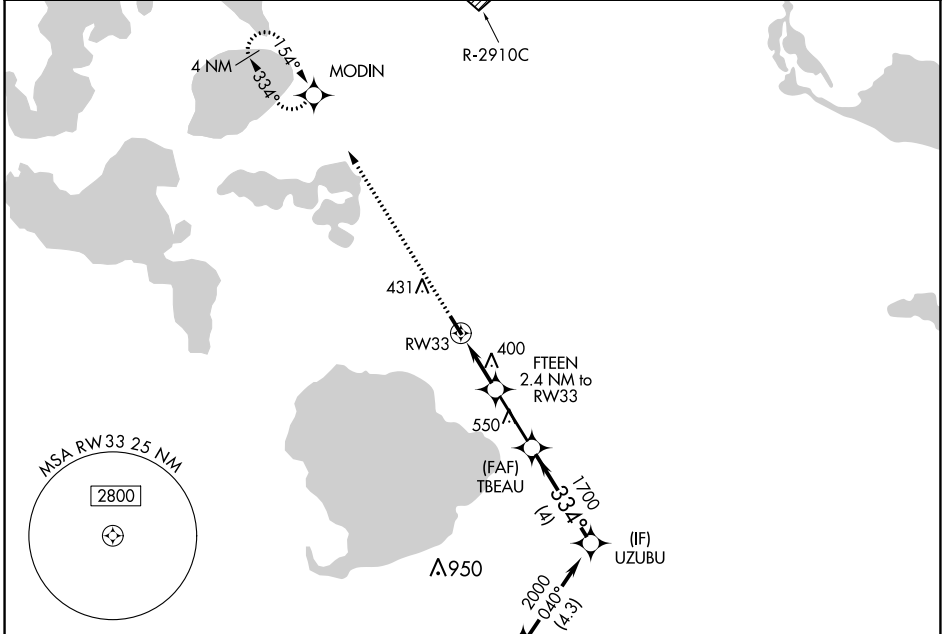
**NA** DME/DME RNP-0.3 NA. Procedure NA at night. Visibility reduction by helicopters NA. Use Leesburg Intl altimeter setting; when not received, use Executive altimeter setting.

MISSED APPROACH: Climb to 2000 direct MODIN and hold.

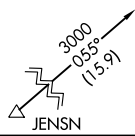
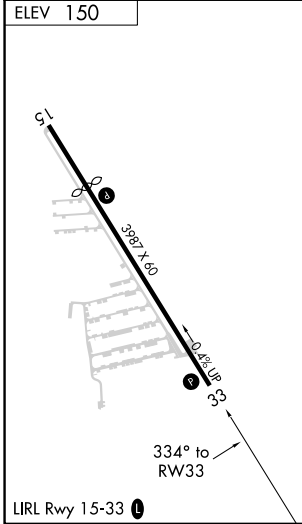
LEE ASOS  
**134.325**

ORLANDO APP CON  
**135.3 351.9**

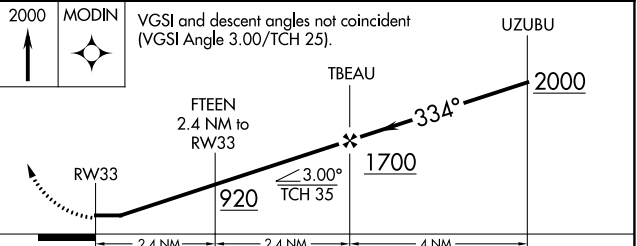
UNICOM  
**123.05** (CTAF) **1**



ELEV 150



Procedure NA for arrivals at JENSEN on V152 southwest bound.



CATEGORY	A	B	C	D
CIRCLING	700-1 550 (600-1)	840-1 690 (700-1)	NA	

SE-3, 22 FEB 2024 to 21 MAR 2024

SE-3, 22 FEB 2024 to 21 MAR 2024