

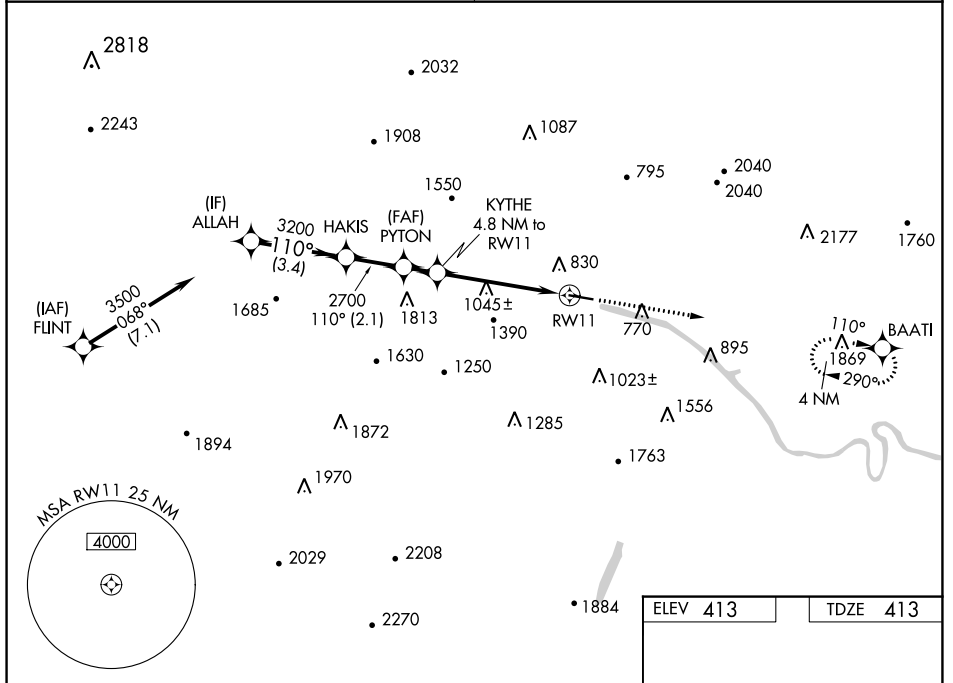
WAAS CH <b>63239</b> <b>W11A</b>	APP CRS <b>110°</b>	Rwy Idg TDZE <b>4979</b> Apt Elev <b>413</b>
--	------------------------	--

# RNAV (GPS) RWY 11

POTOMAC AIRPARK (W35)

RNP APCH.	<p>▼ Procedure NA at night. Rwy 11 helicopter visibility reduction below 1 SM NA. Obtain local altimeter setting on CTAF; when not received, use Martinsburg altimeter setting and increase all MDAs 80 feet and increase LNAV and LP Cat B, C and D visibilities ½ SM and increase Circling Cat B visibility ¼ SM.</p>	<p>▲ MISSED APPROACH: Climb to 3500 direct BAATI and hold.</p>
-----------	---	--

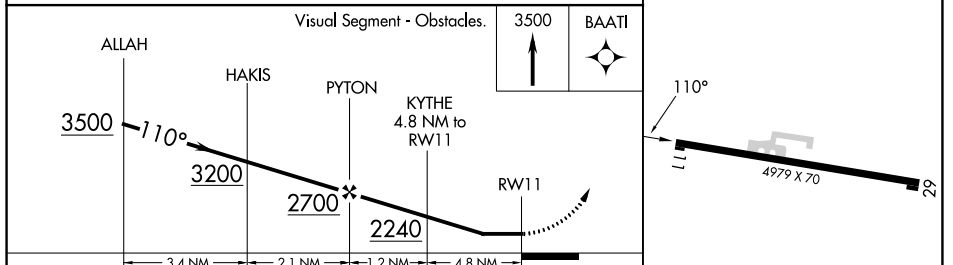
POTOMAC APP CON <b>126.825 239.025</b>	CTAF <b>122.9</b>
---	----------------------



NE-4, 22 FEB 2024 to 21 MAR 2024

NE-4, 22 FEB 2024 to 21 MAR 2024

ELEV 413	TDZE 413
----------	----------



CATEGORY	A	B	C	D
LP MDA	1300-1¼	887 (900-1¼)	1300-2½	887 (900-2½)
LNAV MDA	1340-1¼	927 (1000-1¼)	1340-2½	927 (1000-2½)
CIRCLING	1340-1¼	927 (1000-1¼)	1700-3 1287 (1300-3)	1780-3 1367 (1400-3)

MRL Rwy 11-29

WAAS CH <b>69639</b> <b>W29A</b>	APP CRS <b>290°</b>	Rwy Idg TDZE Apt Elev	<b>4979</b> <b>413</b> <b>413</b>
--	------------------------	-----------------------------	---

# RNAV (GPS) RWY 29

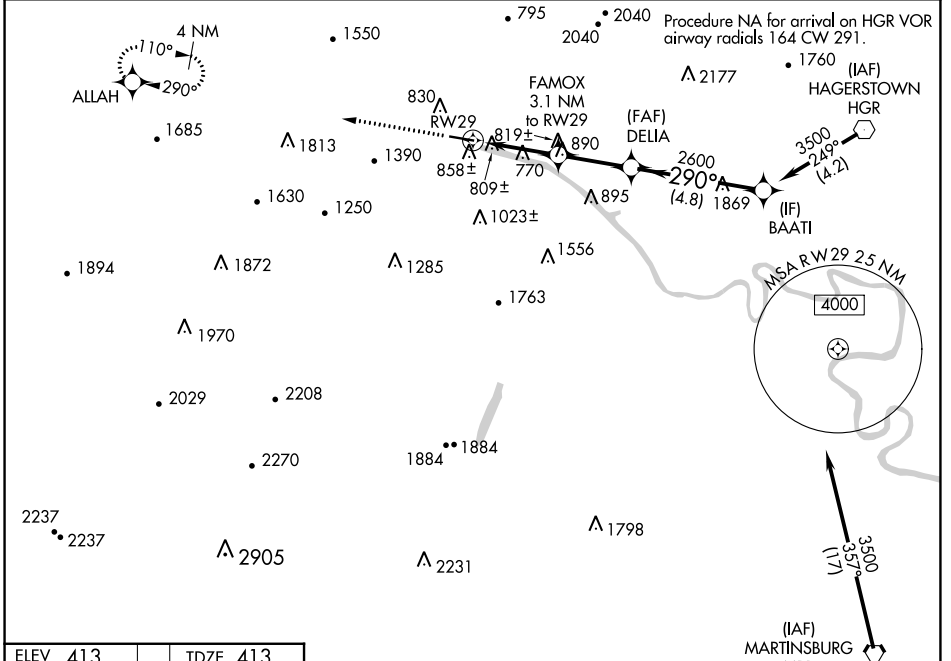
POTOMAC AIRPARK (W35)

RNP APCH.

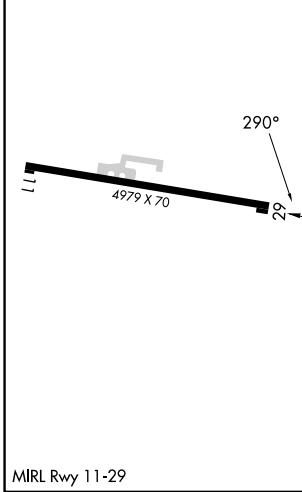
**NA** Procedure NA at night. Rwy 29 helicopter visibility reduction below 1 SM NA. Obtain local altimeter setting on CTAF; when not received, use Martinsburg altimeter setting and increase all MDA's 80 feet and increase LNAV Cat A visibility 1/2 SM.

MISSED APPROACH: Climb to 3500 direct ALLAH and hold.

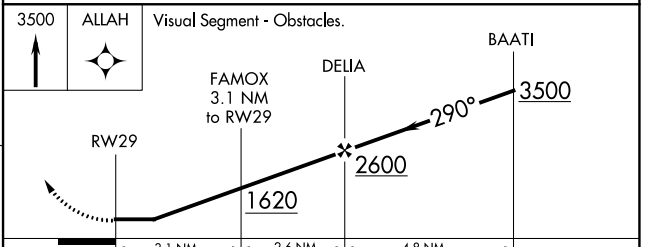
POTOMAC APP CON <b>126.825 239.025</b>	CTAF <b>122.9</b>
---	----------------------



ELEV <b>413</b>	TDZE <b>413</b>
-----------------	-----------------



Procedure NA for arrival on MRB VORTAC airway radials 267 CW 065.



CATEGORY	A	B	C	D
LP MDA	1180-1 767 (800-1)	1180-1 1/4 767 (800-1 1/4)	1180-2 1/2	767 (800-2 1/2)
LNAV MDA	1220-1 807 (900-1)	1220-1 1/4 807 (900-1 1/4)	1220-2 1/2	807 (900-2 1/2)
<b>C</b> CIRCLING	1240-1 1/4 827 (900-1 1/4)	1280-1 1/4 867 (900-1 1/4)	1700-3 1287 (1300-3)	1780-3 1367 (1400-3)

NE-4, 22 FEB 2024 to 21 MAR 2024

NE-4, 22 FEB 2024 to 21 MAR 2024