

APP CRS	Rwy Idg	2004
241°	TDZE	1436
	Apt Elev	1436

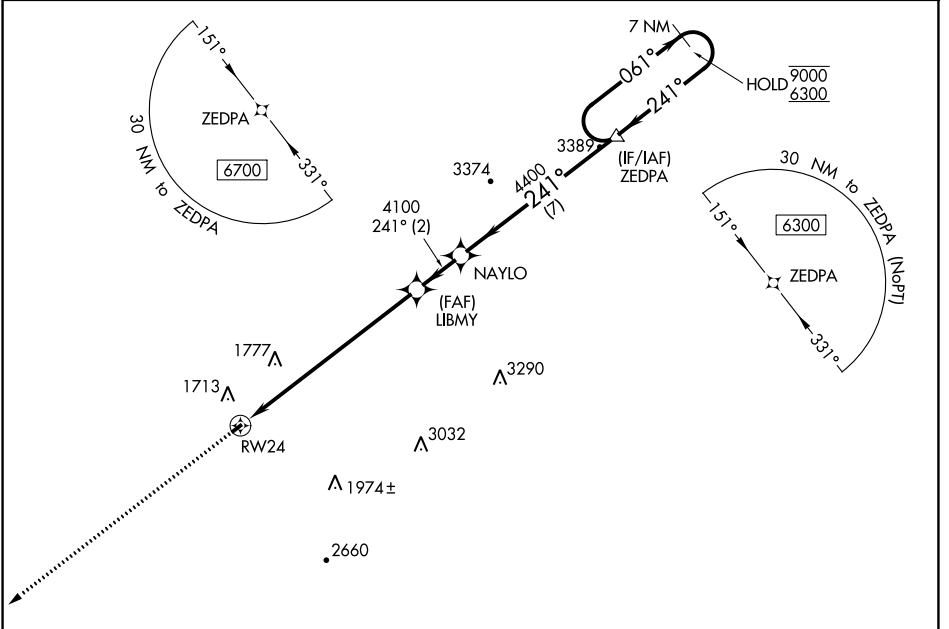
RNAV (GPS) RWY 24

EAGLE'S NEST (W13)

RNP APCH.
 Procedure NA at night. Rwy 24 helicopter visibility reduction below 1 SM NA.

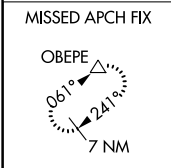
MISSED APPROACH: Climb to 6700 direct OBEPE and hold, continue climb-in-hold to 6700.

AWOS-3PT 118.625	POTOMAC APP CON 132.85 323.125	UNICOM 123.05 (CTAF)
----------------------------	--	--------------------------------

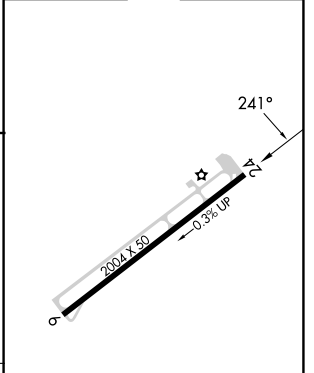
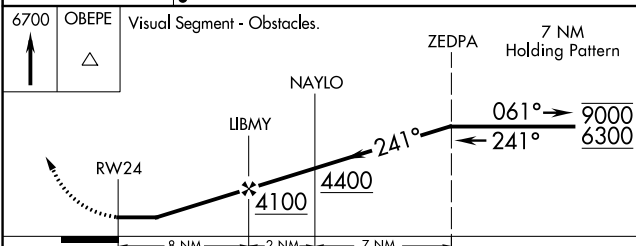


NE-3, 22 FEB 2024 to 21 MAR 2024

NE-3, 22 FEB 2024 to 21 MAR 2024



ELEV 1436	TDZE 1436
-----------	-----------



CATEGORY	A	B	C	D
LNNAV MDA	2640-3	1204 (1300-3)		NA
CIRCLING	2640-3	1204 (1300-3)		NA



APP CRS **061°**
 Rwy Idg **2004**
 TDZE **1436**
 Apt Elev **1436**

RNAV (GPS) RWY 6

EAGLE'S NEST (W13)

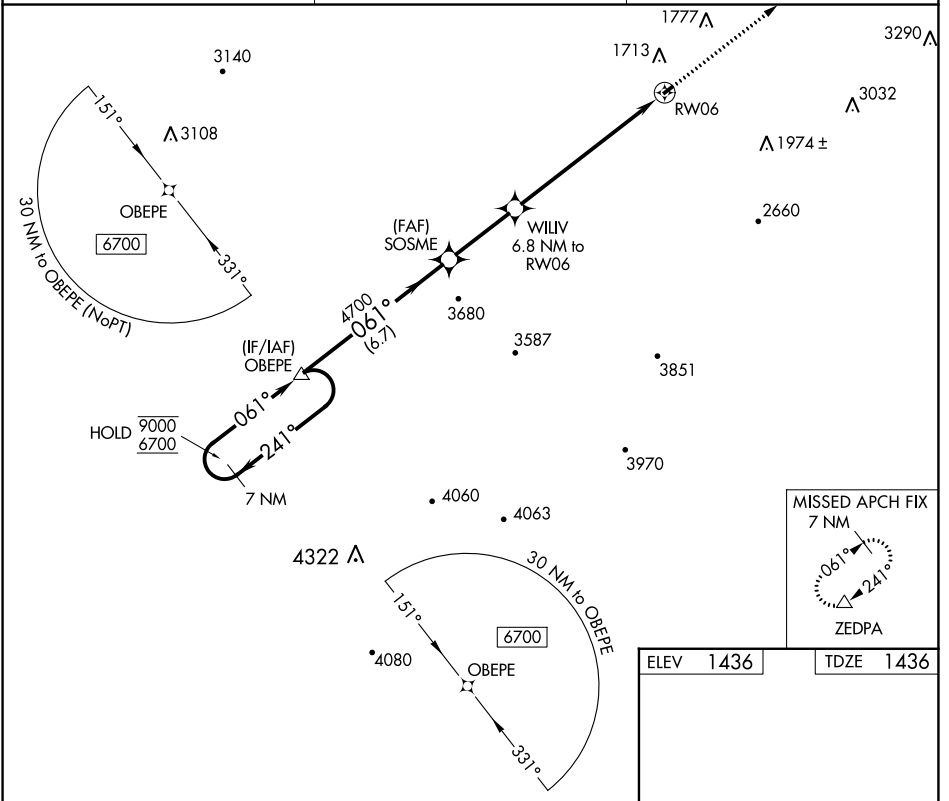
RNP APCH.
 NA Rwy 6 helicopter visibility reduction below 1 SM NA. Procedure NA at night.

MISSED APPROACH: Climb to 6300 direct ZEDPA and hold, continue climb-in-hold to 6300.

AWOS-3PT
118.625

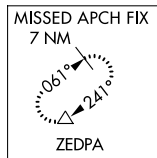
POTOMAC APP CON
132.85 323.125

UNICOM
123.05 (CTAF) 0

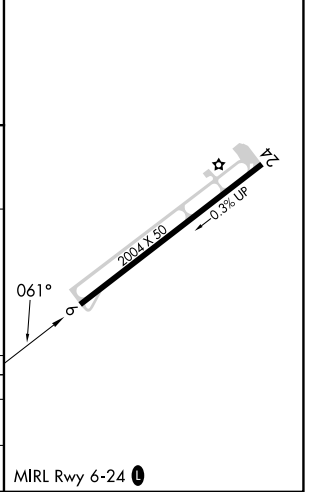
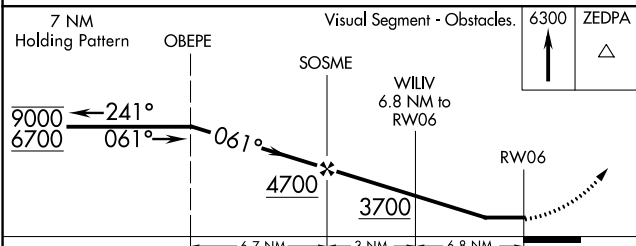


NE-3, 22 FEB 2024 to 21 MAR 2024

NE-3, 22 FEB 2024 to 21 MAR 2024



ELEV **1436** TDZE **1436**



CATEGORY	A	B	C	D
LNVA MDA	2440-3	1004 (1100-3)		NA
CIRCLING	2440-3	1004 (1100-3)		NA