

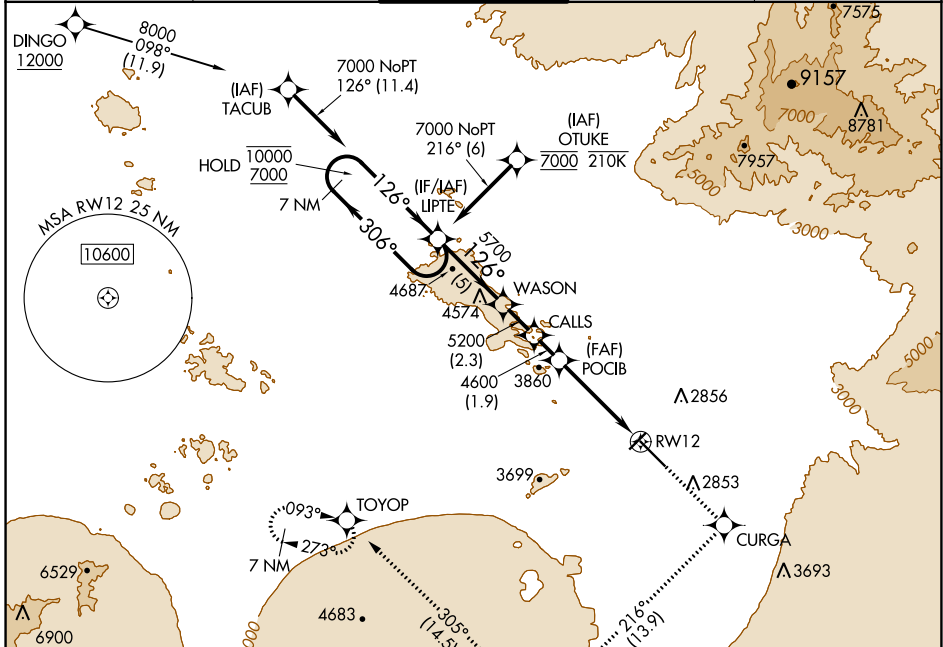
WAAS CH 93545 W12A	APP CRS 126°	Rwy Idg 1099E TDZE 2599 Apt Elev 2643
--	------------------------	--

RNAV (GPS) Z RWY 12

TUCSON INTL (TUS)

RNP APCH - GPS.	MALSR	MISSED APPROACH: Climb to 9000 direct CURGA and climbing right turn on 216° track to REBDE and climbing right turn on 305° track to TOYOP and hold, continue climb-in-hold to 9000.
<p>⚠ For uncompensated Baro-VNAV systems, LNAV/VNAV NA below -2°C or above 54°C. For inop ALS, increase LNAV/VNAV all Cats visibility to RVR 4500, and increase LNAV Cats C/D visibility to 2 SM.</p>		

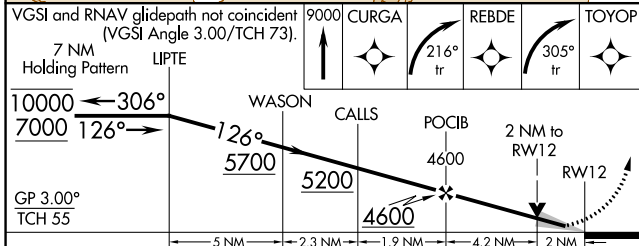
ATIS 123.8 279.65	TUCSON APP CON 119.4 318.1	TUCSON TOWER 118.3 257.8	GND CON 120.025 348.6	CLNC DEL 126.65 326.2
-----------------------------	--------------------------------------	------------------------------------	---------------------------------	---------------------------------



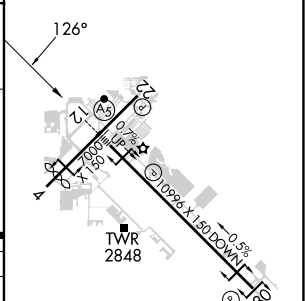
SW-4, 22 FEB 2024 to 21 MAR 2024

SW-4, 22 FEB 2024 to 21 MAR 2024

<p>VGSI and RNAV glidepath not coincident (VGSI Angle 3.00/TCH 73). 7 NM Holding Pattern LIPTES</p>	<p>9000 CURGA</p>	<p>216° tr REBDE</p>	<p>305° tr TOYOP</p>
---	-------------------	----------------------	----------------------



ELEV 2643	TDZE 2599
-----------	-----------



CATEGORY	A	B	C	D	
LPV DA		2799/24	200 (200-½)		
LNAV/VNAV DA		2905/24	306 (300-½)		
LNAV MDA	3300/24	701 (700-½)	3300-1½	701 (700-1½)	
CIRCLING	3300-1	657 (700-1)	3300-2	3640-3	

HIRL Rwy 12-30
MIRL Rwy 4-22
REIL Rwy 22 and 30