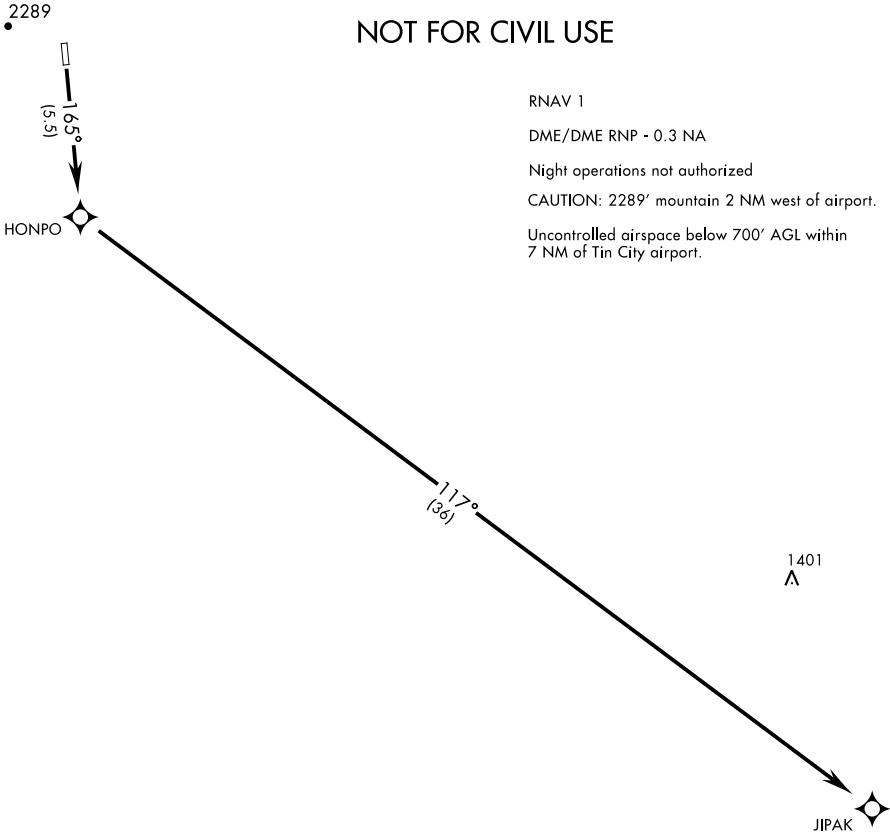


UNICOM (CTAF)  
126.2  
TIN CITY RCO (NOME RADIO)  
122.6  
ANCHORAGE CENTER  
133.3 290.4

AL-2334 [USAF]

MILITARY CERTIFIED  
AIRCREWS OR AUTHORIZED  
CONTRACT AIRCRAFT ONLY  
  
NOT FOR CIVIL USE

RNAV 1  
DME/DME RNP - 0.3 NA  
Night operations not authorized  
CAUTION: 2289' mountain 2 NM west of airport.  
Uncontrolled airspace below 700' AGL within  
7 NM of Tin City airport.



GPS REQUIRED

DEPARTURE ROUTE DESCRIPTION

TAKE-OFF RWY 16: Climb to 7000 direct HONPO, then climbing left turn,  
track 117° to JIPAK.  
  
TAKE-OFF RWY 34: NA