

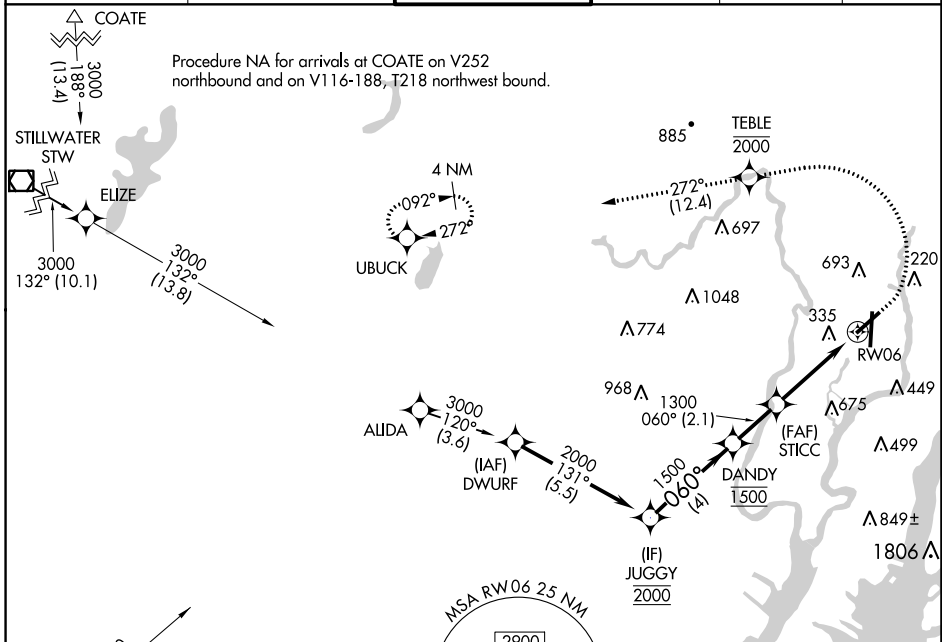
WAAS CH <b>65707</b> <b>W06A</b>	APP CRS <b>060°</b>	Rwy Idg TDZE Apt Elev	<b>6013</b> <b>6</b> <b>8</b>
--	------------------------	-----------------------------	-------------------------------------

# RNAV (GPS) Y RWY 6

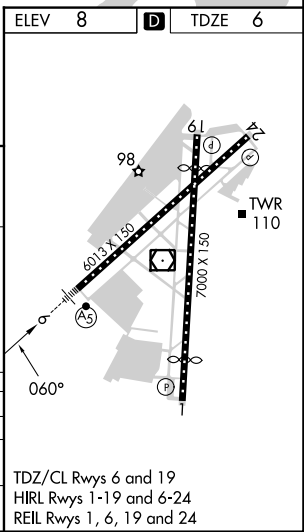
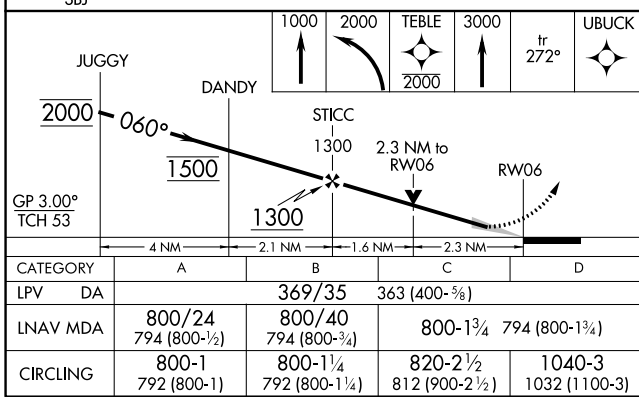
TETERBORO (TEB)

RNP APCH - GPS. RADAR required.	MALSR 	MISSED APPROACH: Climb to 1000, then climbing left turn to 2000 direct TEBLE, cross TEBLE at or below 2000, then climb to 3000 on track 272° to UBUCK and hold.
<p>Procedure NA for Cats B, C, and D northwest of Rwy 6 and 19. For inop ALS, increase LPV all Cats visibility to RVR 5500 and increase LNAV Cats C/D visibility to 2½ SM.</p>		

D-ATIS <b>114.2 132.85</b>	NEW YORK APP CON <b>127.6 379.9</b>	TETERBORO TOWER <b>119.5</b>	GND CON <b>121.9</b>	CLNC DEL <b>128.05</b>	CPDLC
-------------------------------	--	---------------------------------	-------------------------	---------------------------	-------



ELEV 8	D	TDZE 6
--------	---	--------



NE-2, 22 FEB 2024 to 21 MAR 2024

NE-2, 22 FEB 2024 to 21 MAR 2024