

WAAS CH 82342 W12B	APP CRS 121°	Rwy Idg TDZE 4527 Apt Elev 4530
--	------------------------	---

RNAV (GPS) Z RWY 12

SPANISH FORK MUNI/WOODHOUSE FLD (SPK)

RNP APCH - GPS.

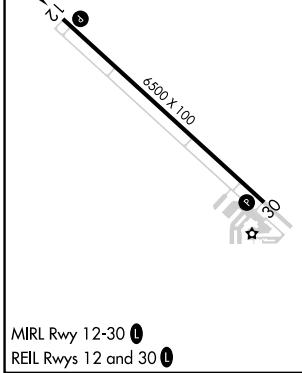
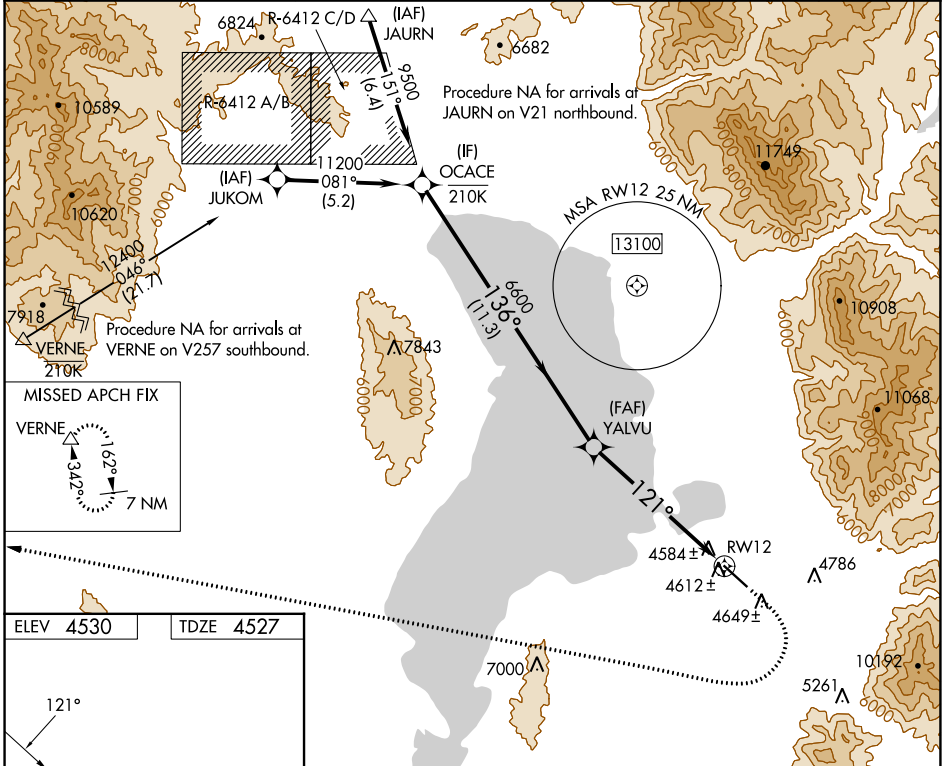
NA Rwy 12 helicopter visibility reduction below 3/4 SM NA. When local altimeter setting not received, use Provo altimeter setting and increase all MDAs 20 feet.

-21°C

MISSED APPROACH: (Do not exceed 185K until VERNE) Climb to 5000 then climbing right turn to 11500 direct VERNE and hold.

*Missed approach requires minimum climb of 380 feet per NM to 7600; if unable to meet climb gradient, see RNAV (GPS) Y RWY 12.

AWOS-3PT 119.275	SALT LAKE CITY APP CON 118.85 233.7	CTAF 122.9
----------------------------	---	----------------------



OCACE		Visual Segment - Obstacles.		
9500		5000	11500	VERNE
YALVU		↑	↷	△
136°				
6600				
121°				
RWY 12				
11.3 NM		6.4 NM		
CATEGORY	A	B	C	D
LP MDA*	4880-1 353 (400-1)			
LNAV MDA*	4900-1 373 (400-1)			

SW-4, 22 FEB 2024 to 21 MAR 2024

SW-4, 22 FEB 2024 to 21 MAR 2024