

VORTAC PIE <b>116.4</b> Chan <b>111</b>	APP CRS <b>164°</b>	Rwy Idg TDZE Apt Elev	<b>2674</b> <b>6</b> <b>7</b>
---	------------------------	-----------------------------	-------------------------------------

# VOR RWY 18

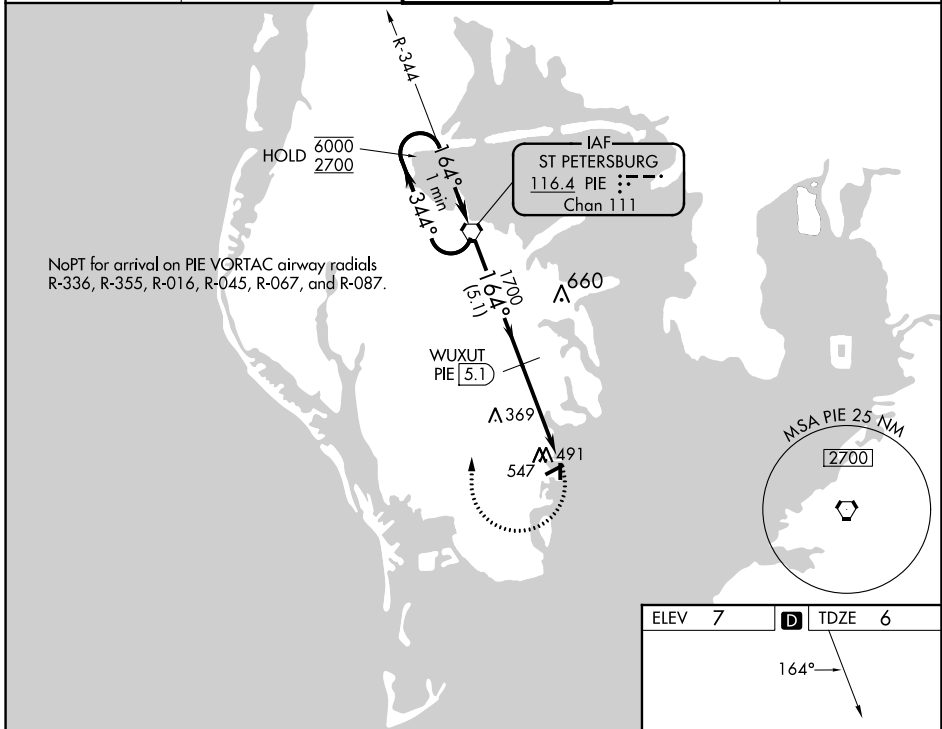
ALBERT WHITTED (SPG)

DME required.

**▽** Circling NA northwest of Rwy 7 and 18. Procedure NA at night.  
**▲** Rwy 18 helicopter visibility reduction below 1 SM NA.

MISSED APPROACH: Climbing right turn to 2700 direct PIE VORTAC and hold, continue climb-in-hold to 2700.

ASOS <b>118.875</b>	TAMPA APP CON <b>119.65 316.05 (EAST)</b> <b>125.3 316.05 (WEST)</b>	WHITTED TOWER ★ <b>127.4 (CTAF) 0 257.6</b>	GND CON <b>121.8</b>	UNICOM <b>122.95</b>
------------------------	--	--	-------------------------	-------------------------

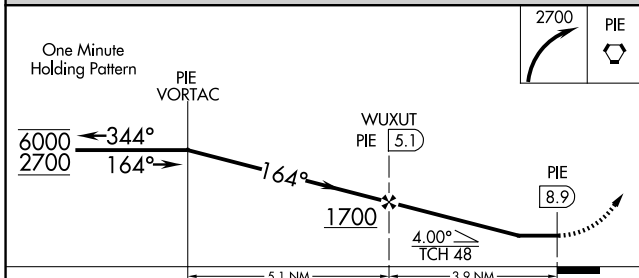
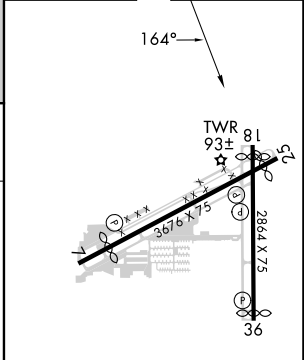


NoPT for arrival on PIE VORTAC airway radials R-336, R-355, R-016, R-045, R-067, and R-087.

SE-3, 22 FEB 2024 to 21 MAR 2024

SE-3, 22 FEB 2024 to 21 MAR 2024

ELEV 7	<b>D</b> TDZE 6
--------	-----------------



CATEGORY	A	B	C	D
S-18	800-1 794 (800-1)	800-1¼ 794 (800-1¼)		NA
<b>C</b> CIRCLING	800-1 793 (800-1)	800-1¼ 793 (800-1¼)		NA

MIRL Rwy 7-25 and 18-36  
 REIL Rwy 7, 18, 25 and 36