

| | | |
|-------------|----------|-------------|
| APP CRS | Rwy ldg | 9908 |
| 258° | TDZE | 7 |
| | Apt Elev | 10 |

RNAV (GPS) RWY 26

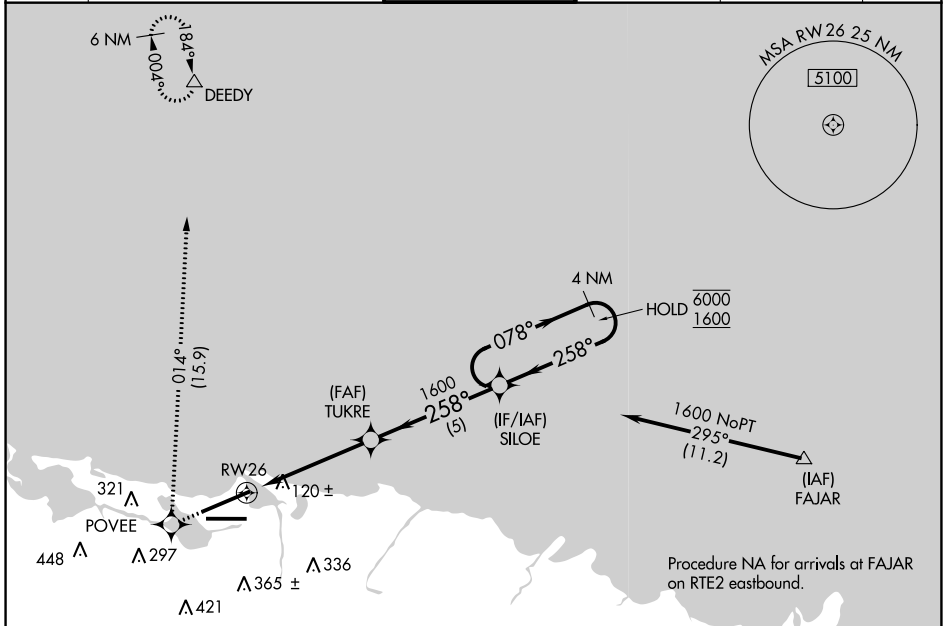
LUIS MUNOZ MARIN INTL (SJU)(TJSJ)

RNP APCH.

▼ For uncompensated Baro-VNAV systems, LNAV/VNAV
 ▲ NA below 22°C or above 54°C.

MISSED APPROACH: Climb to 3000 direct POVEE and right turn on track 014° direct DEEDY and hold.

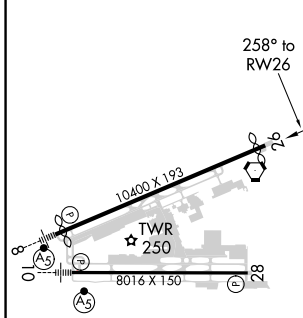
| | | | | | |
|--------------|---|---------------------|--------------------|--------------------|-------|
| D-ATIS | SAN JUAN APP CON | SAN JUAN TOWER | GND CON | CLNC DEL | CPDLC |
| 125.8 | 119.4 269.2 120.9 290.2 (WEST & SW) (NORTH & EAST) | 132.05 257.8 | 121.9 348.6 | 126.4 284.6 | |



SE-3, 22 FEB 2024 to 21 MAR 2024

SE-3, 22 FEB 2024 to 21 MAR 2024

| | | |
|---------|----------|--------|
| ELEV 10 | D | TDZE 7 |
|---------|----------|--------|



| | | | | |
|-------------------|---------------------|-------------|------------------------|------------------------|
| 3000 | POVEE | 014° tr | DEEDY | 4 NM Holding Pattern |
| *LNAV only | | TUKRE 1600 | SILOE | |
| *1.1 NM to RWY 26 | | 1600 | 078° → 6000 | GP 3.00° |
| 1.1 NM | | 3.7 NM | ← 258° 1600 | TCH 55 |
| CATEGORY | A | B | C | D |
| LNAV/VNAV DA | 384-1¼ 377 (400-1¼) | | | |
| LNAV MDA | 400-1 | 393 (400-1) | 400-1½ 393 (400-1½) | 400-1¼ 393 (400-1¼) |
| C CIRCLING | 600-1 | 590 (600-1) | 740-2 730 (800-2) | 920-3 910 (1000-3) |

REIL Rwy 26
 HIRL Rwy 8-26 and 10-28

SAN JUAN, PUERTO RICO
 Orig-C 10OCT19

18°26'N-66°00'W

RNAV (GPS) RWY 26