

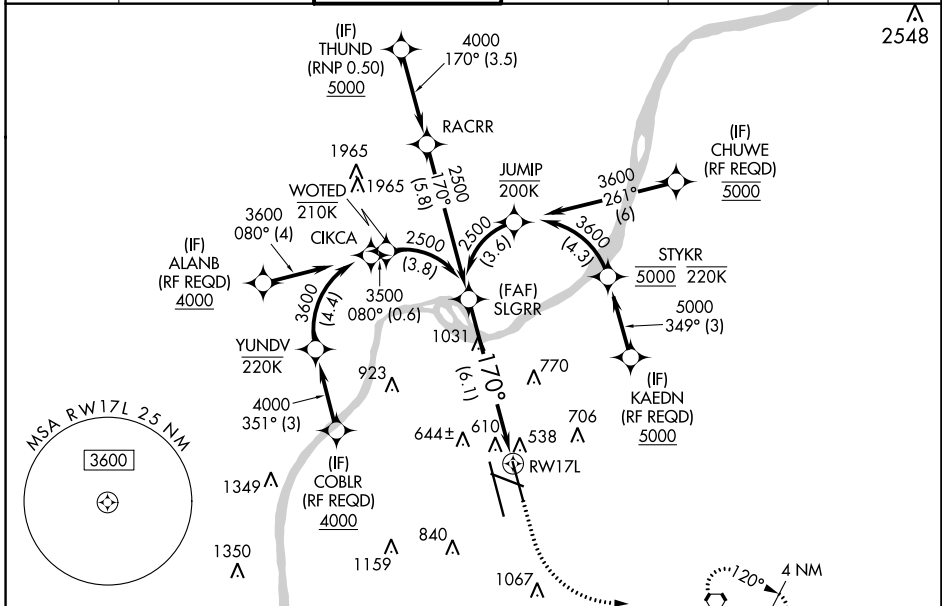
APP CRS	Rwy Idg	<b>7800</b>
<b>170°</b>	TDZE	<b>499</b>
	Apt Elev	<b>501</b>

# RNAV (RNP) Z RWY 17L

LOUISVILLE MUHAMMAD ALI INTL (SDF)

RNP AR APCH.	MALSR	MISSED APPROACH: Climb to 1000 then climbing left turn to 3000 direct IIL VORTAC and hold, continue climb-in-hold to 3000.
▼ For uncompensated Baro-VNAV systems, procedure NA below -14°C or above 54°C. For inop ALS, increase RNP 0.30 all Cats visibility to 1 3/8 SM. Simultaneous approach authorized, except for arrivals at CHUWE, KAEDN, ALANB, and COBLR.		

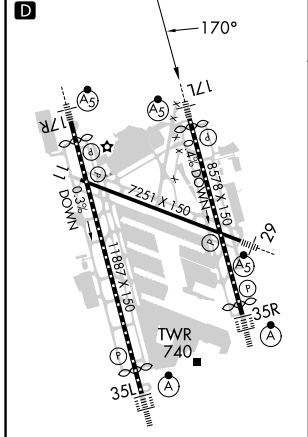
D-ATIS	LOUISVILLE APP CON	LOUISVILLE TOWER	GND CON	CLNC DEL	CPDLC
<b>118.725</b>	<b>132.075 327.0</b>	<b>124.2 257.8</b>	<b>121.7 348.6</b>	<b>126.1 275.8</b>	



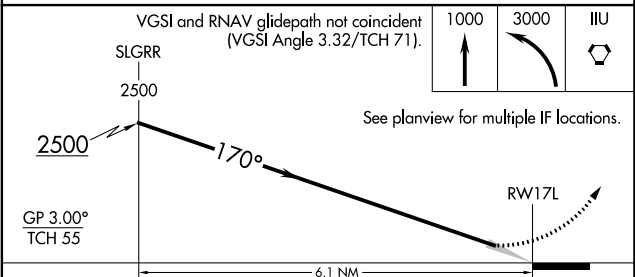
SE-1, 22 FEB 2024 to 21 MAR 2024

SE-1, 22 FEB 2024 to 21 MAR 2024

ELEV 501	TDZE 499
----------	----------



HIRL all Rwys  
TDZ/CL Rwys 17L, 17R, 35L and 35R



CATEGORY	A	B	C	D
RNP 0.30 DA	936/50		437 (500-1)	

**AUTHORIZATION REQUIRED**