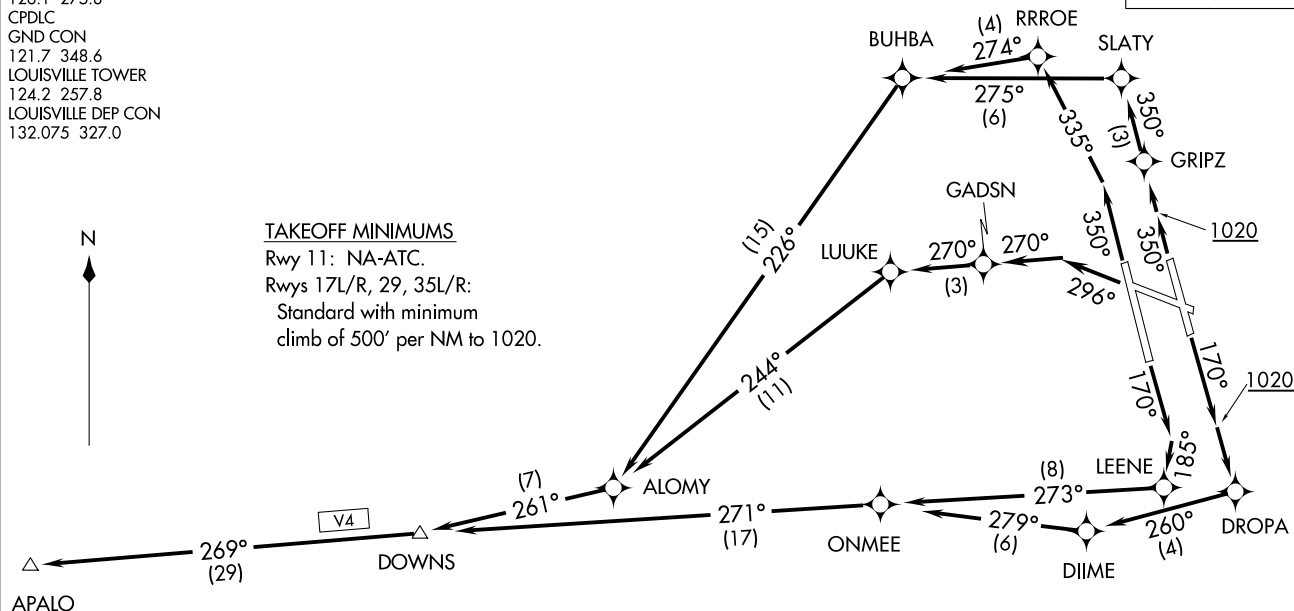


APALO SIX DEPARTURE (RNAV)
(APAL06.APALO) 05DECT9

LOUISVILLE MUHAMMAD ALI INTL (SDF)
LOUISVILLE, KENTUCKY

D-ATIS 118.725
CLNC DEL
126.1 275.8
CPDLC
GND CON
121.7 348.6
LOUISVILLE TOWER
124.2 257.8
LOUISVILLE DEP CON
132.075 327.0

TOP ALTITUDE:
5000



NOTE: RNAV 1.
NOTE: DME/DME/IRU or GPS required.
NOTE: RADAR required for non-GPS equipped aircraft.
NOTE: For Turbojet aircraft only.
NOTE: If unable to accept climb rate, advise ATC on initial contact.
NOTE: Transponder code will be issued via PDC or Louisville clearance delivery.

(NARRATIVE ON FOLLOWING PAGE)

NOTE: Chart not to scale.

(APAL06.APALO) 19339
APALO SIX DEPARTURE (RNAV)

AL-239 (FAA)

LOUISVILLE MUHAMMAD ALI INTL (SDF)
LOUISVILLE, KENTUCKY



DEPARTURE ROUTE DESCRIPTION

TAKEOFF RUNWAY 17L: Climb heading 170° to 1020, then direct DROPA, then on depicted route to APALO, thence....
TAKEOFF RUNWAY 17R: Climb heading 170° to intercept course 185° to LEENE, then on depicted route to APALO, thence....
TAKEOFF RUNWAY 29: Climb heading 296° to intercept course 270° to GADSN, then on depicted route to APALO, thence....
TAKEOFF RUNWAY 35L: Climb heading 350° to intercept course 335° to RRROE, then on depicted route to APALO, thence....
TAKEOFF RUNWAY 35R: Climb heading 350° to 1020, then direct GRIPZ, then on depicted route to APALO, thence....

.....maintain 5000. Expect clearance to filed altitude 10 minutes after departure.

SE-1, 22 FEB 2024 to 21 MAR 2024

SE-1, 22 FEB 2024 to 21 MAR 2024