

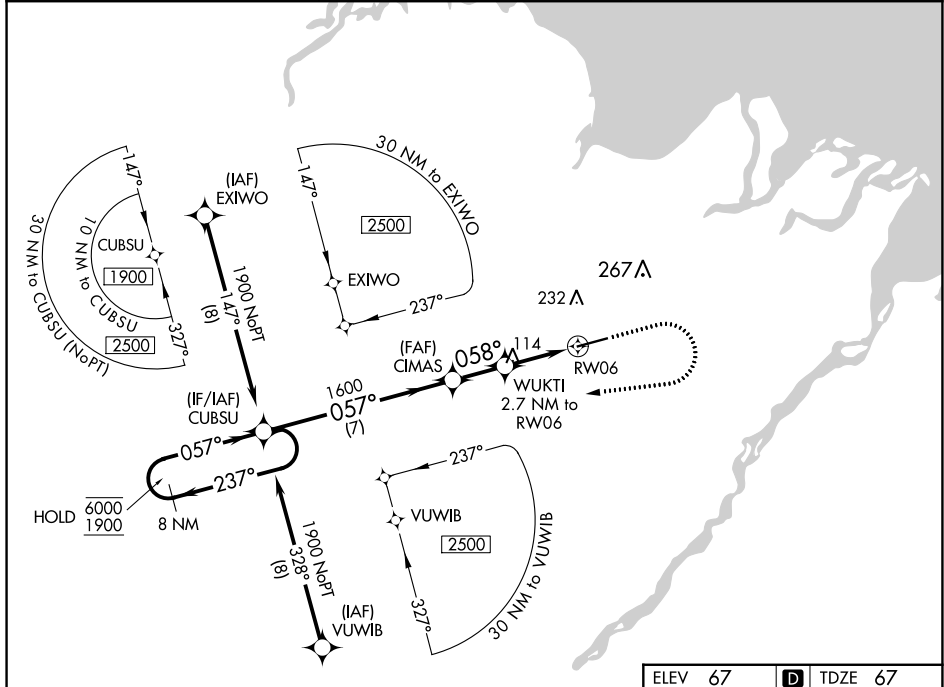
WAAS CH 49103 W06A	APP CRS 058°	Rwy Idg 6500 TDZE 67 Apt Elev 67
--	------------------------	---

RNAV (GPS) Z RWY 6

DEADHORSE (SCC) (PASC)

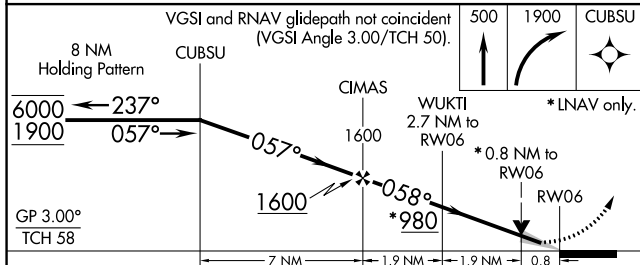
RNP APCH. ▼ ▲ For uncompensated Baro-VNAV systems, LNAV/VNAV NA below -17°C or above 54°C. For inop ALS, increase LPV Cat E visibility to RVR 4000, and increase LNAV/VNAV all Cats and LNAV Cats C/D/E visibility to RVR 4500. # RVR 1800 authorized with use of FD or AP or HUD to DA.	MALSRL AS	MISSED APPROACH: Climb to 500 then climbing right turn to 1900 direct CUBSU and hold.
--	--------------	---

AFIS 118.4	ANCHORAGE CENTER 134.4 370.9	DEADHORSE RADIO 123.6 (CTAF) 0
----------------------	--	--



AK, 25 JAN 2024 to 21 MAR 2024

AK, 25 JAN 2024 to 21 MAR 2024



ELEV 67	D	TDZE 67
---------	---	---------

CATEGORY	A	B	C	D	E
LPV DA#		267/24	200 (200-1/2)		
LNAV/VNAV DA		369/24	302 (400-1/2)		
LNAV MDA		380/24	313 (400-1/2)		
CIRCLING	540-1	473 (500-1)	580-1 1/2 513 (600-1 1/2)	620-2	553 (600-2)

