

WAAS CH 77834 W02A	APP CRS 023°	Rwy Idg TDZE Apt Elev	5000 805 812
--	------------------------	-----------------------------	---

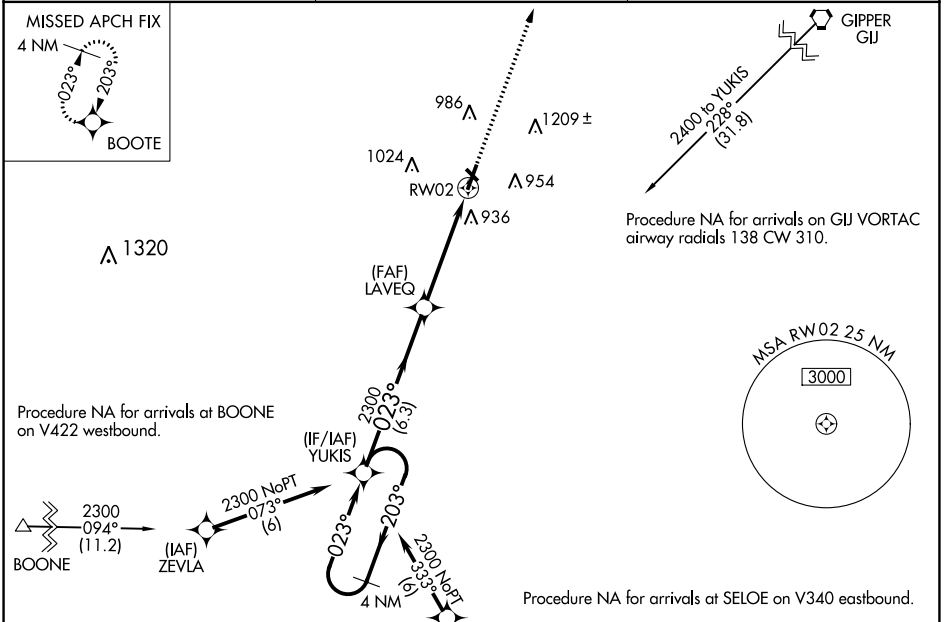
RNAV (GPS) RWY 2

LA PORTE MUNI (PPO)

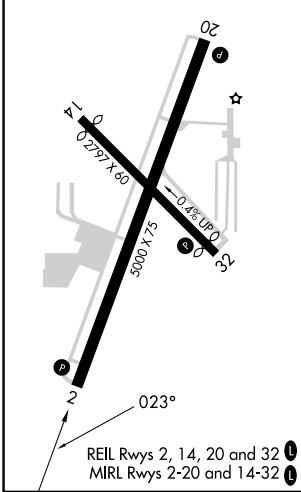
⚠ Baro-VNAV NA when using South Bend altimeter setting. For uncompensated Baro-VNAV systems, LNAV/VNAV NA below -16°C (4°F) or above 54°C (130°F). DME/DME RNP-0.3 NA. When local altimeter setting not received, use South Bend altimeter setting and increase all DA 49 feet, and all MDA 60 feet; increase LNAV/VNAV all Cats and LNAV Cat C/D visibility ¼ mile. Helicopter visibility reduction below ¾ SM NA. Circling Rwy 14, 32 NA at night.

⚠ MISSED APPROACH: Climb to 2500 direct BOOTE and hold.

AWOS-3 119.825	SOUTH BEND APP CON * 132.05 257.8	UNICOM 123.0 (CTAF) 0
--------------------------	---	--



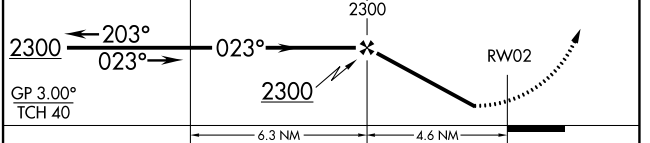
ELEV 812	TDZE 805
----------	----------



4 NM Holding Pattern

VGSI and RNAV glidepath not coincident (VGSI Angle 3.00/TCH 24).

2500 BOOTE



CATEGORY	A	B	C	D
LPV DA		1067-1	262 (300-1)	
LNAV/VNAV DA		1220-1½	415 (500-1½)	
LNAV MDA	1220-1	415 (500-1)	1220-1½	415 (500-1½)
<input checked="" type="checkbox"/> CIRCLING	1320-1	508 (600-1)	1560-2¼ 748 (800-2¼)	1560-2½ 748 (800-2½)

EC-2, 22 FEB 2024 to 21 MAR 2024

EC-2, 22 FEB 2024 to 21 MAR 2024