

WAAS CH 45907 W 18A	APP CRS 183°	Rwy Idg TDZE Apt Elev	5001 663 663
---	------------------------	-----------------------------	---

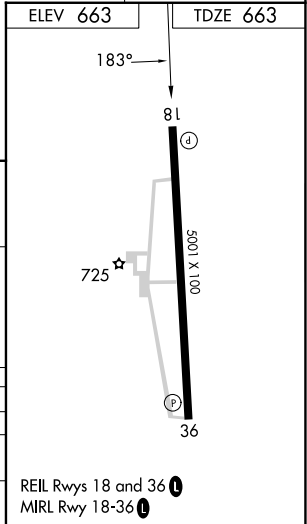
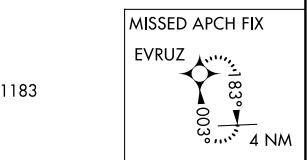
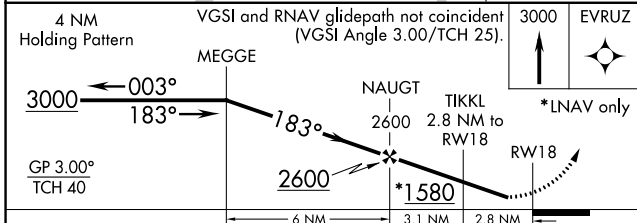
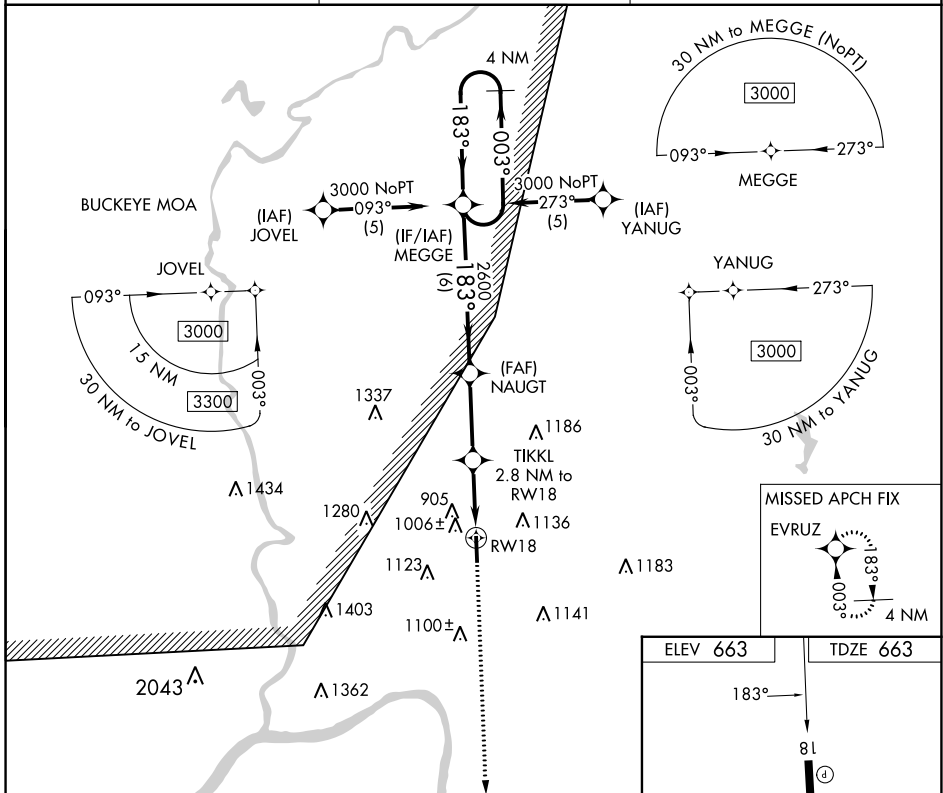
RNAV (GPS) RWY 18

GREATER PORTSMOUTH RGNL (PMH)

▽ DME/DME RNP-0.3 NA. Visibility reduction by helicopters NA.
△ NA When local altimeter setting not received, use Huntington altimeter setting and increase LPV DA to 1106 feet and visibility all Cats ¼ SM; increase all MDA 100 feet and LNAV Cat C/D visibility ½ SM and Circling Cat B/C/D ¼ SM.

MISSED APPROACH:
 EVRUZ to 3000 direct
 CIRMVZ and hold.

AWOS-3 125.175	HUNTINGTON APP CON 128.4 270.1	UNICOM 122.8 (CTAF) 0
--------------------------	--	---------------------------------



CATEGORY	A	B	C	D
LPV DA	1010-1¼ 347 (400-1¼)			
LNAV MDA	1260-1 597 (600-1)	1260-1½ 597 (600-1½)	1260-1¾ 597 (600-1¾)	
CIRCLING	1340-1 677 (700-1)	1440-1 777 (800-1)	1440-2¼ 777 (800-2¼)	1540-2¾ 877 (900-2¾)

REIL Rwy 18 and 36 **0**
 MIRL Rwy 18-36 **0**

EC-2, 22 FEB 2024 to 21 MAR 2024

EC-2, 22 FEB 2024 to 21 MAR 2024