

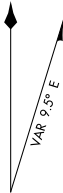
20310

AIRPORT DIAGRAM

AL-756 (FAA)

HILO INTL (ITO) (PHTO)
HILO, HAWAII

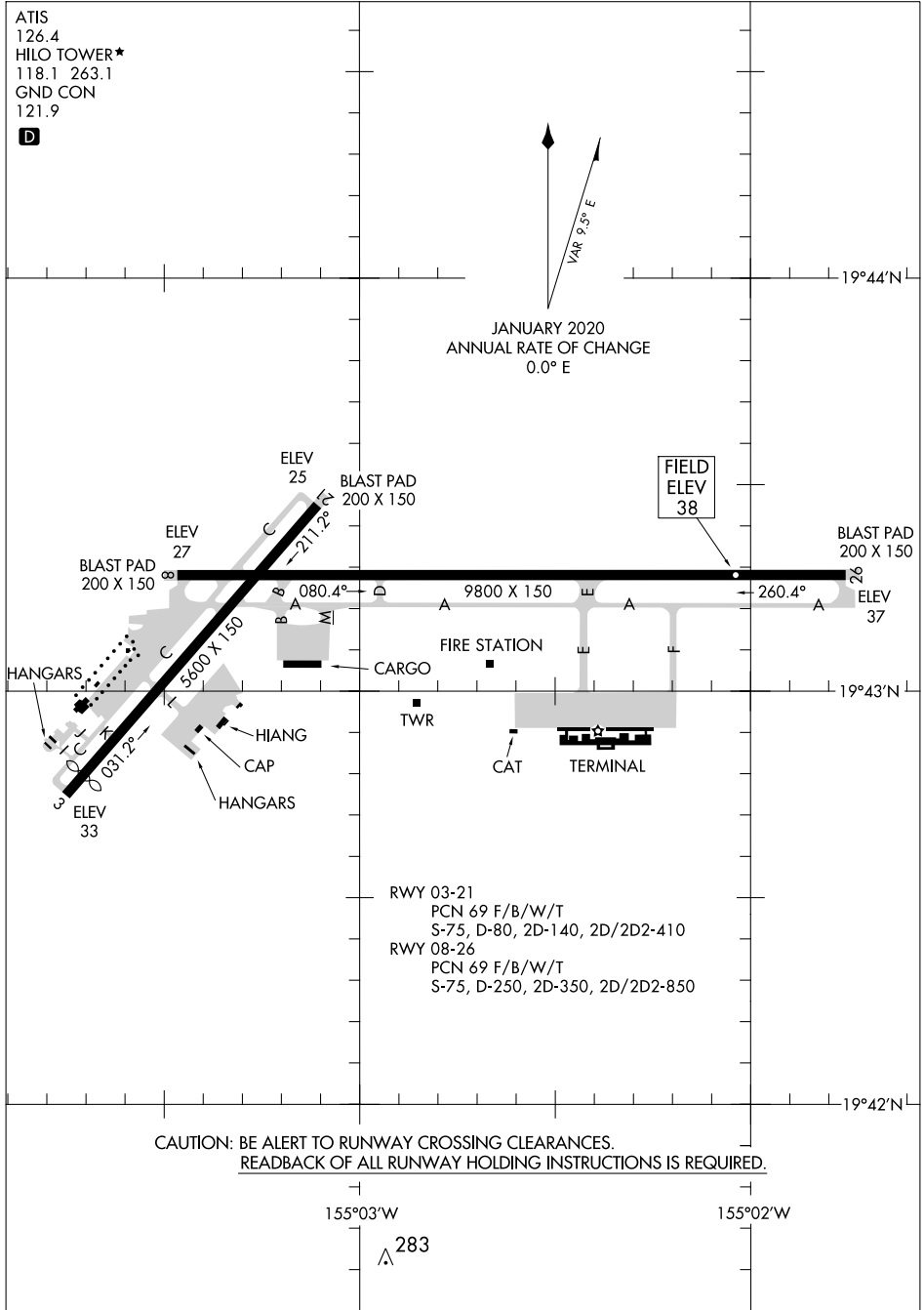
ATIS
126.4
HILO TOWER*
118.1 263.1
GND CON
121.9



JANUARY 2020
ANNUAL RATE OF CHANGE
0.0° E

PAC, 25 JAN 2024 to 21 MAR 2024

PAC, 25 JAN 2024 to 21 MAR 2024



CAUTION: BE ALERT TO RUNWAY CROSSING CLEARANCES.
READBACK OF ALL RUNWAY HOLDING INSTRUCTIONS IS REQUIRED.

155°03'W

155°02'W

△ 283

AIRPORT DIAGRAM

20310

HILO, HAWAII
HILO INTL (ITO) (PHTO)

PPKEO ONE DEPARTURE (RNAV)
(PPKEO1.PPKEO) 25FEB21

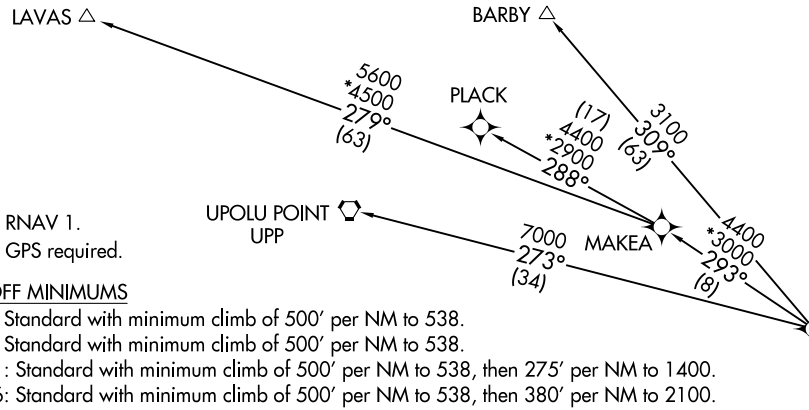
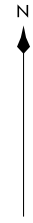
(PPKEO1.PPKEO) 22195
PPKEO ONE DEPARTURE (RNAV)

AL-756 (FAA)

HILO INTL (ITTO)(PHTO)
HILO, HAWAII

**TOP ALTITUDE:
10000**

- ATIS 126.4
- GND CON 121.9
- HILO TOWER* 118.1 263.1
- HILO DEP CON* 119.7 269.2
- HCF CENTER 126.6 284.6



NOTE: RNAV 1.
NOTE: GPS required.

TAKEOFF MINIMUMS

- Rwy 3: Standard with minimum climb of 500' per NM to 538.
- Rwy 8: Standard with minimum climb of 500' per NM to 538.
- Rwy 21: Standard with minimum climb of 500' per NM to 538, then 275' per NM to 1400.
- Rwy 26: Standard with minimum climb of 500' per NM to 538, then 380' per NM to 2100.

DEPARTURE ROUTE DESCRIPTION

- TAKEOFF RUNWAY 3:** Climb on heading 030° to 538, then left turn direct PPKEO, thence
- TAKEOFF RUNWAY 8:** Climb on heading 079° to 538, then left turn direct PPKEO, thence
- TAKEOFF RUNWAY 21:** Climb on heading 210° to intercept course 124° to cross SLPAH at or above 2000, then on track 040° to cross ONOME at or above 3000, at or below 230K, then on track 320° to PPKEO, thence
- TAKEOFF RUNWAY 26:** Climb on heading 259° to 538, then right turn direct PPKEO, thence
- on (transition) maintain 10000 or lower filed altitude, expect filed altitude 5 minutes after departure.
- BARBY TRANSITION (PPKEO1.BARBY)**
- LAVAS TRANSITION (PPKEO1.LAVAS)**
- PLACK TRANSITION (PPKEO1.PLACK)**
- UPOLO POINT TRANSITION (PPKEO1.UPP)**

NOTE: Chart not to scale.

HILO, HAWAII
HILO INTL (ITTO)(PHTO)

LOC/DME I-TO 110.7 Chan 44	APP CRS 259°	Rwy Idg 9800 TDZE 38 Apt Elev 38
--	------------------------	---

ILS or LOC RWY 26

HILO INTL (ITO) (PHTO)

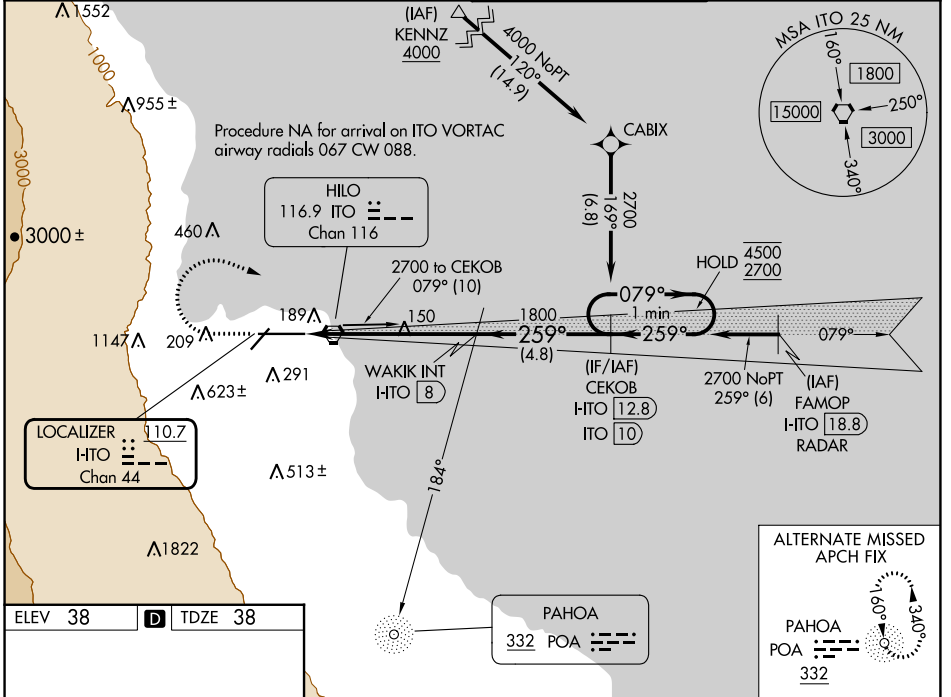
DME required. From KENNZ: RNAV 1-GPS required.

⚠ Circling NA south of Rwy 8-26. Rwy 26 helicopter visibility reduction below 3/4 SM NA. Inop table does not apply to S-ILS 26 all Cats. For inop ALS, increase S-LOC 26 Cat A/B visibility to 1 SM, and Cat C/D to 1 1/2 SM.

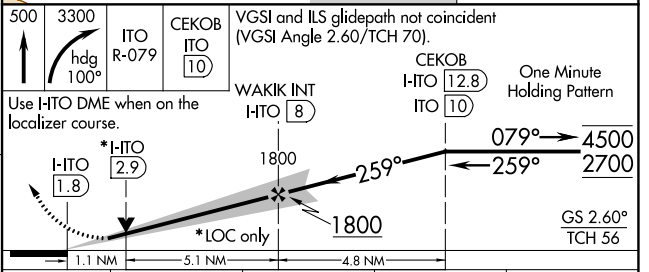
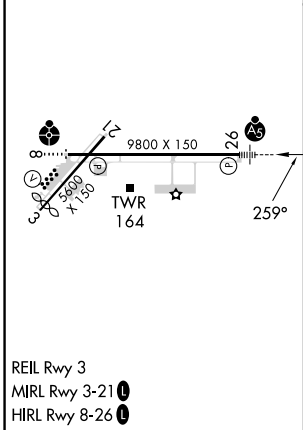
MALSR

MISSED APPROACH: Climb to 500 then climbing right turn to 3300 on heading 100° and on ITO VORTAC R-079 to CEKOB/ITO VORTAC 10 DME and hold, continue climb-in-hold to 3300.

ATIS 126.4	HILO APP CON* 119.7 269.2	HILO TOWER* 118.1(CTAF) 263.1	GND CON 121.9
----------------------	-------------------------------------	---	-------------------------



ELEV 38	D TDZE 38
---------	------------------



CATEGORY	A	B	C	D
S-ILS 26		288-3/4	250 (300-3/4)	
S-LOC 26		420-3/4	382 (400-3/4)	
C CIRCLING	500-1 462 (500-1)	540-1 502 (600-1)	840-2 1/4 802 (900-2 1/4)	1320-3 1282 (1300-3)

RNAV (GPS) RWY 21

HILO INTL (ITO)(PHTO)

APP CRS 210°	Rwy Idg 5510
	TDZE 31
	Apt Elev 38

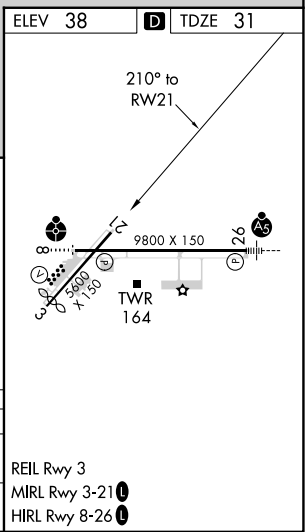
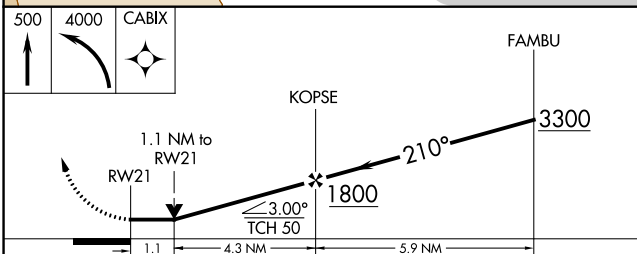
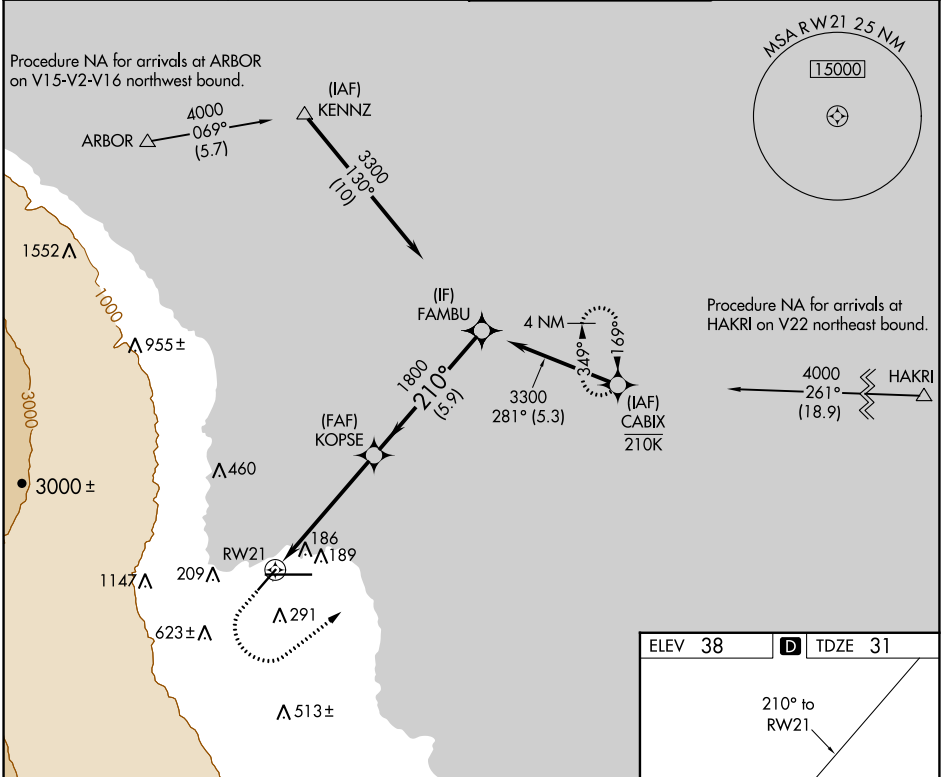
RNP APCH.

▽ Circling NA south of Rwy 8-26. Rwy 21 helicopter visibility reduction below 3/4 SM NA.

▲

MISSED APPROACH: Climb to 500, then climbing left turn to 4000 direct CABIX and hold, continue climb-in-hold to 4000.

ATIS 126.4	HILO APP CON* 119.7 269.2	HILO TOWER* 118.1(CTAF) 0 263.1	GND CON 121.9
----------------------	-------------------------------------	---	-------------------------



CATEGORY	A	B	C	D
LNAV MDA	440-1	409 (500-1)	440-1 1/8	409 (500-1 1/8)
C CIRCLING	500-1 462 (500-1)	540-1 502 (600-1)	840-2 1/4 802 (900-2 1/4)	1320-3 1282 (1300-3)

PAC, 25 JAN 2024 to 21 MAR 2024

PAC, 25 JAN 2024 to 21 MAR 2024

APP CRS	Rwy ldg	9800
259°	TDZE	38
	Apt Elev	38


RNAV (GPS) RWY 26

HILO INTL (ITO) (PHTO)

RNP APCH.

⚠ Circling NA south of Rwy 8-26. Rwy 26 helicopter visibility reduction below $\frac{3}{4}$ SM NA. WAAS VNAV NA. For uncompensated Baro-VNAV systems, LNAV/VNAV NA below 15°C or above 54°C. For inop ALS, increase LNAV/VNAV all Cats visibility to $\frac{3}{8}$ SM and increase LNAV Cat A/B visibility to 1 SM.

MALSR



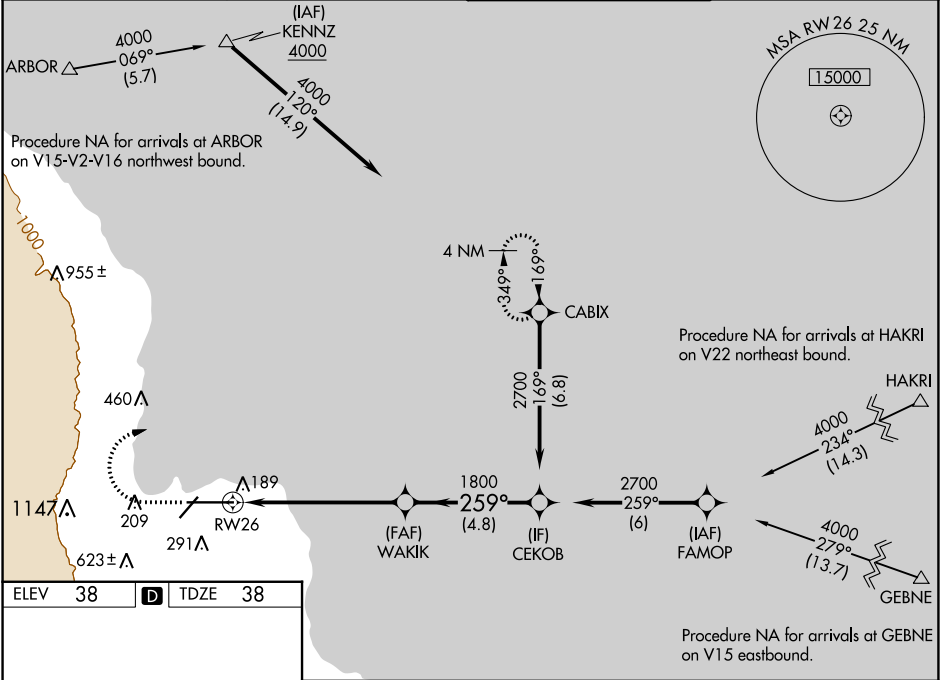
MISSED APPROACH: Climb to 500 then climbing right turn to 4000 direct CABIX and hold, continue climb-in-hold to 4000.

ATIS
126.4

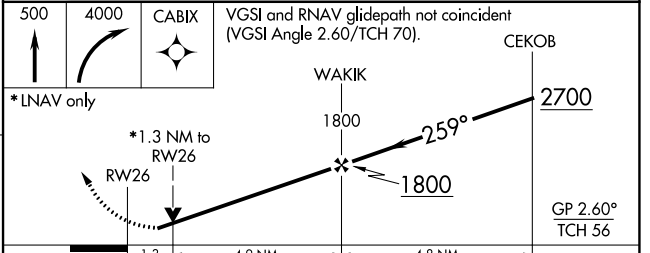
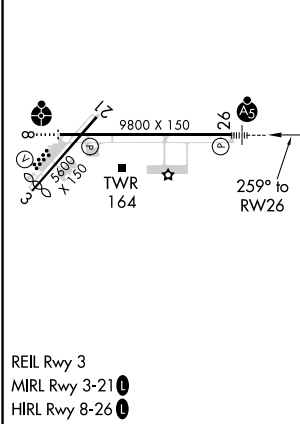
HILO APP CON *
119.7 269.2

HILO TOWER *
118.1 (CTAF) 263.1

GND CON
121.9



ELEV	38	D	TDZE	38
------	-----------	----------	------	-----------



CATEGORY	A	B	C	D
LNAV/VNAV DA		350- $\frac{3}{4}$	312 (400- $\frac{3}{4}$)	
LNAV MDA		460- $\frac{3}{4}$	422 (500- $\frac{3}{4}$)	
C CIRCLING	500-1 462 (500-1)	540-1 502 (600-1)	840-2 $\frac{1}{4}$ 802 (900-2 $\frac{1}{4}$)	1320-3 1282 (1300-3)

PAC, 25 JAN 2024 to 21 MAR 2024

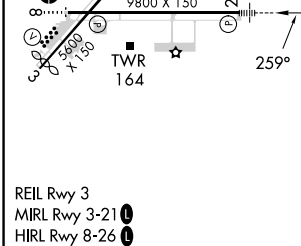
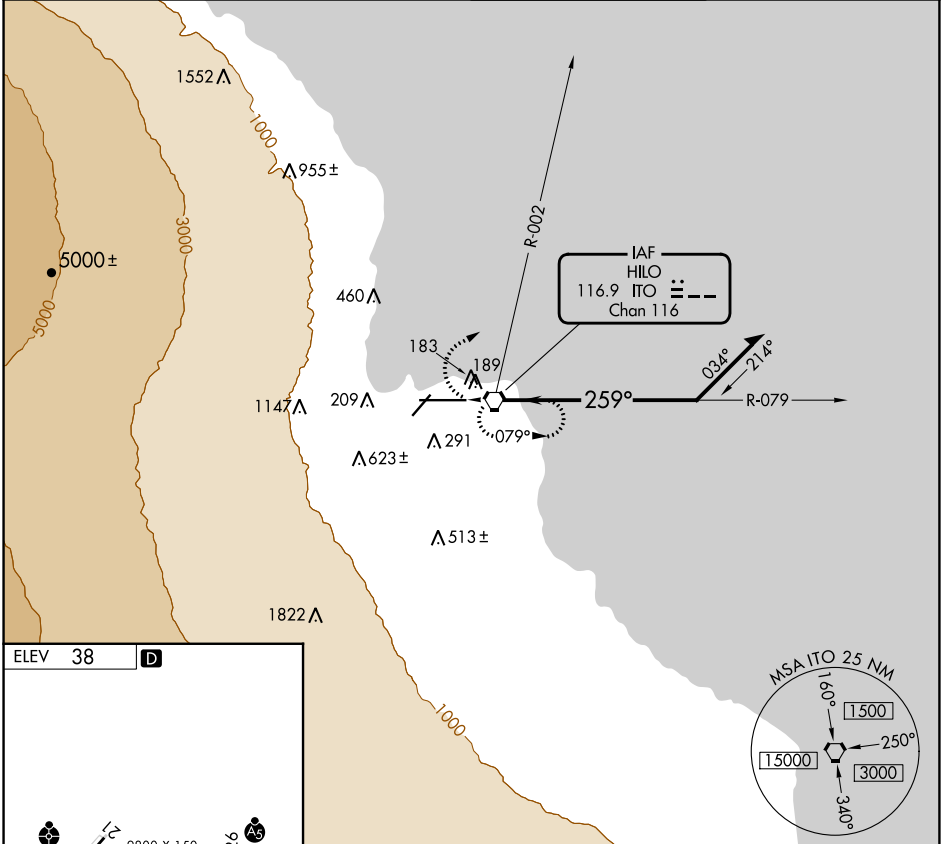
PAC, 25 JAN 2024 to 21 MAR 2024

VORTAC ITO 116.9 Chan 116	APP CRS 259°	Rwy Idg TDZE Apt Elev N/A N/A 38
---	------------------------	--

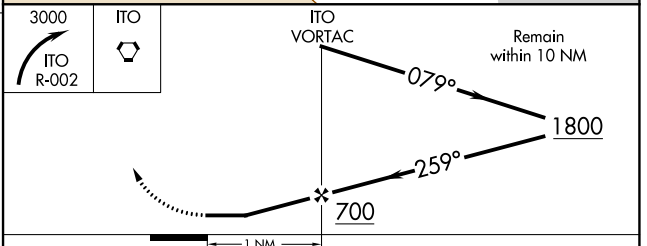
VOR-B
HILO INTL (ITO) (PHTO)

Circling NA south of Rwy 8-26.		MISSED APPROACH: Climbing right turn to 3000 on ITO VORTAC R-002 then direct ITO VORTAC and hold.	
--------------------------------	--	---	--

ATIS 126.4	HILO APP CON * 119.7 269.2	HILO TOWER * 118.1 (CTAF) 263.1	GND CON 121.9
----------------------	--------------------------------------	---	-------------------------



REIL Rwy 3
MIRL Rwy 3-21
HIRL Rwy 8-26



FAF to MAP 1 NM					CATEGORY <input checked="" type="checkbox"/> CIRCLING	A 500-1 462 (500-1)	B 540-1 502 (600-1)	C NA	D NA
Knots	60	90	120	150	180				
Min:Sec	1:00	0:40	0:30	0:24	0:20				

PAC, 25 JAN 2024 to 21 MAR 2024

PAC, 25 JAN 2024 to 21 MAR 2024

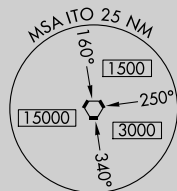
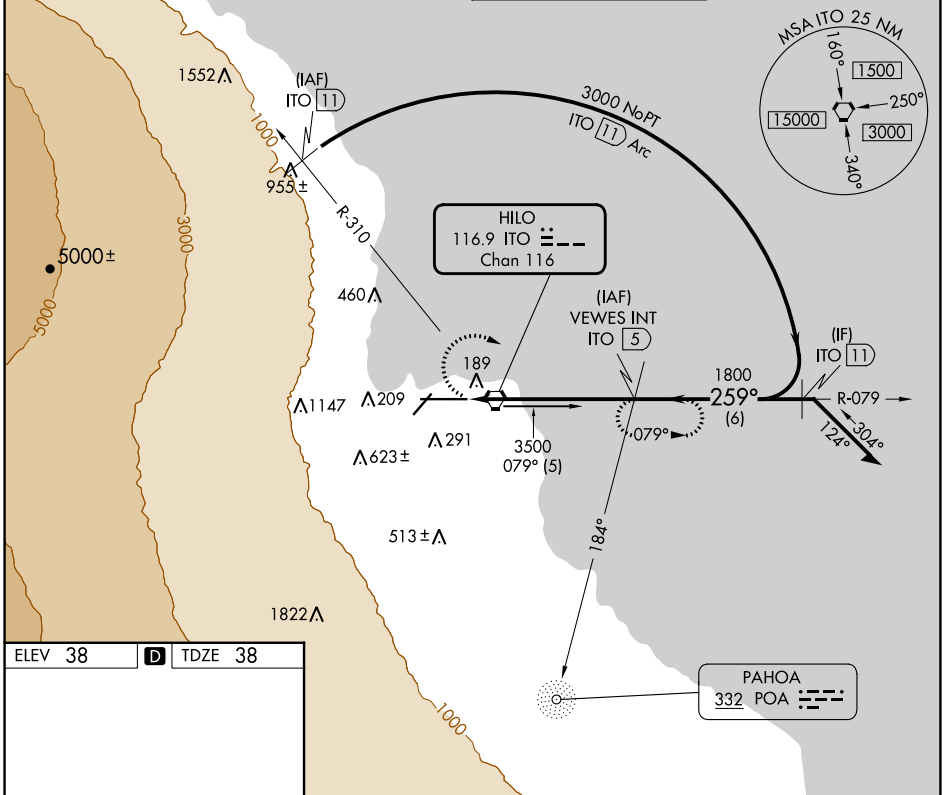
VORTAC ITO 116.9 Chan 116	APP CRS 259°	Rwy Idg 9800 TDZE 38 Apt Elev 38
---	------------------------	---

VOR/DME or TACAN RWY 26

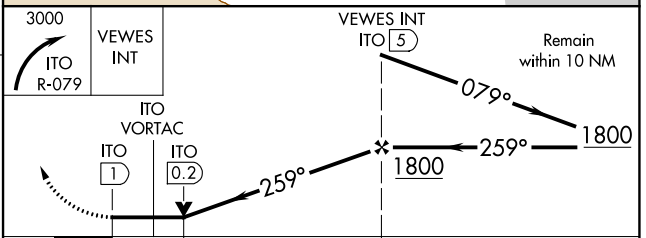
HILO INTL (ITO) (PHTO)

<p>For inop ALS, increase S-26 Cat A/B visibility to 1 SM and Cat D to 1 1/4 SM. Circling NA south of Rwy 8-26. Helicopter visibility reduction below 3/4 SM NA.</p>	<p>MALS</p>	<p>MISSED APPROACH: Climbing right turn to 3000 on ITO VORTAC R-079 to VEWES/5 DME and hold.</p>
--	-------------	--

ATIS 126.4	HILO APP CON* 119.7 269.2	HILO TOWER* 118.1(CTAF) 263.1	GND CON 121.9
----------------------	-------------------------------------	---	-------------------------



ELEV 38	D	TDZE 38
----------------	----------	----------------



CATEGORY	A	B	C	D
S-26	460-3/4 422 (500-3/4)			460-1 422 (500-1)
CIRCLING	500-1 462 (500-1)	540-1 502 (600-1)	840-2 1/4 802 (900-2 1/4)	1320-3 1282 (1300-3)

VOR/DME or TACAN RWY 26

PAC, 25 JAN 2024 to 21 MAR 2024

PAC, 25 JAN 2024 to 21 MAR 2024

VORTAC ITO 116.9 Chan 116	APP CRS 145°	Rwy Idg TDZE Apt Elev 38	N/A N/A 38
---	------------------------	--	---------------------------------------

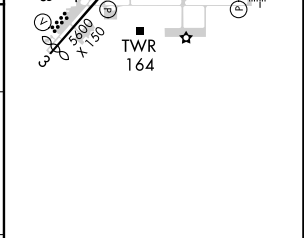
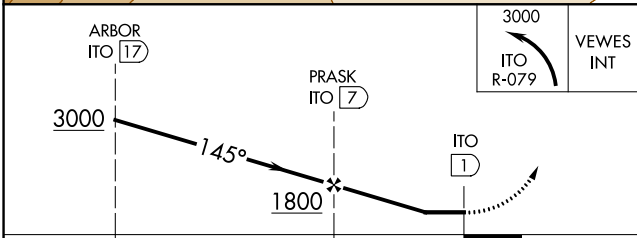
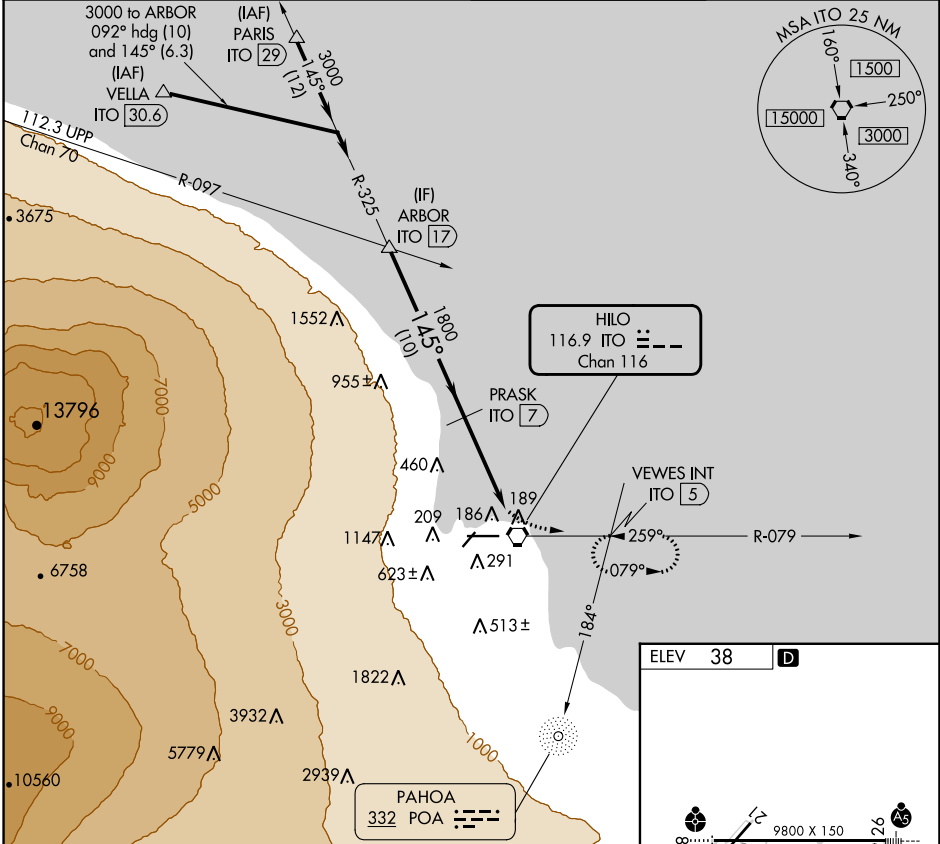
VOR/DME or TACAN-A

HILO INTL (ITO) (PHTO)

⚠ Circling NA south of Rwy 8-26.

⚠ MISSED APPROACH: Climbing left turn to 3000 on ITO VORTAC R-079 to VEWES/5 DME and hold.

ATIS 126.4	HILO APP CON* 119.7 269.2	HILO TOWER* 118.1 (CTAF) 0 263.1	GND CON 121.9
----------------------	-------------------------------------	--	-------------------------



CATEGORY	A	B	C	D
C CIRCLING	500-1 462 (500-1)	540-1 502 (600-1)	840-2 1/4 802 (900-2 1/4)	1320-3 1282 (1300-3)

REIL Rwy 3
MRL Rwy 3-21
HIRL Rwy 8-26

INSTRUMENT APPROACH PROCEDURE CHARTS

IFR ALTERNATE AIRPORT MINIMUMS

Pilots must review the IFR Alternate Minimums Notes to determine alternate airport suitability.

▲NA designation on the approach chart means that pilots may not use that approach as an alternate due to unmonitored facility, absence of weather reporting service, or lack of adequate navigation coverage. Approaches with the **▲**NA designation are not listed in this section. **▲** designation on the approach chart indicates that the approach procedure has non-standard minimums (for aircraft other than helicopters) or restrictions (for all users) for its use as an alternate.

Alternate Minima (ref: 14 CFR 91.169)

	Precision Approach	Non-Precision Approach
Standard	600-2	800-2
▲ Non-Standard or restrictions	As indicated below	As indicated below
Helicopters	For the selected approach: Ceiling: 200' above published ceiling Visibility: the greater of 1 SM visibility or the published visibility	
US Military (USA/USN/USAF)	See Service Regulations	

Note: For alternate airport flight planning purposes, precision approach operations include: ILS, PAR, and GLS, and Non-Precision approach operations include: NDB, VOR, LOC, TACAN, LDA, SDF, ASR, RNAV (GPS) and RNAV (RNP).

NAME ALTERNATE MINIMUMS

BABELTHUAP ISLAND, PW

PALAU INTL (ROR) (PTOR).....**NDB Rwy 9¹**
RNAV (GPS) Rwy 9
RNAV (GPS) Rwy 27

NA except standard for operators with approved weather reporting service.

¹Categories A, B, 900-2; Category C, 900-2½; Category D, 900-2¼.

GUAM, GU

GUAM
 INTL (GUM) (PGUM).....**ILS or LOC Rwy 6L¹**
ILS or LOC Rwy 6R¹
RNAV (GPS) Y Rwy 24L²
RNAV (GPS) Y Rwy 24R³
RNAV (RNP) Z Rwy 24L⁴
RNAV (RNP) Z Rwy 24R⁵
VOR or TACAN Rwy 24R⁶

¹LOC, Categories A, B, 1200-2; Categories C, D, 1200-3.

²Categories A, B, 900-2; Category C, 900-2¼.

³Categories A, B, 900-2; Category C, 900-2½.

⁴Categories A, B, C, D, 900-3.

⁵Categories A, B, C, D, 800-2½.

⁶Categories A, B, 900-2; Categories C, D 900-2¼.

HANA, HI

HANA (HNM) (PHHN).....**RNAV (GPS) Rwy 26**
 Category A, 900-2; Category B, 1100-2.

NAME ALTERNATE MINIMUMS

HILO, HI

HILO INTL (ITO) (PHTO).....**ILS or LOC Rwy 26¹²**
RNAV (GPS) Rwy 21³
RNAV (GPS) Rwy 26³
VOR-B³
VOR/DME or TACAN Rwy 26³
VOR/DME or TACAN-A³

¹NA when control tower closed.

²LOC, Category C, 900-2¼; Category D, 1300-3.

³Category C, 900-2¼; Category D, 1300-3.

HONOLULU, HI

DANIEL K INOUYE
 INTL (HNL) (PHNL).....**LOC Rwy 4R¹**
LOC Rwy 8L¹
RNAV (GPS) Rwy 4L²
RNAV (GPS) Rwy 8R³
RNAV (GPS) Y Rwy 4R⁴
RNAV (GPS) Y Rwy 8L⁵
VOR or TACAN Rwy 4R⁶
VOR or TACAN-A¹
VOR or TACAN-B¹

¹Category C, 800-2¼; Category D, 1400-3.

²Category C, 900-2¼; Category D, 1400-3; Category E, 2000-3.

³Category C, 900-2¼; Category D, 1400-3; Category E, 2100-3.

⁴Category D, 1300-3.

⁵Category C, 900-2¼; Category D, 1300-3.

⁶Category C, 900-2¼; Category D, 1400-3.

NAME ALTERNATE MINIMUMS

KAHULUI, HI

KAHULUI (OGG)
(PHOG).....**ILS Y or LOC Y Rwy 2¹²**
ILS Z or LOC Z Rwy 2¹²
RNAV (GPS) Rwy 20³
RNAV (GPS) Rwy 23⁴
RNAV (GPS) Y Rwy 2³⁵
VOR Z or TACAN Rwy 20³

- ¹NA when control tower closed.
- ²LOC, Category D, 1100-3; Category E, 1700-3.
- ³Category D, 1100-3.
- ⁴Category D, 1200-3.
- ⁵NA when local weather not available.

KAILUA/KONA, HI

ELLISON ONIZUKA KONA INTL AT
KEAHOLE (KOA) (PHKO).....**ILS or LOC Rwy 17¹**
LOC BC Rwy 35²
RNAV (GPS) Rwy 35²
RNAV (GPS) Y Rwy 17²
VOR or TACAN Rwy 17²
VOR or TACAN Rwy 35²

- ¹NA when control tower closed.
- ²NA when local weather not available.

KAPOLEI, OAHU ISLAND, HI

KALAELOA (JOHN RODGERS)
FLD (JRF) (PHJR).....**NDB Rwy 4R¹**
RNAV (GPS) Rwy 4R²

- ¹Category C, 800-2¼; Category D, 800-2½.
- ²NA when local weather not available.

KAUNAKAKAI, HI

MOLOKAI (MKK) (PHMK).....**RNAV (GPS)-B¹²**
VOR or TACAN-A³

- ¹NA when local weather not available.
- ²Category C, 1200-3; Category D, 1500-3.
- ³Categories A, B, 1500-2; Categories C, D, 1500-3.

KOSRAE, FM

KOSRAE (TTK) (PTSA).....**RNAV (GPS) Rwy 5¹**
RNAV (GPS) Rwy 23²

- ¹NA except standard for operators with approved weather reporting service.
- ²NA except categories A,B, standard, Category C, 800-2¼, Category D 800-2½, for operators with approved weather reporting service.

LANAI CITY, HI

LANAI (LNY) (PHNY).....**RNAV (GPS) Rwy 3¹²**
VOR or TACAN or GPS-A³

- ¹NA when local weather not available.
- ²Category C, 900-2½.
- ³NA when local weather not received except for operators with approved weather reporting service.

NAME ALTERNATE MINIMUMS

LIHUE, HI

LIHUE (LIH) (PHLI).....**ILS or LOC Rwy 35¹**
RNAV (GPS) Rwy 17²³
RNAV (GPS) Y Rwy 21²³
RNAV (GPS) Y Rwy 35⁴
RNAV (RNP) Z Rwy 21⁵
VOR or TACAN Rwy 21²

- ¹NA when control tower closed.
- ²NA when local weather not available.
- ³Categories C, D, 800-2½.
- ⁴Category C, 800-2¼; Category D, 800-2½.
- ⁵RNP 0.30, Categories A, B, C, D, 1000-4.
- ⁶Category B, 900-2; Category C, 1000-2¾; Category D, 1000-3.

MIDWAY ATOLL, QM

HENDERSON
FLD (MDY) (PMDY).....**NDB Rwy 6**
NDB Rwy 24
RNAV (GPS) Rwy 6
RNAV (GPS) Rwy 24

NA except standard for operators with approved weather reporting service.

PAGO PAGO, AS

PAGO PAGO
INTL (PPG) (NSTU).....**ILS or LOC Rwy 5¹**
RNAV (GPS) Rwy 5²
RNAV (GPS) Rwy 23²
VOR or TACAN-B²

- ¹ILS, Categories A, B, C, D, 900-2; LOC, Category C, 800-2¼; Category D, 900-2¾.
- ²Category C, 800-2¼; Category D, 900-2¾.

POHNPEI ISLAND, FM

POHNPEI INTL (PNI) (PTPN).....**NDB-A¹**
RNAV (GPS) Rwy 27²
RNAV (GPS) X Rwy 9¹
RNAV (RNP) Y Rwy 9³

- ¹Categories A, B, 1000-2; Categories C, D, 1000-3.
- ²Category D, 800-2¼.
- ³Categories A, B, C, D, 1000-4.

ROTA ISLAND, CQ

BENJAMIN TAISACAN MANGLONA
INTL (GRO) (PGRO).....**RNAV (GPS) Rwy 9**
RNAV (GPS) Rwy 27
NDB Rwy 9¹
NDB Rwy 27

NA except standard for operators with approved weather reporting service.

- ¹Categories A, B, 1200-2; Categories C, D, 1200-3.

SAIPAN ISLAND, CQ

FRANCISCO C ADA/
SAIPAN INTL (GSN) (PGSN).....**NDB Y Rwy 7**
Category D, 800-2¼.

25 JAN 2024 to 21 MAR 2024

25 JAN 2024 to 21 MAR 2024

24025

NAME ALTERNATE MINIMUMS

NAME ALTERNATE MINIMUMS

TINIAN ISLAND, CQ

FRANCISCO MANGLONA BORJA
TINIAN INTL (TNI) (PGWT).....**RNAV (GPS) Rwy 8**
RNAV (GPS) Rwy 26

NA when local weather not available.
Category D, 800-2½.

WENO ISLAND, FM

CHUUK INTL (TKK) (PTKK).....**NDB Rwy 4¹**
NDB Rwy 22²³
RNAV (GPS) Rwy 4²⁴
RNAV (GPS) Rwy 22²⁵

- ¹NA except for operators with approved weather reporting service. Categories A, B, C, D, 800-2½.
- ²NA except standard for operators with approved weather reporting service.
- ³Categories C, D, 800-2½.
- ⁴Categories A, B, C, D, 800-3.
- ⁵Categories A, B, 900-2; Category C, 900-2½; Category D, 900-2½.

YAP ISLAND, FM

YAP INTL (T11) (PTYA).....**NDB Rwy 7¹**
NDB Rwy 25²
NDB/DME Rwy 25²

- ¹Category D, 800-2¼;
- ²Categories A, B, 1000-2; Categories C, D, 1000-3.

25 JAN 2024 to 21 MAR 2024

25 JAN 2024 to 21 MAR 2024

24025

TAKEOFF MINIMUMS, (OBSTACLE) DEPARTURE PROCEDURES, AND DIVERSE VECTOR AREA (RADAR VECTORS)

24025

INSTRUMENT APPROACH PROCEDURE CHARTS

IFR TAKEOFF MINIMUMS AND (OBSTACLE) DEPARTURE PROCEDURES

Civil Airports and Selected Military Airports

ALL USERS: Airports that have Departure Procedures (DPs) designed specifically to assist pilots in avoiding obstacles during the climb to the minimum enroute altitude, and/or airports that have civil IFR takeoff minimums other than standard, are listed below. Takeoff Minimums and Departure Procedures apply to all runways unless otherwise specified. An entry may also be listed that contains only Takeoff Obstacle Notes. Altitudes, unless otherwise indicated, are minimum altitudes in MSL.

DPs specifically designed for obstacle avoidance are referred to as Obstacle Departure Procedures (ODPs) and are textually described below, or published separately as a graphic procedure. If the ODP is published as a graphic procedure, its name will be listed below, and it can be found in either this volume (civil), or the applicable military volume, as appropriate. Users will recognize graphic obstacle DPs by the term "(OBSTACLE)" included in the procedure title; e.g., TETON TWO (OBSTACLE). If not specifically assigned an ODP, SID, or RADAR vector as part of an IFR clearance, an ODP may be required to be flown for obstacle clearance, even though not specifically stated in the IFR clearance. When doing so in this manner, ATC should be informed when the ODP being used contains a specified route to be flown, restrictions before turning, and/or altitude restrictions.

Some ODPs, which are established solely for obstacle avoidance, require a climb in visual conditions to cross the airport, a fix, or a NAVAID in a specified direction, at or above a specified altitude. These procedures are called Visual Climb Over Airport (VCOA). To ensure safe and efficient operations, the pilot must verbally request approval from ATC to fly the VCOA when requesting their IFR clearance.

At some locations where an ODP has been established, a diverse vector area (DVA) may be created to allow RADAR vectors to be used in lieu of an ODP. DVA information will state that headings will be as assigned by ATC and climb gradients, when applicable, will be published immediately following the specified departure procedure.

Graphic DPs designed by ATC to standardize traffic flows, ensure aircraft separation and enhance capacity are referred to as "Standard Instrument Departures (SIDs)". SIDs also provide obstacle clearance and are published under the appropriate airport section. ATC clearance must be received prior to flying a SID.

CIVIL USERS NOTE: Title 14 Code of Federal Regulations Part 91 prescribes standard takeoff rules and establishes takeoff minimums for certain operators as follows: (1) For aircraft, other than helicopters, having two engines or less – one statute mile visibility. (2) For aircraft having more than two engines – one-half statute mile visibility. (3) For helicopters – one-half statute mile visibility. These standard minima apply in the absence of any different minima listed below.

MILITARY USERS NOTE: Civil (nonstandard) takeoff minima are published below. For military takeoff minima, refer to appropriate service directives.

ANDERSEN AFB (UAM) (PGUA)

YIGO, GU

TAKEOFF MINIMUMS AND (OBSTACLE) DEPARTURE PROCEDURES
(23110) (USAF)

TAKEOFF OBSTACLE NOTES:

Rwy 6L, terrain at DER, 222' right of centerline, 618' MSL.

Terrain 3' from DER, 501' left of centerline, 620' MSL.

Terrain 41' from DER, 500' left of centerline, 619' MSL.

Terrain 46' from DER, 512' left of centerline, 619' MSL.

BABELTHUAP ISLAND, PW

PALAU INTL (ROR) (PTRO)

TAKEOFF MINIMUMS AND (OBSTACLE) DEPARTURE PROCEDURES
AMDT 2 31DEC09 (23222) (FAA)

TAKEOFF MINIMUMS:

Rwy 27, 300-1½ or std w/min climb of 320' per NM to 500.

DEPARTURE PROCEDURE:

Rwy 27, climb on heading 271° to 600 before turning right.

TAKEOFF OBSTACLE NOTES:

Rwy 9, trees beginning 19' from DER, 317' right of centerline, up to 26' AGL/188' MSL.

Tree 89' from DER, 271' left of centerline, 178' MSL.

Vegetation, trees beginning 107' from DER, 131' left of centerline, up to 187' MSL.

Tree 390' from DER, 320' right of centerline, 34' AGL/191' MSL.

Rwy 27, trees beginning 23' from DER, 296' right of centerline, up to 17' AGL/180' MSL.

Tree 238' from DER, 382' right of centerline, 184' MSL.

Trees beginning 439' from DER, 372' right of centerline, up to 46' AGL/206' MSL.

Tree 824' from DER, 465' left of centerline, 47' AGL/205' MSL.

Tree 1757' from DER, 258' right of centerline, 232' MSL.

Trees beginning 4512' from DER, 486' right of centerline, up to 356' MSL.

Tree 5708' from DER, 652' right of centerline, 43' AGL/371' MSL.

Tree 5736' from DER, 670' right of centerline, 363' MSL.

TAKEOFF MINIMUMS, (OBSTACLE) DEPARTURE PROCEDURES, AND DIVERSE VECTOR AREA (RADAR VECTORS)

24025

PAC

TAKEOFF MINIMUMS, (OBSTACLE) DEPARTURE PROCEDURES, AND DIVERSE VECTOR AREA (RADAR VECTORS)

24025

BARKING SANDS PMRF (BKH) (PHBK)

KEKAHA, HI

TAKEOFF MINIMUMS AND (OBSTACLE) DEPARTURE PROCEDURES

ORIG 14JUL22 (22195) (USN)

DEPARTURE PROCEDURE:

Diverse departure NA.

BRADSHAW AAF (BSF) (PHSF)

CAMP POHAKULOLO, HI

TAKEOFF MINIMUMS AND (OBSTACLE) DEPARTURE PROCEDURES

AMDT 2 07SEP23 (23250) (USA)

TAKEOFF MINIMUMS:

Rwy 9, 8200-5 for VCOA.

DEPARTURE PROCEDURE:

Rwy 9, obtain ATC approval for VOCA when requesting IFR clearance. Climb in visual conditions to cross Bradshaw AAF at or above 14,200 before proceeding on course.**Rwy 27**, climb hgt 271° to join UPP VORTAC R-154 to UPP, climb and maintain at or above 8000 before proceeding on course.

TAKEOFF OBSTACLE NOTES:

Rwy 9, pylon 2667' from DER, 705' right of centerline, 55' AGL/6339' MSL.

Pylon 2578' from DER, 764' right of centerline, 55' AGL/6332' MSL.

Pylon 2382' from DER, 804' right of centerline, 55' AGL/6326' MSL.

Pylon 2193' from DER, 841' right of centerline, 55' AGL/6320' MSL.

Pylon 2005' from DER, 879' right of centerline, 55' AGL/6304' MSL.

Pylon 1785' from DER, 925' right of centerline, 55' AGL/6287' MSL.

Terrain 2000' from DER, 51' left of centerline, 6258' MSL.

BUCHOLZ AAF (KWA) (PKWA)

KWAJALEIN USAKA, MI

TAKEOFF MINIMUMS AND (OBSTACLE) DEPARTURE PROCEDURES

AMDT 2 02DEC21 (21336) (USA)

TAKEOFF OBSTACLE NOTES:

Rwy 6, RADAR antenna 10' from DER, 244' left of centerline, 13' AGL/28' MSL.

Terrain 201' from DER, 546' left of centerline, 30' MSL.

GUAM, GU

GUAM INTL (GUM) (PGUM)

TAKEOFF MINIMUMS AND (OBSTACLE) DEPARTURE PROCEDURES

AMDT 2 25JAN24 (24025) (FAA)

TAKEOFF MINIMUMS:

Rwy 6L, 400-1¼ or std w/min climb of 450'/NM to 800.**Rwy 6R**, 400-1¼ or std w/min climb of 522'/NM to 900.**Rwy 24L**, std w/min climb of 280'/NM to 1700.**Rwy 24R**, std w/min climb of 286'/NM to 1700.

DEPARTURE PROCEDURE:

Rwys 6L/R, climb on heading 063° to 1000 before turning southeast.

TAKEOFF OBSTACLE NOTES:

Rwy 6L, terrain 11' from DER, 300' left of centerline, 306' MSL.

Vegetation, terrain beginning 159' from DER, 316' left of centerline, up to 312' MSL.

Terrain beginning 196' from DER, 316' right of centerline, up to 315' MSL.

Terrain 321' from DER, 452' left of centerline, 315' MSL.

Terrain 328' from DER, 563' right of centerline, 322' MSL.

Terrain 378' from DER, 333' left of centerline, 317' MSL.

Terrain beginning 426' from DER, 374' right of centerline, up to 326' MSL.

Trees, terrain beginning 432' from DER, 336' left of centerline, up to 352' MSL.

Terrain beginning 528' from DER, 443' right of centerline, up to 332' MSL.

Trees beginning 599' from DER, 387' left of centerline, up to 361' MSL.

Terrain beginning 611' from DER, 430' right of centerline, up to 337' MSL.

Terrain 700' from DER, 586' right of centerline, 341' MSL.

Trees, terrain beginning 711' from DER, 348' left of centerline, up to 371' MSL.

Terrain 768' from DER, 644' right of centerline, 344' MSL.

Terrain beginning 774' from DER, 465' right of centerline, up to 345' MSL.

Trees, terrain beginning 802' from DER, 358' left of centerline, up to 376' MSL.

Terrain 853' from DER, 688' right of centerline, 348' MSL.

Fences, terrain beginning 885' from DER, 447' right of centerline, up to 9' AGL/358' MSL.

Tree, terrain, fences, pole, sign beginning 993' from DER, 409' right of centerline, up to 371' MSL.

Trees, pole, terrain beginning 1050' from DER, 375' left of centerline, up to 380' MSL.

Trees, traverse ways, sign, poles, terrain, fences beginning 1194' from DER, 359' right of centerline, up to 385' MSL.

Trees, terrain beginning 1215' from DER, 341' left of centerline, up to 392' MSL.

Trees, terrain, poles, fences, traverse ways beginning 1328' from DER, 339' right of centerline, up to 390' MSL.

Trees, terrain beginning 1482' from DER, 318' left of centerline, up to 407' MSL.

Trees, terrain, fences, poles, traverse ways beginning 1524' from DER, 329' right of centerline, up to 395' MSL.

CON'T

TAKEOFF MINIMUMS, (OBSTACLE) DEPARTURE PROCEDURES, AND DIVERSE VECTOR AREA (RADAR VECTORS)

24025

TAKEOFF MINIMUMS, (OBSTACLE) DEPARTURE PROCEDURES, AND DIVERSE VECTOR AREA (RADAR VECTORS)

24025

GUAM, GU (CON'T)

GUAM INTL (GUM) (PGUM) (CON'T)

Rwy 6L (CON'T), trees, terrain, vegetation beginning 1649' from DER, 79' left of centerline, up to 411' MSL.

Trees, terrain, fences, buildings, poles, traverse way beginning 1701' from DER, 71' right of centerline, up to 399' MSL.
Tree 1861' from DER, 618' left of centerline, 415' MSL.

Trees, terrain beginning 1861' from DER, 3' left of centerline, up to 417' MSL.

Tree, fences beginning 1914' from DER, 733' right of centerline, up to 404' MSL.

Trees, terrain, building, fences beginning 1933' from DER, 110' right of centerline, up to 406' MSL.

Trees, terrain, traverse way, building, fences, pole beginning 1986' from DER, 68' right of centerline, up to 413' MSL.

Trees, buildings, terrain, fences, poles, traverse way beginning 2056' from DER, 78' right of centerline, up to 423' MSL.

Trees, building, fence, pole beginning 2271' from DER, 463' right of centerline, up to 427' MSL.

Trees, terrain, fences, buildings, traverse ways, poles, vertical structure beginning 2301' from DER, 301' right of centerline, up to 435' MSL.

Trees, terrain beginning 2418' from DER, 294' left of centerline, up to 419' MSL.

Trees, terrain beginning 2611' from DER, 297' left of centerline, up to 423' MSL.

Trees, terrain beginning 2761' from DER, 302' left of centerline, up to 426' MSL.

Trees beginning 2908' from DER, 504' left of centerline, up to 427' MSL.

Trees, building beginning 2918' from DER, 497' right of centerline, up to 437' MSL.

Trees, terrain, vegetation, transmission lines, poles beginning 2924' from DER, 15' left of centerline, up to 434' MSL.

Transmission lines, trees, fences, terrain, buildings, poles, traverse ways, signs, tanks, walls, vegetation beginning 2933' from DER, 2' right of centerline, up to 67' AGL/469' MSL.

Poles, trees, transmission line beginning 3770' from DER, 7' left of centerline, up to 86' AGL/436' MSL.

Trees, buildings, vegetation, traverse way, pole, rig, terrain beginning 4058' from DER, 45' right of centerline, up to 473' MSL.

Trees, poles, fences, buildings beginning 4683' from DER, 578' right of centerline, up to 474' MSL.

Trees, poles beginning 5048' from DER, 254' right of centerline, up to 480' MSL.

Pole, trees, building beginning 5205' from DER, 266' right of centerline, up to 34' AGL/516' MSL.

Trees, pole beginning 5486' from DER, 378' right of centerline, up to 536' MSL.

Trees, buildings beginning 5635' from DER, 492' right of centerline, up to 556' MSL.

Trees, poles, buildings beginning 5767' from DER, 640' right of centerline, up to 576' MSL.

Trees, poles beginning 1.1 NM from DER, 697' right of centerline, up to 622' MSL.

Rwy 6R, terrain beginning 0' from DER, 110' left of centerline, up to 302' MSL.

Light poles 9' from DER, 159' left of centerline, 1' AGL/303' MSL.

Signs beginning 58' from DER, 280' left of centerline, up to 4' AGL/304' MSL.

Trees beginning 139' from DER, 442' right of centerline, up to 378' MSL.

Trees, terrain beginning 163' from DER, 408' right of centerline, up to 390' MSL.

Trees, terrain beginning 616' from DER, 408' right of centerline, up to 405' MSL.

Trees, pole, terrain beginning 939' from DER, 276' right of centerline, up to 407' MSL.

Trees, terrain beginning 1110' from DER, 449' right of centerline, up to 414' MSL.

Trees beginning 1231' from DER, 572' right of centerline, up to 417' MSL.

Trees, terrain beginning 1291' from DER, 406' right of centerline, up to 424' MSL.

Trees, terrain, fences, buildings, poles, traverse ways, wall beginning 1648' from DER, on and right of centerline, up to 432' MSL.

Terrain 1853' from DER, 10' left of centerline, 348' MSL.

Fences beginning 1884' from DER, 27' left of centerline, up to 9' AGL/358' MSL.

Pole, fences, sign beginning 2073' from DER, 20' left of centerline, up to 14' AGL/362' MSL.

Trees, sign, pole, fences beginning 2194' from DER, 12' left of centerline, up to 385' MSL.

Trees, pole, fences beginning 2328' from DER, on and left of centerline, up to 390' MSL.

Trees, fences beginning 2524' from DER, 24' left of centerline, up to 395' MSL.

Tree 2903' from DER, 20' left of centerline, 397' MSL.

Tree, fence beginning 2932' from DER, 12' left of centerline, up to 406' MSL.

Trees, fences beginning 3033' from DER, on and left of centerline, up to 409' MSL.

Buildings, trees, fences, poles beginning 3208' from DER, 6' right of centerline, up to 29' AGL/435' MSL.

Trees, fences, buildings beginning 3298' from DER, 16' right of centerline, up to 444' MSL.

Transmission line, buildings, traverse way, trees, fences, poles, vertical structure beginning 3359' from DER, 5' right of centerline, up to 76' AGL/482' MSL.

Tree 3363' from DER, 1081' left of centerline, 414' MSL.

Trees beginning 3430' from DER, 220' left of centerline, up to 415' MSL.

Trees beginning 3524' from DER, 60' left of centerline, up to 417' MSL.

Transmission lines, trees, buildings, fences, traverse ways, poles, signs, terrain beginning 3571' from DER, 20' right of centerline, up to 81' AGL/486' MSL.

Tree 3590' from DER, 1430' left of centerline, 419' MSL.

Tree 3609' from DER, 338' left of centerline, 421' MSL.

Trees beginning 3616' from DER, 57' left of centerline, up to 425' MSL.

Tree 3920' from DER, 1257' left of centerline, 427' MSL.

Trees beginning 3924' from DER, 37' left of centerline, up to 434' MSL.

Trees, poles, buildings, tanks, transmission line, traverse ways beginning 4375' from DER, 56' right of centerline, up to 516' MSL.

Trees, transmission lines, pole beginning 4427' from DER, 42' left of centerline, up to 446' MSL.

Trees, buildings, pole, traverse way beginning 4681' from DER, 179' right of centerline, up to 522' MSL.

Trees, buildings, poles beginning 4792' from DER, 29' right of centerline, up to 554' MSL.

Trees, poles beginning 4814' from DER, 23' left of centerline, up to 456' MSL.

Trees, poles, traverse ways, buildings beginning 5014' from DER, 590' right of centerline, up to 568' MSL.

Trees, vegetation beginning 5058' from DER, 9' left of centerline, up to 473' MSL.

Trees, buildings, pole beginning 5218' from DER, 16' right of centerline, up to 585' MSL.

CON'T

TAKEOFF MINIMUMS, (OBSTACLE) DEPARTURE PROCEDURES, AND DIVERSE VECTOR AREA (RADAR VECTORS)

24025

TAKEOFF MINIMUMS, (OBSTACLE) DEPARTURE PROCEDURES, AND DIVERSE VECTOR AREA (RADAR VECTORS)

24025

GUAM, GU (CON'T)

GUAM INTL (GUM) (PGUM) (CON'T)

Rwy 6R (CON'T), trees, buildings, pole beginning 5418' from DER, 19' right of centerline, up to 597' MSL.

Trees, pole beginning 5684' from DER, 54' right of centerline, up to 615' MSL.

Tree 5814' from DER, 2036' right of centerline, 636' MSL.

Poles, trees beginning 5850' from DER, 113' right of centerline, up to 41' AGL/654' MSL.

Trees, pole beginning 5965' from DER, 529' right of centerline, up to 660' MSL.

Buildings, trees, poles, terrain beginning 1 NM from DER, 26' right of centerline, up to 90' AGL/702' MSL.

Tree 1.1 NM from DER, 150' left of centerline, 479' MSL.

Rwy 24L, light poles, terrain beginning 10' from DER, 85' right of centerline, up to 2' AGL/233' MSL.

Light poles 11' from DER, 4' left of centerline, 1' AGL/232' MSL.

Signs beginning 59' from DER, 282' right of centerline, up to 3' AGL/239' MSL.

Tree 1416' from DER, 365' left of centerline, 269' MSL.

Tree 1511' from DER, 405' left of centerline, 270' MSL.

Tree 1578' from DER, 333' left of centerline, 273' MSL.

Rwy 24R, light poles, sign beginning 12' from DER, 2' right of centerline, up to 2' AGL/235' MSL.

HANA, HI

HANA (HNM) (PHHN)

TAKEOFF MINIMUMS AND (OBSTACLE) DEPARTURE PROCEDURES

ORIG 01SEP05 (05244) (FAA)

DEPARTURE PROCEDURE:

Use LINDBERG DEPARTURE.

HILO, HI

HILO INTL (ITO) (PHTO)

TAKEOFF MINIMUMS AND (OBSTACLE) DEPARTURE PROCEDURES

AMDT 6 22DEC05 (05356) (FAA)

DEPARTURE PROCEDURE:

Use PARIS DEPARTURE.

DIVERSE VECTOR AREA (RADAR VECTORS)

AMDT 1 26MAY16 (16147) (FAA)

Rwys 3, 8, heading as assigned by ATC.

Rwy 21, heading as assigned by ATC; requires minimum climb of 300' per NM to 1300.

Rwy 26, heading as assigned by ATC; requires minimum climb of 420' per NM to 2800.

HONOLULU, HI

DANIEL K INOUYE INTL (HNL) (PHNL)

TAKEOFF MINIMUMS AND (OBSTACLE) DEPARTURE PROCEDURES

AMDT 8B 08NOV18 (18312) (FAA)

DEPARTURE PROCEDURE:

Use HONOLULU DEPARTURE.

TAKEOFF OBSTACLE NOTES:

Rwy 4L, multiple lights beginning 630' from DER, 236' left of centerline, 102' right of centerline, up to 84' AGL/ 92' MSL.

Light on building 669' from DER, 394' left of centerline, 29' AGL/37' MSL.

Stack on building 2488' from DER, 219' right of centerline 72' AGL/80' MSL.

Multiple trees beginning 1253' from DER, 209' left of centerline, 935' right of centerline, up to 64' AGL/72' MSL.

Bush 450' from DER, 234' left of centerline, 14' AGL/ 22' MSL.

Rwy 4R, stack on building, 2442' from DER, 283' left of centerline, 72' AGL/80' MSL.

Multiple trees beginning 1206' from DER, 711' left of centerline, 433' right of centerline, up to 64' AGL/72' MSL.

Multiple lights beginning 1072' from DER, 399' left of centerline, 504' right of centerline, up to 36' AGL/44' MSL.

Pole 2110' from DER, 951' left of centerline, 59' AGL/67' MSL.

Rwy 22L, multiple bushes beginning 265' from DER, 396' right of centerline, up to 17' AGL/31' MSL.

Tree 1065' from DER, 499' right of centerline, 30' AGL/38' MSL.

Rwy 22R, rod on OL ASR 1451' from DER, 827' right of centerline, 76' AGL/84' MSL.

Tree 853' from DER, 308' right of centerline, 43' AGL/51' MSL.

Rwy 26L, ship 1.1 NM from DER, on centerline, 208' AGL/208' MSL.

Rwy 26R, multiple light poles beginning 2120' from DER, 813' right of centerline, up to 105' AGL/111' MSL.

DIVERSE VECTOR AREA (RADAR VECTORS)

AMDT 2 25FEB21 (21056) (FAA)

Rwys 4L/R, heading as assigned by ATC; requires min. climb of 490' per NM to 2100, do not exceed 180K until established on assigned heading.

Rwy 8L, heading as assigned by ATC; requires min. climb of 360' per NM to 1700.

Rwy 8R, heading as assigned by ATC; requires min. climb of 305' per NM to 500.

Rwys 22L/R, heading as assigned by ATC; requires min. climb of 320' per NM to 3700.

Rwy 26L, heading as assigned by ATC; requires min. climb of 360' per NM to 3700.

Rwy 26R, heading as assigned by ATC; requires min. climb of 430' per NM to 4400.

TAKEOFF MINIMUMS, (OBSTACLE) DEPARTURE PROCEDURES, AND DIVERSE VECTOR AREA (RADAR VECTORS)

24025

TAKEOFF MINIMUMS, (OBSTACLE) DEPARTURE PROCEDURES, AND DIVERSE VECTOR AREA (RADAR VECTORS)

24025

KAHULUI, HI

KAHULUI (OGG) (PHOG)

TAKEOFF MINIMUMS AND (OBSTACLE) DEPARTURE PROCEDURES

AMDT 7 29MAY14 (14149) (FAA)

TAKEOFF MINIMUMS:

Rwy 23, NA-ATC.

DEPARTURE PROCEDURE:

Rwy 2, climb on a heading 316° CW 052° from DER to 10600 before proceeding on course.**Rwy 5**, climb on a heading 312° CW 040° from DER to 10700 before proceeding on course.**Rwy 20**, climb on heading 185° from DER to 11000 before proceeding on course.

TAKEOFF OBSTACLE NOTES:

Rwy 2, bush and trees beginning 190' from DER, 363' left of centerline, up to 60' AGL/79' MSL.

Bushes and obstruction light on building beginning 339' from DER, 289' right of centerline, up to 20' AGL/25' MSL.

Rwy 5, tree 2359' from DER, 512' left of centerline, 56' AGL/75' MSL.

Fence 20' from DER, 304' right of centerline, 11' AGL/31' MSL.

Bushes, trees and fence beginning 228' from DER, 300' right of centerline, up to 76' AGL/95' MSL.

DIVERSE VECTOR AREA (RADAR VECTORS)

AMDT 2 05OCT23 (23278) (FAA)

Rwys 2, 5, heading as assigned by ATC.**Rwy 20**, heading as assigned by ATC; requires min climb of 490'/NM to 5000.

KAILUA-KONA, HI

ELLISON ONIZUKA KONA INTL AT KEAHOLE (KOA) (PHKO)

TAKEOFF MINIMUMS AND (OBSTACLE) DEPARTURE PROCEDURES

AMDT 5A 29MAR18 (18088) (FAA)

DEPARTURE PROCEDURE:

Rwy 17, climb on heading 174° to 500 then climbing right turn heading 357° and KOA R-327 to MYNAH INT for assigned route.**Rwy 35**, eastbound climb on heading 354° to intercept MUE R-246 for assigned route; northwest bound climb heading 354° to 500 then climbing left turn to assigned route.

TAKEOFF OBSTACLE NOTES:

Rwy 17, obstruction light on AMOM at DER, 350' right of centerline, 25' AGL/62' MSL.**Rwy 35**, tree 1606' from DER, 7211' right of centerline, 15' AGL/94' MSL.

DIVERSE VECTOR AREA (RADAR VECTORS)

AMDT 1 15OCT15 (15288) (FAA)

Rwys 17, 35, heading as assigned by ATC.

KALAUPAPA, HI

KALAUPAPA (LUP) (PHLU)

TAKEOFF MINIMUMS AND (OBSTACLE) DEPARTURE PROCEDURES

ORIG 10MAR11 (11069) (FAA)

DEPARTURE PROCEDURE:

Use KALAUPAPA ONE DEPARTURE.

KAMUELA, HI

WAIMEA-KOHALA (MUE) (PHMU)

TAKEOFF MINIMUMS AND (OBSTACLE) DEPARTURE PROCEDURES

AMDT 1 17MAR05 (05076) (FAA)

TAKEOFF MINIMUMS:

Rwy 4, 400-2 or std. with a min. climb of 240' per NM to 3100.

DEPARTURE PROCEDURE:

Rwy 4, climb via heading 041° to 3100 then climbing right turn via heading 080° and MUE VOR/DME R-057 to 6000 to VELLA INT, then as assigned.**Rwy 22**, climb via heading 233° and MUE VOR/DME R-234 to 5000 to JASON INT, then as assigned.

TAKEOFF OBSTACLE NOTES:

Rwy 4, windsock 158' from DER, 299' right of centerline, 25' AGL/2702' MSL.

Fence 2754' from DER, 323' right of centerline, 12' AGL/2741' MSL.

Tree 5200' from DER, 179' right of centerline, 50' AGL/2817' MSL.

Tree 5331' from DER, 110' left of centerline, 50' AGL/2829' MSL.

Tree 1.3 NM from DER, 739' right of centerline, 50' AGL/2864' MSL.

Tree 1.3 NM from DER, 1741' left of centerline, 50' AGL/2889' MSL.

Antenna 1.8 NM from DER, 1094' left of centerline 152' AGL/2992' MSL.

Rising terrain beginning 1.5 NM from DER, 3.9 NM left of centerline, up to 13796' MSL.

Rwy 22, cactus at DER, 191' left of centerline, 10' AGL/2668' MSL.

Tree at DER, 353' right of centerline, 50' AGL/2687' MSL.

Bush 673' from DER, 186' left of centerline, 30' AGL/2673' MSL.

Pole 1058' from DER, 124' left of centerline, 20' AGL/2683' MSL.

Rapidly rising terrain beginning 1.5 NM from DER, 4209' left of centerline, up to 5513' MSL.

TAKEOFF MINIMUMS, (OBSTACLE) DEPARTURE PROCEDURES, AND DIVERSE VECTOR AREA (RADAR VECTORS)

24025

TAKEOFF MINIMUMS, (OBSTACLE) DEPARTURE PROCEDURES, AND DIVERSE VECTOR AREA (RADAR VECTORS)

24025

KANEOHE BAY MCAS (NGF) (PHNG)

MOKAPU POINT, HI

TAKEOFF MINIMUMS AND (OBSTACLE) DEPARTURE PROCEDURES

AMDT 2 12AUG21 (21224) (USN)

TAKEOFF MINIMUMS:

Rwy 4, diverse departures authorized 335° clockwise 020°.**Rwy 22**, diverse departure NA. Std w/min climb of 975'/NM to 3900 or 1300-3 for VCOA.

VCOA:

Obtain ATC approval for VCOA when requesting IFR clearance. Climb in visual conditions to cross NGF TACAN at or above 1200, intercept NGF TACAN R-340 or R-360 as assigned by ATC. Do not exceed 250Kt until passing NGF.

TAKEOFF OBSTACLE NOTES:

Rwy 4, terrain 0' from DER, 484' right of centerline, 26' MSL.

Terrain 28' from DER, 479' right of centerline, 26' MSL.

KAPOLEI, OAHU ISLAND, HI

KALAELOA (JOHN RODGERS FLD) (JRF) (PHJR)

TAKEOFF MINIMUMS AND (OBSTACLE) DEPARTURE PROCEDURES

ORIG 22OCT09 (21112) (FAA)

DEPARTURE PROCEDURE:

DME required.

Rwys 4L, 4R, 11, climb heading 200° to intercept HNL VORTAC R-241 to GECKO/HNL 22.4 DME before proceeding on course.**Rwys 22L, 22R**, climb heading 224° to intercept HNL VORTAC R-241 to GECKO/HNL 22.4 DME before proceeding on course.**Rwy 29**, climb heading 210° to intercept HNL VORTAC R-241 to GECKO/HNL 22.4 DME before proceeding on course.

TAKEOFF OBSTACLE NOTES:

Rwy 11, tree 1533' from DER, 831' left of centerline, 60' AGL/70' MSL.**Rwy 22L**, vehicles on road 305' from DER, 195' left of centerline, 15' AGL/26' MSL.**Rwy 29**, tree 1794' from DER, 573' left of centerline, 60' AGL/99' MSL.

KAUNAKAKAI, HI

MOLOKAI (MKK) (PHMK)

TAKEOFF MINIMUMS AND (OBSTACLE) DEPARTURE PROCEDURES

AMDT 6 19MAY14 (14149) (FAA)

DEPARTURE PROCEDURE:

Use KAUNAKAKAI DEPARTURE.

DIVERSE VECTOR AREA (RADAR VECTORS)

AMDT 1 15OCT15 (15288) (FAA)

Rwy 17, heading as assigned by ATC.**Rwy 23**, heading as assigned by ATC; requires minimum climb of 460' per NM to 2000.

KOSRAE, FM

KOSRAE (TTK) (PTSA)

TAKEOFF MINIMUMS AND (OBSTACLE) DEPARTURE PROCEDURES

ORIG-A 12MAR09 (09071) (FAA)

CAUTION: Ships with masts to 200' traverse harbor entrance located on west side of runway.

DEPARTURE PROCEDURE:

Rwy 5, left turn.**Rwy 23**, right turn, climb to 2000 or above before turning east.

LANAI CITY, HI

LANAI (LNY) (PHNY)

TAKEOFF MINIMUMS AND (OBSTACLE) DEPARTURE PROCEDURES

AMDT 5 27AUG09 (09239) (FAA)

TAKEOFF MINIMUMS:

Rwy 3, 400-1 or std. w/ min. climb of 370' per NM to 2700 or 2500-3 for climb in visual conditions.

DEPARTURE PROCEDURE:

Rwy 3, climb heading 033° to 1720 before turning left. Climb heading 300° or 180° to intercept route or airway, then continue as cleared. Maintain maximum 210 kts until turn is completed or for climb in visual conditions cross LNY VORTAC eastbound at or above 3700.**Rwy 21**, climb heading 213° to assigned altitude. Eastbound - climb westbound to cross LNY VORTAC eastbound at or above 2700 and climb as cleared. Westbound - climb direct LNY VORTAC then via assigned route.

TAKEOFF OBSTACLE NOTES:

Rwy 3, multiple poles, trees, and terrain beginning 2108' from DER, 1011' left of centerline, up to 200' AGL/2202' MSL.**Rwy 21**, lighted windsock 8' from DER, 191' right of centerline, 30' AGL/1323' MSL.

TAKEOFF MINIMUMS, (OBSTACLE) DEPARTURE PROCEDURES, AND DIVERSE VECTOR AREA (RADAR VECTORS)

24025

PAC

TAKEOFF MINIMUMS, (OBSTACLE) DEPARTURE PROCEDURES, AND DIVERSE VECTOR AREA (RADAR VECTORS)

24025

LIHUE, HI

LIHUE (LIH) (PHLI)

TAKEOFF MINIMUMS AND (OBSTACLE) DEPARTURE PROCEDURES

AMDT 9 15JUN23 (23166) (FAA)

DEPARTURE PROCEDURE:

Use KAUAI DEPARTURE.

TAKEOFF OBSTACLE NOTES:

Rwy 3, NAVAID 85' from DER, 418' left of centerline, 8' AGL/85' MSL.

Trees beginning 221' from DER, 188' right of centerline, up to 35' AGL/88' MSL.

Trees beginning 240' from DER, 19' right of centerline, up to 43' AGL/95' MSL.

Trees beginning 250' from DER, 7' left of centerline, up to 34' AGL/93' MSL.

Trees beginning 395' from DER, 38' left of centerline, up to 34' AGL/94' MSL.

Trees beginning 415' from DER, 39' left of centerline, up to 39' AGL/95' MSL.

Trees beginning 431' from DER, 38' left of centerline, up to 34' AGL/103' MSL.

Trees beginning 473' from DER, 14' left of centerline, up to 50' AGL/107' MSL.

Tree 541' from DER, 4' right of centerline, 54' AGL/103' MSL.

Trees beginning 548' from DER, 8' right of centerline, up to 56' AGL/104' MSL.

Tree 972' from DER, 676' left of centerline, 68' AGL/115' MSL.

Tree 1563' from DER, 538' left of centerline, 90' AGL/127' MSL.

Tree 1750' from DER, 783' left of centerline, 120' AGL/165' MSL.

Rwy 17, light poles 4' from DER, 6' left of centerline, 2' AGL/94' MSL.

Tree 135' from DER, 272' right of centerline, 10' AGL/95' MSL.

Trees beginning 857' from DER, 565' right of centerline, up to 45' AGL/131' MSL.

Tree 1289' from DER, 734' right of centerline, 57' AGL/132' MSL.

Rwy 21, light poles 9' from DER, 54' left of centerline, 3' AGL/154' MSL.

Light poles 9' from DER, 55' right of centerline, 3' AGL/155' MSL.

Terrain 33' from DER, 457' right of centerline, 156' MSL.

Pole 192' from DER, 546' left of centerline, 44' AGL/183' MSL.

Pole 366' from DER, 550' left of centerline, 46' AGL/184' MSL.

Tree, pole beginning 497' from DER, 563' left of centerline, up to 70' AGL/206' MSL.

Trees beginning 1148' from DER, 231' right of centerline, up to 42' AGL/203' MSL.

Tree 1457' from DER, 185' right of centerline, 67' AGL/212' MSL.

Trees beginning 1466' from DER, 53' right of centerline, up to 77' AGL/230' MSL.

Trees beginning 1510' from DER, 62' right of centerline, up to 87' AGL/241' MSL.

Tree 1536' from DER, 3' left of centerline, 70' AGL/208' MSL.

Tree, pole beginning 1660' from DER, 9' right of centerline, up to 96' AGL/248' MSL.

Trees beginning 1903' from DER, 267' left of centerline, up to 68' AGL/217' MSL.

Tree 2017' from DER, 280' left of centerline, 70' AGL/218' MSL.

Trees beginning 2029' from DER, 296' left of centerline, up to 73' AGL/221' MSL.

Trees beginning 2212' from DER, 337' left of centerline, up to 82' AGL/227' MSL.

Tree 3102' from DER, 442' left of centerline, 107' AGL/231' MSL.

Trees beginning 2.1 NM from DER, 2126' left of centerline, up to 3' AGL/896' MSL.

Tree 2.2 NM from DER, 2973' left of centerline, 25' AGL/947' MSL.

Trees beginning 2.2 NM from DER, 2747' left of centerline, up to 212' AGL/1329' MSL.

Tree 2.3 NM from DER, 3671' left of centerline, 2' AGL/1474' MSL.

Tree 2.4 NM from DER, 4032' left of centerline, 100' AGL/1488' MSL.

Trees beginning 2.4 NM from DER, 2595' left of centerline, up to 100' AGL/1488' MSL.

Trees beginning 2.5 NM from DER, 3483' left of centerline, up to 23' AGL/1294' MSL.

Rwy 35, fence 40' from DER, 308' right of centerline, 13' AGL/94' MSL.

Tree 106' from DER, 435' right of centerline, 19' AGL/100' MSL.

Trees beginning 203' from DER, 379' right of centerline, up to 51' AGL/131' MSL.

DIVERSE VECTOR AREA (RADAR VECTORS)

AMDT 1 15OCT15 (15288) (FAA)

Rwys 3, 17, heading as assigned by ATC.

Rwy 21, heading as assigned by ATC; requires min. climb of 400' per NM to 4500.

Rwy 35, heading as assigned by ATC; requires min. climb of 230' per NM to 700.

MAJURO ATOLL, MH

AMATA KABUA INTL (MAJ) (PKMJ)

TAKEOFF MINIMUMS AND (OBSTACLE) DEPARTURE PROCEDURES

ORIG 08APR10 (21224) (FAA)

TAKEOFF OBSTACLE NOTES:

Rwy 7, antenna on building 215' from DER, 446' left of centerline, 48' AGL/54' MSL.

Obstruction light on AMOM 44' from DER, 269' left of centerline, 33' AGL/39' MSL.

Obstruction light on WSK 10' from DER, 245' right of centerline, 23' AGL/29' MSL.

Tree 934' from DER, 243' left of centerline, 39' AGL/45' MSL.

Bush 555' from DER, 187' right of centerline, 17' AGL/23' MSL.

Rwy 25, obstruction light on WSK 11' from DER, 246' left of centerline, 23' AGL/29' MSL.

Post 51' from DER, 252' right of centerline, 8' AGL/14' MSL.

Tree 996' from DER, 39' left of centerline, 31' AGL/37' MSL.

Tree 563' from DER, 5' right of centerline, 20' AGL/26' MSL.

Bushes beginning 207' from DER, from 124' left to 207' right of centerline, up to 14' AGL/20' MSL.

Vehicle on roadway 130' from DER, 241' right of centerline, 15' AGL/20' MSL.

TAKEOFF MINIMUMS, (OBSTACLE) DEPARTURE PROCEDURES, AND DIVERSE VECTOR AREA (RADAR VECTORS)

24025

TAKEOFF MINIMUMS, (OBSTACLE) DEPARTURE PROCEDURES, AND DIVERSE VECTOR AREA (RADAR VECTORS)

24025

PAGO PAGO, AS

PAGO PAGO INTL (PPG) (NSTU)

TAKEOFF MINIMUMS AND (OBSTACLE) DEPARTURE PROCEDURES

ORIG-A 12MAR09 (09071) (FAA)

TAKEOFF MINIMUMS:

Rwy 23, std. w/ min. climb of 320' per NM to 800, or 2700-3 for climb in visual conditions.

Rwy 26, NA-obstacles.

DEPARTURE PROCEDURE:

Rwys 5, 8, climbing right turn southbound between TUT R-090 clockwise to R-180 to 2800, then proceed on course.

Rwy 23, climbing left turn heading 150° southbound between TUT R-090 clockwise to R-180 to 2800, then proceed on course. For climb in visual conditions: cross Pago Pago Intl airport at or above 2600 before proceeding on course.

TAKEOFF OBSTACLE NOTES:

Rwy 5, bush 1' from DER, 237' right of centerline, 3' AGL/12' MSL.

Bush 379' from DER, 362' left of centerline, 14' AGL/23' MSL.

Ship 998' from DER, 57' right of centerline, 150' AGL/150' MSL.

Rwy 8, bush 689' from DER, 360' left of centerline, 15' AGL/23' MSL.

Ship 1435' from DER, 304' left of centerline, 150' AGL/150' MSL.

Rwy 23, multiple trees beginning 352' from DER, 173' left of centerline, up to 20' AGL/132' MSL.

Multiple trees beginning 881' from DER, 296' right of centerline, up to 20' AGL/172' MSL.

Multiple trees and poles beginning 1.6 NM from DER, 38' right of centerline, up to 367' AGL/554' MSL.

Tree 2.3 NM from DER, 2126' left of centerline, 20' AGL/387' MSL.

POHNPEI ISLAND, FM

POHNPEI INTL (PNI) (PTPN)

TAKEOFF MINIMUMS AND (OBSTACLE) DEPARTURE PROCEDURES

AMDT 3 27APR17 (17117) (FAA)

TAKEOFF MINIMUMS:

Rwy 27, 300-1½ or std. w/min. climb of 215' per NM to 300, or alternatively, with standard takeoff minimums and a normal 200'/NM climb gradient, takeoff must occur no later than 1400' prior to DER.

DEPARTURE PROCEDURE:

Rwy 9, Climb on a heading between 264° CW 083° from DER to 2600 before proceeding on course.

Rwy 27, Climb on a heading between 264° CW 083° from DER to 2600 before proceeding on course.

TAKEOFF OBSTACLE NOTES:

Rwy 27, fence 92' from DER, left to right of centerline, up to 9' AGL/15' MSL.

Tree 1.2 NM from DER, 1175' left of centerline, 62' AGL/203' MSL.

CAUTION: **Rwy 27**, ships with maximum height of 150' MSL may traverse Pohnpei channel 400' off DER, closing airport at times.

ROTA ISLAND, CQ

BENJAMIN TAISACAN MANGLONA INTL (GRO) (PGRO)

TAKEOFF MINIMUMS AND (OBSTACLE) DEPARTURE PROCEDURES

AMDT 2 06FEB14 (14037) (FAA)

DEPARTURE PROCEDURE:

Rwy 9, climb heading 090° to 1400 before turning.

Rwy 27, climb heading 270° to 2200 before turning southbound.

TAKEOFF OBSTACLE NOTES:

Rwy 9, tree 514' from DER, 418' left of centerline, up to 30' AGL/638' MSL.

Rwy 27, tree 1203' from DER, 581' left of centerline, up to 30' AGL/618' MSL.

SAIPAN ISLAND, CQ

FRANCISCO C ADA/SAIPAN INTL (GSN) (PGSN)

TAKEOFF MINIMUMS AND (OBSTACLE) DEPARTURE PROCEDURES

ORIG-A 12MAR09 (09071) (FAA)

DEPARTURE PROCEDURE:

Rwys 7, 25, climb on runway heading to 1600 before climbing on course.

TINIAN ISLAND, CQ

FRANCISCO MANGLONA BORJA/TINIAN INTL (TNI) (PGWT)

TAKEOFF MINIMUMS AND (OBSTACLE) DEPARTURE PROCEDURES

AMDT 1 27AUG09 (23222) (FAA)

TAKEOFF OBSTACLE NOTES:

Rwy 8, trees beginning 694' from DER, 507' left of centerline, up to 100' AGL/363' MSL.

Multiple trees beginning 569' from DER, 471' right of centerline, up to 100' AGL/389' MSL.

Rwy 26, multiple trees beginning 743' from DER, 508' right of centerline, up to 100' AGL/363' MSL.

25 JAN 2024 to 21 MAR 2024

25 JAN 2024 to 21 MAR 2024

TAKEOFF MINIMUMS, (OBSTACLE) DEPARTURE PROCEDURES, AND DIVERSE VECTOR AREA (RADAR VECTORS)

24025

PAC

TAKEOFF MINIMUMS, (OBSTACLE) DEPARTURE PROCEDURES, AND DIVERSE VECTOR AREA (RADAR VECTORS)

24025

WAKE ISLAND AFLD (AWK) (PWAK)

WAKE ISLAND, QW

TAKEOFF MINIMUMS AND (OBSTACLE) DEPARTURE PROCEDURES

AMDT 1 (19227)

TAKEOFF OBSTACLE NOTES:

Rwy 10, terrain 0' from DER, 500' left of centerline, 23' MSL.

Terrain 48' from DER, 110' left of centerline, 23' MSL.

Bunker 819' from DER, 370' right of centerline, 12' AGL/40' MSL.

Bunker 377' from DER, 497' left of centerline, 15' AGL/41' MSL.

Bush 383' from DER, 483' left of centerline, 7' AGL/45' MSL.

Bush 813' from DER, 367' right of centerline, 6' AGL/40' MSL.

Rwy 28, terrain 0' inward of DER, 484' right of centerline, 25' MSL.

Terrain 75' from DER, 510' right of centerline, 26' MSL.

WENO ISLAND, FM

CHUUK INTL (TKK) (PTKK)

TAKEOFF MINIMUMS AND (OBSTACLE) DEPARTURE PROCEDURES

AMDT 2 11FEB10 (10042) (FAA)

DEPARTURE PROCEDURE:

Rwy 4, climb heading 041° to 1100 before proceeding on course.**Rwy 22**, climb heading 221° to 1500 before proceeding on course.

TAKEOFF OBSTACLE NOTES:

Rwy 4, bush 205' from DER, 203' right of centerline, 7' AGL/17' MSL.**Rwy 22**, bush 5' from DER, 241' right of centerline, 14' AGL/24' MSL.

Bush 221' from DER, 85' right of centerline, 7' AGL/17' MSL.

CAUTION: Ships with superstructure to 150' traverse channels west of runway 4/22.

WHEELER AAF (HHI) (PHHI)

WAHIAWA, HI

TAKEOFF MINIMUMS AND (OBSTACLE) DEPARTURE PROCEDURES

AMDT 7 07SEP23 (23250) (USA)

TAKEOFF MINIMUMS:

Rwy 6, 300-1 w/min climb of 357'/NM to 3600 or std w/min climb of 473'/NM to 2900.**Rwy 24**, NA-Obstacles.

DEPARTURE PROCEDURE:

Rwy 6, climbing right turn to hdg 150° to intercept CKH VORTAC R-294 to CKH VORTAC.

TAKEOFF OBSTACLE NOTES:

Rwy 6, pylon 5417' from DER, 33' right of centerline, 90' AGL/979' MSL.

Pylon 3192' from DER, 858' left of centerline, 100' AGL/972' MSL.

Pylon 3182' from DER, 845' left of centerline, 100' AGL/972' MSL.

Pylon 4800' from DER, 113' left of centerline, 90' AGL/966' MSL.

Pylon 3954' from DER, 644' left of centerline, 100' AGL/962' MSL.

Pylon 3612' from DER, 357' left of centerline, 90' AGL/959' MSL.

Pylon 2802' from DER, 512' left of centerline, 90' AGL/956' MSL.

YAP ISLAND, FM

YAP INTL (T11) (PTYA)

TAKEOFF MINIMUMS AND (OBSTACLE) DEPARTURE PROCEDURES

AMDT 2 08DEC94 (94342) (FAA)

DEPARTURE PROCEDURE:

Rwy 7, climbing right turn to 1500 via 090° bearing from YP NDB/DME, then climb on course.**Rwy 25**, climb to 500, then climb on course.

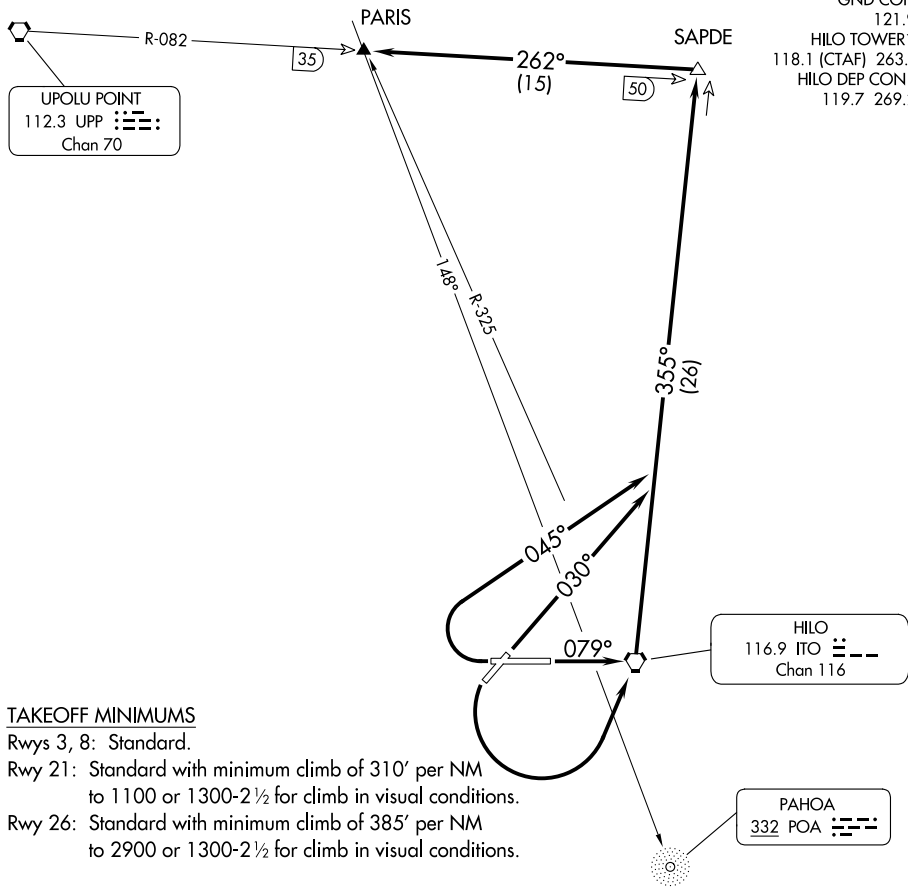
25 JAN 2024 to 21 MAR 2024

25 JAN 2024 to 21 MAR 2024

TAKEOFF MINIMUMS, (OBSTACLE) DEPARTURE PROCEDURES, AND DIVERSE VECTOR AREA (RADAR VECTORS)

24025

PAC



TAKEOFF MINIMUMS

Rwys 3, 8: Standard.

Rwy 21: Standard with minimum climb of 310' per NM to 1100 or 1300-2½ for climb in visual conditions.

Rwy 26: Standard with minimum climb of 385' per NM to 2900 or 1300-2½ for climb in visual conditions.

(CONTINUED ON FOLLOWING PAGE)

NOTE: Chart not to scale.

DEPARTURE ROUTE DESCRIPTION

TAKEOFF RUNWAY 3: Climb heading 030° and ITO R-355 to SAPDE INT, thence. . . .

TAKEOFF RUNWAY 8: Climb heading 079° to ITO VORTAC and ITO R-355 to SAPDE INT, thence. . . .

TAKEOFF RUNWAY 21: Climbing left turn direct ITO VORTAC and ITO R-355 to SAPDE INT, or climb in visual conditions to cross ITO VORTAC northbound at or above 1200 MSL, then via R-355 to SAPDE INT, thence. . . .

TAKEOFF RUNWAY 26: Climbing right turn via heading 045° and ITO R-355 to SAPDE INT, or climb in visual conditions to cross ITO VORTAC northbound at or above 1200 MSL, then via R-355 to SAPDE INT, thence. . . .

. . . .proceed via UPP R-082 to PARIS INT.

TAKEOFF OBSTACLE NOTES

- Rwy 3: Numerous trees and WSK beginning 395' from DER, 68' left of centerline, up to 86' AGL/115' MSL.
Numerous trees beginning 325' from DER, 137' right of centerline, up to 66' AGL/95' MSL.
- Rwy 8: Tree 1198' from DER, 480' left of centerline, 37' AGL/70' MSL.
Numerous trees beginning 414' from DER, 328' right of centerline, up to 46' AGL/79' MSL.
- Rwy 21: Numerous trees and poles beginning 1077' from DER, 272' left of centerline, up to 70' AGL/490' MSL.
Numerous trees and poles beginning 236' from DER, 43' right of centerline, up to 83' AGL/362' MSL.
Vehicles on road beginning 234' from DER, 260' left of centerline, 15' AGL/58' MSL.
- Rwy 26: Numerous vehicles beginning 6' from DER, 452' right of centerline, up to 15' AGL/39' MSL.
Numerous trees and light poles beginning 542' from DER, 471' left of centerline, up to 86' AGL/92' MSL.
Numerous trees beginning 1645' from DER, 266' right of centerline, up to 93' AGL/119' MSL.
Windsock 3' from DER, 269' right of centerline, 19' AGL/46' MSL.
RADAR reflector 373' from DER, 346' right of centerline, 10' AGL/37' MSL.

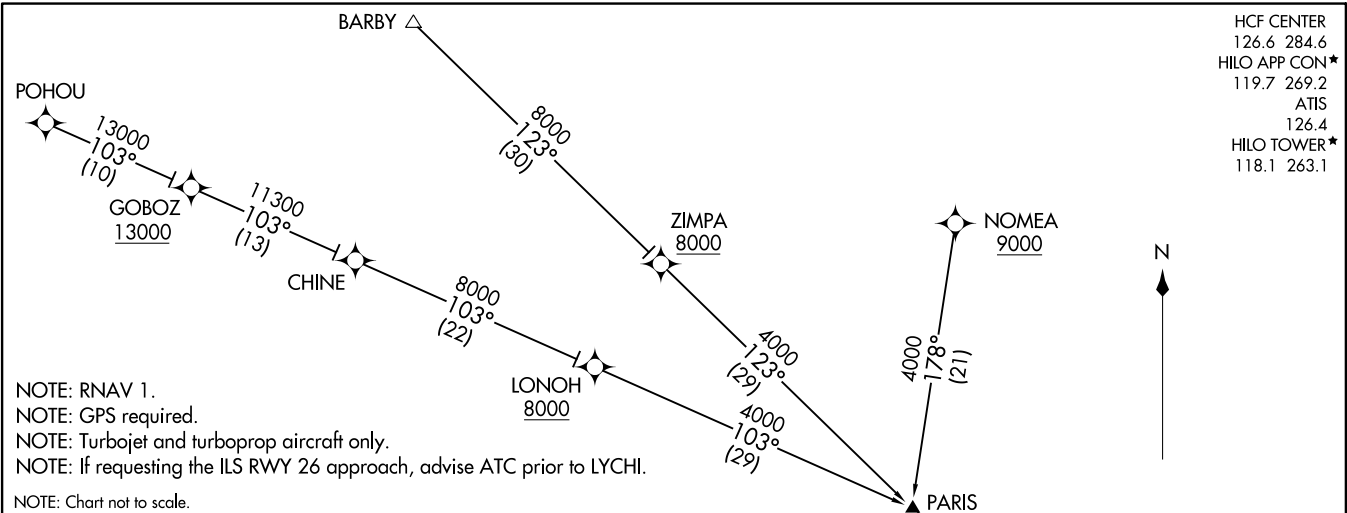
PAC: 25 JAN 2024 to 21 MAR 2024

PAC: 25 JAN 2024 to 21 MAR 2024

LYCHI ONE ARRIVAL (RNAV)
(PARIS.LYCHI1) 25FEB21

LYCHI ONE ARRIVAL (RNAV)
(PARIS.LYCHI1) 24025

HCF CENTER
126.6 284.6
HILO APP CON*
119.7 269.2
ATIS
126.4
HILO TOWER*
118.1 263.1



NOTE: RNAV 1.
 NOTE: GPS required.
 NOTE: Turbojet and turboprop aircraft only.
 NOTE: If requesting the ILS RWY 26 approach, advise ATC prior to LYCHI.
 NOTE: Chart not to scale.

ARRIVAL ROUTE DESCRIPTION

BARBY TRANSITION (BARBY.LYCHI1)

CHINE TRANSITION (CHINE.LYCHI1)

NOMEA TRANSITION (NOMEA.LYCHI1)

POHOU TRANSITION (POHOU.LYCHI1)

From PARIS on track 123° to cross LYCHI at or above 6000.

LANDING RUNWAY 21: From LYCHI on track 123° to cross KENNZ at or above 4000. Expect RNAV (GPS) RWY 21 or visual approach.

LANDING RUNWAY 26: From LYCHI on track 123° to cross KENNZ at or above 4000. Expect ILS or RNAV (GPS) RWY 26 approach.

AL-756 (FAA)

HILO INTL (ITO)(PHTO)
HILO, HAWAII

HILO INTL (ITO)(PHTO)
HILO, HAWAII