

TIN CITY, ALASKA

RNAV (GPS) RWY 34

21336

AL-2334 [USAF]

TIN CITY IRRS (PATC)

ARCH CRS
345°
Rwy Idg
TDZE 273
Aprt Elev 273

▼ Night operations not authorized
* Circling not authorized W of runway 16/34

MISSED APPROACH: Climb to 1500 then climbing right turn
to 4000 direct JAGMA and hold.

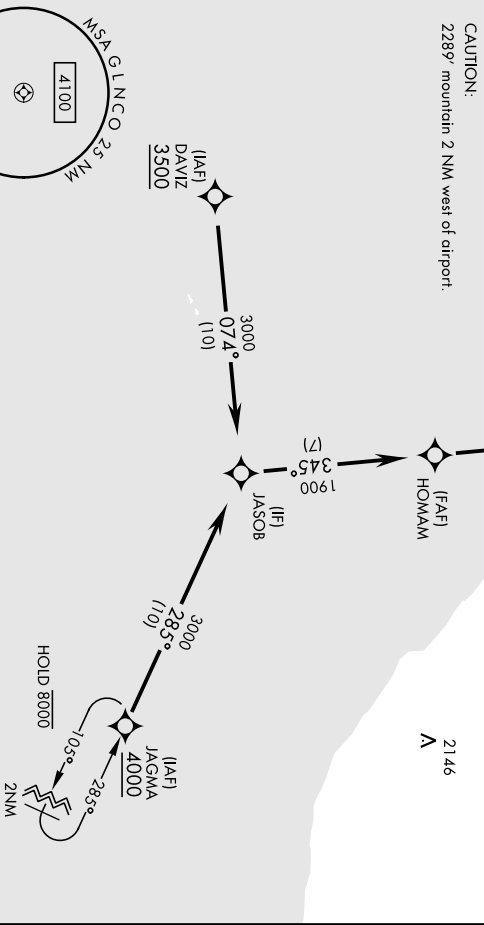
ANCHORAGE CENTER
133.3 290.4

TIN CITY COO (NOME RADIO)
122.6

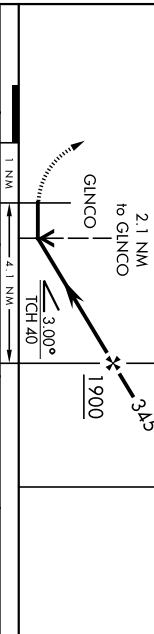
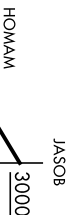
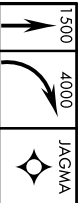
UNICOM
126.2 (CTAF)

Uncontrolled airspace below 700' AGL within 7 NM of Tin City airport.
Circling visibility reduction by helicopters NA.

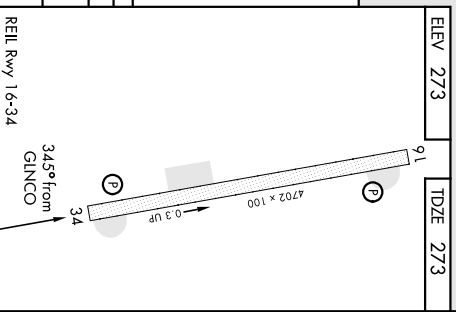
MILITARY CERTIFIED AIRCREW OR AUTHORIZED CONTRACT AIRCRAFT ONLY NOT FOR CIVIL USE



EMERG SAFE ALT 100 NM 7000



CATEGORY	A	B	C	D
LNAV MDA	1260-1 1/4 987 (1000-1 1/2)	1260-1 1/2 987 (1000-1 1/2)	1280-3 1007 (1100-3)	NA
CIRCLING*	1260-1 1/4 987 (1000-1 1/2)	1260-1 1/2 987 (1000-1 1/2)	1280-3 1007 (1100-3)	NA



TIN CITY, ALASKA

65° 34' N-167° 55' W

TIN CITY IRRS (PATC)

Arr'd 2 02DEC21

RNAV (GPS) RWY 34

TERPS