

(MANGM1.SIT) 23334

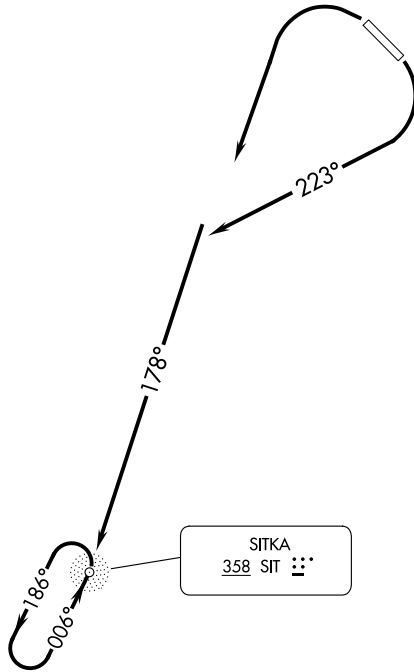
MANGM ONE DEPARTURE

AL-5414 (FAA)

SITKA ROCKY GUTIERREZ (SIT) (PASI)
SITKA, ALASKA

AFIS
135.9
ANCHORAGE CENTER
126.1 335.5
SITKA RADIO
123.6 (CTAF) 122.2

**TOP ALTITUDE:
ASSIGNED BY ATC**



AK, 25 JAN 2024 to 21 MAR 2024

AK, 25 JAN 2024 to 21 MAR 2024

WARNING: High terrain all quadrants, Mount Edgecumbe 3201' MSL,
13 NM southwest of Sitka Airport.

TAKEOFF MINIMUMS

Rwy 11: Standard with the following minimum climb requirements: 180K or less, 410' per NM to 1900;
more than 180K, 645' per NM to 3400.

Rwy 29: Standard with minimum climb of 233' per NM to 1000.

NOTE: Chart not to scale.



DEPARTURE ROUTE DESCRIPTION

TAKEOFF RUNWAY 11: Climbing right turn heading 223° to intercept SIT NDB 178° course to SIT NDB thence. . . .

TAKEOFF RUNWAY 29: Climbing left turn direct SIT NDB thence. . . .

. . . continue climb in SIT NDB holding pattern to cross SIT NDB at or above MEA for direction of flight before proceeding on course, maintain ATC assigned altitude.

MANGM ONE DEPARTURE
(MANGM1.SIT) 01FEB18

SITKA, ALASKA
SITKA ROCKY GUTIERREZ (SIT) (PASI)

(STKA9.SSR) 23334

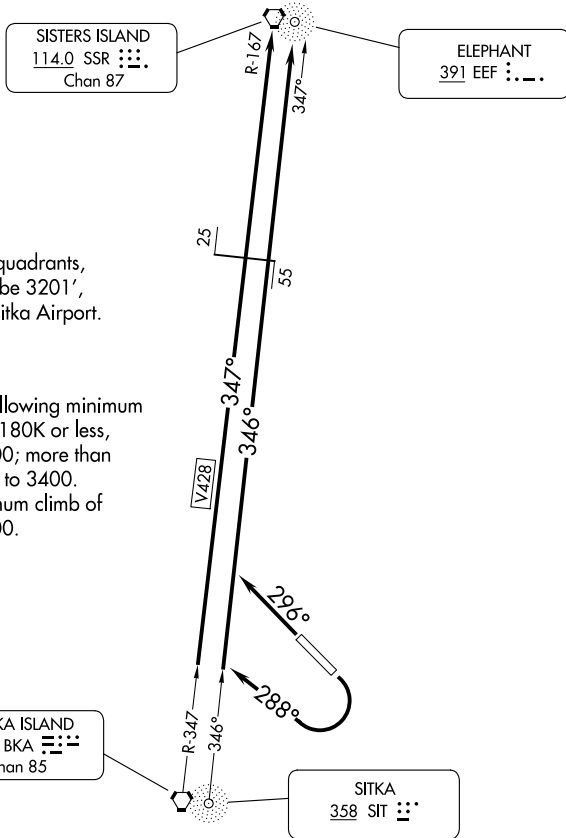
SITKA NINE DEPARTURE

AL-5414 (FAA)

SITKA ROCKY GUTIERREZ (SIT) (PASI)

SITKA, ALASKA

AFIS
135.9
ANCHORAGE CENTER
126.1 335.5
SITKA RADIO
123.6 (CTAF) 122.2
UNICOM
122.95



WARNING: High terrain all quadrants,
Mount Edgecumbe 3201',
13 NM SW of Sitka Airport.

TAKEOFF MINIMUMS

- Rwy 11: Standard with the following minimum climb requirements: 180K or less, 390' per NM to 4500; more than 180K, 645' per NM to 3400.
- Rwy 29: Standard with minimum climb of 357' per NM to 5400.

NOTE: Chart not to scale.

DEPARTURE ROUTE DESCRIPTION

TAKEOFF RUNWAY 11: Climbing right turn heading 288° to join V428 and SSR R-167 to SSR VORTAC or on SIT 346° bearing and EEF 347° course to EEF NDB.

TAKEOFF RUNWAY 29: Climb heading 296° to join V428 to SSR VORTAC or SIT NDB 346° bearing and EEF 347° course to EEF NDB.

SITKA NINE DEPARTURE

(STKA9.SSR) 13NOV14

SITKA, ALASKA
SITKA ROCKY GUTIERREZ (SIT) (PASI)

AK, 25 JAN 2024 to 21 MAR 2024

AK, 25 JAN 2024 to 21 MAR 2024