

APP CRS	Rwy Idg	4400
230°	TDZE	58
	Apt Elev	59

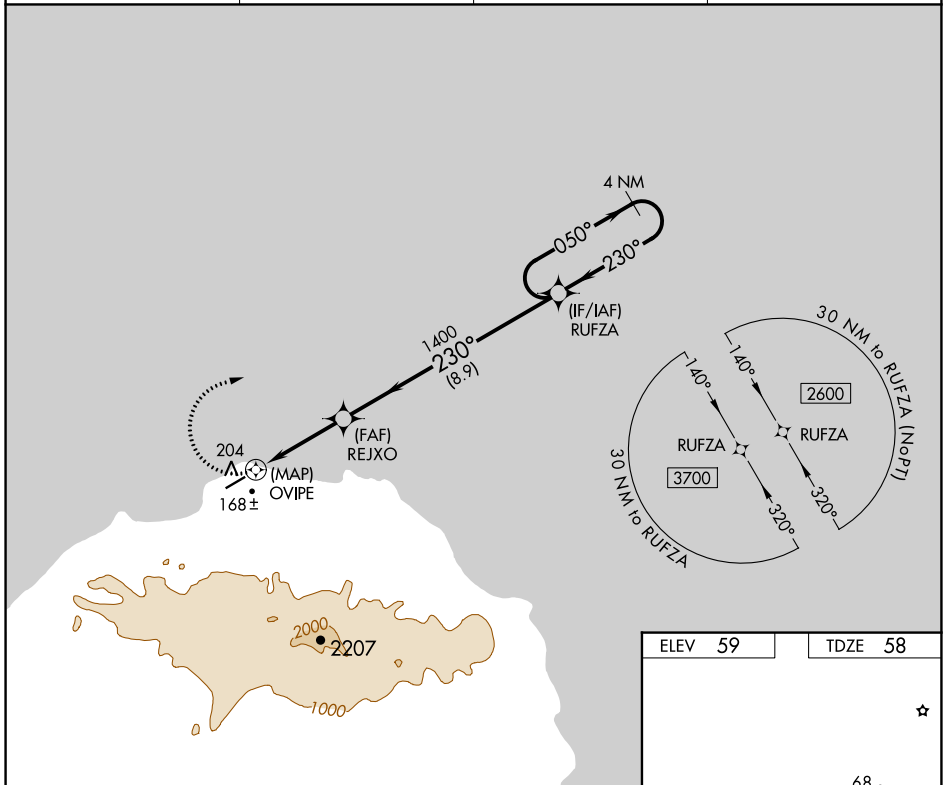
RNAV (GPS) RWY 23

SAVOONGA (SVA) (PASA)

⚠ DME/DME RNP-0.3 NA. When local altimeter setting not received, use Gambell altimeter setting and increase all MDAs 100 feet; increase LNAV Cat C/D visibility ¼ SM and Circling Cat C visibility ½ SM. Circling NA southeast of Rwy 5-23. VDP NA with Gambell altimeter setting.

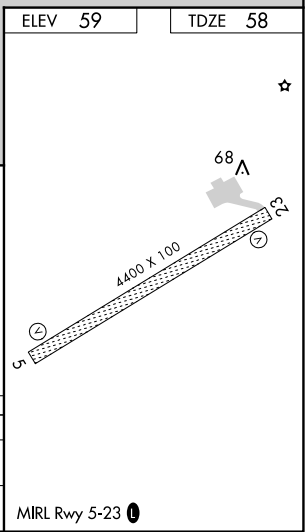
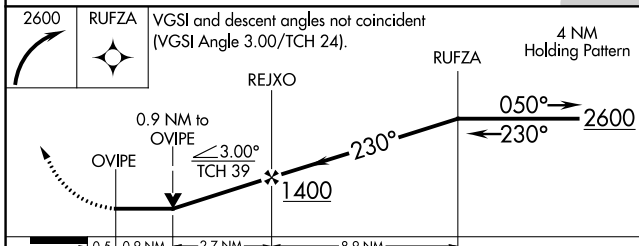
⚠ MISSED APPROACH: Climbing right turn to 2600 direct RUFZA and hold.

AWOS-3P 121.3	ANCHORAGE CENTER 132.2 281.4	NOME RADIO 122.3	CTAF 122.7 ⓪
-------------------------	--	----------------------------	-------------------------------



AK, 25 JAN 2024 to 21 MAR 2024

AK, 25 JAN 2024 to 21 MAR 2024



CATEGORY	A	B	C	D
LNAV MDA	520-1 462 (500-1)		520-1⅓ 462 (500-1⅓)	
CIRCLING	520-1 461 (500-1)		780-2 721 (800-2)	1160-3 1101 (1200-3)

APP CRS	Rwy Idg	4400
069°	TDZE	59
	Apt Elev	59

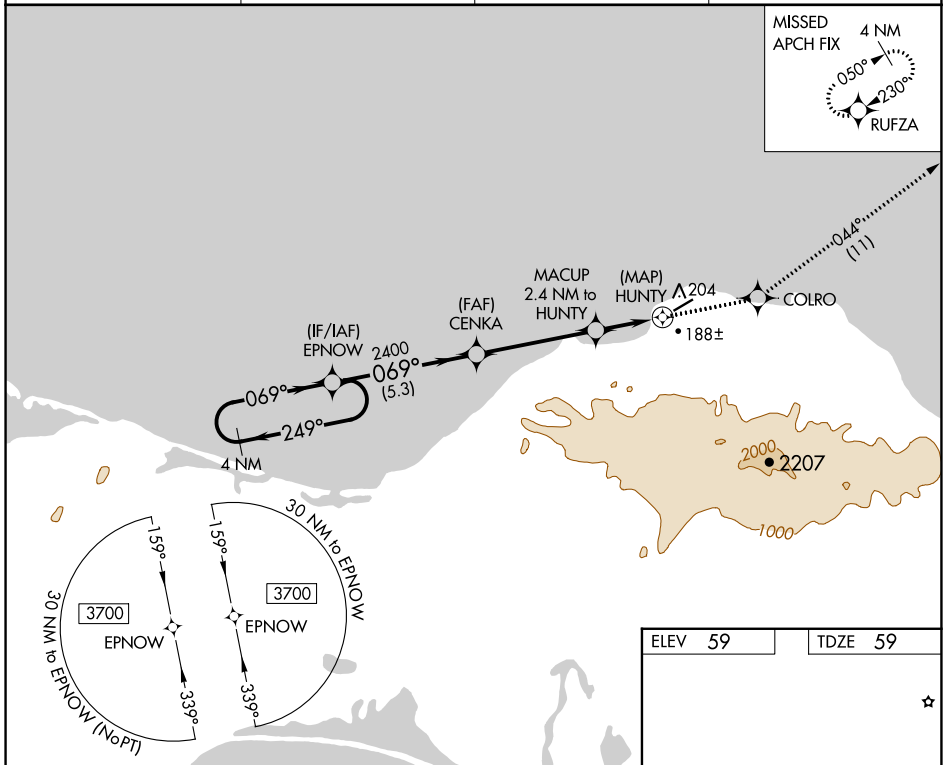
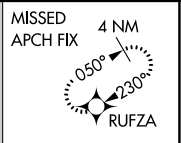
RNAV (GPS) RWY 5

SAVOONGA (SVA) (PASA)

⚠ Circling NA southeast of Rwy 5-23. DME/DME RNP-0.3 NA. When local altimeter setting not received, use Gambell altimeter setting and increase all MDAs 100 feet; increase LNAV Cat C/D visibility $\frac{3}{8}$ SM and Circling Cat C visibility $\frac{1}{2}$ SM. VDP NA with Gambell altimeter setting.

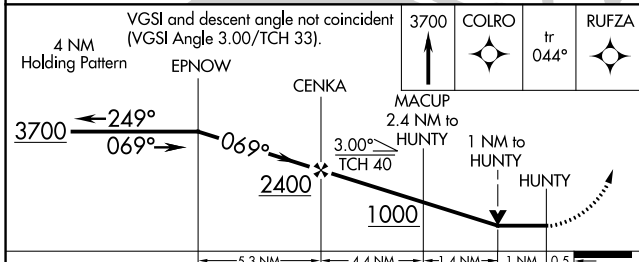
MISSED APPROACH: Climb to 3700 direct COLRO and on track 044° to RUFZA and hold, continue climb-in-hold to 3700.

AWOS-3P 121.3	ANCHORAGE CENTER 132.2 281.4	NOME RADIO 122.3	CTAF 122.7
-------------------------	--	----------------------------	----------------------

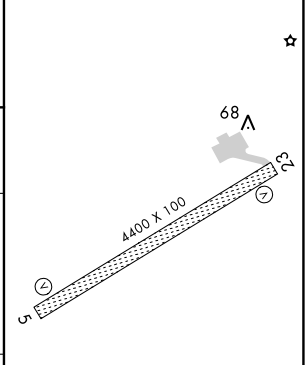


AK, 25 JAN 2024 to 21 MAR 2024

AK, 25 JAN 2024 to 21 MAR 2024



ELEV 59	TDZE 59
---------	---------



CATEGORY	A	B	C	D
LNAV MDA	560-1 501 (600-1)		560-1 $\frac{3}{8}$ 501 (600-1 $\frac{3}{8}$)	
CIRCLING	560-1 501 (600-1)		780-2 721 (800-2)	1160-3 1101 (1200-3)

MIRL Rwy 5-23

VOR/DME ULL 117.3 Chan 120	APP CRS 229°	Rwy Idg 4400 TDZE 58 Apt Elev 59
--	------------------------	---

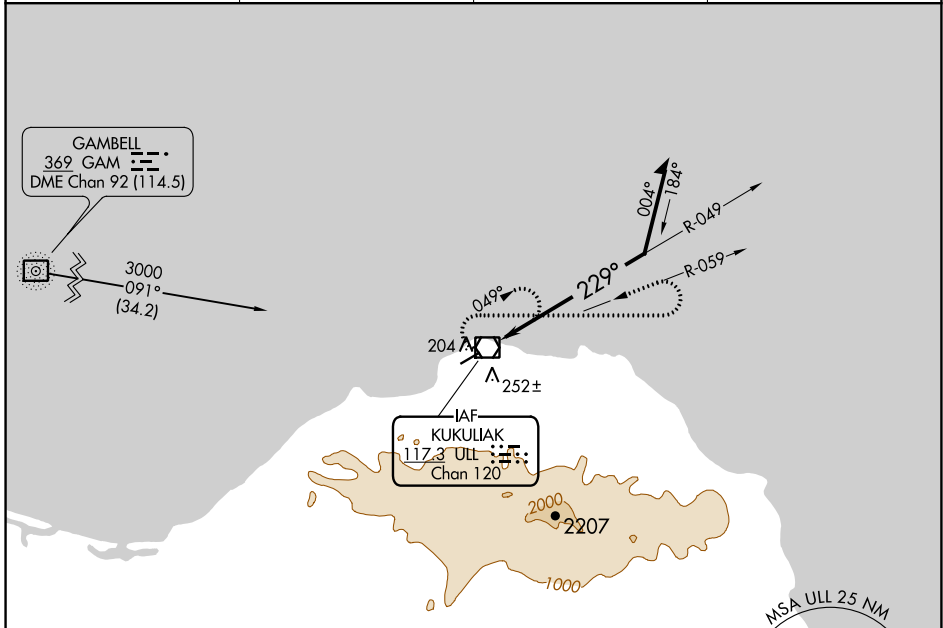
VOR RWY 23

SAVOONGA (SVA) (PASA)

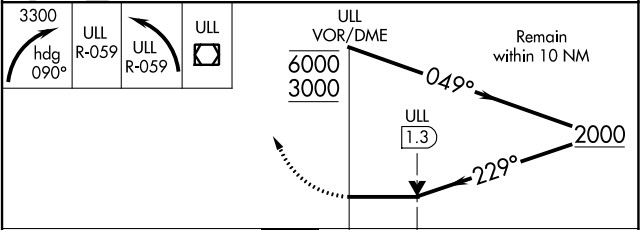
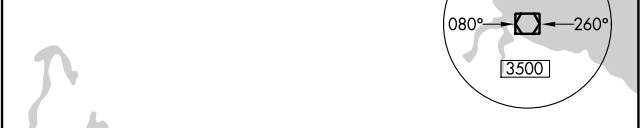
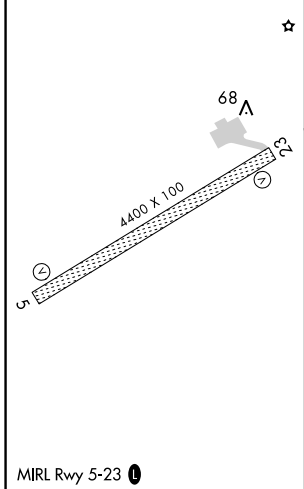
⚠ Circling NA southeast of Rwy 5-23. When local altimeter setting not received, use Gambell altimeter setting and increase all MDAs 100 feet; increase S-23 Cat C/D visibility ¼ SM and Circling Cat C visibility ½ SM. VDP NA with Gambell altimeter setting.

⚠ MISSED APPROACH: Climbing right turn to 3300 via heading 090° and ULL VOR/DME R-059 then left turn via ULL VOR/DME R-059 to ULL VOR/DME and hold.

AWOS-3P 121.3	ANCHORAGE CENTER 132.2 281.4	NOME RADIO 122.3	CTAF 122.7 Ⓛ
-------------------------	--	----------------------------	-------------------------------



ELEV 59	TDZE 58
----------------	----------------



CATEGORY	A	B	C	D
S-23	660-1	602 (700-1)	660-1¾ 602 (700-1¾)	660-2 602 (700-2)
CIRCLING	660-1	601 (700-1)	780-2 721 (800-2)	1160-3 1101 (1200-3)

AK, 25 JAN 2024 to 21 MAR 2024

AK, 25 JAN 2024 to 21 MAR 2024

VOR/DME ULL 117.3 Chan 120	APP CRS 229°	Rwy Idg 4400 TDZE 58 Apt Elev 59
--	------------------------	---

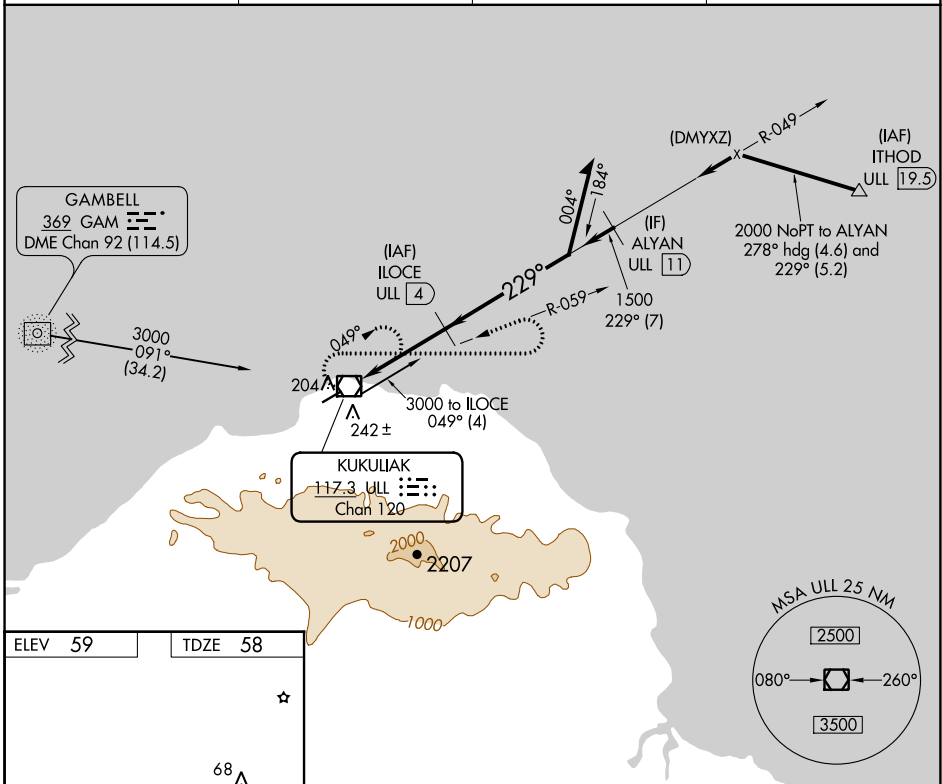
VOR/DME RWY 23

SAVOONGA (SVA) (PASA)

⚠ Circling NA southeast of Rwy 5-23. When local altimeter setting not received, use Gambell altimeter setting and increase all MDAs 100 feet; increase S-23 Cat C/D visibility ¼ SM and Circling Cat C visibility ½ SM. VDP NA with Gambell altimeter setting.

MISSED APPROACH: Climbing right turn to 3300 via heading 090° and via ULL VOR/DME R-059 then left turn via ULL VOR/DME R-059 to ULL VOR/DME and hold.

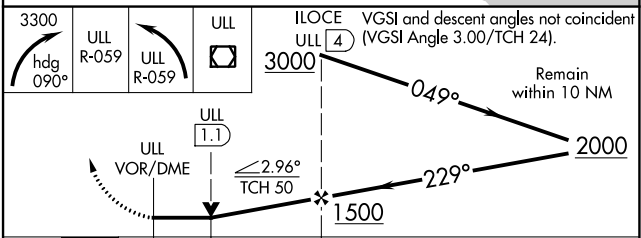
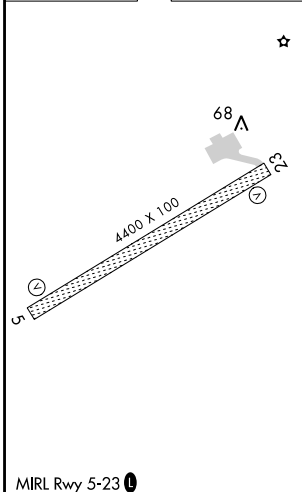
AWOS-3P 121.3	ANCHORAGE CENTER 132.2 281.4	NOME RADIO 122.3	CTAF 122.7
-------------------------	--	----------------------------	----------------------



AK, 25 JAN 2024 to 21 MAR 2024

AK, 25 JAN 2024 to 21 MAR 2024

ELEV 59	TDZE 58
---------	---------



CATEGORY	A	B	C	D
S-23	600-1 542 (600-1)	600-1½ 542 (600-1½)	600-1¾ 542 (600-1¾)	600-1¾ 542 (600-1¾)
CIRCLING	600-1 541 (600-1)	780-2 721 (800-2)	1160-3 1101 (1200-3)	