

(IPOXE2.IPOXE) 18312

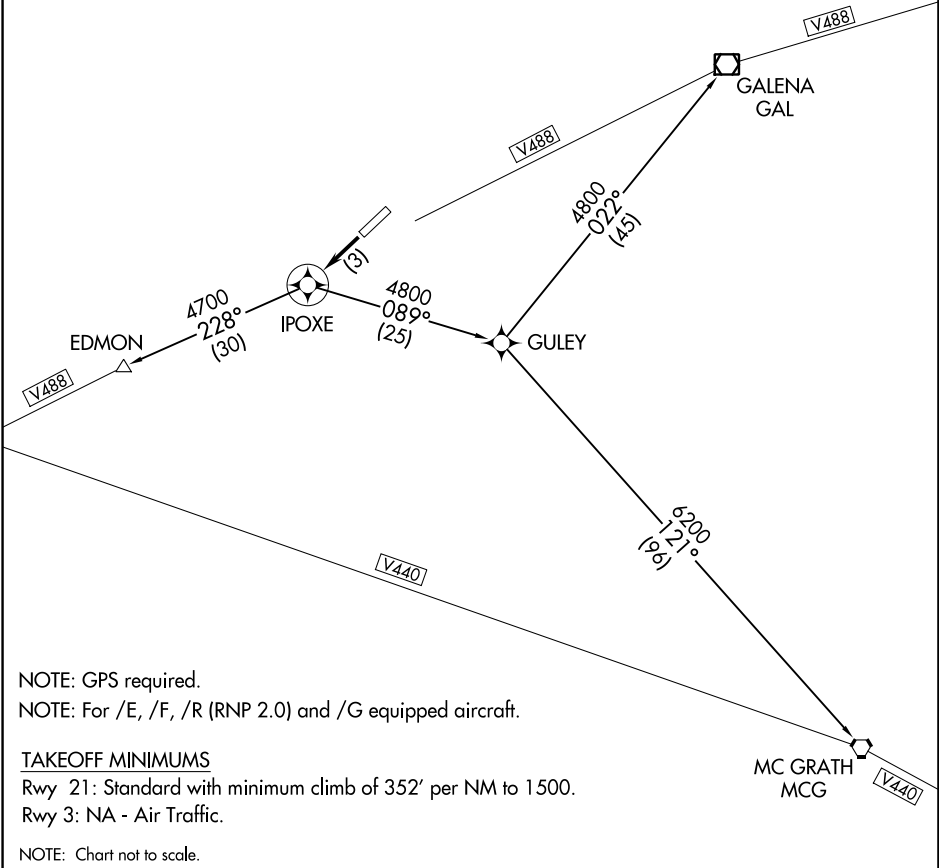
IPOXE TWO DEPARTURE (RNAV)

AL-10158 (FAA)

KALTAG (KAL) (PAKV)
KALTAG, ALASKA

ANCHORAGE CENTER
127.0 290.2

**TOP ALTITUDE:
ASSIGNED BY ATC**



AK, 25 JAN 2024 to 21 MAR 2024

AK, 25 JAN 2024 to 21 MAR 2024

DEPARTURE ROUTE DESCRIPTION

TAKEOFF RUNWAY 21: Climb direct IPOXE WP, thence . . .
. . . via assigned (transition), maintain 5500'.

EDMON TRANSITION (IPOXE2.EDMON)
GALENA TRANSITION (IPOXE2.GAL)
MC GRATH TRANSITION (IPOXE2.MCG)

IPOXE TWO DEPARTURE (RNAV)
(IPOXE2.IPOXE) 21JUL16

KALTAG, ALASKA
KALTAG (KAL) (PAKV)

KACLE TWO DEPARTURE (RNAV)
(KACLE2.KACLE) 21JUL16

KAITAG, ALASKA
KAITAG (KAI) (PAKV)

DEPARTURE ROUTE DESCRIPTION

TAKEOFF RUNWAY 3: Climb direct KACLE WP, thence. . . .
. . . .via assigned (transition), maintain 5500.


EDMON TRANSITION (KACLE2.EDMON)

VENCE TRANSITION (KACLE2.VENCE)

YUCON TRANSITION (KACLE2.YUCON)

ANCHORAGE CENTER
127.0 290.2

**TOP ALTITUDE:
ASSIGNED BY ATC**

GALENA
GAL  V488

(KACLE2.KACLE) 18312
KACLE TWO DEPARTURE (RNAV)

AL-10158 (FAA)

KAITAG (KAI) (PAKV)
KAITAG, ALASKA

