

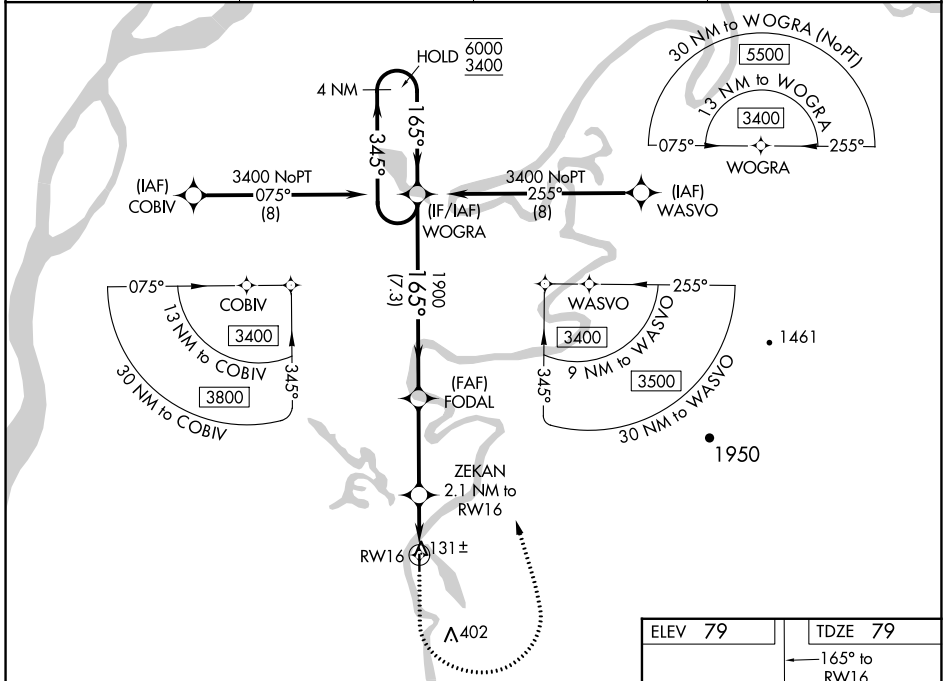
WAAS CH 45610 W16A	APP CRS 165°	Rwy ldg TDZE 79 Apt Elev 79
---------------------------------	------------------------	---

RNAV (GPS) RWY 16

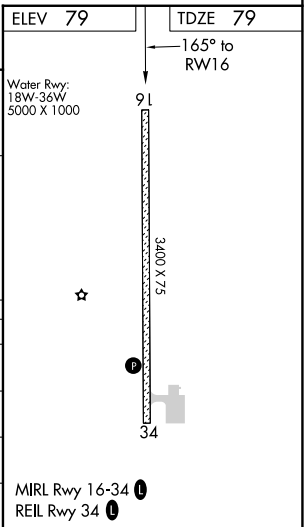
SHAGELUK (SHX) (PAHX)

RNP APCH. ▼ For uncompensated Baro-VNAV systems, LNAV/VNAV NA below -25°C or above 54°C. ▲ Circling NA for Cats C and D east of Rwy 16-34.	MISSED APPROACH: Climb to 1000 then climbing left turn to 3400 direct WOGRA and hold.
--	---

AWOS-3P 121.575	ANCHORAGE CENTER 135.7 335.5	KENAI RADIO 122.4	UNICOM 122.8 (CTAF)
---------------------------	--	-----------------------------	-------------------------------



4 NM Holding Pattern 6000 ← 345° 3400 → 165° GP 3.00° TCH 40	WOGRA		FODAL	ZEKAN	WOGRA
	1900 165° 1900		1900	2.1 NM to RW16	* LNAV only
7.3 NM		3.5 NM		0.7	1.4 NM
CATEGORY	A	B	C	D	
LPV DA		329-1	250 (300-1)		
LNAV/VNAV DA		329-1	250 (300-1)		
LNAV MDA		400-1	321 (400-1)		
CIRCLING	460-1 381 (400-1)	540-1 461 (500-1)	540-1½ 461 (500-1½)	800-2¼ 721 (800-2¼)	



AK, 03 NOV 2022 to 29 DEC 2022

AK, 03 NOV 2022 to 29 DEC 2022

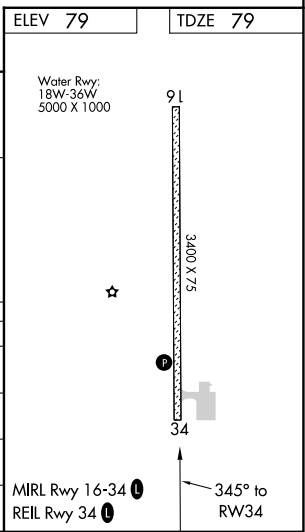
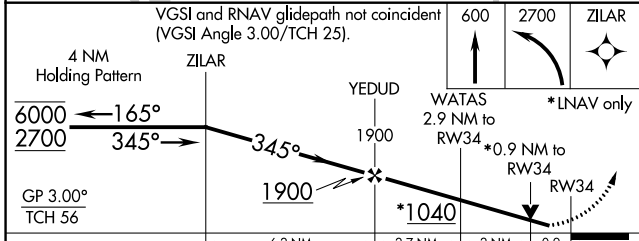
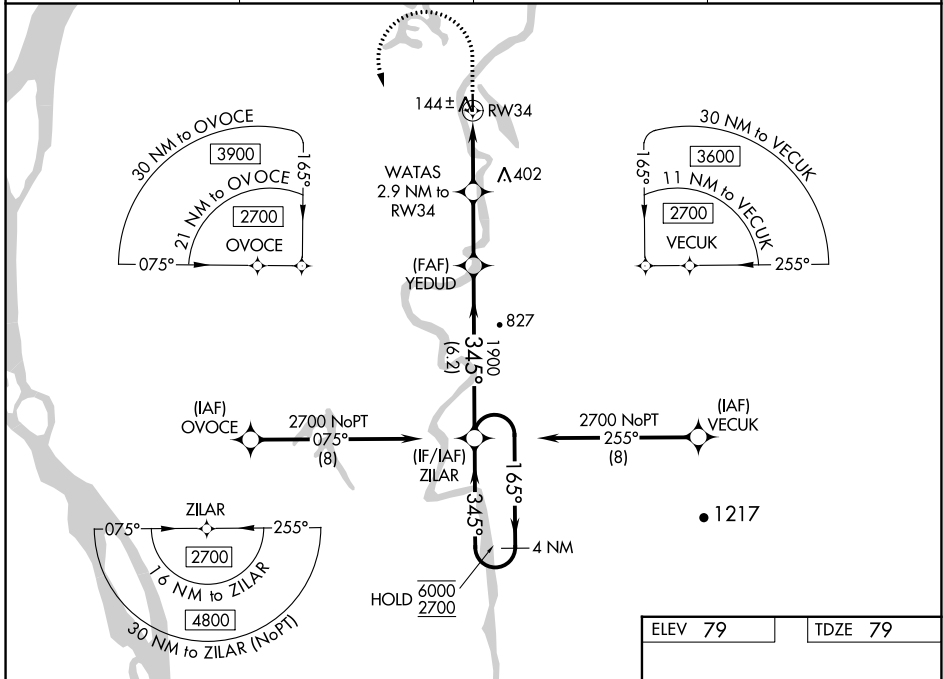
WAAS CH 72643 W34A	APP CRS 345°	Rwy ldg TDZE 79 Apt Elev 79	3400
--	------------------------	---	-------------

RNAV (GPS) RWY 34

SHAGELUK (SHX) (PAHX)

RNP APCH.	MISSED APPROACH: Climb to 600 then climbing left turn to 2700 direct ZILAR and hold.
<p>▼ Rwy 34 helicopter visibility reduction below 3/4 SM NA. For uncompensated Baro-VNAV systems, LNAV/VNAV NA below -18°C or above 54°C. Circling NA for Cats C and D east of Rwy 16-34.</p>	

AWOS-3P 121.575	ANCHORAGE CENTER 135.7 335.5	KENAI RADIO 122.4	UNICOM 122.8 (CTAF)
---------------------------	--	-----------------------------	-------------------------------



CATEGORY	A	B	C	D
LPV DA		329-1	250 (300-1)	
LNAV/VNAV DA		329-1	250 (300-1)	
LNAV MDA		400-1	321 (400-1)	
C CIRCLING	460-1 381 (400-1)	540-1 461 (500-1)	540-1½ 461 (500-1½)	800-2¼ 721 (800-2¼)

AK, 03 NOV 2022 to 29 DEC 2022

AK, 03 NOV 2022 to 29 DEC 2022