

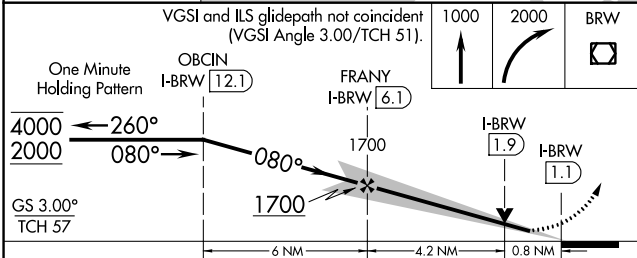
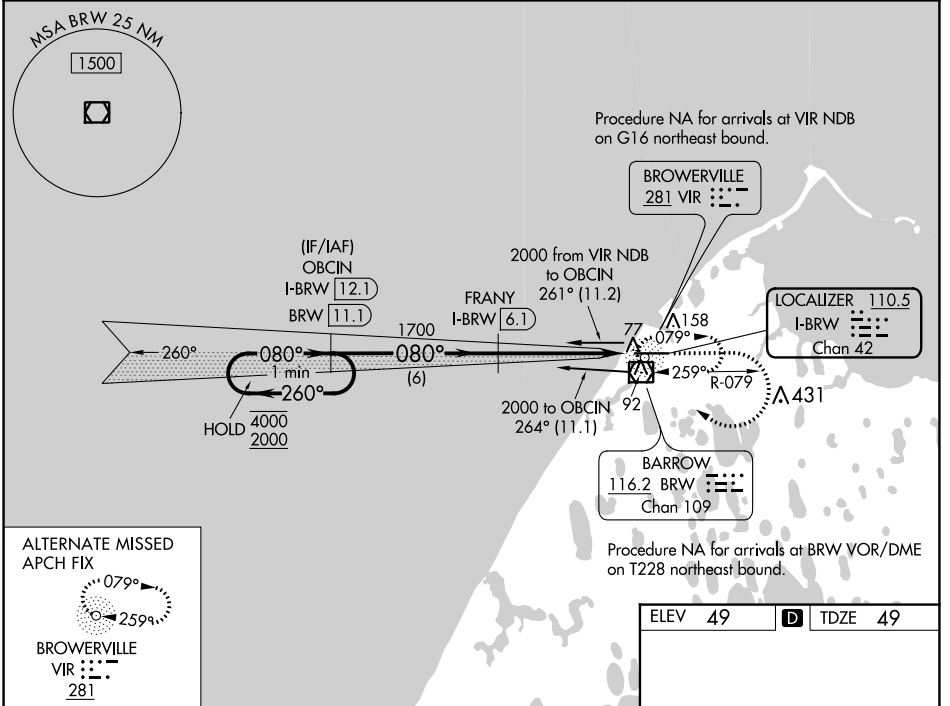
LOC/DME I-BRW 110.5 Chan 42	APP CRS 080°	Rwy Idg 5900 TDZE 49 Apt Elev 49
---	------------------------	---

ILS or LOC RWY 8

WILEY POST-WILL ROGERS MEML (BRW)(PABR)

DME required.	MALSR	MISSED APPROACH: Climb to 1000 then climbing right turn to 2000 direct BRW VOR/DME and hold, continue climb-in-hold to 2000.
<p>▼ Circling NA for Cat A north of Rwy 8-26.</p> <p>▲ Autopilot coupled approach NA below 290.</p> <p>For inop ALS, increase S-LOC 8 Cat C/D visibility to RVR 4500.</p> <p># RVR 1800 authorized with use of HUD to DA.</p>		

AFIS 132.15	ANCHORAGE CENTER 135.3 239.25	BARROW RADIO 123.6 (CTAF) 0
-----------------------	---	---------------------------------------



ELEV 49	D	TDZE 49																				
<table border="1"> <tr> <th>CATEGORY</th> <th>A</th> <th>B</th> <th>C</th> <th>D</th> </tr> <tr> <td>S-ILS 8#</td> <td colspan="4">249/24 200 (200-½)</td> </tr> <tr> <td>S-LOC 8</td> <td colspan="4">340/40 291 (300-¾)</td> </tr> <tr> <td>C CIRCLING</td> <td>420-1 371 (400-1)</td> <td>500-1 451 (500-1)</td> <td>500-1½ 451 (500-1½)</td> <td>680-2 631 (700-2)</td> </tr> </table>			CATEGORY	A	B	C	D	S-ILS 8#	249/24 200 (200-½)				S-LOC 8	340/40 291 (300-¾)				C CIRCLING	420-1 371 (400-1)	500-1 451 (500-1)	500-1½ 451 (500-1½)	680-2 631 (700-2)
CATEGORY	A	B	C	D																		
S-ILS 8#	249/24 200 (200-½)																					
S-LOC 8	340/40 291 (300-¾)																					
C CIRCLING	420-1 371 (400-1)	500-1 451 (500-1)	500-1½ 451 (500-1½)	680-2 631 (700-2)																		
REIL Rwy 26 0 HIRL Rwy 8-26 0																						

AK, 25 JAN 2024 to 21 MAR 2024

AK, 25 JAN 2024 to 21 MAR 2024

ILS or LOC RWY 8

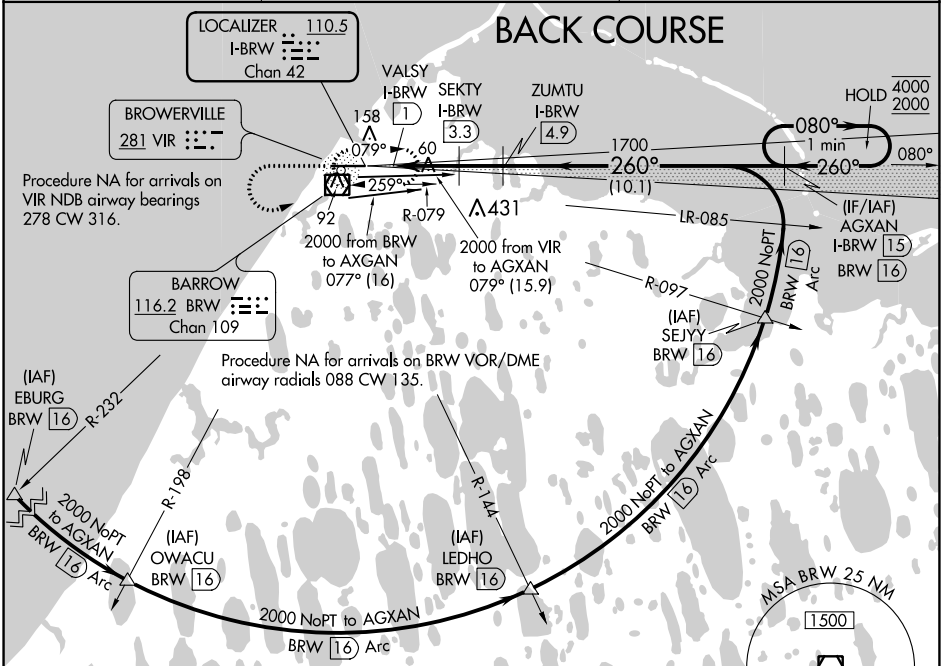
LOC/DME I-BRW 110.5 Chan 42	APP CRS 260°	Rwy Idg 5900 TDZE 46 Apt Elev 49
---	------------------------	---

LOC BC RWY 26

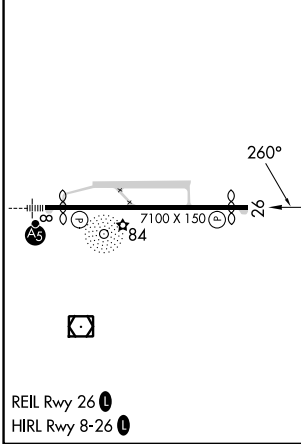
WILEY POST-WILL ROGERS MEML (BRW)(PABR)

DME required.	MISSED APPROACH: Climb to 1600 then climbing left turn to 2000 direct BRW VOR/DME and hold, continue climb-in-hold to 2000.
	Circling NA for Cat A north of Rwy 8-26.

AFIS 132.15	ANCHORAGE CENTER 135.3 239.25	BARROW RADIO 123.6 (CTAF) 0
-----------------------	---	---------------------------------------



ELEV 49	D TDZE 46
----------------	-------------------------



1600	2000	BRW	Use I-BRW DME when on the localizer course. Disregard glide slope indications.	
		AGXAN I-BRW 15	One Minute Holding Pattern	
CATEGORY	A	B	C	D
S-26	360-1 $\frac{3}{8}$ 314 (400-1 $\frac{3}{8}$)			
C CIRCLING	420-1 $\frac{3}{8}$ 371 (400-1 $\frac{3}{8}$)	500-1 $\frac{3}{8}$ 451 (500-1 $\frac{3}{8}$)	500-1 $\frac{1}{2}$ 451 (500-1 $\frac{1}{2}$)	680-2 631 (700-2)

LOC BC RWY 26

AK, 25 JAN 2024 to 21 MAR 2024

AK, 25 JAN 2024 to 21 MAR 2024

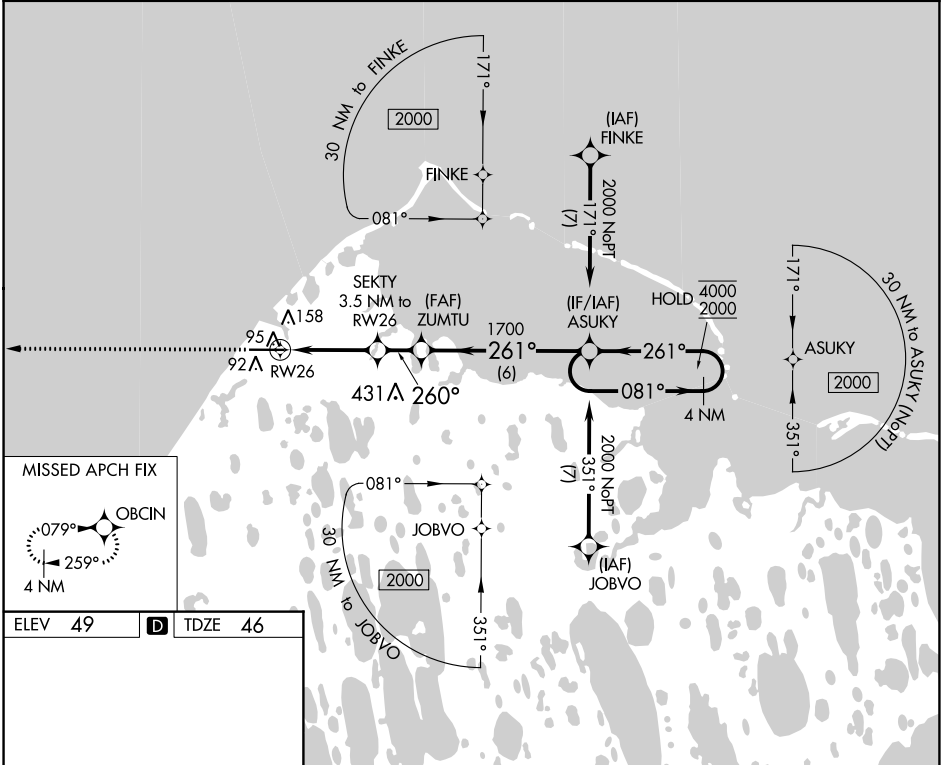
APP CRS	Rwy Idg	5900
260°	TDZE	46
	Apt Elev	49

RNAV (GPS) RWY 26

WILEY POST-WILL ROGERS MEML (BRW)(PABR)

RNP APCH-GPS.	MISSED APPROACH: Climb to 2000 direct OBCIN and hold.
∇ ▲	Circling NA for Cat A north of Rwy 8-26

AFIS 132.15	ANCHORAGE CENTER 135.3 239.25	BARROW RADIO 123.6 (CTAF) 0
-----------------------	---	---------------------------------------



ELEV 49 **D** TDZE 46

REIL RWY 26 **0**
HIRL RWY 8-26 **0**

2000	OBCIN	SEKTY 3.5 NM to RWY 26	ZUMTU	ASUKY	4 NM Holding Pattern
0.9 NM to RWY 26	0.9 NM	2.6 NM	1.6 NM	6 NM	081° → 4000 ← 261° 2000
∇	∇	∇	∇	∇	∇
CATEGORY	A	B	C	D	
LNAV MDA	360-1 314 (400-1)				
C CIRCLING	420-1 371 (400-1)	500-1 451 (500-1)	500-1½ 451 (500-1½)	680-2 631 (700-2)	

AK, 25 JAN 2024 to 21 MAR 2024

AK, 25 JAN 2024 to 21 MAR 2024

WAAS CH 86915 W08A	APP CRS 080°	Rwy Idg TDZE Apt Elev	5900 49 49
--	------------------------	-----------------------------	---------------------------------------

RNAV (GPS) RWY 8

WILEY POST-WILL ROGERS MEML (BRW)(PABR)

RNP APCH-GPS.

⚠ Inop table does not apply to LPV and LNAV/VNAV all Cats.
For uncompensated Baro-VNAV systems, LNAV/VNAV NA below -18°C or above 54°C. Circling NA for Cat A north of Rwy 8-26.

MALS

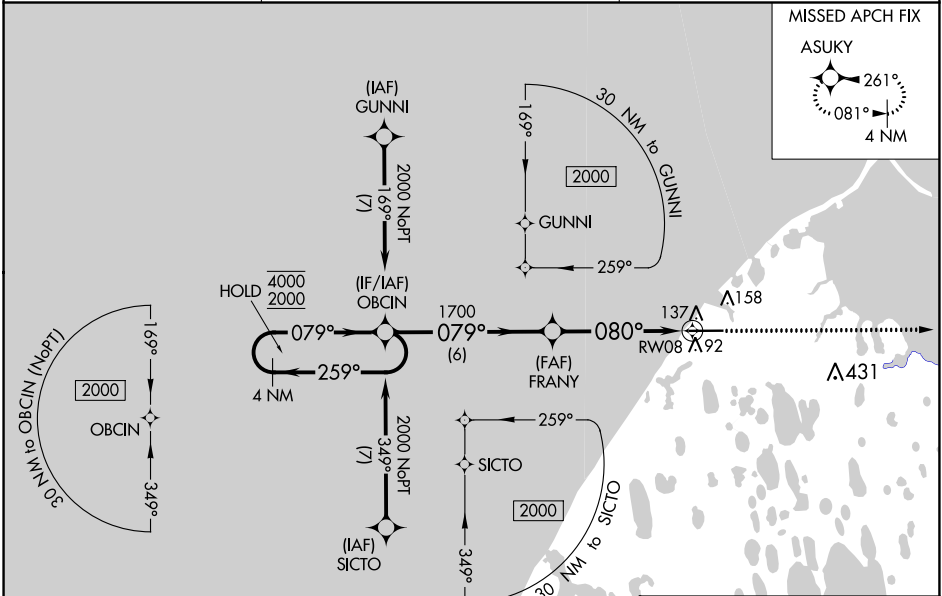


MISSED APPROACH: Climb to 2000 direct ASUKY and hold.

AFIS
132.15

ANCHORAGE CENTER
135.3 239.25

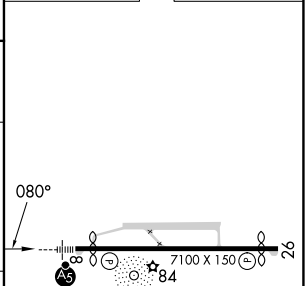
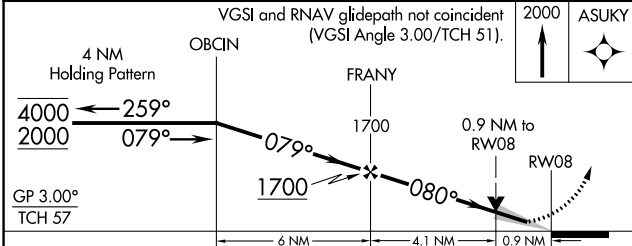
BARROW RADIO
123.6 (CTAF)



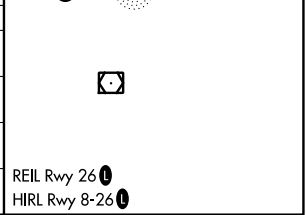
AK, 25 JAN 2024 to 21 MAR 2024

AK, 25 JAN 2024 to 21 MAR 2024

ELEV 49	D	TDZE 49
---------	----------	---------



CATEGORY	A	B	C	D
LPV DA		249/40	200 (200-¾)	
LNAV/VNAV DA		299/40	250 (300-¾)	
LNAV MDA		400/40	351 (400-¾)	
C CIRCLING	420-1 371 (400-1)	500-1 451 (500-1)	500-1½ 451 (500-1½)	680-2 631 (700-2)



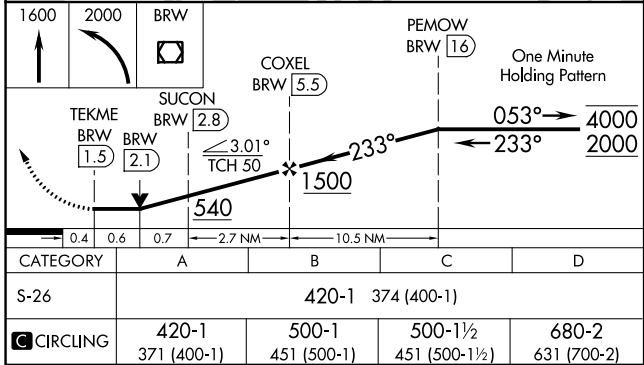
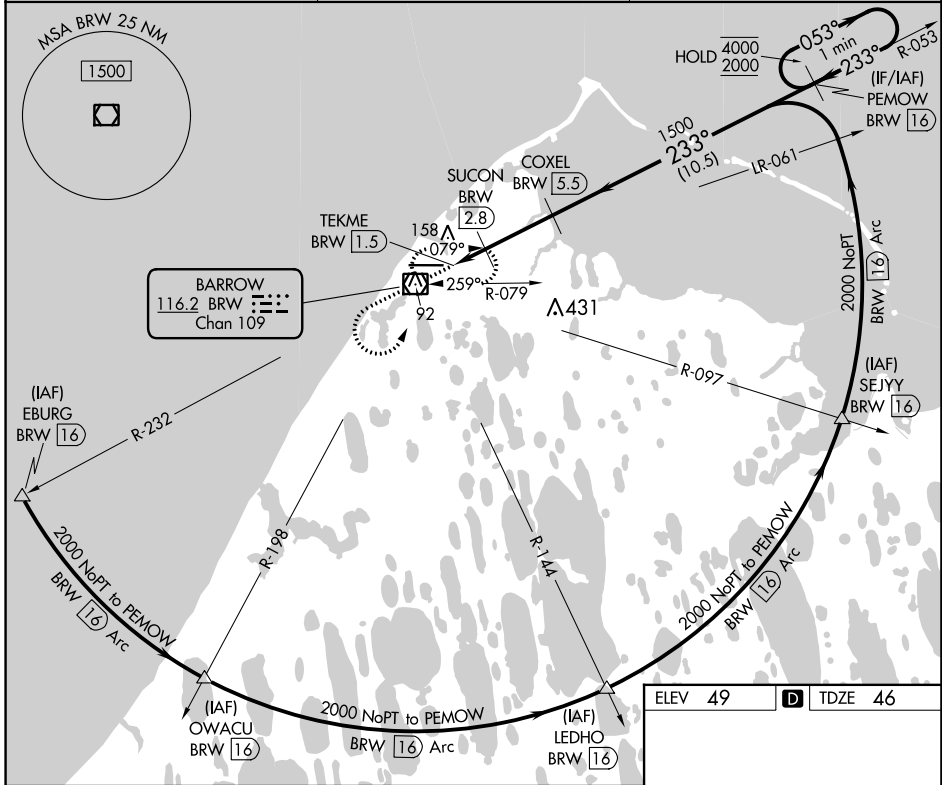
VOR/DME BRW 116.2 Chan 109	APP CRS 233°	Rwy Idg TDZE Apt Elev	5900 46 49
--	------------------------	-----------------------------	---------------------------------------

VOR RWY 26

WILEY POST-WILL ROGERS MEML (BRW)(PABR)

DME required.	MISSED APPROACH: Climb to 1600 then climbing left turn to 2000 direct BRW VOR/DME and hold, continue climb-in-hold to 2000.
	Circling NA for Cat A north of Rwy 8-26.

AFIS 132.15	ANCHORAGE CENTER 135.3 239.25	BARROW RADIO 123.6 (CTAF) 0
-----------------------	---	---------------------------------------



ELEV 49		TDZE 46
REIL Rwy 26	HIRL Rwy 8-26	

VOR RWY 26

AK, 25 JAN 2024 to 21 MAR 2024

AK, 25 JAN 2024 to 21 MAR 2024