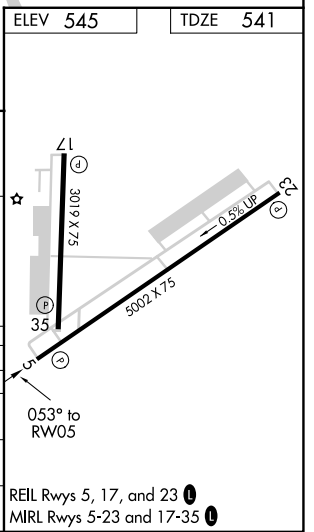
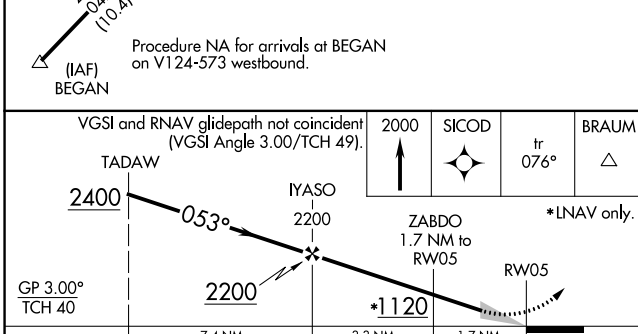
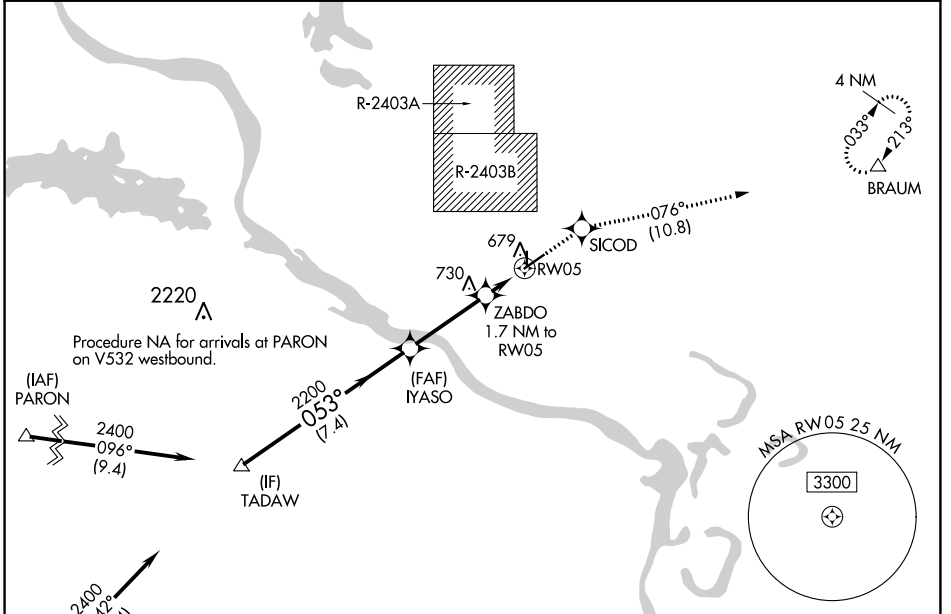


WAAS CH <b>58106</b> <b>W05A</b>	APP CRS <b>053°</b>	Rwy Idg TDZE Apt Elev	<b>5002</b> <b>541</b> <b>545</b>
--	------------------------	-----------------------------	---

# RNAV (GPS) RWY 5

NORTH LITTLE ROCK MUNI (ORK)

RNP APCH.		MISSED APPROACH: Climb to 2000 direct SICOD and on track 076° to BRAUM and hold.	
<p><b>⚠</b> Circling NA for Cats B and C north of Rwy 5-23 when restricted area R-2403B in use. For uncompensated Baro-VNAV systems, LNAV/VNAV NA below -16°C or above 54°C.</p>			
AWOS-3PT <b>123.775</b>	LITTLE ROCK APP CON <b>119.5 306.2</b>	CLNC DEL <b>121.6</b>	UNICOM <b>123.075 (CTAF) 0</b>



CATEGORY	A	B	C	D
LPV DA	854- <sup>7</sup> / <sub>8</sub>	313 (400- <sup>7</sup> / <sub>8</sub> )		NA
LNAV/VNAV DA	986- <sup>13</sup> / <sub>8</sub>	445 (500- <sup>13</sup> / <sub>8</sub> )		NA
LNAV MDA	1000-1	459 (500-1)	1000- <sup>13</sup> / <sub>8</sub> 459 (500- <sup>13</sup> / <sub>8</sub> )	NA
<b>C</b> CIRCLING	1060-1	515 (600-1)	1080- <sup>1</sup> / <sub>2</sub> 535 (600- <sup>1</sup> / <sub>2</sub> )	NA

SC-1, 22 FEB 2024 to 21 MAR 2024

SC-1, 22 FEB 2024 to 21 MAR 2024