

17117

POINT MUGU NAS (NAVAL BASE VENTURA CO) (KNTD)

DOYLE-NINE DEPARTURE (DOYLE 9 • DOYLE)

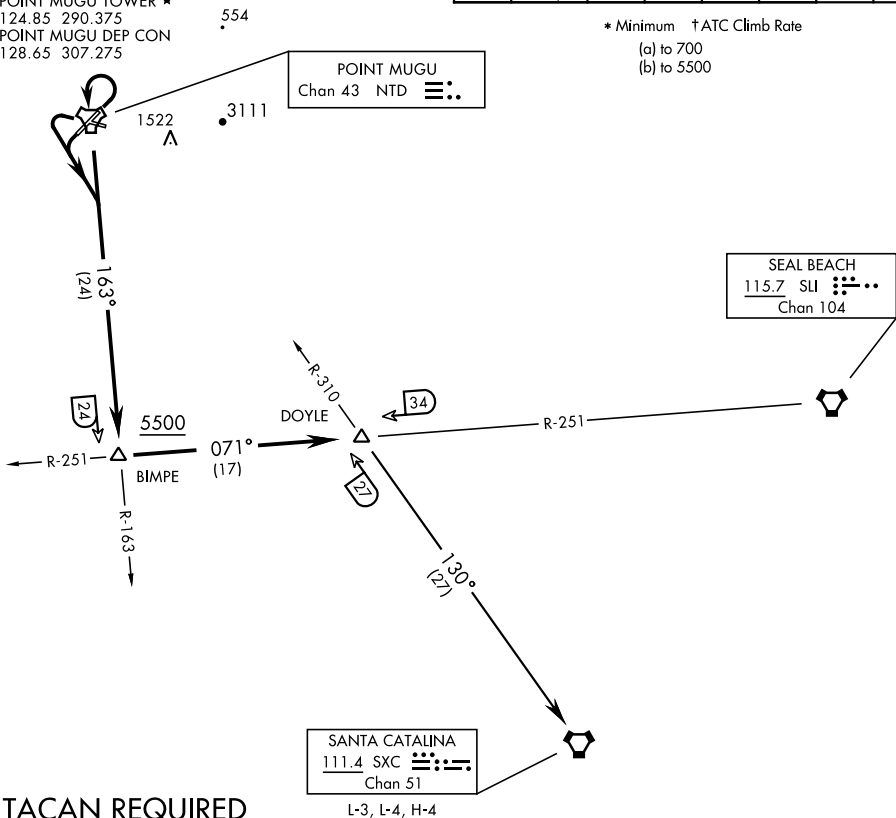
OXNARD, CALIFORNIA

ATIS ★ 125.55 363.05
 CLNC DEL
 120.75 279.55
 GND CON
 121.6 360.2
 POINT MUGU TOWER ★
 124.85 290.375
 POINT MUGU DEP CON
 128.65 307.275

SHL-925 [USN]

Rwy	Knots	60	120	180	240	300	360
* 03(a)	V/V(fpm)	205	410	615	820	1025	1230
† 03(b)	V/V(fpm)	215	430	645	860	1075	1290
† 21(b)	V/V(fpm)	232	464	696	928	1160	1392
† 27(b)	V/V(fpm)	212	424	636	848	1060	1272

* Minimum † ATC Climb Rate
 (a) to 700
 (b) to 5500



TACAN REQUIRED

DEPARTURE ROUTE DESCRIPTION

TAKE-OFF RWY 3: Climbing left turn within 3 DME of NTD TACAN, direct NTD, thence...

TAKE-OFF RWY 21, 27: Left turn, thence...

Intercept NTD R-163 and via NTD R-163 to BIMPE (NTD R-163/24 DME), then via SLI VORTAC R-251 to DOYLE, then via assigned routing. Cross BIMPE at or above 5500.

SANTA CATALINA TRANSITION (DOYLE 9 • SXC): DOYLE (SLI R-251/34 DME) to SANTA CATALINA VORTAC via SXC R-310. Then as filed.

DOYLE-NINE DEPARTURE (DOYLE 9 • DOYLE)

OXNARD, CALIFORNIA

POINT MUGU NAS (NAVAL BASE VENTURA CO) (KNTD)

SW-3, 22 FEB 2024 to 21 MAR 2024

SW-3, 22 FEB 2024 to 21 MAR 2024