

WAAS CH <b>50326</b> <b>W27A</b>	APP CRS <b>278°</b>	Rwy Idg TDZE Apt Elev	<b>4001</b> <b>660</b> <b>660</b>
--	------------------------	-----------------------------	---

# RNAV (GPS) RWY 27

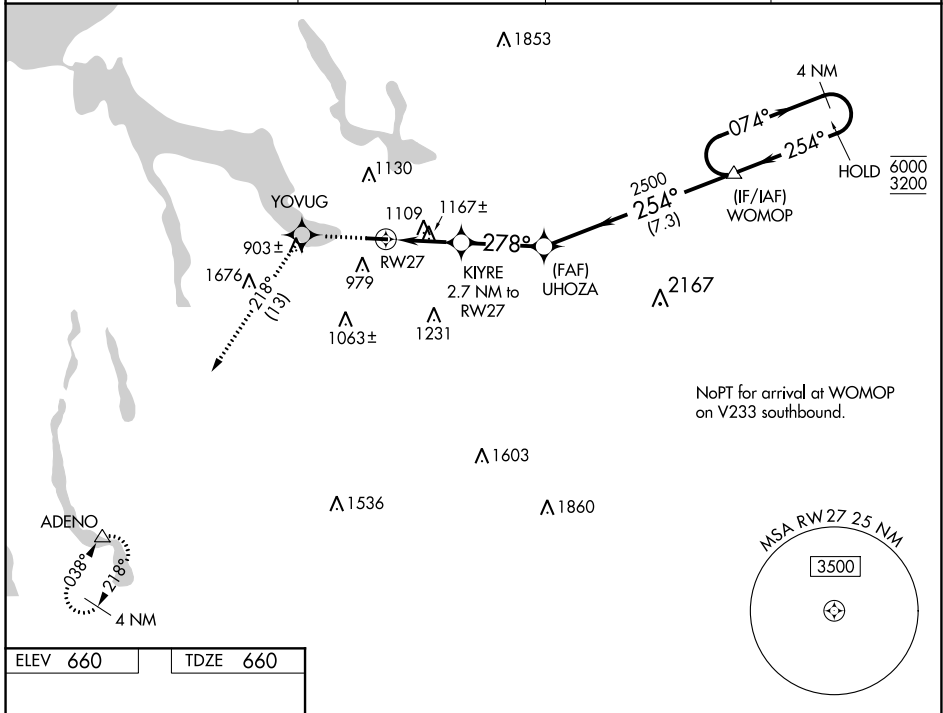
BOYNE CITY MUNI (N98)

RNP APCH.

**V** Procedure NA at night. Rwy 27 helicopter visibility reduction below 1 SM NA. Use  
**NA** Charlevoix altimeter setting, when not received, use Harbor Springs altimeter setting.

MISSED APPROACH: Climb to 3000 direct YOYUG and on track 218° to ADENO and hold.

CVX AWOS-3P <b>120.0</b>	MINNEAPOLIS CENTER <b>134.6 354.05</b>	UNICOM <b>122.8 (CTAF)</b>	<b>122.9</b>
-----------------------------	---	-------------------------------	--------------



NoPT for arrival at WOMOP on V233 southbound.

ELEV <b>660</b>	TDZE <b>660</b>
-----------------	-----------------

	3000	YOYUG	ADENO	Visual Segment - Obstacles.	4 NM Holding Pattern
	↑		tr 218°	△	
		KUYRE 2.7 NM to RW27	UHOZA		WOMOP
		1540	2500		6000 3200
		2.7 NM	3 NM	7.3 NM	
CATEGORY	A	B	C	D	
LP MDA	1460-1 800 (800-1)	1460-1¼ 800 (800-1¼)			NA
LNAV MDA	1480-1 820 (900-1)	1480-1¼ 820 (900-1¼)			NA
CIRCLING	1480-1¼ 820 (900-1¼)	1500-1¼ 840 (900-1¼)			NA

REIL Rwy 27 **1**  
MIRL Rwy 9-27 **1**

WAAS CH <b>97526</b> <b>W09A</b>	APP CRS <b>098°</b>	Rwy Idg TDZE Apt Elev	<b>3402</b> <b>659</b> <b>660</b>
--	------------------------	-----------------------------	---

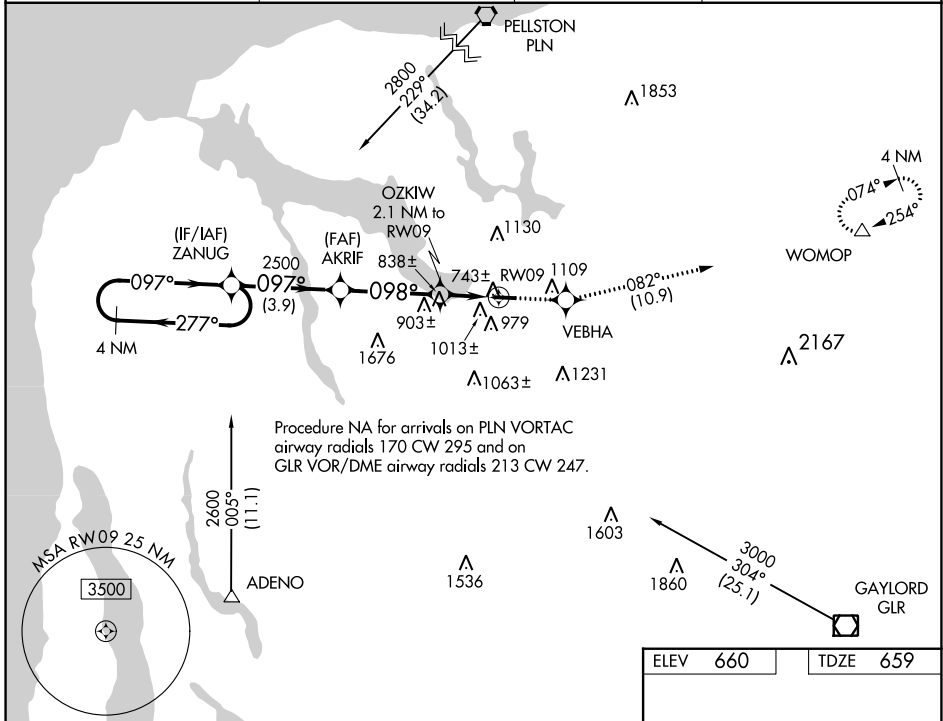
# RNAV (GPS) RWY 9

BOYNE CITY MUNI (N98)

**⚠** Use Charlevoix altimeter setting; when not received, use Harbor Springs altimeter setting.  
**⚠ NA** Procedure NA at night. DME/DME RNP-0.3 NA. Helicopter visibility reduction below 1 SM NA.

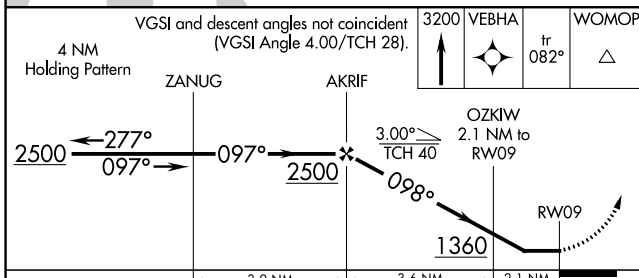
**MISSED APPROACH:** Climb to 3200 direct VEBHA and on track 082° to WOMOP and hold.

CXV AWOS-3P <b>120.0</b>	MINNEAPOLIS CENTER <b>134.6 354.05</b>	UNICOM <b>122.8</b> (CTAF)	<b>122.9</b> <b>0</b>
-----------------------------	---	-------------------------------	-----------------------



EC-1, 22 FEB 2024 to 21 MAR 2024

EC-1, 22 FEB 2024 to 21 MAR 2024



CATEGORY	A	B	C	D
LP MDA	1060-1	401 (400-1)		NA
INAV MDA	1260-1	601 (600-1)		NA
CIRCLING	1480-1¼ 820 (900-1¼)	1500-1¼ 840 (900-1¼)		NA

ELEV 660	TDZE 659
----------	----------

REIL Rwy 27 **0**  
MIRL Rwy 9-27 **0**