

WAAS CH 50424 W26A	APP CRS 264°	Rwy Idg TDZE Apt Elev	3297 881 881
----------------------------------------	------------------------	-----------------------------	-----------------------------------------

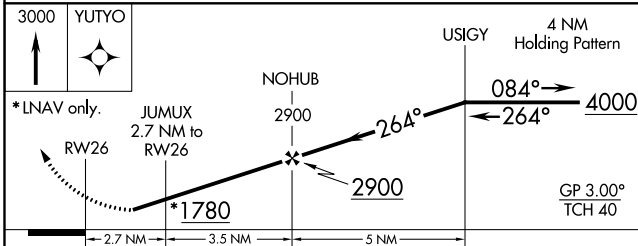
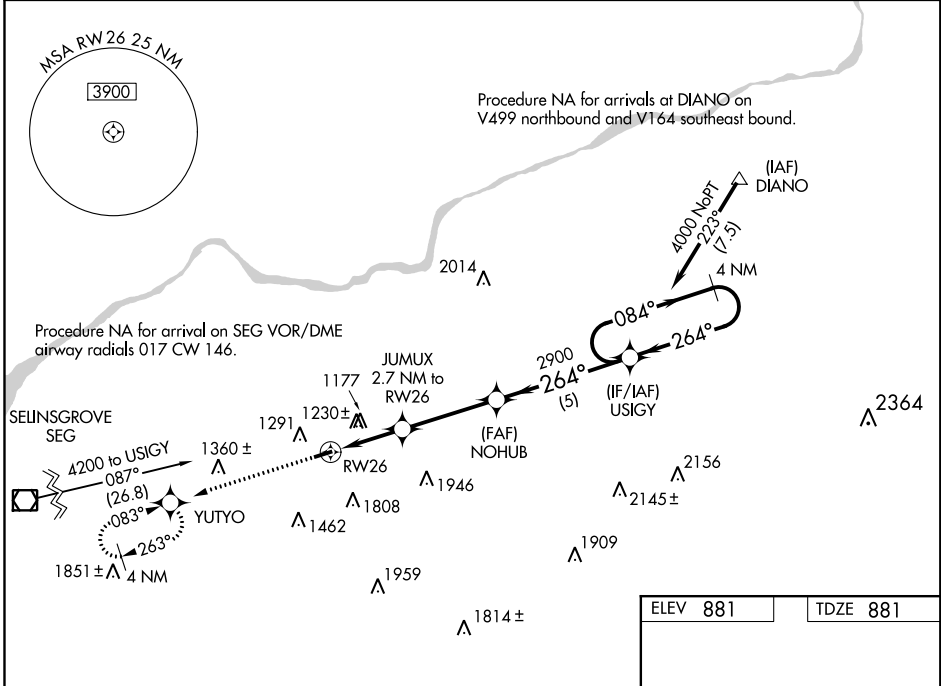
RNAV (GPS) RWY 26

NORTHUMBERLAND COUNTY (N79)

⚠ Baro-VNAV NA when using Selinsgrove altimeter setting. For uncompensated Baro-VNAV systems, LNAV/VNAV NA below -16°C (4°F) or above 54°C (130°F). Helicopter visibility reduction below 1 SM NA. DME/DME RNP-0.3 NA. Procedure NA at night. When local altimeter setting not received, use Selinsgrove altimeter setting and increase all DA 94 feet and all MDA 100 feet, increase visibility LPV all Cats 3/8 SM; LNAV/VNAV all Cats 1/4 SM; LNAV Cat C 1/4 mile.

MISSED APPROACH:
Climb to 3000 direct YUTYO and hold.

AWOS-3 119.175	HARRISBURG APP CON 118.25 269.45	UNICOM 122.8 (CTAF)	121.8 0
--------------------------	--------------------------------------------	-------------------------------	----------------



ELEV 881	TDZE 881
----------	----------

CATEGORY	A	B	C	D
LPV DA	1436-1 ⁷ / ₈	555 (600-1 ⁷ / ₈)		NA
LNAV/VNAV DA	1559-2 ¹ / ₂	678 (700-2 ¹ / ₂)		NA
LNAV MDA	1480-1	599 (600-1)	1480-1 ¹ / ₄ 599 (600-1 ³ / ₄)	NA
CIRCLING	1820-1 ¹ / ₄ 939 (1000-1 ¹ / ₄)	1880-1 ¹ / ₂ 999 (1000-1 ¹ / ₂)	2120-3 1239 (1300-3)	NA

NE-4, 19 MAY 2022 to 16 JUN 2022

NE-4, 19 MAY 2022 to 16 JUN 2022

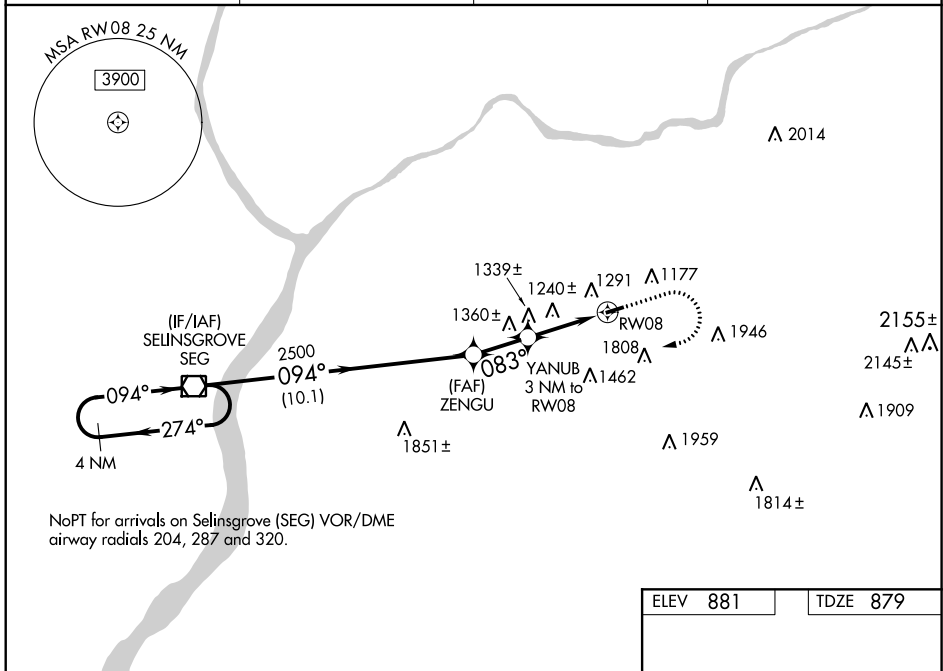
WAAS CH 87024 W08A	APP CRS 083°	Rwy Idg 3297 TDZE 879 Apt Elev 881
----------------------------------------	------------------------	---------------------------------------------------------------

RNAV (GPS) RWY 8
NORTHUMBERLAND COUNTY (N79)

NA Baro-VNAV NA when using Selinsgrove altimeter setting. For uncompensated Baro-VNAV systems, LNAV/VNAV NA below -1.6°C (4°F) or above 54°C (130°F). Helicopter visibility reduction below 1 SM NA. DME/DME RNP-0.3 NA. Procedure NA at night. When local altimeter setting not received, use Selinsgrove altimeter setting, and increase all DA 94 feet and all MDA 100 feet, increase LPV all Cats visibility ¼ SM; LNAV/VNAV all Cats visibility ½ SM; and LNAV Cat C visibility ½ SM.

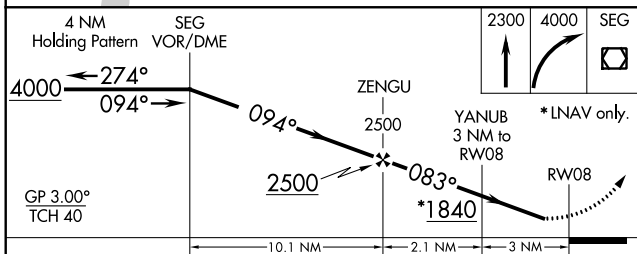
MISSED APPROACH:
Climb to 2300 then climbing right turn to 4000 direct SEG VOR/DME and hold.

AWOS-3 119.175	HARRISBURG APP CON 118.25 269.45	UNICOM 122.8 (CTAF)	121.8 0
--------------------------	--------------------------------------------	-------------------------------	----------------

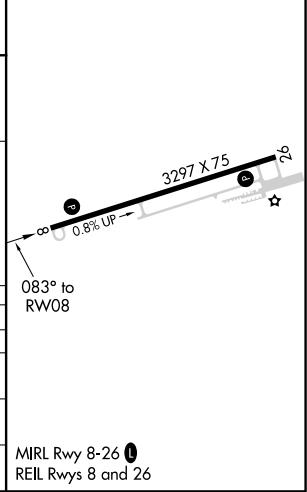


NoPT for arrivals on Selinsgrove (SEG) VOR/DME airway radials 204, 287 and 320.

ELEV 881	TDZE 879
-----------------	-----------------



CATEGORY	A	B	C	D
LPV DA	1146-1	267 (300-1)		NA
LNAV/VNAV DA	1603-2½	724 (800-2½)		NA
LNAV MDA	1620-1 741 (800-1)	1620-1¼ 741 (800-1¼)	1620-2½ 741 (800-2½)	NA
CIRCLING	1820-1¼ 939 (1000-1¼)	1880-1½ 999 (1000-1½)	2120-3 1239 (1300-3)	NA



NE-4, 19 MAY 2022 to 16 JUN 2022

NE-4, 19 MAY 2022 to 16 JUN 2022

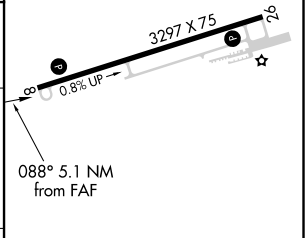
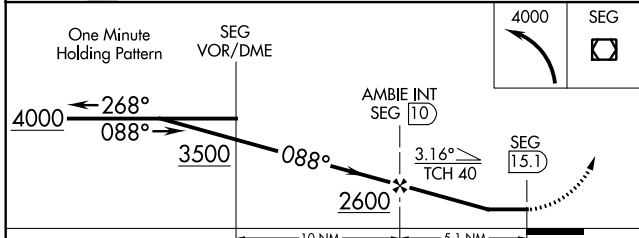
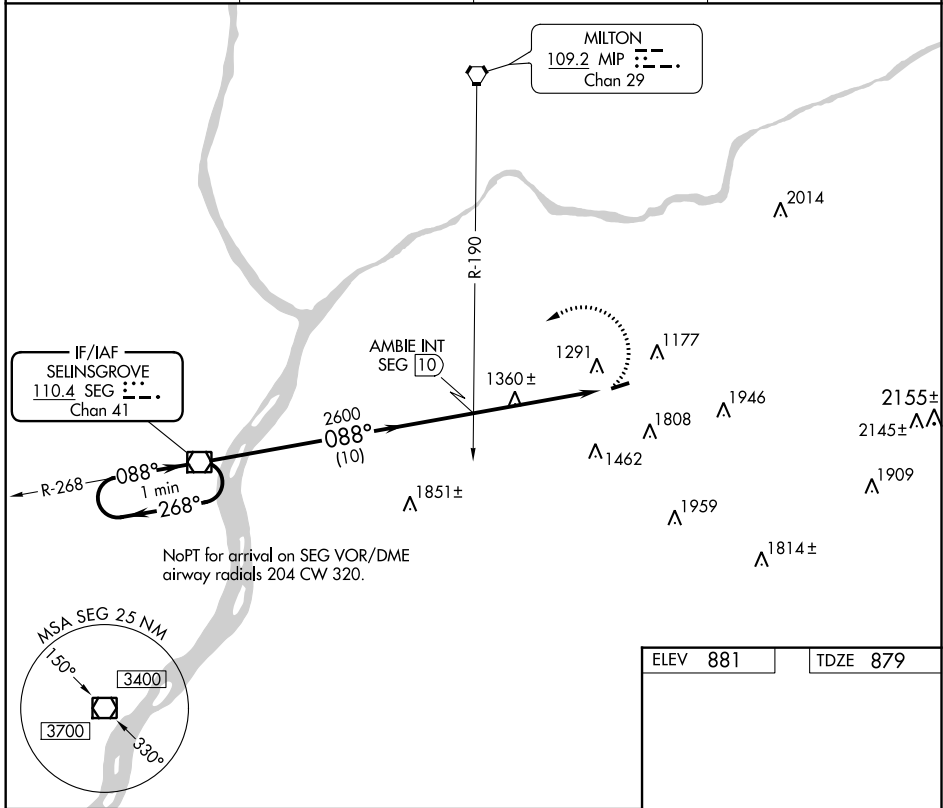
VOR/DME SEG 110.4 Chan 41	APP CRS 088°	Rwy Idg TDZE 3297 879 Apt Elev 881
----------------------------------------	------------------------	---------------------------------------------------------------------

VOR RWY 8
NORTHUMBERLAND COUNTY (N79)

NA Helicopter visibility reduction below 1 SM NA. Procedure NA at night. When local altimeter setting not received, use Selingsgrove altimeter setting and increase all MDA 100 feet.

MISSED APPROACH: Climbing left turn to 4000 direct SEG VOR/DME and hold.

AWOS-3 119.175	HARRISBURG APP CON 118.25 269.45	UNICOM 122.8 (CTAF)	121.8 0
--------------------------	--------------------------------------------	-------------------------------	-----------------------



CATEGORY	A	B	C	D
S-8	1980-1¼ 1101 (1100-1¼)	1980-1½ 1101 (1100-1½)	1980-3 1101 (1100-3)	NA
CIRCLING	1980-1¼ 1099 (1100-1¼)	1980-1½ 1099 (1100-1½)	2120-3 1239 (1300-3)	NA

MIRL Rwy 8-26 **0**
REIL Rws 8 and 26

FAF to MAP 5.1 NM

Knots	60	90	120	150	180
Min:Sec	5:06	3:24	2:33	2:02	1:42

NE-4, 19 MAY 2022 to 16 JUN 2022

NE-4, 19 MAY 2022 to 16 JUN 2022