

(BARI2.BARII) 19227

# BARII TWO DEPARTURE (RNAV)

AL-276 (FAA)

SELFRIDGE ANGB (MTC)  
MOUNT CLEMENS, MICHIGAN

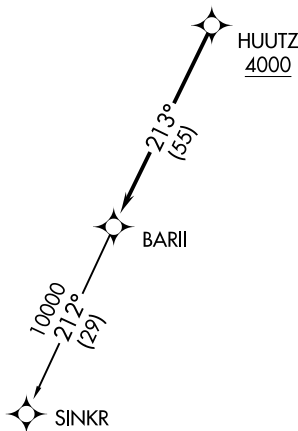
**TOP ALTITUDE:  
ASSIGNED BY ATC**

ATIS  
 125.325 270.1  
 CLNC DEL  
 128.3 275.8  
 GND CON  
 128.3 275.8  
 SELFRIDGE TOWER ★  
 120.15 225.4  
 SELFRIDGE DEP CON  
 119.6 391.9



### TAKEOFF MINIMUMS:

Rwy 1: Standard.  
 Rwy 19: Standard with minimum climb  
 of 234' per NM to 1500.



NOTE: RNAV 1.  
 NOTE: RADAR required.  
 NOTE: DME/DME/IRU or GPS required.  
 NOTE: Turbojet departures at/above 10000,  
 maintain 280K until advised by ATC.

NOTE: Chart not to scale.

### DEPARTURE ROUTE DESCRIPTION

TAKEOFF RUNWAY 1: Climb on heading 007° or as assigned for RADAR vectors to cross HUUTZ at or above 4000, thence....  
TAKEOFF RUNWAY 19: Climb on heading 187° or as assigned for RADAR vectors to cross HUUTZ at or above 4000, thence....

....on track 213° to BARII, then on (transition). Maintain ATC assigned altitude, expect filed altitude 10 minutes after departure.

SINKR TRANSITION (BARI2.SINKR):

**BARII TWO DEPARTURE (RNAV)**  
 (BARI2.BARII) 15AUG19

MOUNT CLEMENS, MICHIGAN  
 SELFRIDGE ANGB (MTC)

EC-1, 22 FEB 2024 to 21 MAR 2024

EC-1, 22 FEB 2024 to 21 MAR 2024