

WAAS CH 42829 W21A	APP CRS 212°	Rwy Idg TDZE 887 Apt Elev 887	7015
--	------------------------	---	-------------

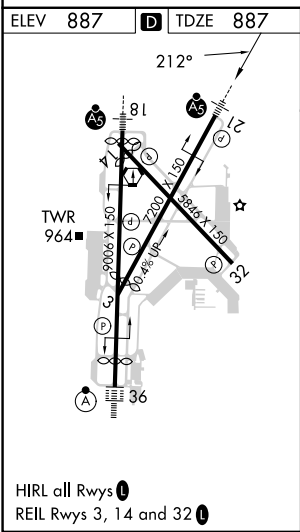
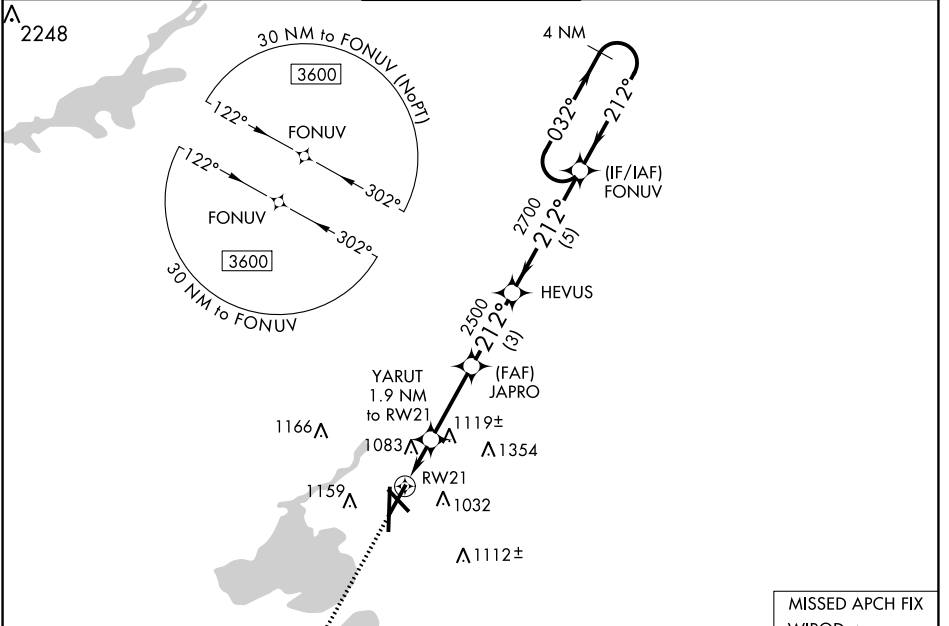
RNAV (GPS) RWY 21
DANE COUNTY RGNL/TRUAX FLD (MSN)

⚠ For uncompensated Baro-VNAV systems, LNAV/VNAV NA below -20°C (-4°F) or above 54°C (130°F). DME/DME RNP-0.3 NA. For inop MALSR, increase LNAV/VNAV all Cats visibility to 1 3/4 mile and LNAV Cat C/D visibility to 1 1/2 mile.



MISSED APPROACH:
Climb to 3600 direct WIROD and hold.

ATIS 124.65 278.3	MADISON APP CON * 135.45 343.7	MADISON TOWER * 119.3 (CTAF) 0 257.8	GND CON 121.9 348.6	CLNC DEL 121.625	UNICOM 122.95
-----------------------------	--	--	-------------------------------	----------------------------	-------------------------



ELEV 887	D TDZE 887				
3600	WIROD	* LNAV only	FONUV	4 NM	Holding Pattern
↑	⬠	YARUT 1.9 NM to RW21	JAPRO 2500	HEVUS 2700	032° → 3600
		* 1.4 NM to RW21	* 1540	2500	← 212°
		1.4 NM	0.5	3 NM	5 NM
GP 3.00°	TCH 53				
CATEGORY	A	B	C	D	
LPV DA	1087-1/2		200 (200-1/2)		
LNAV/VNAV DA	1412-1 3/8		525 (600-1 1/8)		
LNAV MDA	1380-1/2		1380-1		493 (500-1)
C CIRCLING	1420-1	1460-1	1460-1 1/2	1700-2 3/4	533 (600-1) 573 (600-1) 573 (600-1 1/2) 813 (900-2 3/4)

EC-3, 22 FEB 2024 to 21 MAR 2024

EC-3, 22 FEB 2024 to 21 MAR 2024