

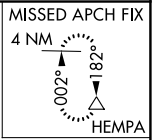
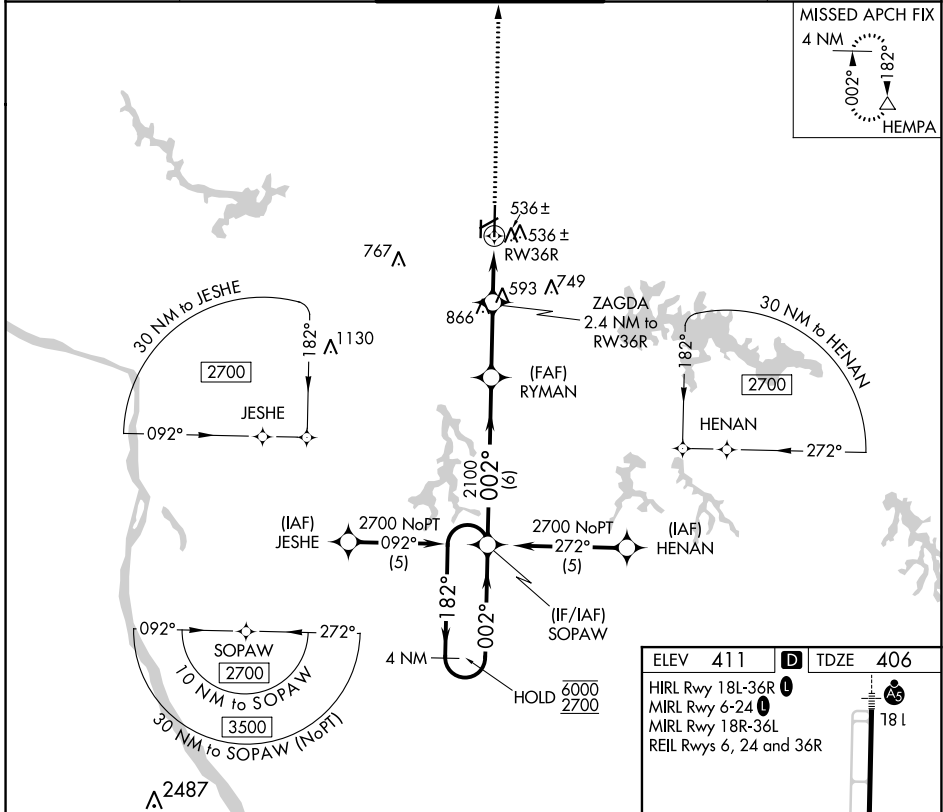
APP CRS	Rwy ldg	<b>6506</b>
<b>002°</b>	TDZE	<b>406</b>
	Apt Elev	<b>411</b>

# RNAV (GPS) RWY 36R

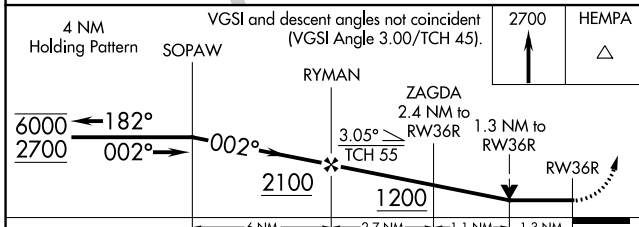
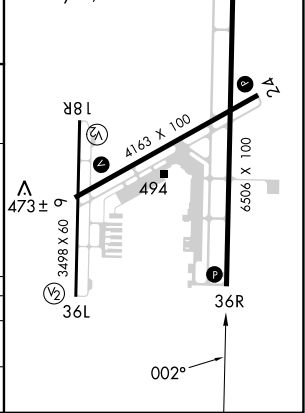
SOUTHERN ILLINOIS (MDH)

RNP APCH.			MISSED APPROACH: Climb to 2700 direct HEMPA and hold.	
⚠ Circling Rwy 6, 36L NA at night. ⚠ Rwy 36R helicopter visibility reduction below 3/4 SM NA.				

ATIS <b>119.725</b>	KANSAS CITY CENTER <b>127.475 346.275</b>	CARBONDALE TOWER ★ <b>125.35 (CTAF) 322.4</b>	GND CON <b>121.8</b>	UNICOM <b>122.95</b>
------------------------	--	--	-------------------------	-------------------------



ELEV 411	TDZE 406
HIRL Rwy 18L-36R	MIRL Rwy 6-24
MIRL Rwy 18R-36L	REIL Rws 6, 24 and 36R



CATEGORY	A	B	C	D
LNVA MDA	860-1	454 (500-1)	860-1 3/8	454 (500-1 3/8)
CIRCLING	900-1 489 (500-1)	920-1 509 (600-1)	1180-2 1/4 769 (800-2 1/4)	1180-2 1/2 769 (800-2 1/2)

EC-3, 22 FEB 2024 to 21 MAR 2024

EC-3, 22 FEB 2024 to 21 MAR 2024