

VOR/DME MCK 115.3 Chan 100	APP CRS 294°	Rwy Idg TDZE Apt Elev	5698 2558 2583
--	------------------------	-----------------------------	---

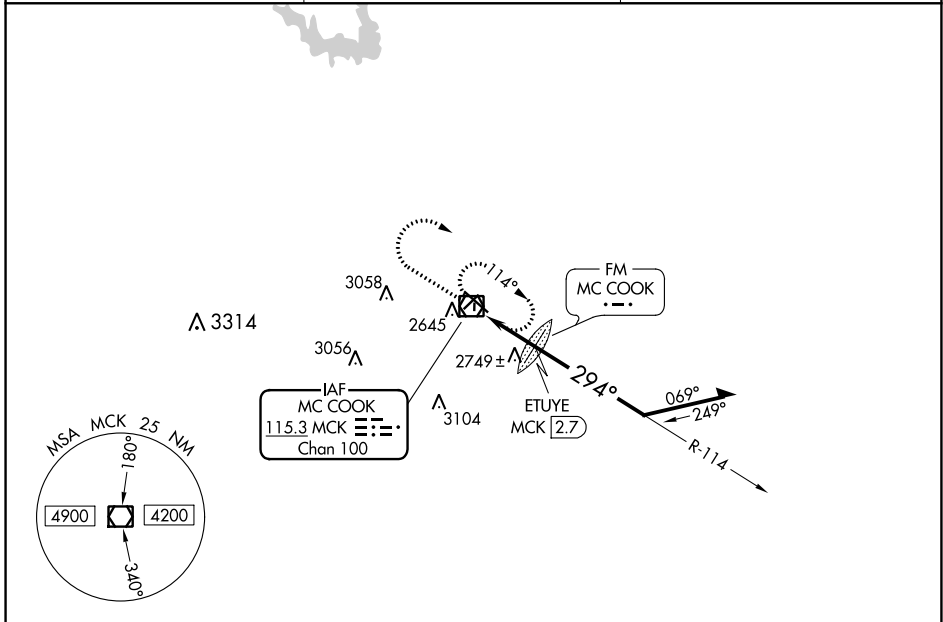
VOR RWY 30

MC COOK BEN NELSON RGNL (MCK)

⚠ VDP NA when using Imperial Muni altimeter setting. When local altimeter setting not received, use Imperial Muni altimeter setting; increase all MDAs 220 feet and visibility Cat B ¼ mile and Cat C ¾ mile. Circling NA to Rws 17 and 35.

MISSED APPROACH: Climb to 4500 then climbing right turn to 5000 direct MCK VOR/DME and hold.

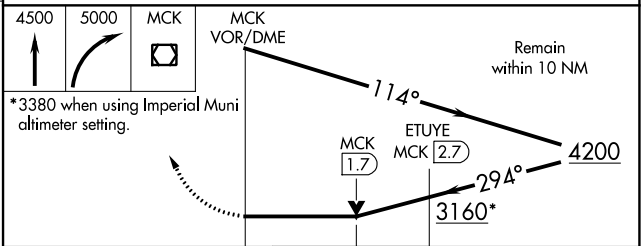
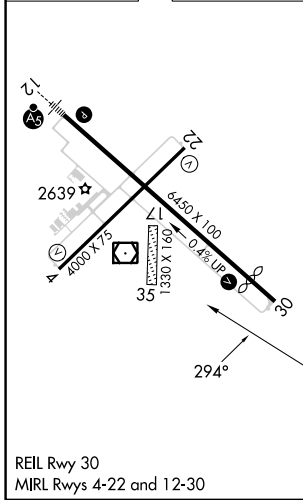
ASOS 119.025	DENVER CENTER 132.7 226.675	UNICOM 122.8 (CTAF) 0
------------------------	---------------------------------------	---------------------------------



NC-2, 22 FEB 2024 to 21 MAR 2024

NC-2, 22 FEB 2024 to 21 MAR 2024

ELEV 2583	D	TDZE 2558
-----------	----------	-----------



CATEGORY	A	B	C	D
S-30	3160-1	602 (600-1)	3160-1¾ 602 (600-1¾)	NA
CIRCLING	3160-1	577 (600-1)	3360-2¼ 777 (800-2¼)	NA
ETUYE FIX MINIMUMS (DME or FM REQUIRED)				
S-30	3000-1	442 (500-1)	3000-1⅜ 442 (500-1⅜)	NA
CIRCLING	3040-1 457 (500-1)	3120-1 537 (600-1)	3360-2¼ 777 (800-2¼)	NA