

WAAS CH <b>63035</b> <b>W19A</b>	APP CRS <b>189°</b>	Rwy Idg TDZE <b>497</b> Apt Elev <b>499</b>	<b>5007</b>
--	------------------------	---	-------------

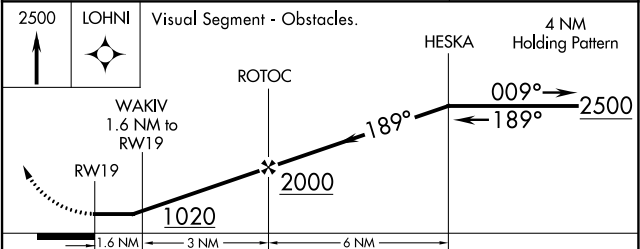
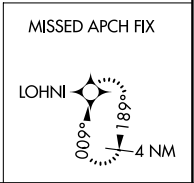
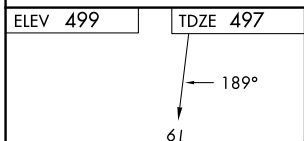
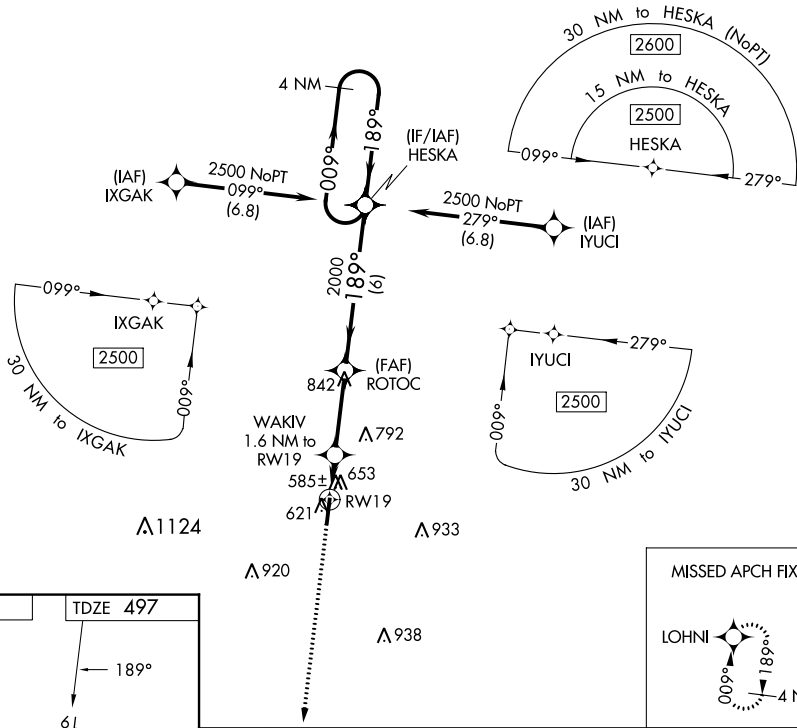
# RNAV (GPS) RWY 19

WILLIAM L WHITEHURST FLD (M08)

**⚠ NA** DME/DME RNP-0.3 NA. When local altimeter setting not received, use Jackson altimeter setting and increase all MDA 80 feet, increase LP Cats C/D visibilities ¼ mile, increase LNAV Cats C/D visibilities 1/8 mile and Circling Cats C/D visibilities ¼ mile. Rwy 19 helicopter visibility reduction below 3/4 SM NA. Rwy 1 helicopter visibility reduction below 1 SM NA.

MISSED APPROACH: Climb to 2500 direct LOHNI and hold.

AWOS-3 <b>121.125</b>	MEMPHIS CENTER <b>124.35 318.1</b>	UNICOM <b>123.0 (CTAF)</b>
--------------------------	---------------------------------------	-------------------------------



CATEGORY	A	B	C	D
LP MDA	840-1 343 (400-1)			
LNAV MDA	920-1	423 (500-1)	920-1¼	423 (500-1¼)
<b>C</b> CIRCLING	980-1	481 (500-1)	1100-1¾ 601 (700-1¾)	1360-2¾ 861 (900-2¾)

SE-1, 22 FEB 2024 to 21 MAR 2024

SE-1, 22 FEB 2024 to 21 MAR 2024