

ILS or LOC RWY 33

LOC I-LSF 110.7	APCH CRS 327°	Rwy ldg TDZE Arpt Elev 9302 226 227
---------------------------	-------------------------	---

[USA]

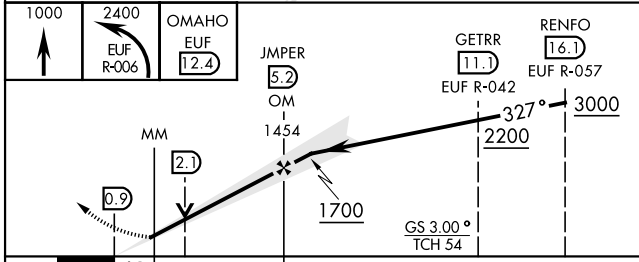
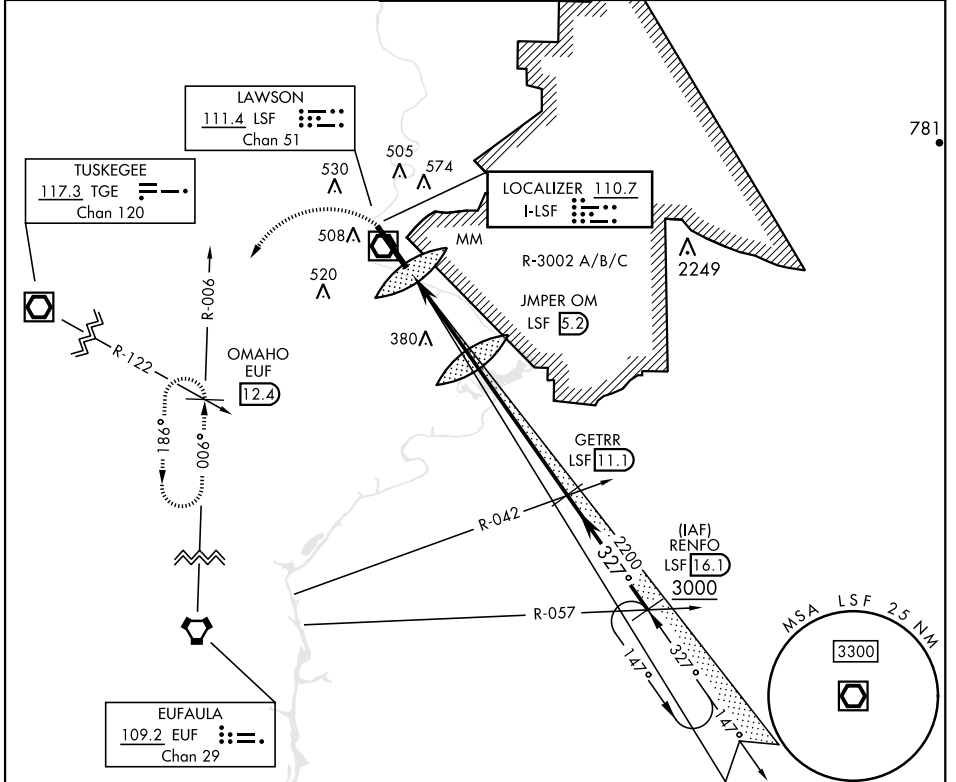
LAWSON AAF (KLSF)

▼ * Circling not authorized E of Rwy 15-33.
 NA when tower closed.

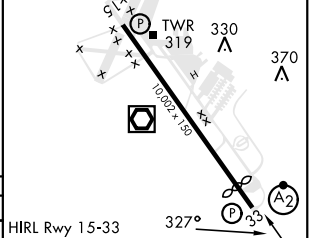
SALSF


MISSED APPROACH: Climb to 1000 then climbing left turn to 2400 via EUF R-006 to OMAHO INT/EUF 12.4 DME and hold.

ATIS ★ 134.375	ATLANTA APP CON 125.5 323.1	TOWER 119.05 (CTAF) 269.525	GND CON 121.7 254.25	CLNC DEL 121.7 251.15
--------------------------	---------------------------------------	--	--------------------------------	---------------------------------



ELEV 227	TDZE 226
Rwy 33 ldg 9302'	★ 380



CATEGORY	A	B	C	D
S-ILS 33	426/24 200 (200-½)		426/40 200 (200-¾)	
S-LOC 33	640/40 414 (500-¾)		640/50 414 (500-1)	
CIRCLING*	820-1 593 (600-1)		840-1 ¾ 613 (700-1 ¾)	880-2 653 (700-2)

FAF to MAP 4.4 NM					
Knots	60	90	120	150	180
Min:Sec	4:24	2:56	2:12	1:46	1:28

ILS or LOC RWY 33

SE-4, 22 FEB 2024 to 21 MAR 2024

SE-4, 22 FEB 2024 to 21 MAR 2024