

(CLEGG.CLEGG5) 24025
CLEGG FIVE ARRIVAL

AL-697 (FAA)

BLUE GRASS (LEX)
 LEXINGTON, KENTUCKY

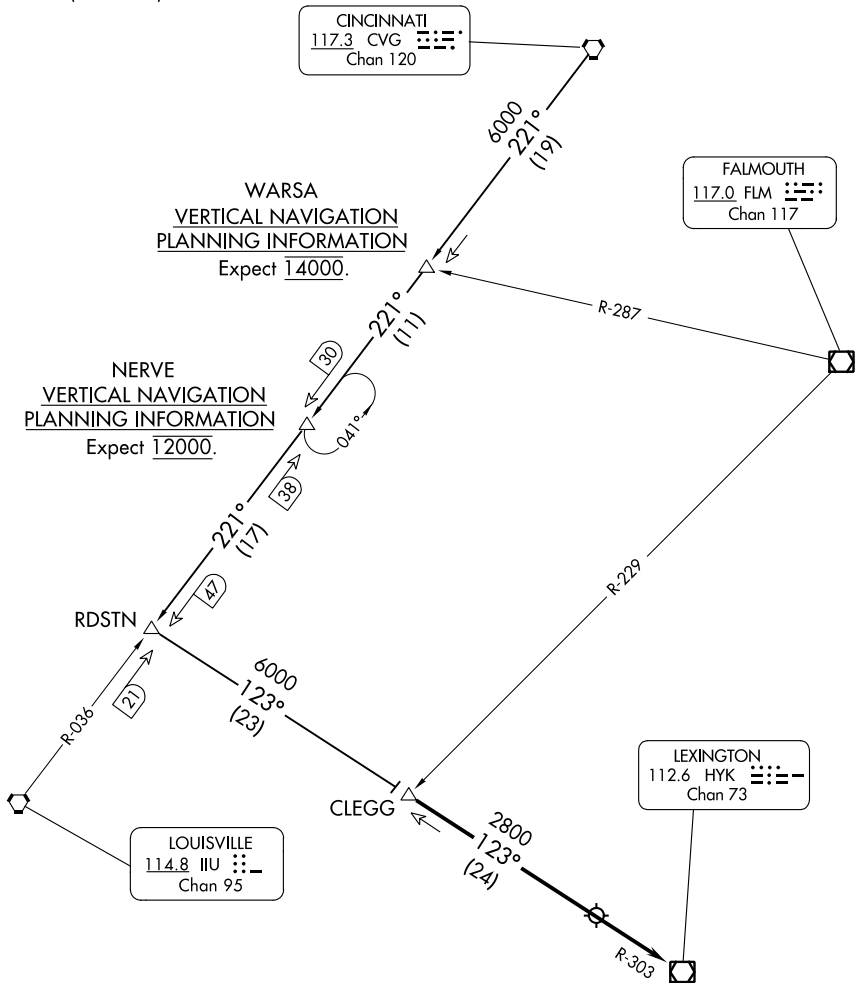
LEXINGTON APP CON
 120.15 259.3 (040°-220°)
 120.75 298.9 (221°-039°)
 ATIS
 126.3

CINCINNATI
 117.3 CVG
 Chan 120

FALMOUTH
 117.0 FLM
 Chan 117

WARSA
 VERTICAL NAVIGATION
 PLANNING INFORMATION
 Expect 14000.

NERVE
 VERTICAL NAVIGATION
 PLANNING INFORMATION
 Expect 12000.



ARRIVAL ROUTE DESCRIPTION

CINCINNATI TRANSITION (CVG.CLEGG5):
 From over CVG VORTAC on CVG R-221 to RDSTN
 then on HYK VOR/DME R-303 to CLEGG. Thence...

...from over CLEGG on HYK R-303 to HYK VOR/DME.
 Expect radar vectors to final approach course after
 CLEGG.

NOTE: RADAR required.
 NOTE: DME required.

NOTE: Chart not to scale.

CLEGG FIVE ARRIVAL
 (CLEGG.CLEGG5) 25APR19

LEXINGTON, KENTUCKY
 BLUE GRASS (LEX)

SE-1, 22 FEB 2024 to 21 MAR 2024

SE-1, 22 FEB 2024 to 21 MAR 2024