

(CHOWW.CHOWW2) 27 JAN 22

CHOWW TWO ARRIVAL (RNAV) Transition Routes

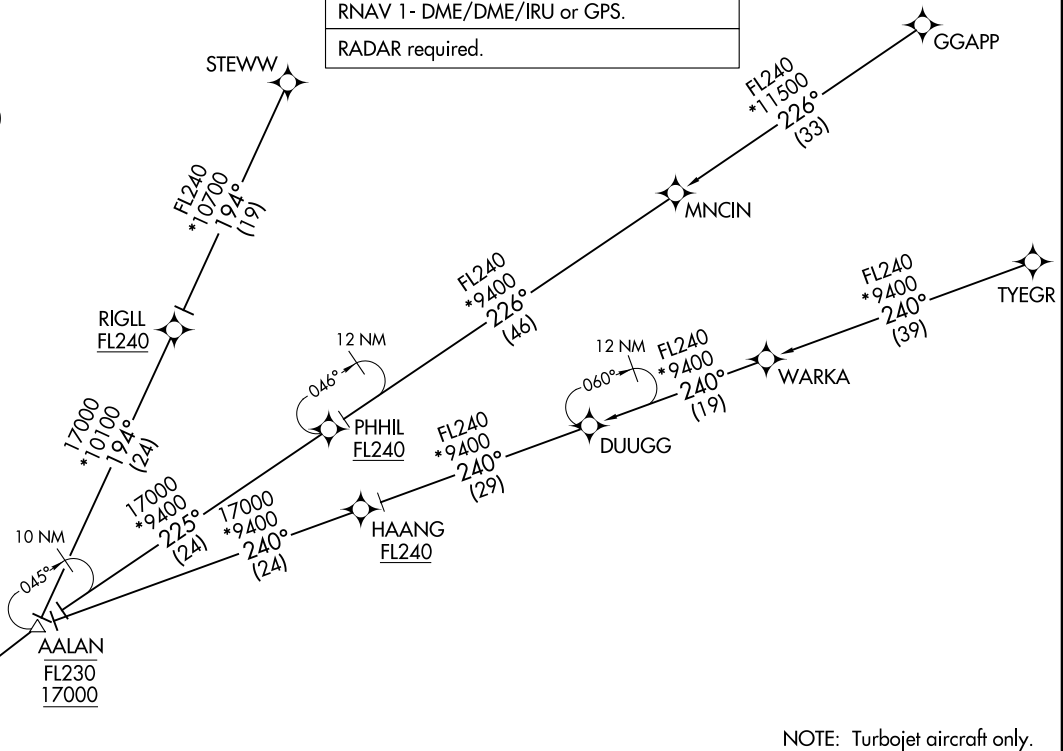
(CHOWW.CHOWW2) 22083

AL-662 (FAA)
CHOWW TWO ARRIVAL (RNAV) Transition Routes

HARRY REID INTL (LAS)
LAS VEGAS, NEVADA

LAS VEGAS APP CON
119.775 282.2
D-ATIS
132.4
LAS VEGAS TOWER
118.75 257.8 (Rwys 1L/19R, 1R/19L)
119.9 257.8 (Rwys 8L/26R, 8R/26L)

RNAV 1 - DME/DME/IRU or GPS.
RADAR required.



NOTE: Turbojet aircraft only.

GGAPP TRANSITION (GGAPP.CHOWW2)
STEWV TRANSITION (STEWV.CHOWW2)
TYEGR TRANSITION (TYEGR.CHOWW2)

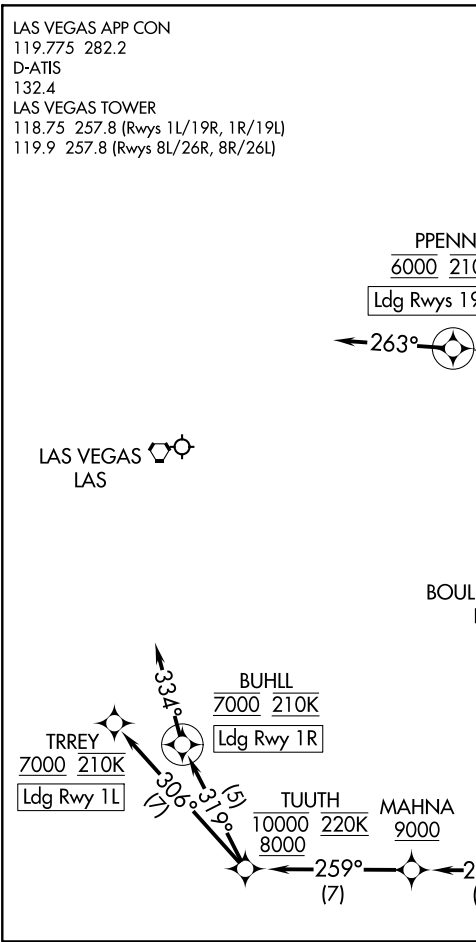
See following page for Arrival Routes

NOTE: Chart not to scale.

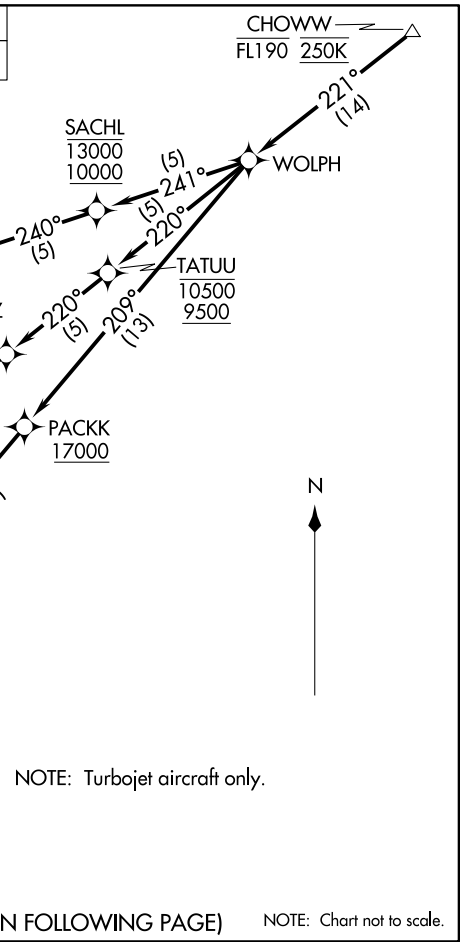
(CONTINUED ON FOLLOWING PAGE)

LAS VEGAS, NEVADA
HARRY REID INTL (LAS)

CHOWW TWO ARRIVAL (RNAV) Arrival Routes
(CHOWW.CHOWW2) 27 JAN 22



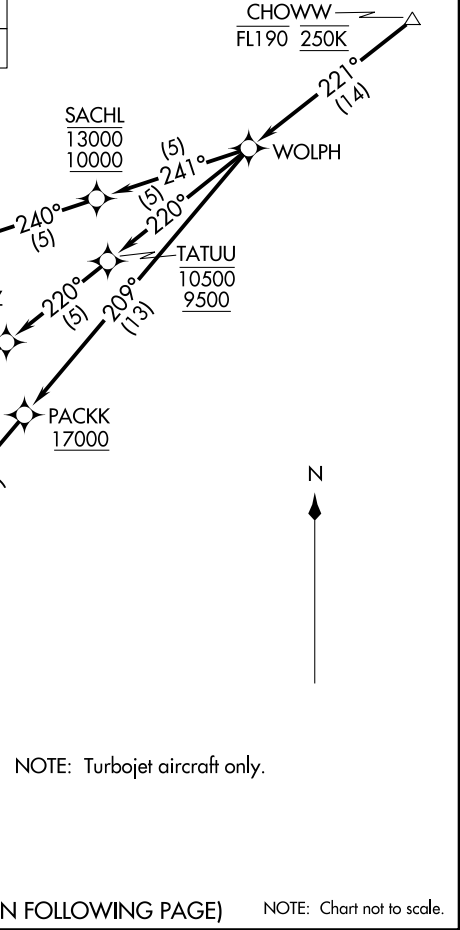
RNAV 1 - DME/DME/IRU or GPS.
RADAR required.



CHOWW.CHOWW2) 22083
A-662 (FAA)
HARRY REID INTL (LAS)
LAS VEGAS, NEVADA

LAS VEGAS APP CON
 119.775 282.2
 D-ATIS
 132.4
 LAS VEGAS TOWER
 118.75 257.8 (Rwys 1L/19R, 1R/19L)
 119.9 257.8 (Rwys 8L/26R, 8R/26L)

RNAV 1 - DME/DME/IRU or GPS.
RADAR required.



CHOWW.CHOWW2) 22083
A-662 (FAA)
HARRY REID INTL (LAS)
LAS VEGAS, NEVADA

(NARRATIVE ON FOLLOWING PAGE)

NOTE: Chart not to scale.

NOTE: Turbojet aircraft only.