

WAAS CH 40228 W16A	APP CRS 162°	Rwy Idg TDZE Apf Elev	7000 4202 4252
--	------------------------	-----------------------------	---

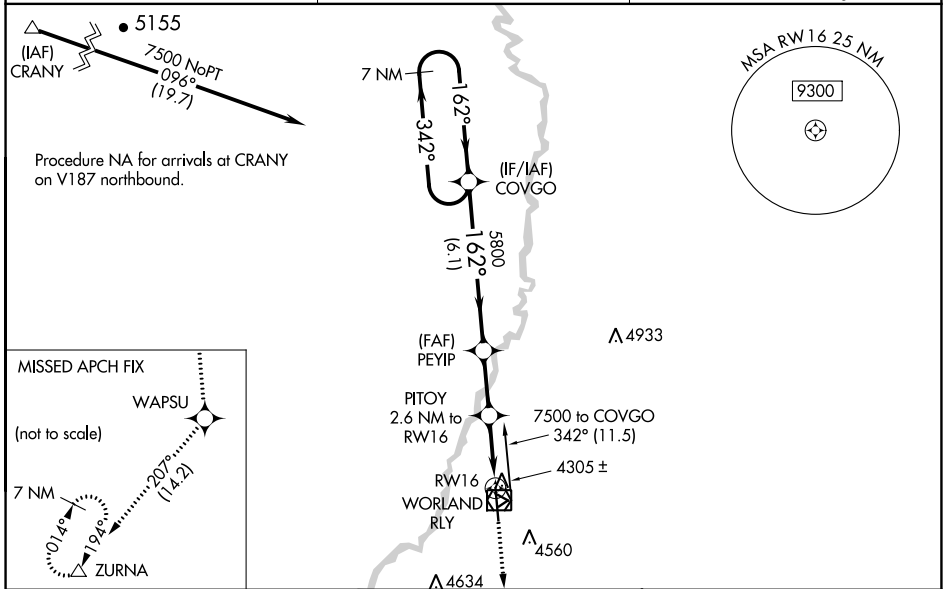
RNAV (GPS) RWY 16

WORLAND MUNI (W.R.L)

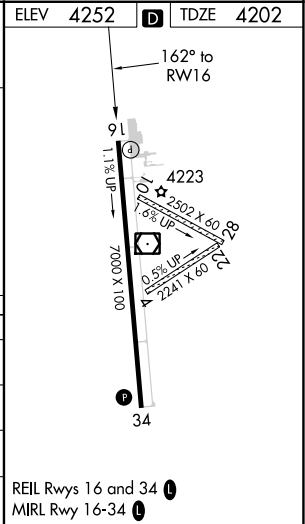
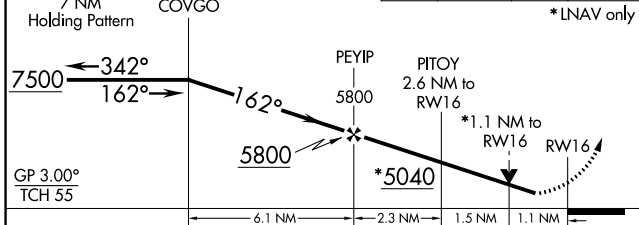
⚠ For uncompensated Baro-VNAV systems, LNAV/VNAV NA below -32°C (-25°F) or above 17°C (62°F). DME/DME RNP-0.3 NA. VDP and Baro-VNAV NA with Greybull altimeter setting. When local altimeter setting not received, use Greybull altimeter setting: increase LPV DA to 4574 feet, LNAV/VNAV DA to 4616 feet, and all MDA's 140 feet; increase LPV, LNAV/VNAV and LNAV all Cats, and Circling Cat C/D visibilities ½ SM. Helicopter visibility reduction below ¾ SM NA.

MISSED APPROACH: Climb to 9600 direct WAPSU and on track 207° to ZURNA and hold, continue climb-in-hold to 9600.

ASOS 135.475	SALT LAKE CENTER 133.25 285.6	UNICOM 123.05 (CTAF) 0
------------------------	---	----------------------------------



VGSI and RNAV glidepath not coincident (VGSI Angle 3.00/TCH 41).	9600 WAPSU	ZURNA	ELEV 4252	TDZE 4202
	↑	tr 207°		



CATEGORY	A	B	C	D
LPV DA		4452-¾	250 (200-¾)	
LNAV/VNAV DA		4494-⅞	292 (300-⅞)	
LNAV MDA	4560-1	358 (400-1)	4560-1 ⅛	358 (400-1 ⅛)
CIRCLING	4920-1	668 (700-1)	4920-1 ¾	5020-2 ½
			668 (700-1 ¾)	768 (800-2 ½)

NW-1, 22 FEB 2024 to 21 MAR 2024

NW-1, 22 FEB 2024 to 21 MAR 2024

APP CRS	Rwy Idg	7000
342°	TDZE	4252
	Apt Elev	4252

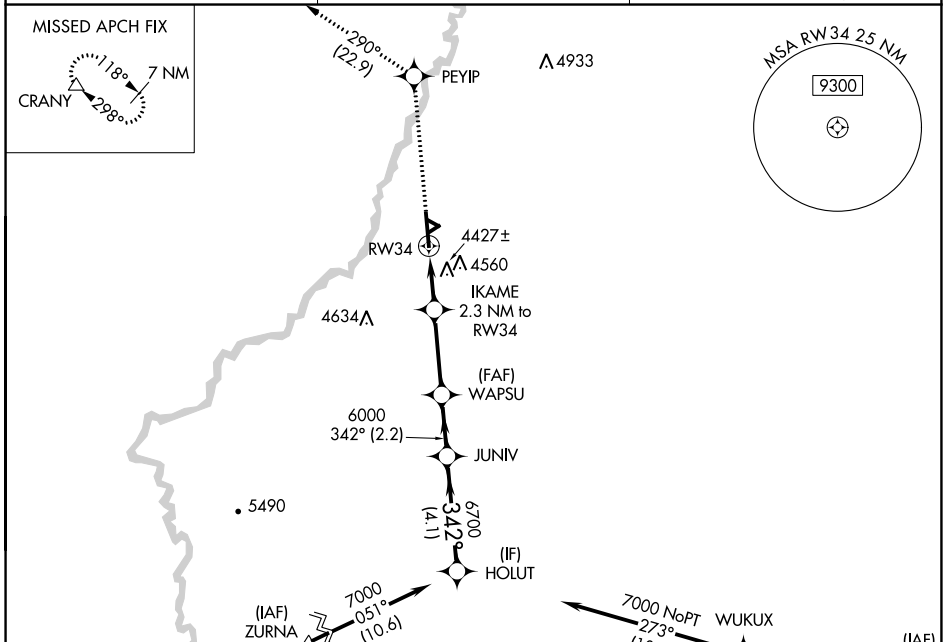
RNAV (GPS) RWY 34

WORLAND MUNI (WRL)

⚠ When local altimeter setting not received, use Greybull altimeter setting: increase all MDAs 140 feet; and LNAV all Cats, and Circling Cat C/D visibilities ½ SM. DME/DME RNP-0.3 NA. Helicopter visibility reduction below ¾ SM NA.

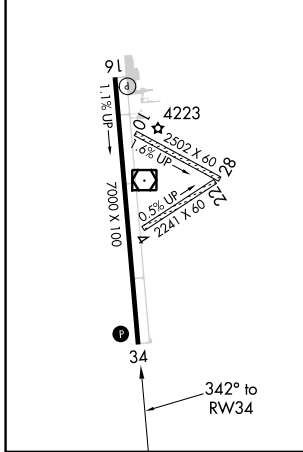
MISSSED APPROACH: Climb to 8500 direct PEYIP and on track 290° to CRANY and hold.

ASOS 135.475	SALT LAKE CENTER 133.25 285.6	UNICOM 123.05 (CTAF)
------------------------	---	--------------------------------

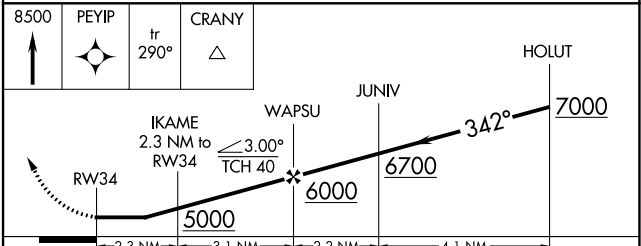


ELEV 4252	D	TDZE 4252
-----------	----------	-----------

REIL Rwy 16 and 34 **⚠**
MIRL Rwy 16-34 **⚠**



Procedure NA for arrivals at ZURNA on V319 southbound and at JIIP on V401 eastbound.



CATEGORY	A	B	C	D
LNAV MDA	4680-1	428 (500-1)	4680-1¼	428 (500-1¼)
CIRCLING	4920-1	668 (700-1)	4920-1¾ 668 (700-1¾)	5020-2½ 768 (800-2½)

NW-1, 22 FEB 2024 to 21 MAR 2024

NW-1, 22 FEB 2024 to 21 MAR 2024

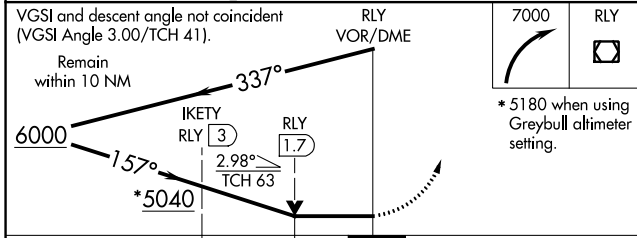
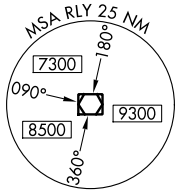
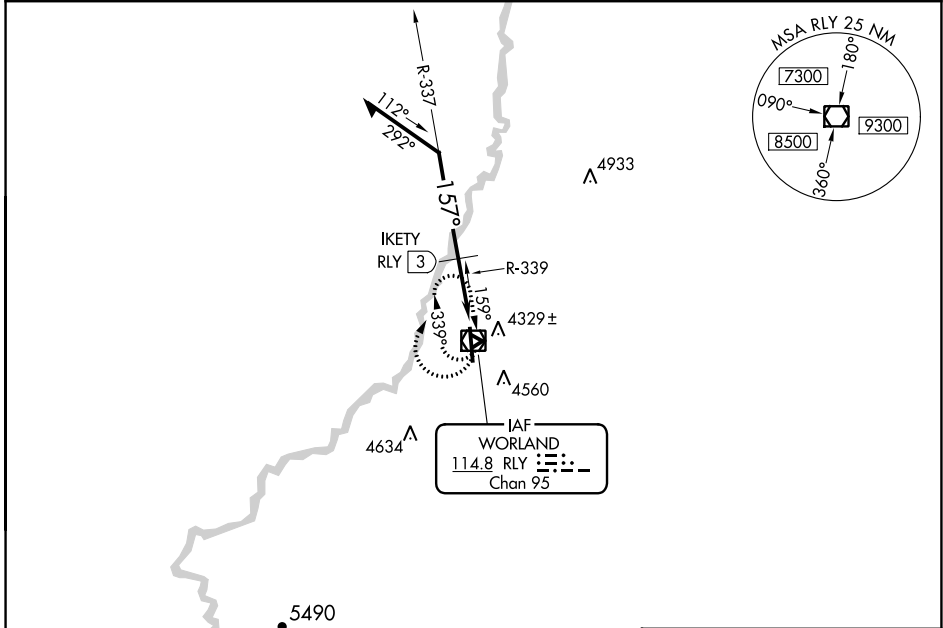
VOR/DME RLY 114.8 Chan 95	APP CRS 157°	Rwy Idg 7000 TDZE 4202 Apt Elev 4252
---	------------------------	---

VOR RWY 16
WORLAND MUNI (W.R.L.)

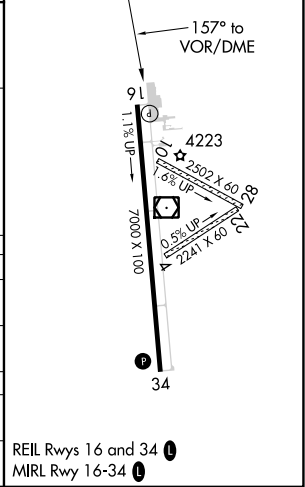
⚠ When local altimeter setting not received, use Greybull altimeter setting: increase all MDAs 140 feet; all Cats, and Circling Cat C/D visibilities ½ SM. Helicopter visibility reduction below ¾ SM NA. VDP NA with Greybull altimeter setting.

MISSED APPROACH: Climbing right turn to 7000 in RLY VOR/DME holding pattern.

ASOS 135.475	SALT LAKE CENTER 133.25 285.6	UNICOM 123.05 (CTAF)
------------------------	---	--------------------------------



ELEV 4252	D TDZE 4202
-----------	--------------------



CATEGORY	A	B	C	D
S-16	5040-1 838 (800-1)	5040-1¼ 838 (800-1¼)	5040-2½	838 (800-2½)
CIRCLING	5040-1 788 (800-1)	5040-1¼ 788 (800-1¼)	5040-2½	788 (800-2½)
IKETY FIX MINIMUMS				
S-16	4600-1	398 (400-1)	4600-1¼	398 (400-1¼)
CIRCLING	4920-1	668 (700-1)	4920-1¾ 668 (700-1¾)	5020-2½ 768 (800-2½)

NW-1, 22 FEB 2024 to 21 MAR 2024

NW-1, 22 FEB 2024 to 21 MAR 2024