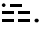


JACKSONVILLE APP CON  
127.0 269.9  
CECIL ATIS  
125.275  
CRAIG MUNI ATIS  
125.4  
JACKSONVILLE INTL D-ATIS  
125.85  
JACKSONVILLE NAS ATIS  
290.425  
MAYPORT NS ATIS★  
236.775

ALMA  
115.1 AMG   
Chan 98  
N31°32.19'-W82°30.49'  
L-24, H-9-12

OHDEA  
N30°59.22'-W82°14.14'  
TURBOJET VERTICAL NAVIGATION  
PLANNING INFORMATION

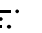
Expect 12000.

10000  
157°  
(136)

8000  
139°  
(54)

JACKSONVILLE INTL

MAYPORT NS  
(ADM DAVID L MCDONALD FIELD)

CRAIG  
114.5 CRG   
Chan 92  
N30°20.33'-W81°30.60'

JACKSONVILLE EXECUTIVE AT CRAIG

CECIL

JACKSONVILLE NAS (TOWERS FIELD)

R-319

NOTE: DME required.

NOTE: Chart not to scale.

### ARRIVAL DESCRIPTION

From over ALMA VORTAC via AMG R-157 to OHDEA INT, then via CRG R-319 to CRG VORTAC. Expect radar vectors to final approach course.

SE-3, 26 MAR 2020 to 23 APR 2020

SE-3, 26 MAR 2020 to 23 APR 2020

# HOTAR ONE ARRIVAL (RNAV)

JACKSONVILLE, FLORIDA

JACKSONVILLE APP CON  
 119.0 127.0 269.9 292.15 (270°-090°)  
 127.775 377.075 (181°-269°)  
 124.9 308.4 (091°-180°)  
 CECIL ATIS 125.275  
 JACKSONVILLE EXECUTIVE AT CRAIG ATIS 125.4  
 JACKSONVILLE INTL D-ATIS 125.85  
 JACKSONVILLE NAS (TOWERS FIELD) ATIS 290.425  
 MAYPORT NS (ADM DAVID L MCDONALD FIELD) ATIS \* 236.775  
 NORTHEAST FLORIDA RGNL ATIS 119.625

## ARRIVAL ROUTE DESCRIPTION

### BASLE TRANSITION (BASLE.HOTAR1)

From JABOR on track 191° to HOTAR.

LANDING JAX: From HOTAR on track 263° to YEJWO.

Expect radar vectors to an ILS or LOC final approach course.

LANDING NRB and CRG: From HOTAR on track 210° to LESVE, then on 213° heading or as assigned by ATC.

Expect radar vectors to final approach course.

LANDING SGJ: From HOTAR on track 202° to HABIK, then on 203° heading or as assigned by ATC. Expect radar vectors to final approach course.

LANDING VQQ and NIP: From HOTAR on track 202° to HEBIN, then on 253° heading or as assigned by ATC.

Expect radar vectors to final approach course.

NOTE: YEJWO Transition-ATC assigned only.

JACKSONVILLE INTL

MAYPORT NS  
(ADM DAVID L MCDONALD FIELD)

JACKSONVILLE EXECUTIVE  
AT CRAIG

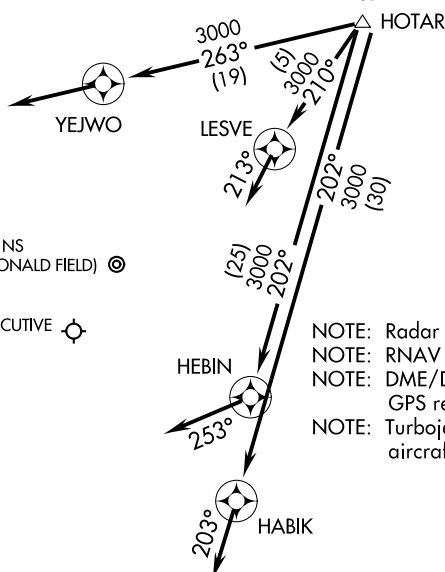
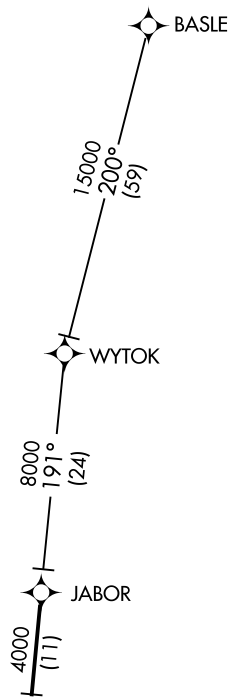
JACKSONVILLE NAS  
(TOWERS FIELD)

CECIL

NORTHEAST FLORIDA  
RGNL

- NOTE: Radar required.
- NOTE: RNAV 1.
- NOTE: DME/DME/IRU or GPS required.
- NOTE: Turbojet and turboprop aircraft only.

NOTE: Chart not to scale.



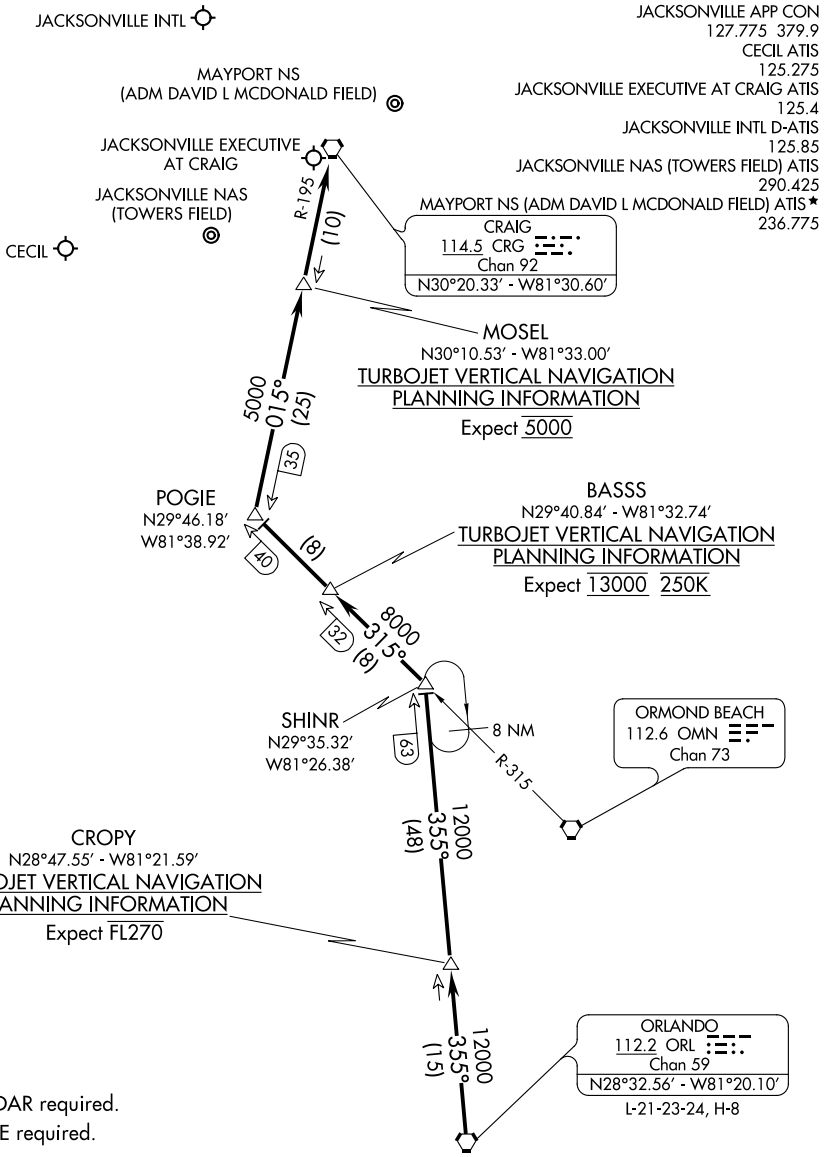
SE-3, 26 MAR 2020 to 23 APR 2020

SE-3, 26 MAR 2020 to 23 APR 2020

# HOTAR ONE ARRIVAL (RNAV)

(HOTAR.HOTAR1) 17OCT13

JACKSONVILLE, FLORIDA



NOTE: RADAR required.  
 NOTE: DME required.  
 NOTE: Chart not to scale.

From over ORL VORTAC on ORL R-355 to SHINR, then on OMN R-315 to POGIE, then on CRG R-195 to CRG VORTAC. Expect RADAR vectors to final approach course after CRG VORTAC.

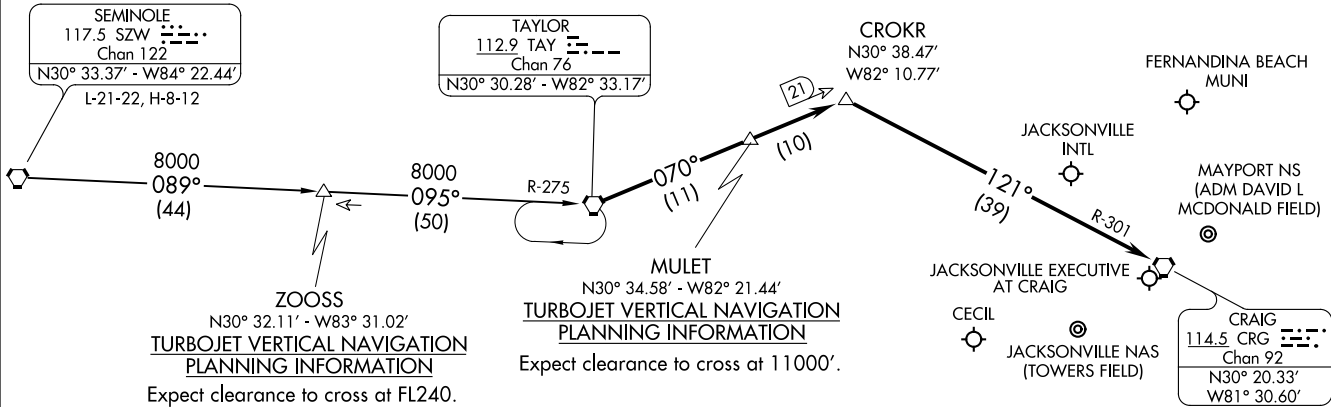
SE-3, 26 MAR 2020 to 23 APR 2020

SE-3, 26 MAR 2020 to 23 APR 2020

**SEMINOLE TRANSITION (SZW.TAY2):** From over SZW VORTAC via SZW R-089 and TAY R-275 to TAY VORTAC. Thence. . . .

. . . .From over TAY VORTAC via TAY R-070 to CROKR INT, thence to the CRG VORTAC via CRG R-301. Expect radar vectors to final approach course after CROKR INT.

- JACKSONVILLE APP CON 127.0 292.15
- CECIL ATIS 125.275
- CRAIG MUNI ATIS 125.4
- JACKSONVILLE INTL D-ATIS 125.85
- JACKSONVILLE NAS ATIS 290.425
- MAYPORT NS ATIS ★ 236.775
- FERNANDINA BEACH AWOS-3 118.075



**TURBOJET VERTICAL NAVIGATION PLANNING INFORMATION**  
Expect clearance to cross at FL240.

**TURBOJET VERTICAL NAVIGATION PLANNING INFORMATION**  
Expect clearance to cross at 11000\''.

NOTE: DME Required.  
NOTE: Chart not to scale.

TAYLOR TWO ARRIVAL  
(TAY.TAY2) 25NOV04

JACKSONVILLE, FLORIDA

(TAY.TAY2) 20086  
TAYLOR TWO ARRIVAL

AL-5570 (FAA)

JACKSONVILLE, FLORIDA