

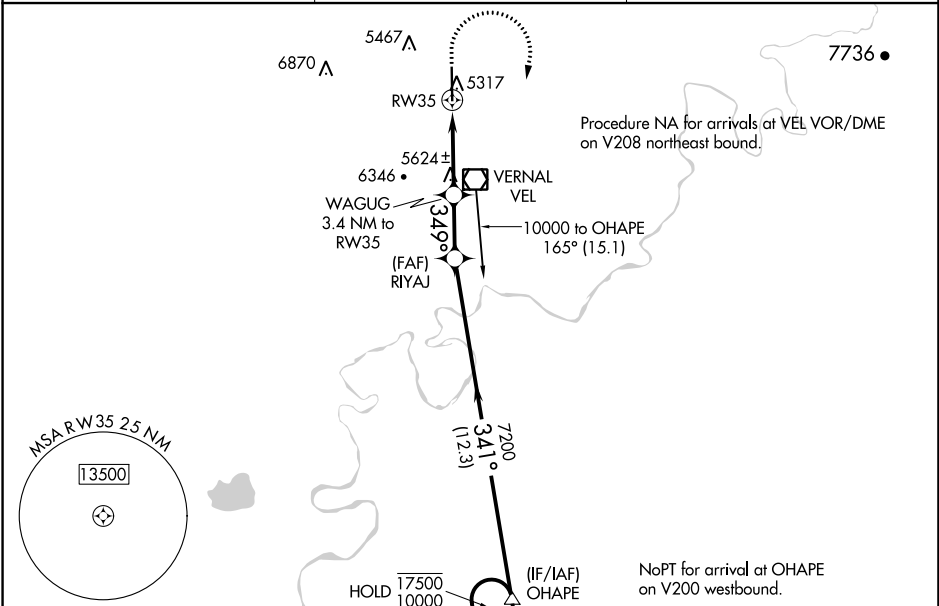
# RNAV (GPS) Y RWY 35

VERNAL RGNL (VEL)

APP CRS	Rwy Idg	<b>7000</b>
<b>349°</b>	TDZE	<b>5274</b>
	Apt Elev	<b>5274</b>

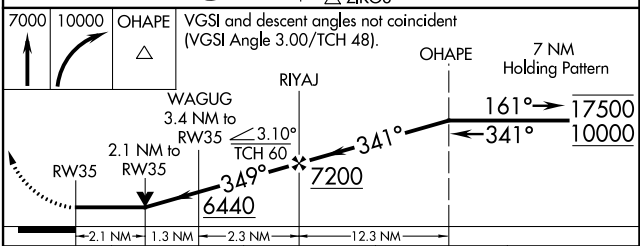
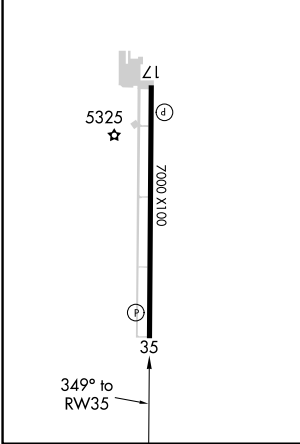
RNP APCH.	MISSED APPROACH: Climb to 7000 then climbing right turn to 10000 direct OHAPE and hold. *Missed approach requires minimum climb of 300 feet per NM to 7500.
<p>⚠ Circling NA west of Rwy 17-35. Rwy 35 helicopter visibility reduction below ¾ NA.</p>	

ASOS <b>118.125</b>	SALT LAKE CENTER <b>119.95 377.15</b>	UNICOM <b>122.7 (CTAF)</b>
------------------------	------------------------------------------	-------------------------------



ELEV 5274	<b>D</b> TDZE 5274
-----------	--------------------

REIL Rws 17 and 35  
MIRL Rwy 17-35



CATEGORY	A	B	C	D
LNAV MDA*	5980-1	706 (800-1)	5980-2	706 (800-2)
LNAV MDA	6380-1½ 1106 (1200-1½)	6380-1½ 1106 (1200-1½)	6380-3	1106 (1200-3)
<b>C</b> CIRCLING	6380-1½ 1106 (1200-1½)	6380-1½ 1106 (1200-1½)	6380-3	6400-3 1126 (1200-3)

# RNAV (GPS) Y RWY 35

SW-4, 09 SEP 2021 to 07 OCT 2021

SW-4, 09 SEP 2021 to 07 OCT 2021

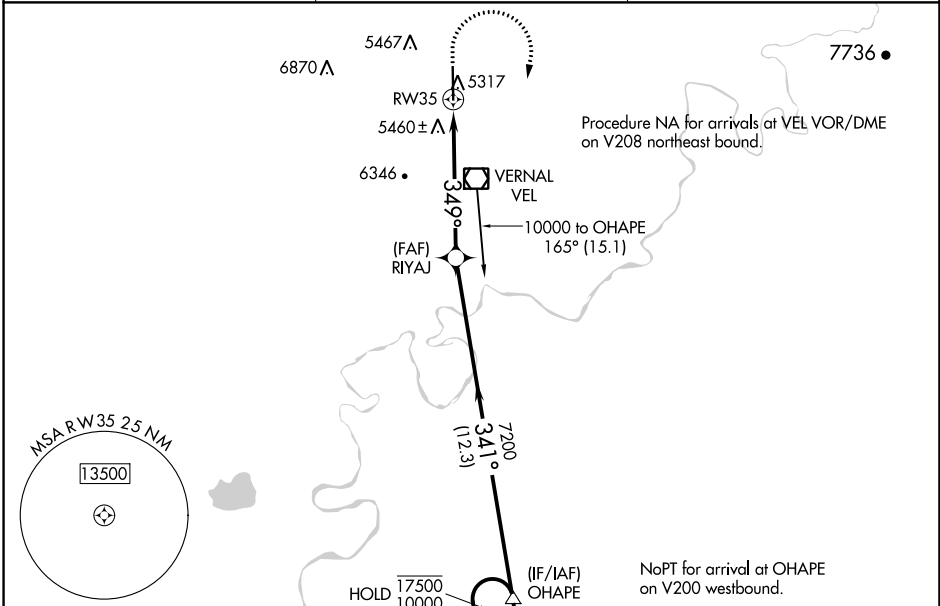
WAAS CH <b>90241</b> <b>W35A</b>	APP CRS <b>349°</b>	Rwy Idg TDZE Apt Elev	<b>7000</b> <b>5274</b> <b>5274</b>
----------------------------------------	------------------------	-----------------------------	-------------------------------------------

# RNAV (GPS) Z RWY 35

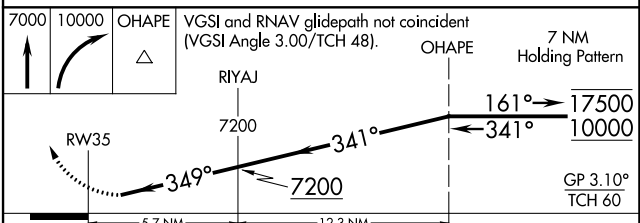
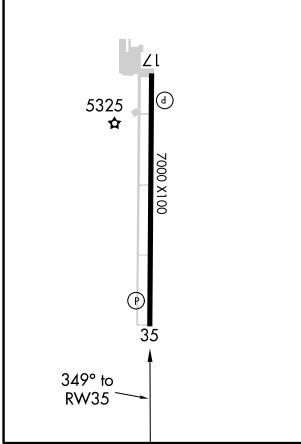
VERNAL RGNL (VEL)

RNP APCH.	MISSED APPROACH: Climb to 7000 then climbing right turn to 10000 direct OHAPE and hold. *Missed approach requires minimum climb of 290 feet per NM to 8600.
<p>▼ Rwy 35 helicopter visibility reduction below ¼ SM NA.</p> <p>▲ For uncompensated Baro-VNAV systems, procedure NA below -21°C or above 54°C.</p>	

ASOS <b>118.125</b>	SALT LAKE CENTER <b>119.95 377.15</b>	UNICOM <b>122.7 (CTAF)</b>
------------------------	------------------------------------------	-------------------------------



ELEV <b>5274</b>	<b>D</b> TDZE <b>5274</b>
REIL Rws 17 and 35	
MIRL Rwy 17-35	



CATEGORY	A	B	C	D
LPV DA*	5610-1 336 (400-1)			
LPV DA	6175-2½ 901 (1000-2½)			
INAV/VNAV DA*	5786-1⅜ 512 (600-1⅜)			
INAV/VNAV DA	6093-2½ 819 (900-2½)			

SW-4, 09 SEP 2021 to 07 OCT 2021

SW-4, 09 SEP 2021 to 07 OCT 2021

VOR/DME VEL <b>108.2</b> Chan 19	APP CRS <b>329°</b>	Rwy ldg TDZE Apt Elev <b>7000</b> <b>5274</b> <b>5274</b>
----------------------------------------	------------------------	--------------------------------------------------------------------------

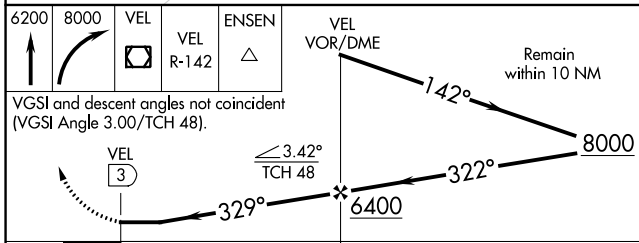
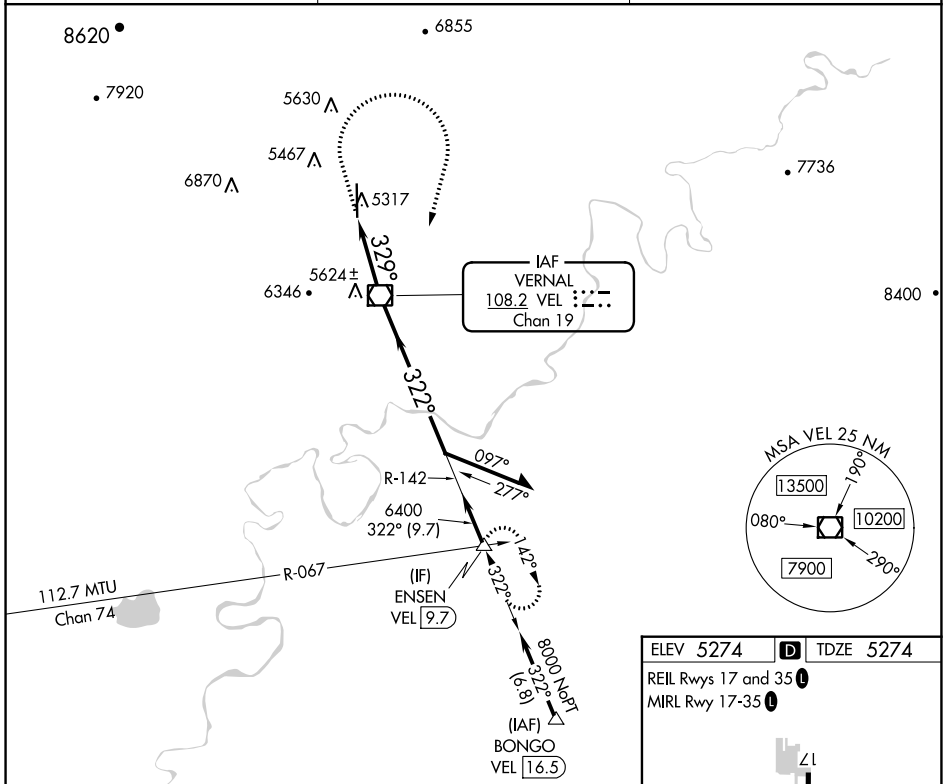
# VOR RWY 35

VERNAL RGNL (VEL)

**⚠** Circling NA west of Rwy 17-35.  
Rwy 35 helicopter visibility reduction below ¼ NA.

**⚠** MISSED APPROACH: Climb to 6200 then climbing right turn to 8000 direct VEL VOR/DME and on VEL VOR/DME R-142 to ENSEN INT/9.7 DME and hold.

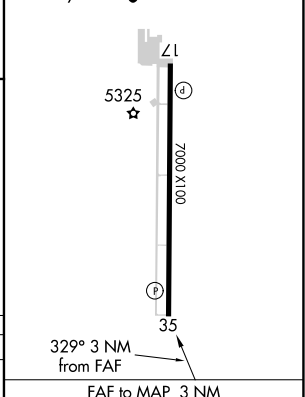
ASOS <b>118.125</b>	SALT LAKE CENTER <b>119.95 377.15</b>	UNICOM <b>122.7 (CTAF)</b>
------------------------	------------------------------------------	-------------------------------



ELEV 5274 **D** TDZE 5274

REIL Rws 17 and 35 **L**

MIRL Rwy 17-35 **L**



CATEGORY	A	B	C	D
S-35	6160-1¼	886 (900-1¼)	6160-2½	886 (900-2½)
<b>C</b> CIRCLING	6160-1¼	886 (900-1¼)	6160-2¾ 886 (900-2¾)	6400-3 1126 (1200-3)

Knots	60	90	120	150	180
Min:Sec	3:00	2:00	1:30	1:12	1:00

SW-4, 09 SEP 2021 to 07 OCT 2021

SW-4, 09 SEP 2021 to 07 OCT 2021