


LOC/DME I- <u>UZA</u>	APP CRS	Rwy ldg	5500
<u>108.5</u>	<u>016°</u>	TDZE	666
Chan <u>22</u>		Apt Elev	666

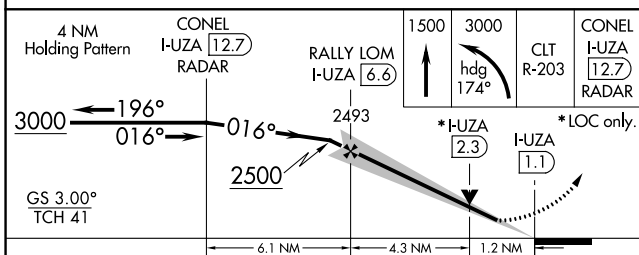
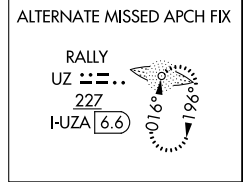
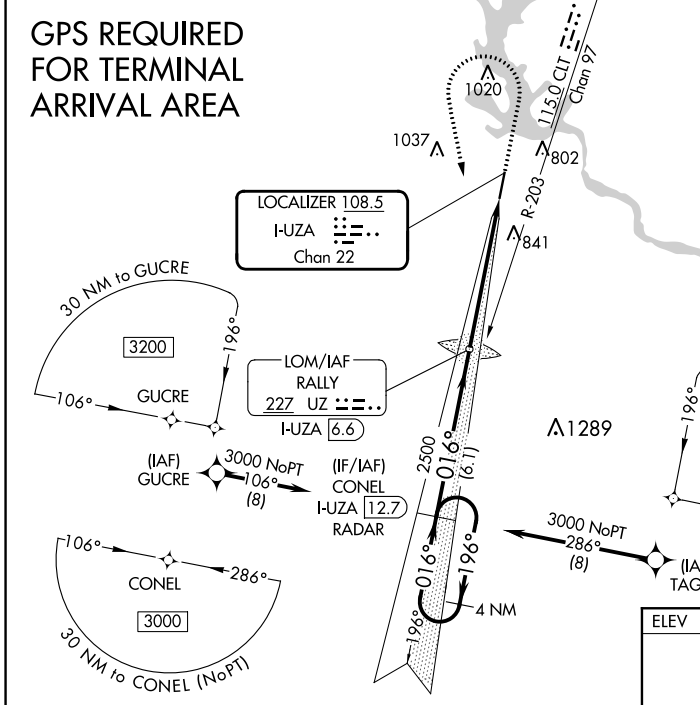
ILS Y or LOC Y RWY 2

ROCK HILL/YORK COUNTY/BRYANT FLD (UZA)

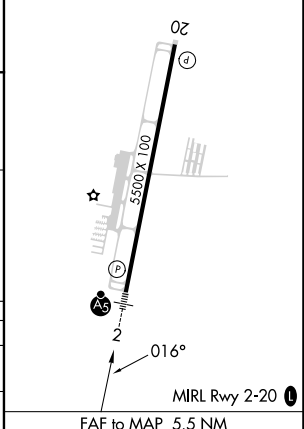
NA ADF or DME required. VDP NA with Charlotte/Douglas Intl altimeter setting. When local altimeter setting not received, use Charlotte/Douglas Intl altimeter setting and increase all DA 45 feet and all MDA 60 feet. Increase S-LOC 2 Cat C/D visibility ¼ mile. For inop MALSR, increase S-LOC 2 Cat C/D visibility to 1½ mile. For inop MALSR, when using Charlotte/Douglas Intl altimeter setting, increase S-LOC 2 Cat C/D visibility to 1½ mile.

MALSR  MISSED APPROACH: Climb to 1500 then climbing left turn to 3000 on heading 174° and CLT VOR/DME R-203 to CONEL/I-UZA 12.7 DME/RADAR and hold.

ASOS 120.775	CHARLOTTE APP CON 120.05 307.8	GCO 121.725	UNICOM 123.05 (CTAF) 0
------------------------	--	-----------------------	----------------------------------



ELEV 666	TDZE 666
----------	----------



CATEGORY	A	B	C	D
S-ILS 2	866-½		200 (200-½)	
S-LOC 2	1080-½	414 (500-½)	1080-¾	414 (500-¾)
CIRCLING	1140-1 474 (500-1)	1160-1 494 (500-1)	1340-2 674 (700-2)	1340-2¼ 674 (700-2¼)

FAF to MAP 5.5 NM					
Knots	60	90	120	150	180
Min:Sec	5:30	3:40	2:45	2:12	1:50

SE-2, 22 FEB 2024 to 21 MAR 2024

SE-2, 22 FEB 2024 to 21 MAR 2024

LOC/DME I- UZA	APP CRS	Rwy Idg	5500
108.5	016°	TDZE	666
Chan 22		Apt Elev	666

ILS Z or LOC Z RWY 2

ROCK HILL/YORK COUNTY/BRYANT FLD (UZA)

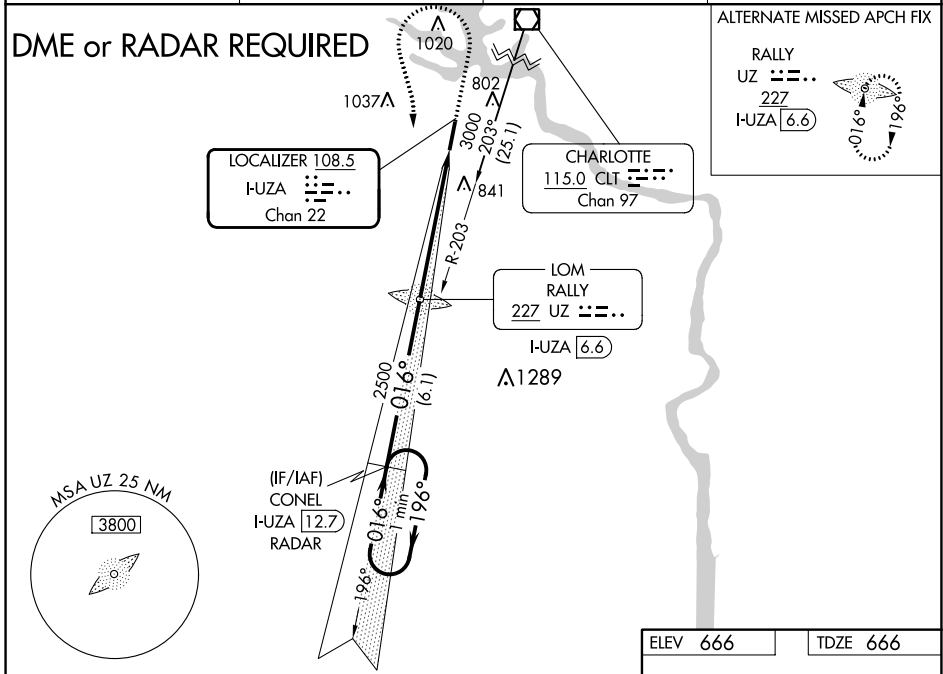
NA ADF or DME required. VDP NA with Charlotte/Douglas Intl altimeter setting. When local altimeter setting not received, use Charlotte/Douglas Intl altimeter setting and increase all DA 45 feet and all MDA 60 feet. Increase S-LOC 2 Cat C/D visibility 1/4 mile. For inop MALSRL, increase S-LOC 2 Cat C/D visibility to 1 1/8 mile. For inop MALSRL, when using Charlotte/Douglas Intl altimeter setting, increase S-LOC 2 Cat C/D visibility to 1 1/8 mile.

MALSRL



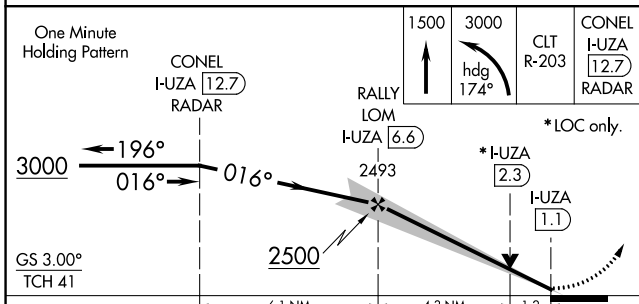
MISSED APPROACH: Climb to 1500 then climbing left turn to 3000 on heading 174° and CLT VOR/DME R-203 to CONEL/I-**UZA** 12.7 DME/RADAR and hold.

ASOS 120.775	CHARLOTTE APP CON 120.05 307.8	GCO 121.725	UNICOM 123.05 (CTAF) 1
------------------------	--	-----------------------	---

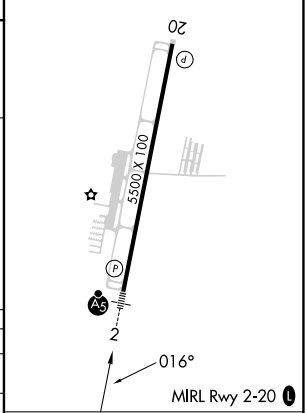


ALTERNATE MISSED APCH FIX

RALLY
UZ 227
I-**UZA** 6.6



ELEV 666	TDZE 666
----------	----------



CATEGORY	A	B	C	D
S-ILS 2		866-1/2	200 (200-1/2)	
S-LOC 2	1080-1/2	414 (500-1/2)	1080-3/4	414 (500-3/4)
C CIRCLING	1140-1 474 (500-1)	1160-1 494 (500-1)	1340-2 674 (700-2)	1340-2 1/4 674 (700-2 1/4)

FAF to MAP 5.5 NM					
Knots	60	90	120	150	180
Min:Sec	5:30	3:40	2:45	2:12	1:50


SE-2, 22 FEB 2024 to 21 MAR 2024

SE-2, 22 FEB 2024 to 21 MAR 2024

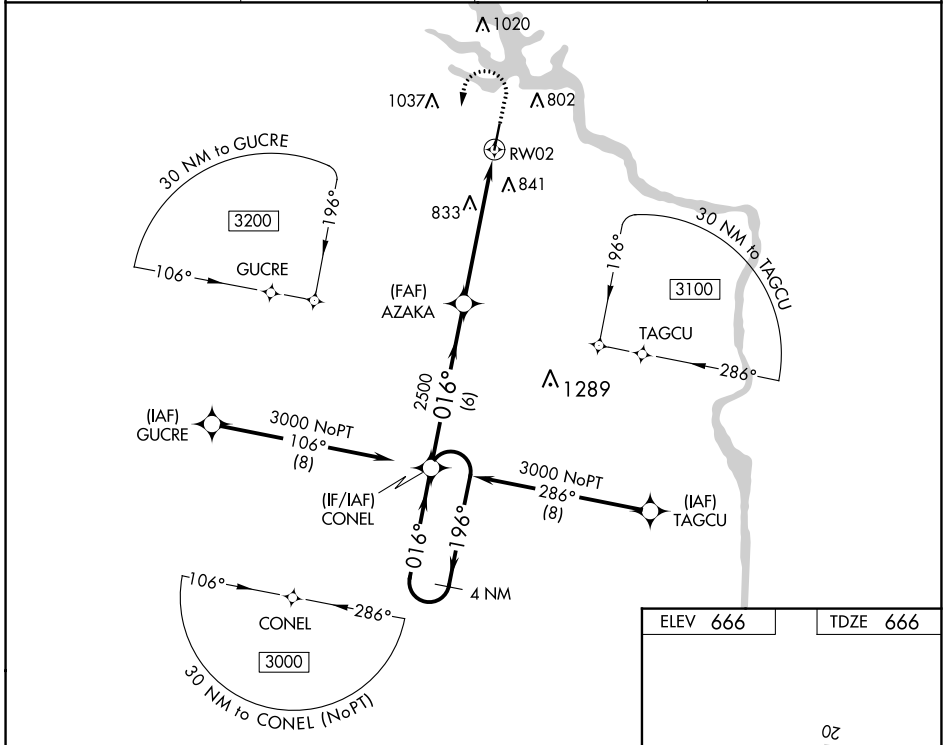
WAAS CH 70425 W02A	APP CRS 016°	Rwy ldg 5500 TDZE 666 Apt Elev 666
--	------------------------	---

RNAV (GPS) RWY 2

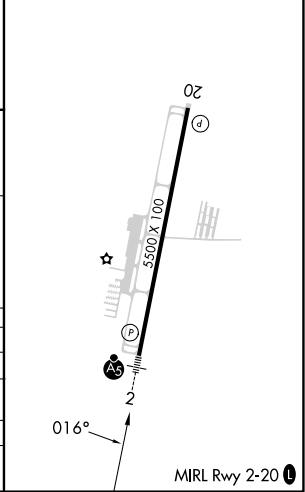
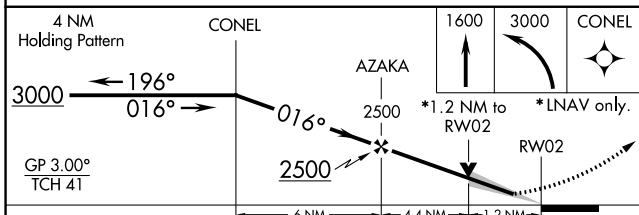
ROCK HILL/YORK COUNTY/BRYANT FLD (UZA)

<p>⚠ Baro-VNAV and VDP NA when using Charlotte/Douglas Intl altimeter setting. For uncompensated Baro-VNAV systems, LNAV/VNAV NA below -9°C (16°F) or above 54°C (130°F). DME/DME RNP-0.3 NA. When local altimeter setting not received, use Charlotte/Douglas Intl altimeter setting and increase all DA 45 feet and all MDA 60 feet. Increase LNAV/VNAV all Cats visibility 1/8 mile and LNAV Cat C/D visibility 1/4 mile.</p>	<p>MALSR</p> 	<p>MISSED APPROACH: Climb to 1600 then climbing left turn to 3000 direct CONEL and hold.</p>
---	--	---

ASOS 120.775	CHARLOTTE APP CON 120.05 307.8	GCO 121.725	UNICOM 123.05 (CTAF) 0
------------------------	--	-----------------------	----------------------------------



ELEV 666	TDZE 666
----------	----------



CATEGORY	A	B	C	D
LPV DA	866-1/2 200 (200-1/2)			
LNAV/VNAV DA	1022-3/4 356 (400-3/4)			
LNAV MDA	1100-1/2	434 (500-1/2)	1100-3/4	434 (500-3/4)
C CIRCLING	1140-1 474 (500-1)	1160-1 494 (500-1)	1340-2 674 (700-2)	1340-2 1/4 674 (700-2 1/4)

SE-2, 22 FEB 2024 to 21 MAR 2024

SE-2, 22 FEB 2024 to 21 MAR 2024

WAAS CH 90325 W20A	APP CRS 196°	Rwy Idg TDZE Apt Elev	5500 662 666
--	------------------------	-----------------------------	---

RNAV (GPS) RWY 20

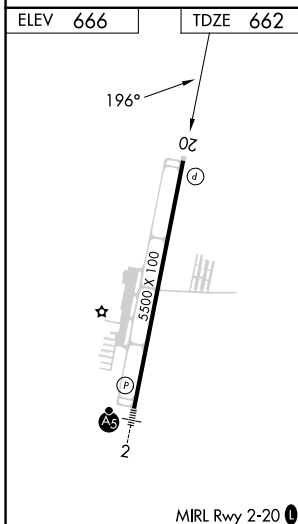
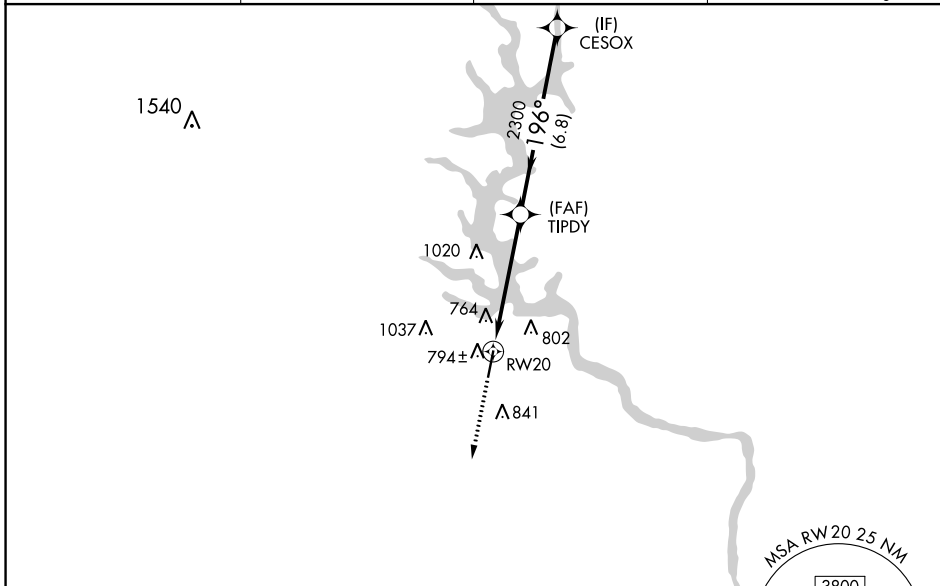
ROCK HILL/YORK COUNTY/BRYANT FLD (UZA)

RNP APCH-GPS.

⚠ For uncompensated Baro-VNAV systems, procedure NA below -16°C or above 39°C.
⚠ When local altimeter setting not received, use Charlotte/Douglas Intl altimeter setting and increase LPV DA to 957 feet, LNAV/VNAV DA to 1084 feet, and all MDAs 60 feet; increase LPV visibility all Cats 1/8 SM, LNAV/VNAV visibility all Cats 1/4 SM, and LNAV visibility Cat C/D 1/4 SM. VDP and Baro-VNAV NA when using Charlotte/Douglas Intl altimeter setting. Rwy 20 helicopter visibility reduction below 3/4 SM NA.

MISSED APPROACH: Climb to 3000 direct CONEL and hold.

ASOS 120.775	CHARLOTTE APP CON 120.05 307.8	GCO 121.725	UNICOM 123.05 (CTAF) 0
------------------------	--	-----------------------	----------------------------------



ELEV 666	TDZE 662	MISSED APCH FIX																			
		CONEL 196° 4 NM																			
		3000 CONEL																			
		*INAV only. *1.1 NM to RW20																			
		<table border="1"> <tr> <td></td> <td>TIPDY 2300</td> <td colspan="2">CESOX 2300</td> </tr> <tr> <td></td> <td>196°</td> <td colspan="2">196°</td> </tr> <tr> <td></td> <td>2300</td> <td colspan="2">2300</td> </tr> <tr> <td></td> <td>1.1 NM</td> <td>3.9 NM</td> <td>6.8 NM</td> </tr> </table>					TIPDY 2300	CESOX 2300			196°	196°			2300	2300			1.1 NM	3.9 NM	6.8 NM
	TIPDY 2300	CESOX 2300																			
	196°	196°																			
	2300	2300																			
	1.1 NM	3.9 NM	6.8 NM																		
		GP 3.00° TCH 40																			
		MIRL Rwy 2-20																			
CATEGORY	A	B	C	D																	
LPV DA	912-3/4		250 (300-3/4)																		
LNAV/VNAV DA	1039-1 377 (400-1)																				
LNAV MDA	1060-1 398 (400-1)		1060-1/8 398 (400-1/8)																		
CIRCLING	1140-1 474 (500-1)	1160-1 494 (500-1)	1340-2 674 (700-2)	1340-2 1/4 674 (700-2 1/4)																	

SE-2, 22 FEB 2024 to 21 MAR 2024

SE-2, 22 FEB 2024 to 21 MAR 2024