

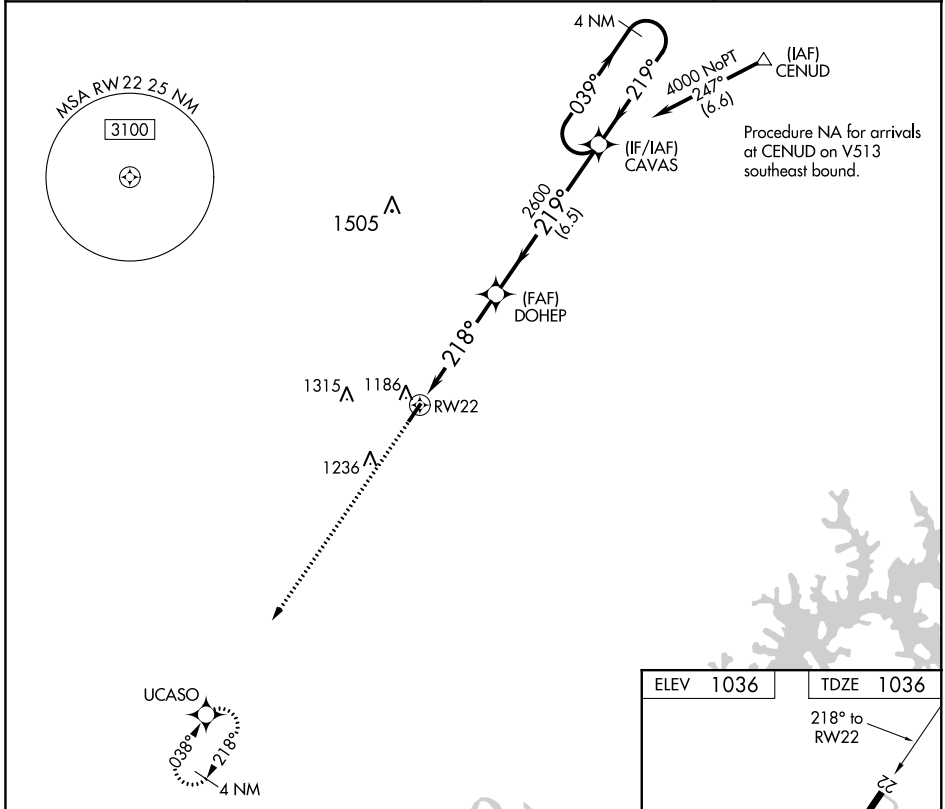
WAAS CH <b>58031</b> <b>W22A</b>	APP CRS <b>218°</b>	Rwy Idg TDZE Apt Elev	<b>4000</b> <b>1036</b> <b>1036</b>
--	------------------------	-----------------------------	---

# RNAV (GPS) RWY 22

TOMPKINSVILLE-MONROE COUNTY (T'ZV)

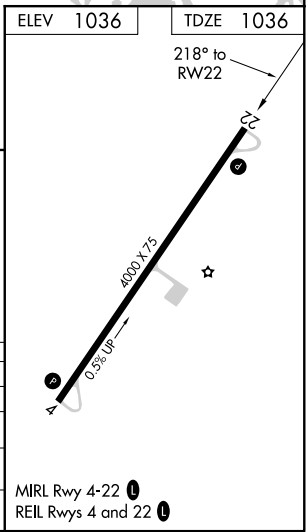
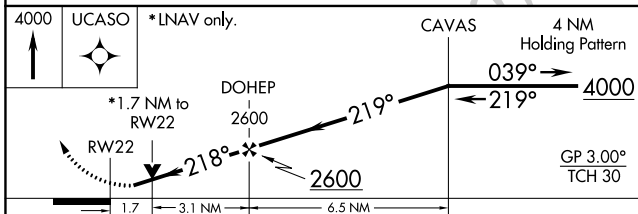
**NA** Baro-VNAV NA. DME/DME RNP-0.3 NA. Helicopter visibility reduction below ¼ SM NA. Use Glasgow altimeter setting. Night landing: Rwy 4 NA. MISSED APPROACH: Climb to 4000 direct to UCASO and hold.

AWOS-AV <b>123.050</b>	GLASGOW MUNI AWOS-3 <b>118.525</b>	MEMPHIS CENTER <b>132.9 263.1</b>	UNICOM <b>123.05 (CTAF) 0</b>
---------------------------	---------------------------------------	--------------------------------------	----------------------------------



SE-1, 15 AUG 2019 to 12 SEP 2019

SE-1, 15 AUG 2019 to 12 SEP 2019



CATEGORY	A	B	C	D
LPV DA	1385-1¼	349 (400-1¼)		NA
LNAV/VNAV DA	1593-2	557 (600-2)		NA
LNAV MDA	1620-1	584 (600-1)	1620-1¾ 584 (600-1¾)	NA
<b>C</b> CIRCLING	1640-1 604 (700-1)	1800-1 764 (800-1)	1840-2¼ 804 (900-2¼)	NA

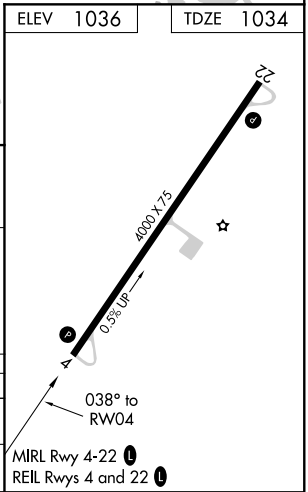
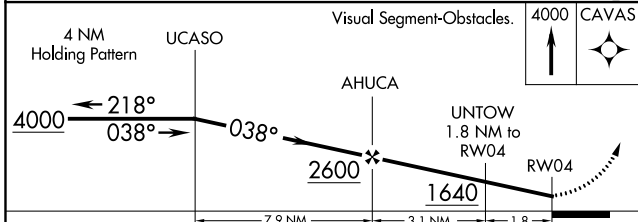
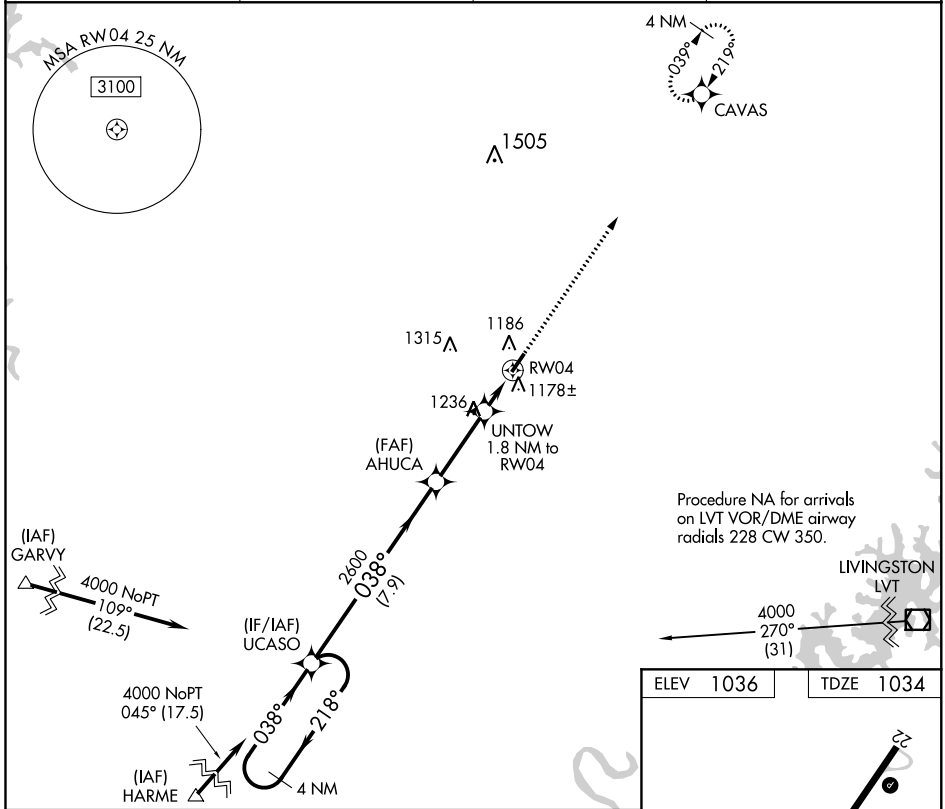
# RNAV (GPS) RWY 4

TOMPKINSVILLE-MONROE COUNTY (T'ZV)

APP CRS <b>038°</b>	Rwy Idg <b>4000</b>
	TDZE <b>1034</b>
	Apt Elev <b>1036</b>

<p><b>▽</b> DME/DME RNP-0.3 NA.                  Helicopter visibility reduction below 1 SM NA.  <b>△</b> NA                  Night landing: Rwy 4 NA.                  Use Glasgow altimeter setting.</p>	<p>MISSED APPROACH: Climb to 4000 direct CAVAS and hold.</p>
--	--

<p>AWOS-AV <b>123.050</b></p>	<p>GLASGOW MUNI AWOS-3 <b>118.525</b></p>	<p>MEMPHIS CENTER <b>132.9 263.1</b></p>	<p>UNICOM <b>123.05 (CTAF) 0</b></p>
-----------------------------------	---	--	--



CATEGORY	A	B	C	D
LNAV MDA	1540-1	506 (600-1)	1540-1 3/8 506 (600-1 3/8)	NA
<b>C</b> CIRCLING	1640-1 604 (700-1)	1800-1 764 (800-1)	1840-2 1/4 804 (900-2 1/4)	NA

SE-1, 15 AUG 2019 to 12 SEP 2019

SE-1, 15 AUG 2019 to 12 SEP 2019