

LOC/DME I-TYR 111.95 Chan 56 (Y)	APP CRS 042°	Rwy Idg TDZE Apt Elev	7734 542 544
---	------------------------	-----------------------------	---

ILS or LOC RWY 4

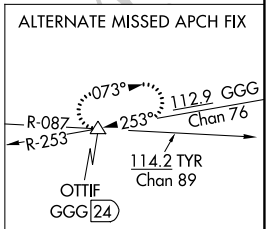
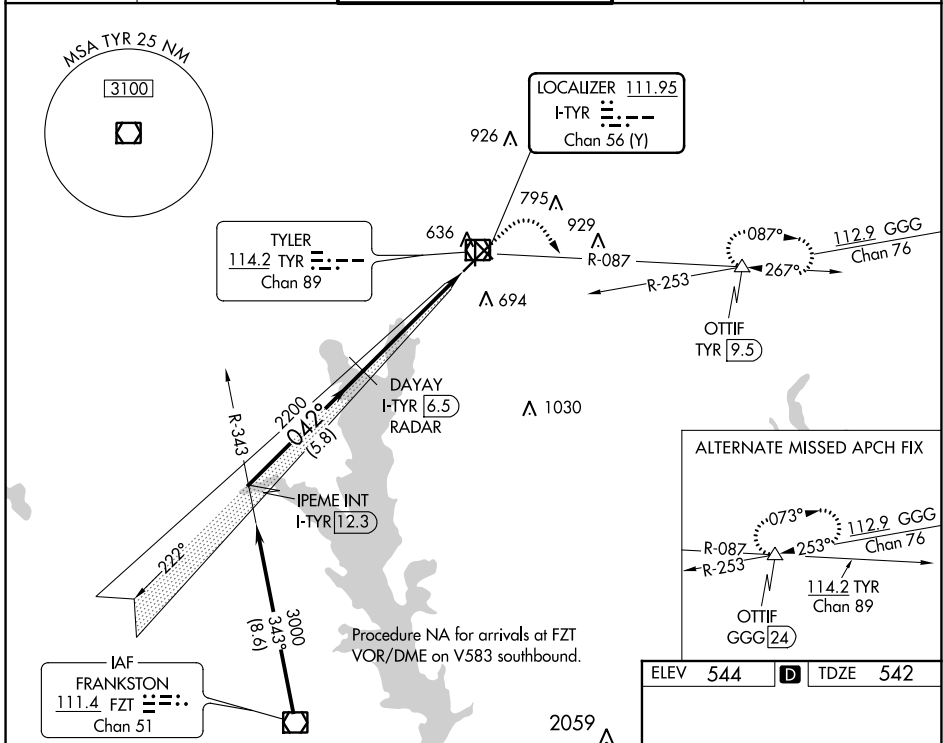
TYLER POUNDS RGNL (TYR)

DME required.
 For inop ALS increase S-LOC 4 Cat C/D visibility to 1 SM.

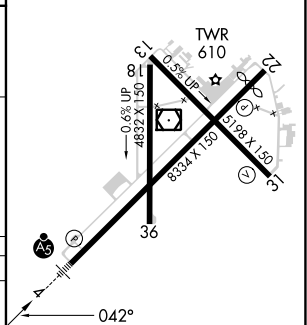
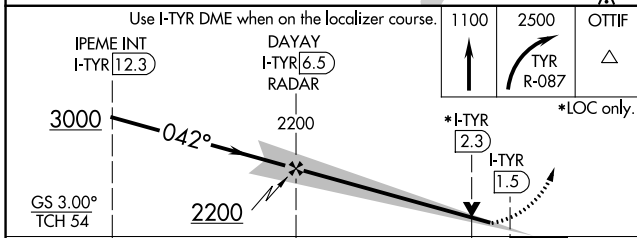
MALSR

 MISSED APPROACH: Climb to 1100 then climbing right turn to 2500 on TYR VOR/DME R-087 to OTTIF/TYR 9.5 DME and hold.

ATIS 126.25	LONGVIEW APP CON * 128.75 379.15	POUNDS TOWER * 120.1 (CTAF) 257.8	GND CON 121.9	UNICOM 122.95
-----------------------	--	---	-------------------------	-------------------------



ELEV	544	D	TDZE	542
------	-----	---	------	-----



CATEGORY	A	B	C	D
S-ILS 4	742-1/2		200 (200-1/2)	
S-LOC 4	900-1/2	358 (400-1/2)	900-5/8	358 (400-5/8)
CIRCLING	980-1 436 (500-1)	1020-1 476 (500-1)	1160-1 3/4 616 (700-1 3/4)	1280-2 1/4 736 (800-2 1/4)

REIL Rwy 22
 MIRL Rwy 18-36
 HIRL Rwy 4-22 and 13-31

SC-2, 22 FEB 2024 to 21 MAR 2024

SC-2, 22 FEB 2024 to 21 MAR 2024

TYLER, TEXAS

AL-622 (FAA)

23278

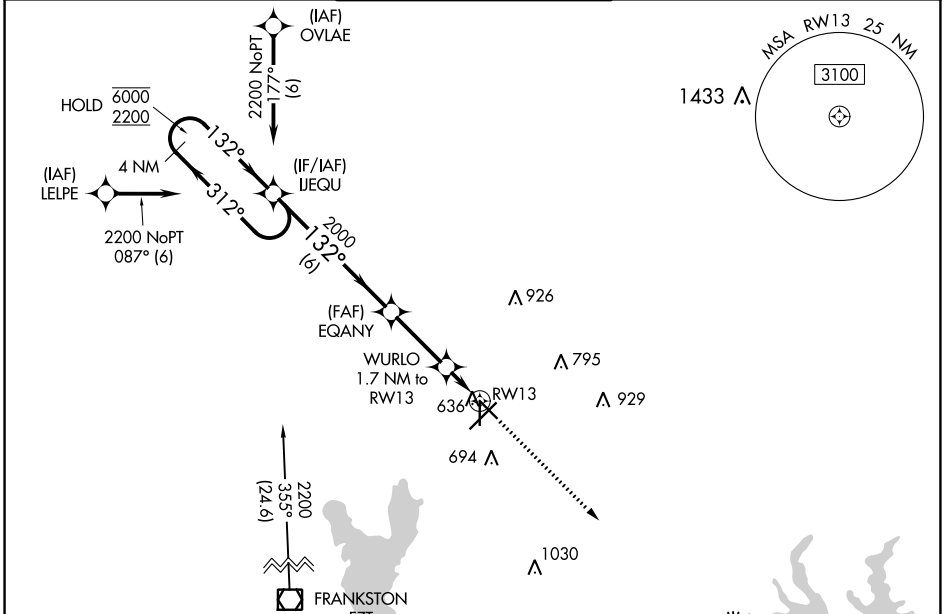
WAAS CH 45701 W13A	APP CRS 132°	Rwy Idg 5198 TDZE 539 Apt Elev 544
--	------------------------	---

RNAV (GPS) RWY 13

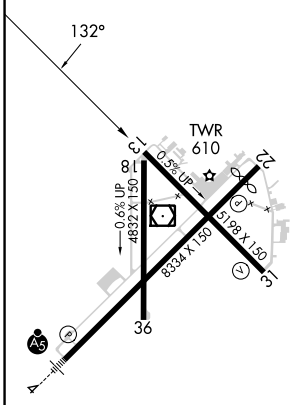
TYLER POUNDS RGNL (TYR)

RNP APCH.		MISSED APPROACH: Climb to 3000 direct JUHWO and hold.		
<p>▼ For uncompensated Baro-VNAV systems, LNAV/VNAV NA below -5°C or above 54°C.</p>				

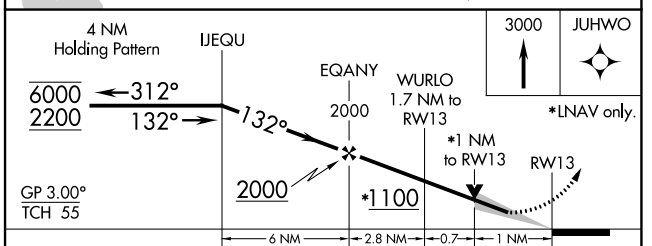
ATIS 126.25	LONGVIEW APP CON * 128.75 379.15	POUNDS TOWER* 120.1(CTAF) 257.8	GND CON 121.9	UNICOM 122.95
-----------------------	--	---	-------------------------	-------------------------



ELEV 544	D	TDZE 539
-----------------	----------	-----------------



REIL Rwy 22
MIRL Rwy 18-36
HIRL Rwy 4-22 and 13-31



CATEGORY	A	B	C	D
LPV DA		739-3/4	200 (200-3/4)	
LNAV/VNAV DA		820-7/8	281 (300-7/8)	
LNAV MDA		900-1	361 (400-1)	
C CIRCLING	980-1 436 (500-1)	1020-1 476 (500-1)	1160-1 3/4 616 (700-1 3/4)	1280-2 1/4 736 (800-2 1/4)

TYLER, TEXAS
Amdt 3A 08OCT20

32°21'N-95°24'W

TYLER POUNDS RGNL (TYR) RNAV (GPS) RWY 13

SC-2, 22 FEB 2024 to 21 MAR 2024

SC-2, 22 FEB 2024 to 21 MAR 2024

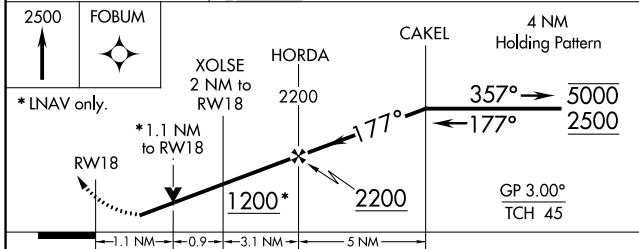
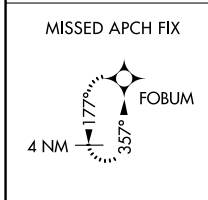
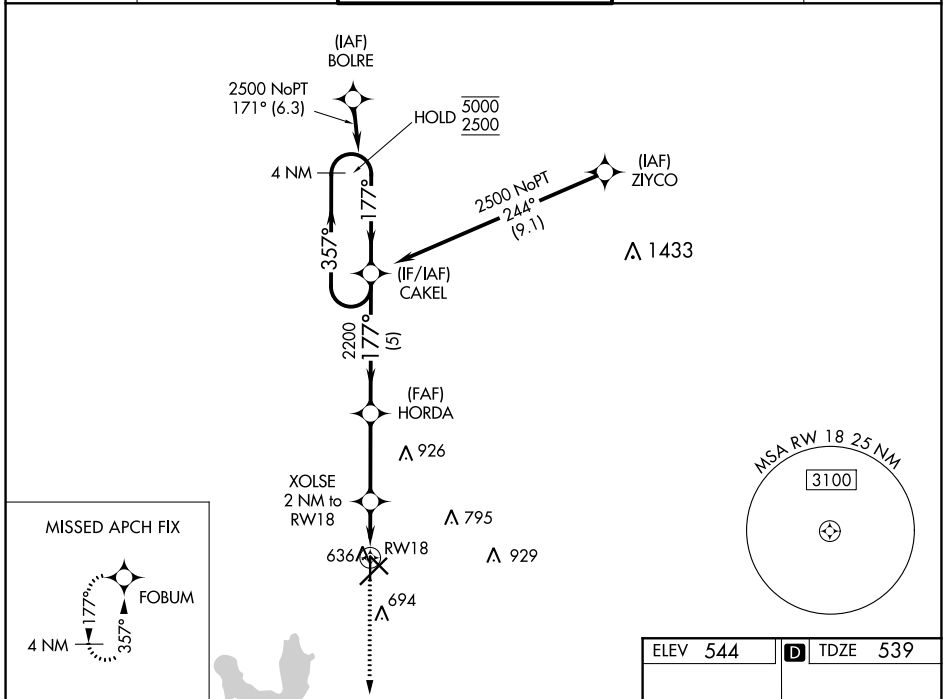
WAAS CH 58337 W18A	APP CRS 177°	Rwy Idg 4832 TDZE 539 Apt Elev 544
--	------------------------	---

RNAV (GPS) RWY 18

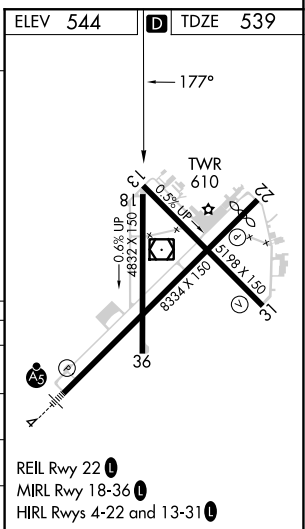
TYLER POUNDS RGNL (TYR)

RNP APCH.	MISSED APPROACH: Climb to 2500 direct FOBUM and hold.
<p>⚠ Rwy 18 helicopter visibility reduction below 3/4 SM NA. For uncompensated Baro-VNAV systems, LNAV/VNAV NA below -6°C or above 54°C.</p>	

ATIS 126.25	LONGVIEW APP CON ★ 128.75 379.15	POUNDS TOWER ★ 120.1(CTAF) 257.8	GND CON 121.9	UNICOM 122.95
-----------------------	--	--	-------------------------	-------------------------



CATEGORY	A	B	C	D
LPV DA		789-1	250 (300-1)	
LNAV/VNAV DA		818-1	279 (300-1)	
LNAV MDA		900-1	361 (400-1)	
C CIRCLING	980-1 436 (500-1)	1020-1 476 (500-1)	1160-1 3/4 616 (700-1 3/4)	1280-2 1/4 736 (800-2 1/4)



SC-2, 22 FEB 2024 to 21 MAR 2024

SC-2, 22 FEB 2024 to 21 MAR 2024

WAAS CH 45514 W22A	APP CRS 222°	Rwy Idg TDZE Apt Elev	7734 539 544
--	------------------------	-----------------------------	---

RNAV (GPS) RWY 22

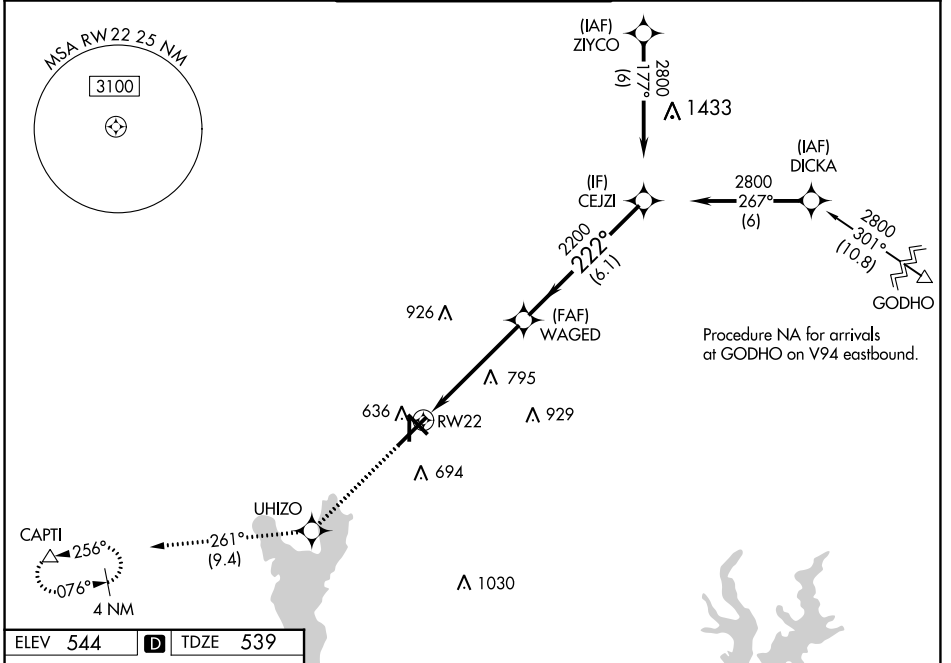
TYLER POUNDS RGNL (TYR)

RNP APCH.

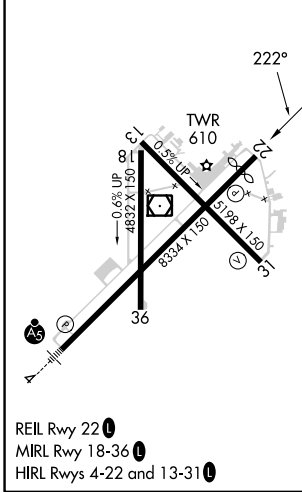
▼ For uncompensated Baro-VNAV systems, LNAV/VNAV NA below -5°C or above 54°C.

▲ MISSED APPROACH: Climb to 2500 direct UHIZO and on track 261° to CAPTI and hold.

ATIS 126.25	LONGVIEW APP CON* 128.75 379.15	POUNDS TOWER* 120.1 (CTAF) 257.8	GND CON 121.9	UNICOM 122.95
-----------------------	---	--	-------------------------	-------------------------



ELEV 544	D	TDZE 539
-----------------	----------	-----------------



2500	UHIZO	tr 261°	CAPTI	
*LNAV only.				
RW22		WAGED	CEJZI	
1.4 NM		3.7 NM	6.1 NM	
GP 3.00°	TCH 54			
CATEGORY	A	B	C	D
LPV DA		739-3/4	200 (200-3/4)	
LNAV/VNAV DA		807-7/8	268 (300-7/8)	
LNAV MDA	1040-1	501 (500-1)	1040-1 3/8	501 (500-1 3/8)
C CIRCLING	1040-1	496 (500-1)	1160-1 3/4 616 (700-1 3/4)	1280-2 1/4 736 (800-2 1/4)

SC-2, 22 FEB 2024 to 21 MAR 2024

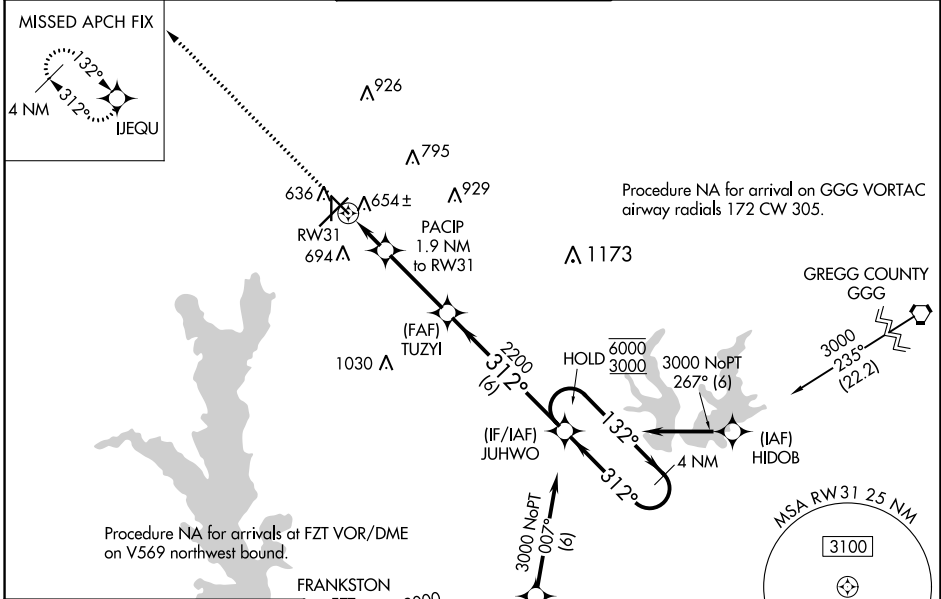
SC-2, 22 FEB 2024 to 21 MAR 2024

WAAS CH 61101 W31A	APP CRS 312°	Rwy ldg TDZE 544 Apt Elev 544
--	------------------------	---

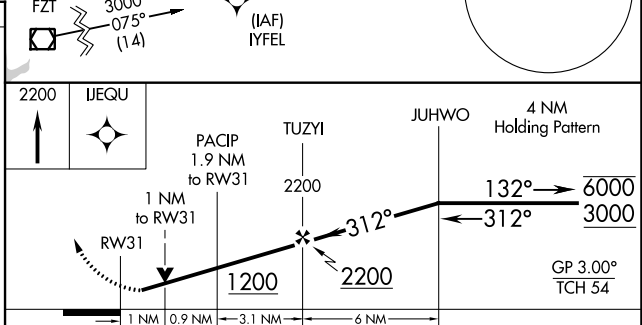
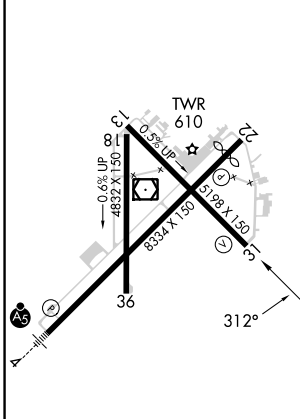
RNAV (GPS) RWY 31

TYLER POUNDS RGNL (TYR)

RNP APCH - GPS.		MISSED APPROACH: Climb to 2200 direct IJEQU and hold.			
⚠ Rwy 31 helicopter visibility reduction below 3/4 SM NA. ⚠ For uncompensated Baro-VNAV systems, LNAV/VNAV NA below -8°C or above 54°C.	ATIS 126.25	LONGVIEW APP CON* 128.75 379.15	POUNDS TOWER* 120.1 (CTAF) 0 257.8	GND CON 121.9	UNICOM 122.95



ELEV 544	D	TDZE 544
-----------------	----------	-----------------



CATEGORY	A	B	C	D
LPV DA		794-1	250 (300-1)	
LNAV/VNAV DA		821-1	277 (300-1)	
LNAV MDA		920-1	356 (400-1)	
C CIRCLING	980-1 436 (500-1)	1020-1 476 (500-1)	1160-1 3/4 616 (700-1 3/4)	1280-2 1/4 736 (800-2 1/4)

TYLER, TEXAS

AL-622 (FAA)

23278

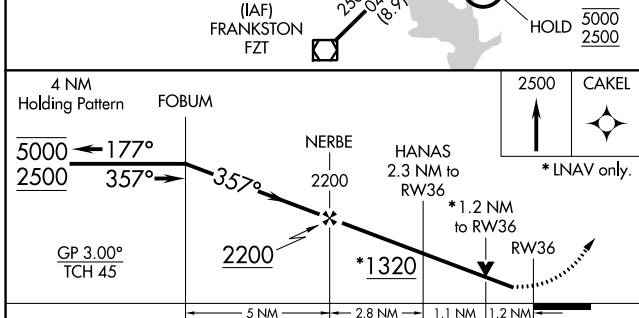
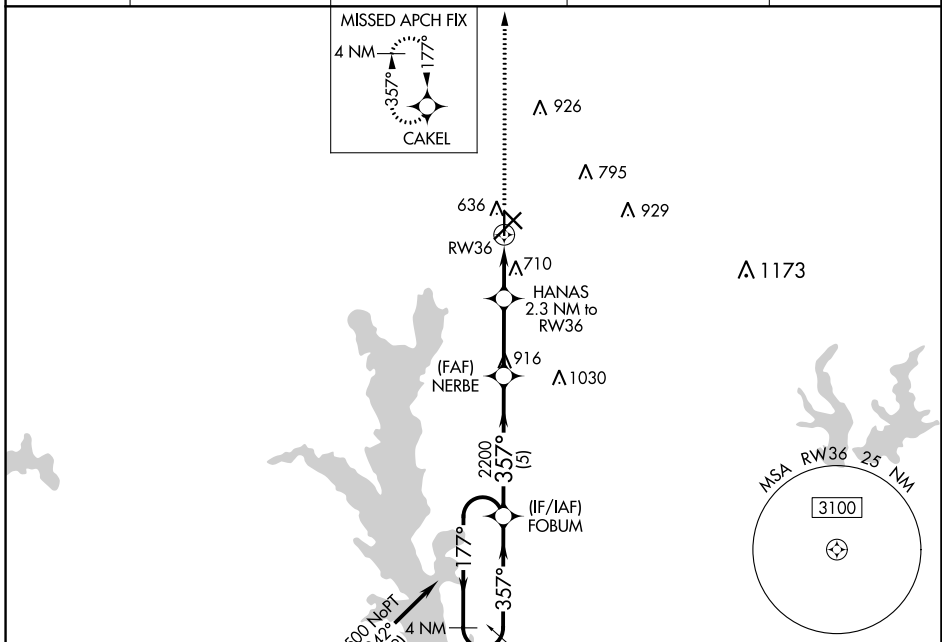
WAAS CH 73037 W36A	APP CRS 357°	Rwy Idg TDZE Apt Elev	4832 544 544
--	------------------------	-----------------------------	---

RNAV (GPS) RWY 36

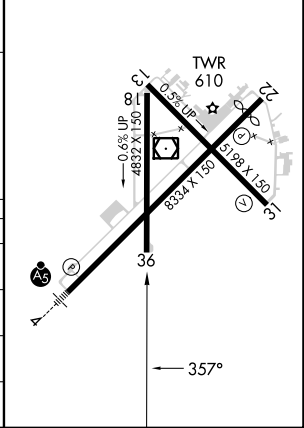
TYLER POUNDS RGNL (TYR)

RNP APCH.	MISSED APPROACH: Climb to 2500 direct CAKEL and hold.
-----------	---

ATIS 126.25	LONGVIEW APP CON ★ 128.75 379.15	POUNDS TOWER ★ 120.1 (CTAF) 0 257.8	GND CON 121.9	UNICOM 122.95
-----------------------	--	---	-------------------------	-------------------------



ELEV 544	D TDZE 544
REIL Rwy 22	MIRL Rwy 18-36
HIRL Rwy 4-22 and 13-31	



CATEGORY	A	B	C	D
LPV DA		794-1	250 (300-1)	
LNAV/VNAV DA		799-1	255 (300-1)	
LNAV MDA	960-1	416 (500-1)	960-1 $\frac{1}{8}$	416 (500-1 $\frac{1}{8}$)
C CIRCLING	980-1 436 (500-1)	1020-1 476 (500-1)	1160-1 $\frac{3}{4}$ 616 (700-1 $\frac{3}{4}$)	1280-2 $\frac{1}{4}$ 736 (800-2 $\frac{1}{4}$)

TYLER, TEXAS
Amdt 1A 25FEB21

32°21'N-95°24'W

TYLER POUNDS RGNL (TYR) RNAV (GPS) RWY 36

SC-2, 22 FEB 2024 to 21 MAR 2024

SC-2, 22 FEB 2024 to 21 MAR 2024


WAAS CH 40014 W04A	APP CRS 042°	Rwy Idg TDZE Apt Elev	7734 542 544
--	------------------------	-----------------------------	---

RNAV (GPS) RWY 4

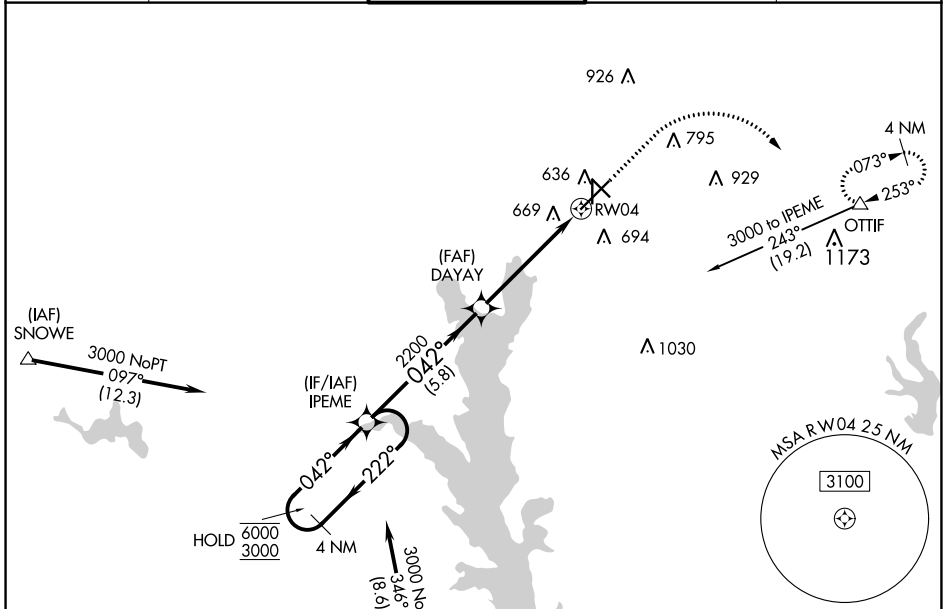
TYLER POUNDS RGNL (TYR)

RNP APCH - GPS.

⚠ For uncompensated Baro-VNAV systems, LNAV/VNAV NA below -7°C or above 54°C. For inop ALS, increase LNAV/VNAV all Cats visibility to 1 1/8 SM, LNAV all Cats visibility to 1 SM.

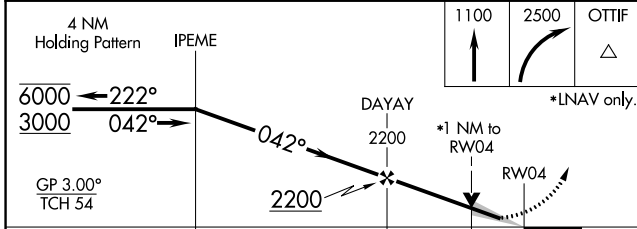
MALSR  MISSED APPROACH: Climb to 1100 then climbing right turn to 2500 direct OTTIF and hold.

ATIS 126.25	LONGVIEW APP CON ★ 128.75 379.15	POUNDS TOWER ★ 120.1 (CTAF) 257.8	GND CON 121.9	UNICOM 122.95
-----------------------	--	---	-------------------------	-------------------------

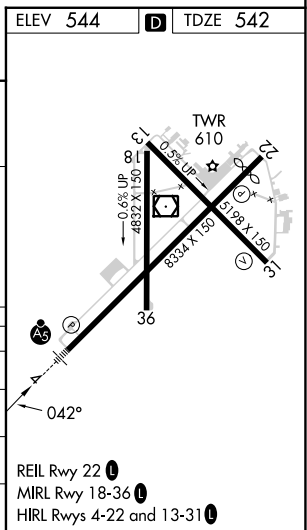


Procedure NA for arrival on FZT VOR/DME airway radials 275 CW 004.

ELEV 544	D TDZE 542
----------	-------------------



CATEGORY	A	B	C	D
LPV DA		742-1/2	200 (200-1/2)	
LNAV/VNAV DA		943-3/4	401 (400-3/4)	
LNAV MDA	920-1/2	378 (400-1/2)	920-5/8	378 (400-5/8)
C CIRCLING	980-1 436 (500-1)	1020-1 476 (500-1)	1160-1 3/4 616 (700-1 3/4)	1280-2 1/4 736 (800-2 1/4)



- REIL Rwy 22 **Ⓛ**
- MIRL Rwy 18-36 **Ⓛ**
- HIRL Rwy 4-22 and 13-31 **Ⓛ**

SC-2, 22 FEB 2024 to 21 MAR 2024

SC-2, 22 FEB 2024 to 21 MAR 2024

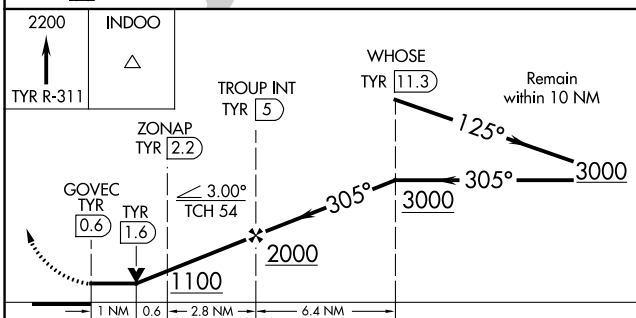
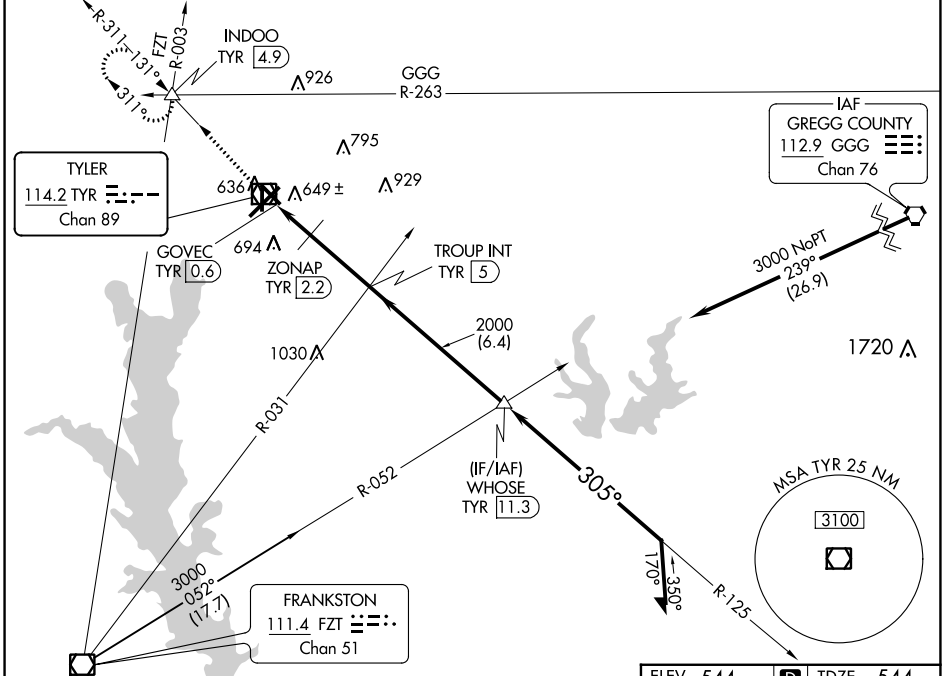
VOR/DME TYR	APP CRS	Rwy Idg	5198
114.2	305°	TDZE	544
Chan 89		Apt Elev	544

VOR RWY 31

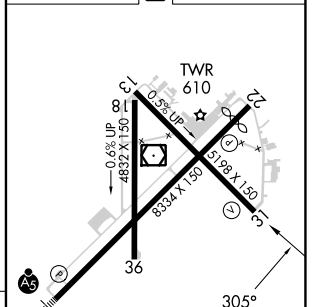
TYLER POUNDS RGNL (TYR)

▼ Rwy 31 helicopter visibility reduction below 3/4 SM NA. **▲** MISSED APPROACH: Climb to 2200 on TYR VOR/DME R-311 to INDOO INT/4.9 DME and hold.

ATIS 126.25	LONGVIEW APP CON ★ 128.75 379.15	POUNDS TOWER ★ 120.1 (CTAF) 257.8	GND CON 121.9	UNICOM 122.95
-----------------------	--	---	-------------------------	-------------------------



ELEV 544 **D** TDZE 544



CATEGORY	A	B	C	D
S-31	1100-1	556 (600-1)	1100-1 1/2	556 (600-1 1/2)
C CIRCLING	1100-1	556 (600-1)	1160-1 3/4 616 (700-1 3/4)	1280-2 1/4 736 (800-2 1/4)
ZONAP FIX MINIMUMS (DME REQUIRED)				
S-31	920-1 376 (400-1)			
C CIRCLING	980-1 436 (500-1)	1020-1 476 (500-1)	1160-1 3/4 616 (700-1 3/4)	1280-2 1/4 736 (800-2 1/4)

REIL Rwy 22 1	FAF to MAP 4.4 NM
MIRL Rwy 18-36 1	
HIRL Rwy 4-22 and 13-31 1	
Knots	60 90 120 150 180
Min:Sec	4:24 2:56 2:12 1:46 1:28

SC-2, 22 FEB 2024 to 21 MAR 2024

SC-2, 22 FEB 2024 to 21 MAR 2024

TYLER, TEXAS

AL-622 (FAA)

23278

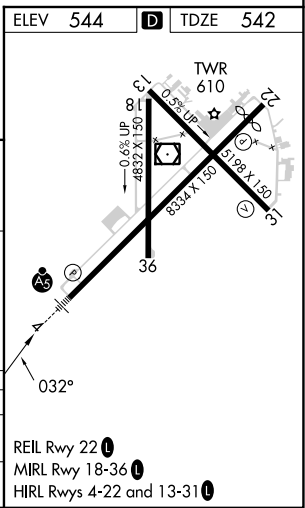
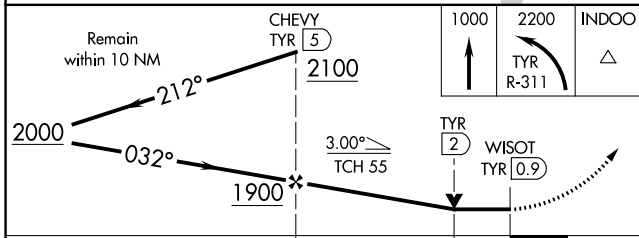
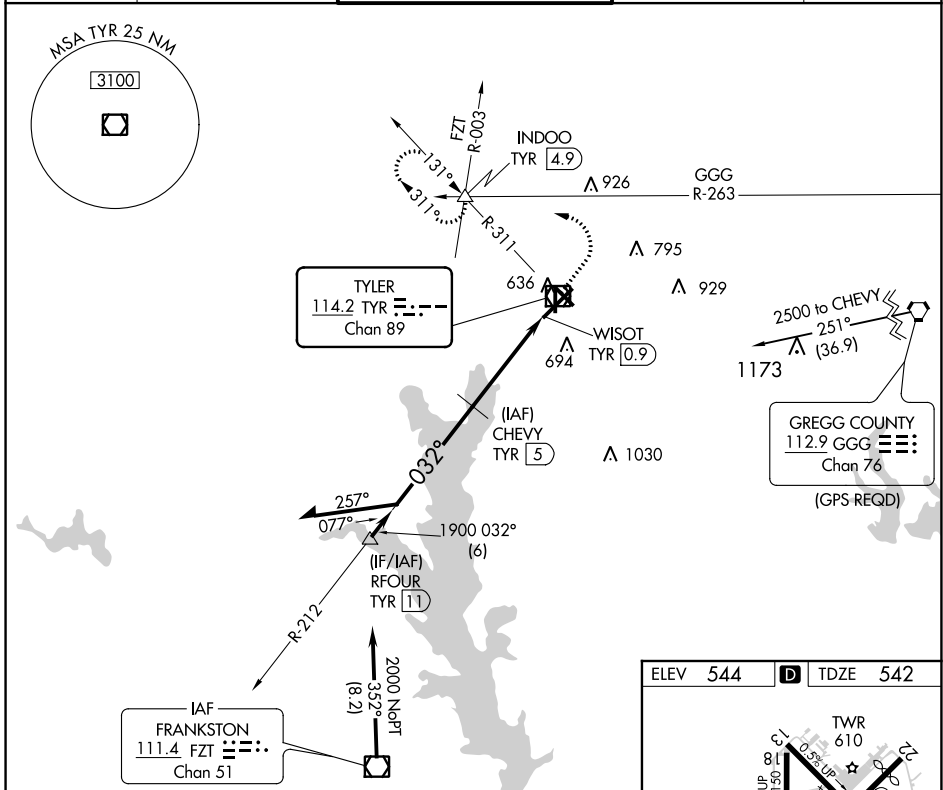
VOR/DME TYR 114.2 Chan 89	APP CRS 032°	Rwy Idg TDZE Apt Elev	7734 542 544
---	------------------------	-----------------------------	---

VOR RWY 4

TYLER POUNDS RGNL (TYR)

DME required.		MALSR	MISSED APPROACH: Climb to 1000 then climbing left turn to 2200 on TYR VOR/DME R-311 to INDOO INT/TYR 4.9 DME and hold.
▼ For inop ALS, increase Cat C/D visibility to 1 1/8 SM.		AS	

ATIS 126.25	LONGVIEW APP CON * 128.75 379.15	POUNDS TOWER * 120.1 (CTAF) 257.8	GND CON 121.9	UNICOM 122.95
-----------------------	--	---	-------------------------	-------------------------



CATEGORY	A	B	C	D
S-4	940-1/2 398 (400-1/2)		940-3/4 398 (400-3/4)	
CIRCLING	980-1 436 (500-1)	1020-1 476 (500-1)	1160-1 3/4 616 (700-1 3/4)	1280-2 1/4 736 (800-2 1/4)

TYLER, TEXAS
Amdt 5C 20APR23

32°21'N-95°24'W

TYLER POUNDS RGNL (TYR)
VOR RWY 4

SC-2, 22 FEB 2024 to 21 MAR 2024

SC-2, 22 FEB 2024 to 21 MAR 2024