

VINTA THREE ARRIVAL  
 (VINTA.VINTA3) 02DEC21

(VINTA.VINTA3) 24025  
 VINTA THREE ARRIVAL

AL-432 (FAA)

TULSA, OKLAHOMA

TULSA, OKLAHOMA

TULSA APP CON  
 119.1 360.825  
 RVS ATIS  
 126.5  
 TUL D-ATIS  
 124.9 377.2

BARTLESVILLE  
 117.9 BVO  
 Chan 126

SPRINGFIELD  
 116.9 SGF  
 Chan 116

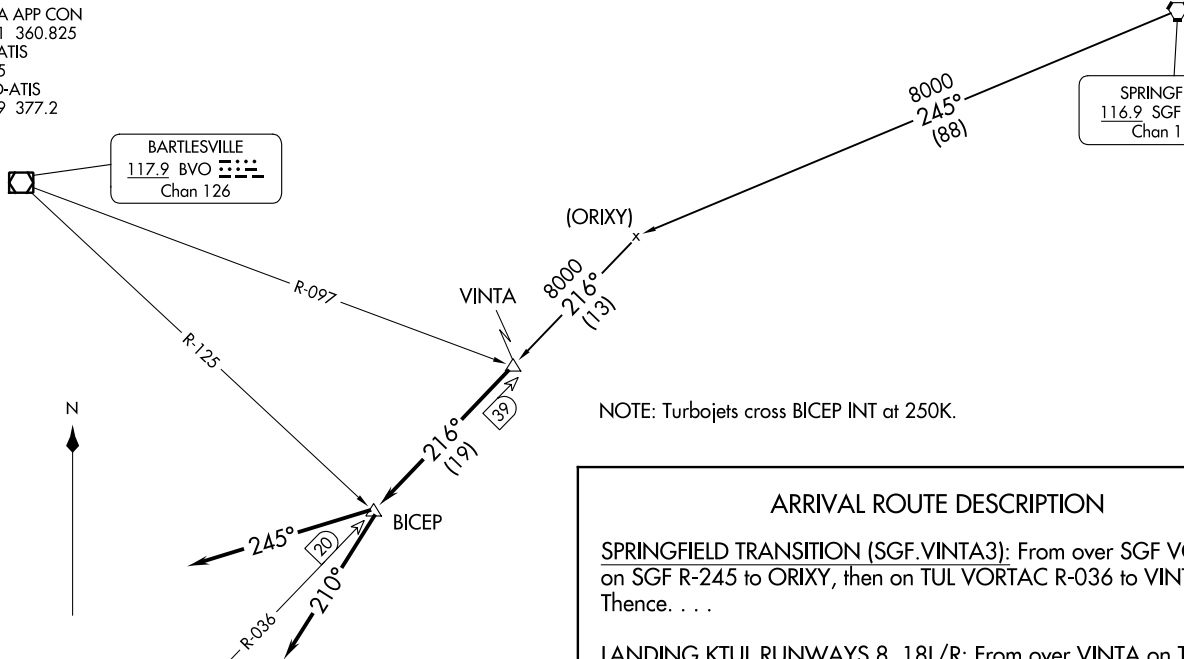
TULSA  
 114.4 TUL  
 Chan 91

N

TULSA INTL

TULSA RIVERSIDE

NOTE: Chart not to scale.



NOTE: Turbojets cross BICEP INT at 250K.

ARRIVAL ROUTE DESCRIPTION

SPRINGFIELD TRANSITION (SGF.VINTA3): From over SGF VORTAC on SGF R-245 to ORIXY, then on TUL VORTAC R-036 to VINTA. Thence. . . .

LANDING KTUL RUNWAYS 8, 18L/R: From over VINTA on TUL VORTAC R-036 to BICEP. Depart BICEP heading 245°. Expect vectors to final approach course. Turbojets cross BICEP at 250K.

LANDING KTUL RUNWAYS 26, 36L/R: From over VINTA on TUL VORTAC R-036 to BICEP. Depart BICEP heading 210°. Expect vectors to final approach course. Turbojets cross BICEP at 250K.

LANDING KRVS: From over VINTA on TUL VORTAC R-036 to BICEP. Depart BICEP heading 210°. Expect vectors to final approach course.