

DALLAS THREE DEPARTURE  
(DAL3 TTT) 25JAN24

DALLAS, TEXAS  
MCKINNEY NTL (TKX)

REGIONAL DEP CON  
124.3 282.275  
CLNC DEL (When twr closed)  
121.35  
GND CON  
121.875  
MC KINNEY TOWER \*  
118.825 (CTAF)

RADAR and DME required.

TAKEOFF MINIMUMS  
Rwys 18, 36: Standard.

TOP ALTITUDE:  
ASSIGNED BY ATC

BONHAM  
114.6 BYP  
Chan 93

NOBLY  
5000  
\*2300  
064°  
(38)

TRISS  
5000  
\*2100  
074°  
(39)

MAVERICK  
113.1 TTT  
Chan 78

SOLDO  
3000  
\*2300  
084°  
(36)

CLARE  
5000  
\*2400  
094°  
(36)

COBUG  
5000  
\*2300  
064°  
(38)

SHERO  
5000  
\*2100  
074°  
(39)

POTEN  
14000  
\*2100  
079°  
(44)

GREGG COUNTY  
112.9 GGG  
Chan 76

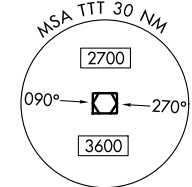
ORTRO  
FL230  
\*2100  
055°  
(117) R-235

TEXARKANA  
116.3 TXK  
Chan 110

7500  
\*2100  
064°  
(79)

TEKBE  
14000  
\*1900  
079°  
(25)

LITTLE ROCK  
113.9 LIT  
Chan 86



NOTE: BELCHER Transition: For aircraft inbound to the JAN, MLU, and SHV terminal areas only.  
NOTE: SOLDO Transition: ATC assigned.

BELCHER  
117.4 EIC  
Chan 121



(DAL3 TTT) 24025  
DALLAS THREE DEPARTURE

AL6644 (FAA)

MCKINNEY NTL (TKX)  
DALLAS, TEXAS

(CONTINUED ON FOLLOWING PAGE)

NOTE: Chart not to scale.

# DALLAS THREE DEPARTURE

DALLAS, TEXAS



## DEPARTURE ROUTE DESCRIPTION

When entering controlled airspace, fly assigned heading for RADAR vectors to appropriate route. Maintain ATC assigned altitude.

BELCHER TRANSITION (DALL3.EIC): From over TTT VOR/DME on TTT R-094 to POTEN, then on EIC R-259 to EIC VORTAC.

LITTLE ROCK TRANSITION (DALL3.LIT): From over TTT VOR/DME on TTT R-064 to ORTRO, then on LIT R-235 to LIT VORTAC.

SOLDO TRANSITION (DALL3.SOLDO): From over TTT VOR/DME on TTT R-084 to SOLDO.

TEXARKANA TRANSITION (DALL3.TXK): From over TTT VOR/DME on TTT R-074 to SHERO, then on TXK R-244 to TXK VORTAC.

SC-2, 22 FEB 2024 to 21 MAR 2024

SC-2, 22 FEB 2024 to 21 MAR 2024

GARLAND FIVE DEPARTURE  
(GARL5.TT) 25JAN24

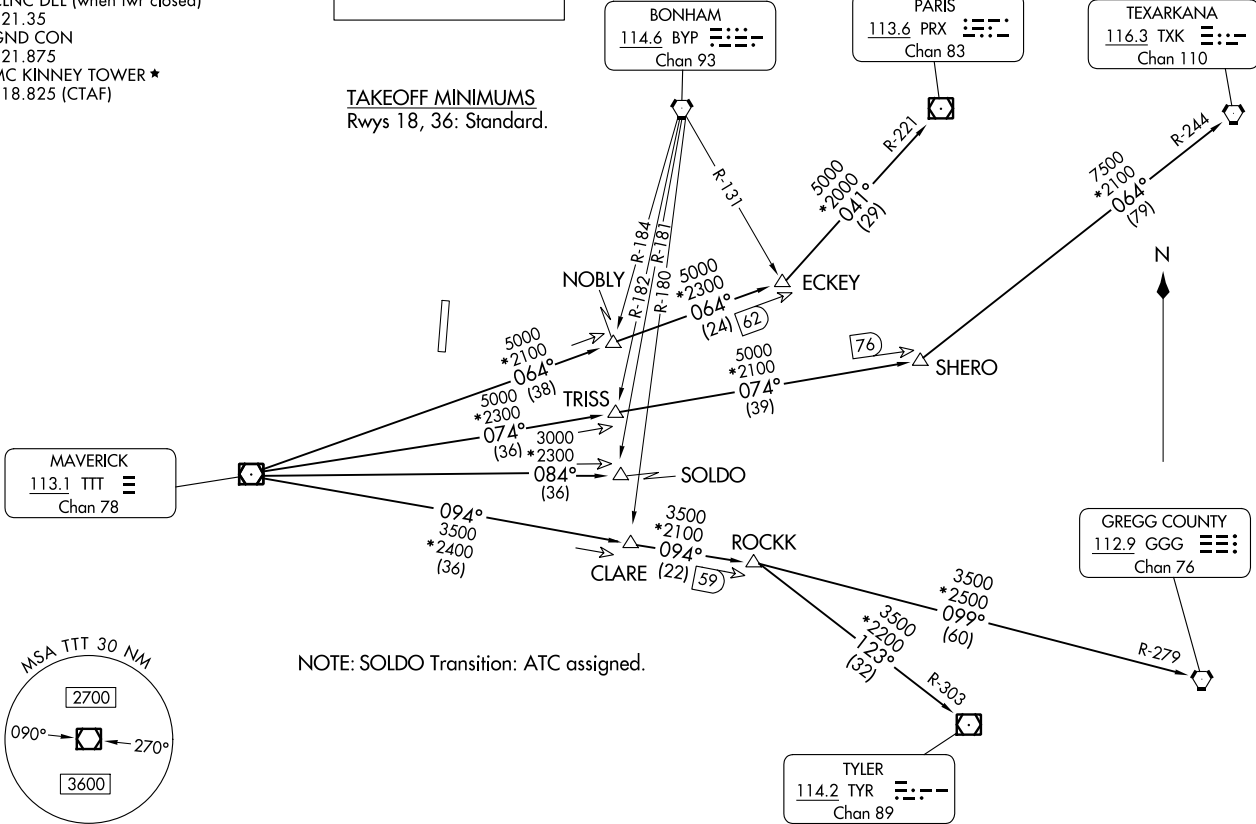
MCKINNEY NTL (TK1)  
DALLAS, TEXAS

REGIONAL DEP CON  
124.3 282.275  
CLNC DEL (when twr closed)  
121.35  
GND CON  
121.875  
MC KINNEY TOWER \*  
118.825 (CTAF)

**TOP ALTITUDE:  
ASSIGNED BY ATC**

TAKEOFF MINIMUMS  
Rwys 18, 36: Standard.

RADAR and DME required.



NOTE: Chart not to scale.

(CONTINUED ON FOLLOWING PAGE)

(GARL5.TT) 24025  
GARLAND FIVE DEPARTURE

AL-6644 (FAA)

MCKINNEY NTL (TK1)  
DALLAS, TEXAS

# GARLAND FIVE DEPARTURE



## DEPARTURE ROUTE DESCRIPTION

When entering controlled airspace, fly assigned heading for RADAR vectors to appropriate route. Maintain ATC assigned altitude.

GREGG COUNTY TRANSITION (GARL5.GGG): From over TTT VOR/DME on TTT R-094 to ROCKK, then on GGG R-279 to GGG VORTAC.

PARIS TRANSITION (GARL5.PRX): From over TTT VOR/DME on TTT R-064 to ECKEY, then on PRX R-221 to PRX VOR/DME.

SOLDO TRANSITION (GARL5.SOLDO): From over TTT VOR/DME on TTT R-084 to SOLDO.

TEXARKANA TRANSITION (GARL5.TXK): From over TTT VOR/DME on TTT R-074 to SHERO, then on TXK R-244 to TXK VORTAC.

TYLER TRANSITION (GARL5.TYR): From over TTT VOR/DME on TTT R-094 to ROCKK, then on TYR R-303 to TYR VOR/DME.

SC-2, 22 FEB 2024 to 21 MAR 2024

SC-2, 22 FEB 2024 to 21 MAR 2024

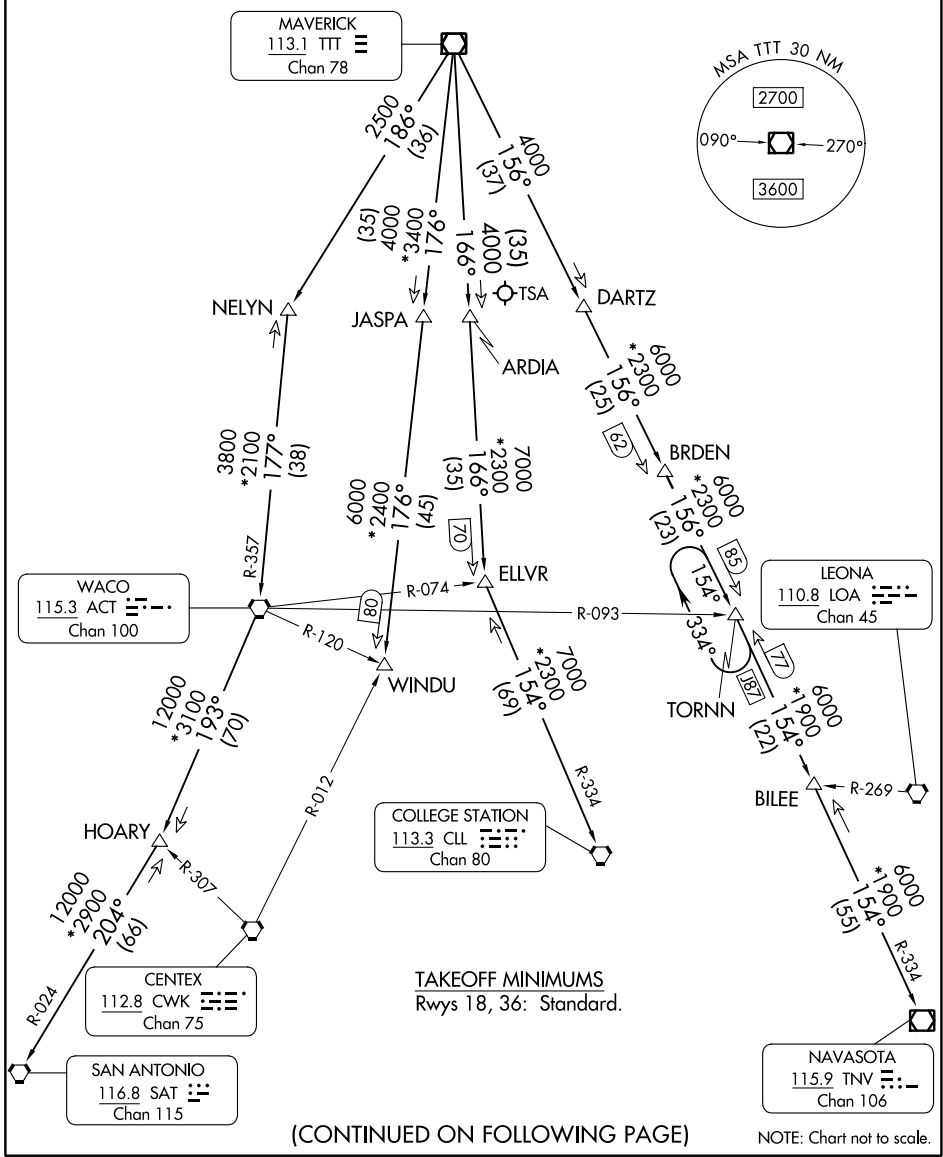
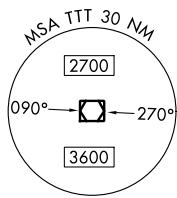
# JOE POOL SEVEN DEPARTURE

REGIONAL DEP CON  
124.3 282.275  
CLNC DEL (when twr closed)  
121.35  
GND CON  
121.875  
MC KINNEY TOWER★  
118.825 (CTAF)

RADAR and DME required.

**TOP ALTITUDE:  
ASSIGNED BY ATC**

MAVERICK  
113.1 TTT  
Chan 78



**TAKEOFF MINIMUMS**  
Rwys 18, 36: Standard.

(CONTINUED ON FOLLOWING PAGE)

NOTE: Chart not to scale.

SC-2, 22 FEB 2024 to 21 MAR 2024

SC-2, 22 FEB 2024 to 21 MAR 2024

# JOE POOL SEVEN DEPARTURE

# JOE POOL SEVEN DEPARTURE



## DEPARTURE ROUTE DESCRIPTION

When entering controlled airspace, fly assigned heading for RADAR vectors to appropriate route. Maintain ATC assigned altitude.

COLLEGE STATION TRANSITION (JPOOL7.CLL): From over TTT VOR/DME on TTT R-166 to ELLVR, then on CLL R-334 to CLL VORTAC.

ELLVR TRANSITION (JPOOL7.ELLVR): From over TTT VOR/DME on TTT R-166 to ELLVR.

HOARY TRANSITION (JPOOL7.HOARY): From over TTT VOR/DME on TTT R-186 to NELYN, then on ACT R-357 to ACT VORTAC, then on ACT R-193 to HOARY.

NAVASOTA TRANSITION (JPOOL7.TNV): From over TTT VOR/DME on TTT R-156 to TORNN, then on TNV R-334 to TNV VOR/DME.

SAN ANTONIO TRANSITION (JPOOL7.SAT): From over TTT VOR/DME on TTT R-186 to NELYN, then on ACT R-357 to ACT VORTAC, then on ACT R-193 to HOARY, then on SAT R-024 to SAT VORTAC.

TORNN TRANSITION (JPOOL7.TORNN): From over TTT VOR/DME on TTT R-156 to TORNN.

WACO TRANSITION (JPOOL7.ACT): From over TTT VOR/DME on TTT R-186 to NELYN, then on ACT R-357 to ACT VORTAC.

WINDU TRANSITION (JPOOL7.WINDU): From over TTT VOR/DME on TTT R-176 to WINDU.

NOTE: COLLEGE STATION Transition: For piston and turboprop aircraft destined to HOU, EFD, GLS, or LBX. Also for all other aircraft types destined to all other Houston terminal area airports except IAH, CXO, DWH, T78 or 6R3.

NOTE: ELLVR Transition: For turbojet aircraft destined to HOU, EFD, GLS, or LBX.

NOTE: SAN ANTONIO Transition: For aircraft overflying Centex and San Antonio.

NOTE: TORNN Transition: Only for aircraft destined IAH, CXO, DWH, T78 or 6R3.

NOTE: WACO Transition: For aircraft inbound to Waco or Gray terminal area airports.

NOTE: WINDU Transition: For aircraft inbound to Austin or San Antonio terminal area.

SC-2, 22 FEB 2024 to 21 MAR 2024

SC-2, 22 FEB 2024 to 21 MAR 2024

RADAR and DME required.

**TOP ALTITUDE:  
ASSIGNED BY ATC**

REGIONAL DEP CON  
124.3 282.275  
CLNC DEL (when twr closed)  
121.35  
GND CON  
121.875  
MC KINNEY TOWER \*  
118.825 (CTAF)

TAKEOFF MINIMUMS  
Rwys 18, 36: Standard.

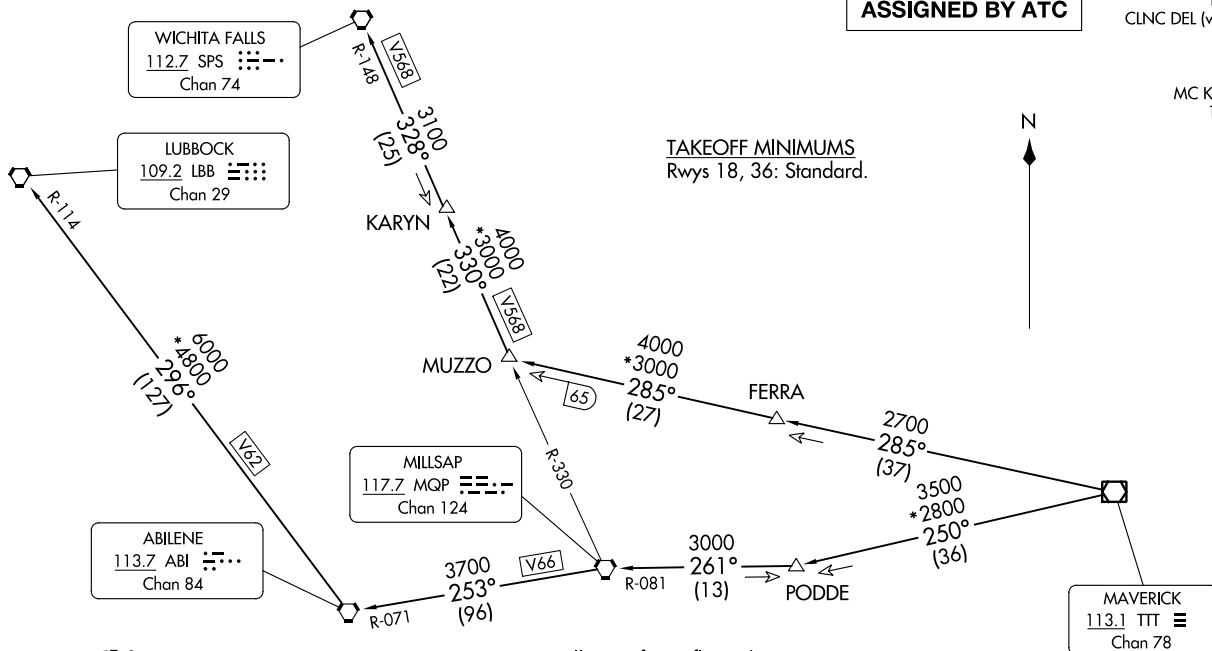
N

KINGDOM FOUR DEPARTURE  
(KING4.TTT) 25JAN24

(KING4.TTT) 24053  
KINGDOM FOUR DEPARTURE

AL-6644 (FAA)

MCKINNEY NTL (TKI)  
DALLAS, TEXAS



WICHITA FALLS  
112.7 SPS  
Chan 74

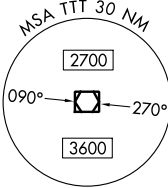
LUBBOCK  
109.2 LBB  
Chan 29

MILLSAP  
117.7 MQP  
Chan 124

ABILENE  
113.7 ABI  
Chan 84

MAVERICK  
113.1 TTT  
Chan 78

- NOTE: LUBBOCK Transition: For all aircraft overflying the MQP VORTAC westbound or direct.
- NOTE: MILLSAP Transition: For all aircraft overflying the MQP VORTAC westbound or direct.
- NOTE: PODDE Transition: ATC assigned.
- NOTE: WICHITA FALLS Transition: For all aircraft landing within the Wichita Falls terminal area or overflying the SPS VORTAC.
- NOTE: For all aircraft requesting 17000 and below.



NOTE: Chart not to scale.

(CONTINUED ON FOLLOWING PAGE)

DALLAS, TEXAS  
MCKINNEY NTL (TKI)

# KINGDOM FOUR DEPARTURE



## DEPARTURE ROUTE DESCRIPTION

When entering controlled airspace, fly assigned heading for RADAR vectors to appropriate route. Maintain ATC assigned altitude.

LUBBOCK TRANSITION (KING4.LBB): From over TTT VOR/DME on TTT R-250 to PODDE, then on MQP R-081 to MQP VORTAC, then on MQP R-253 and ABI R-071 to ABI VORTAC, then on ABI R-296 and LBB R-114 to LBB VORTAC.

MILLSAP TRANSITION (KING4.MQP): From over TTT VOR/DME on TTT R-250 to PODDE, then on MQP R-081 to MQP VORTAC.

PODDE TRANSITION (KING4.PODDE): From over TTT VOR/DME on TTT R-250 to PODDE.

WICHITA FALLS TRANSITION (KING4.SPS): From over TTT VOR/DME on TTT R-285 to MUZZO, then on MQP R-330 and SPS R-148 to KARYN, then on SPS R-148 to SPS VORTAC.

SC-2, 22 FEB 2024 to 21 MAR 2024

SC-2, 22 FEB 2024 to 21 MAR 2024



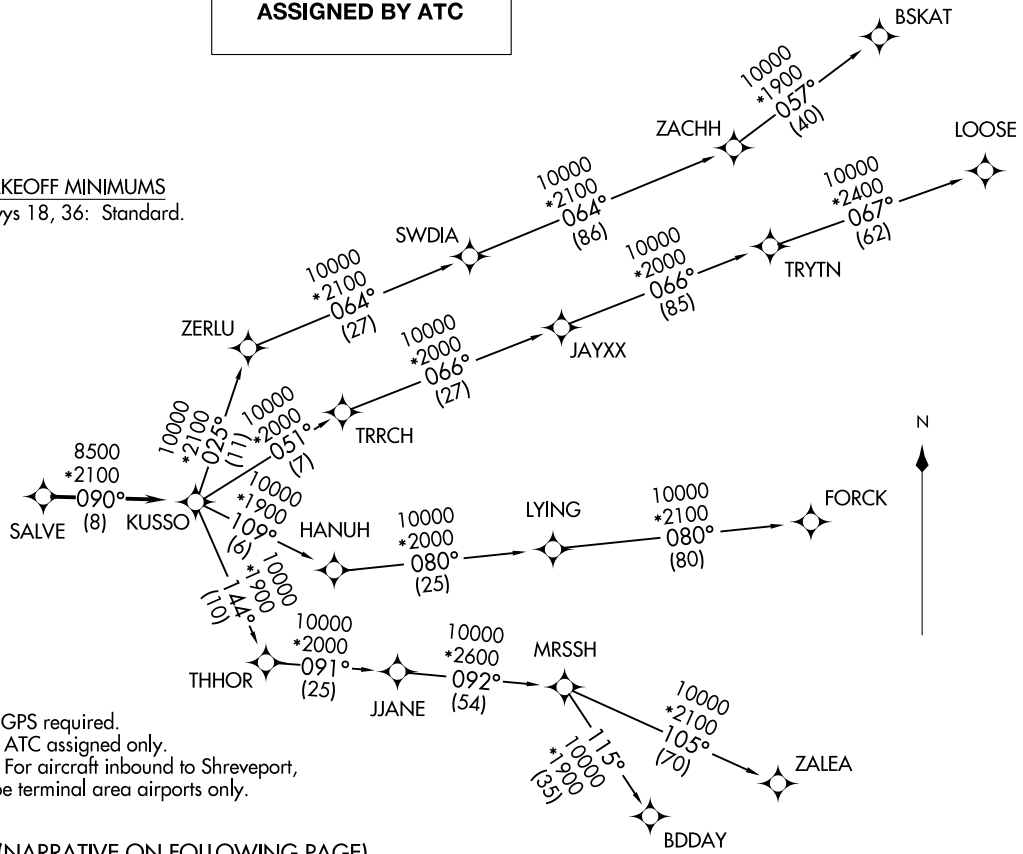
**TOP ALTITUDE:  
ASSIGNED BY ATC**

KUSSO ONE DEPARTURE (RNAV)  
(KUSSO1 .KUSSO) 24MAR22

(KUSSO1 .KUSSO) 22083  
AL-6644 (FAA)  
KUSSO ONE DEPARTURE (RNAV)

CLNC DEL (when twr closed)  
121.35  
GND CON  
121.875  
MC KINNEY TOWER \*  
118.825 (CTAF)  
REGIONAL DEP CON  
124.3 282.275

TAKEOFF MINIMUMS  
Rwys 18, 36: Standard.



- NOTE: RADAR required.
- NOTE: RNAV 1.
- NOTE: DME/DME/IRU or GPS required.
- NOTE: BDDAY Transition: ATC assigned only.
- NOTE: MRSSH Transition: For aircraft inbound to Shreveport, Jackson and Monroe terminal area airports only.

(NARRATIVE ON FOLLOWING PAGE)

NOTE: Chart not to scale.

DALLAS, TEXAS  
MCKINNEY NTL (TKI)

MCKINNEY NTL (TKI)  
DALLAS, TEXAS

# KUSSO ONE DEPARTURE (RNAV)



## DEPARTURE ROUTE DESCRIPTION

When entering controlled airspace, fly heading assigned by ATC, expect vector to SALVE, then on track 090° to KUSSO, then on assigned transition. Maintain ATC assigned altitude, expect filed altitude 10 minutes after departure.

- BDDAY TRANSITION (KUSSO1.BDDAY)
- BSKAT TRANSITION (KUSSO1.BSKAT)
- FORCK TRANSITION (KUSSO1.FORCK)
- LOOSE TRANSITION (KUSSO1.LOOSE)
- MRSSH TRANSITION (KUSSO1.MRSSH)
- ZALEA TRANSITION (KUSSO1.ZALEA)

SC-2, 22 FEB 2024 to 21 MAR 2024

SC-2, 22 FEB 2024 to 21 MAR 2024

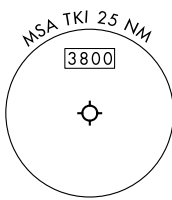
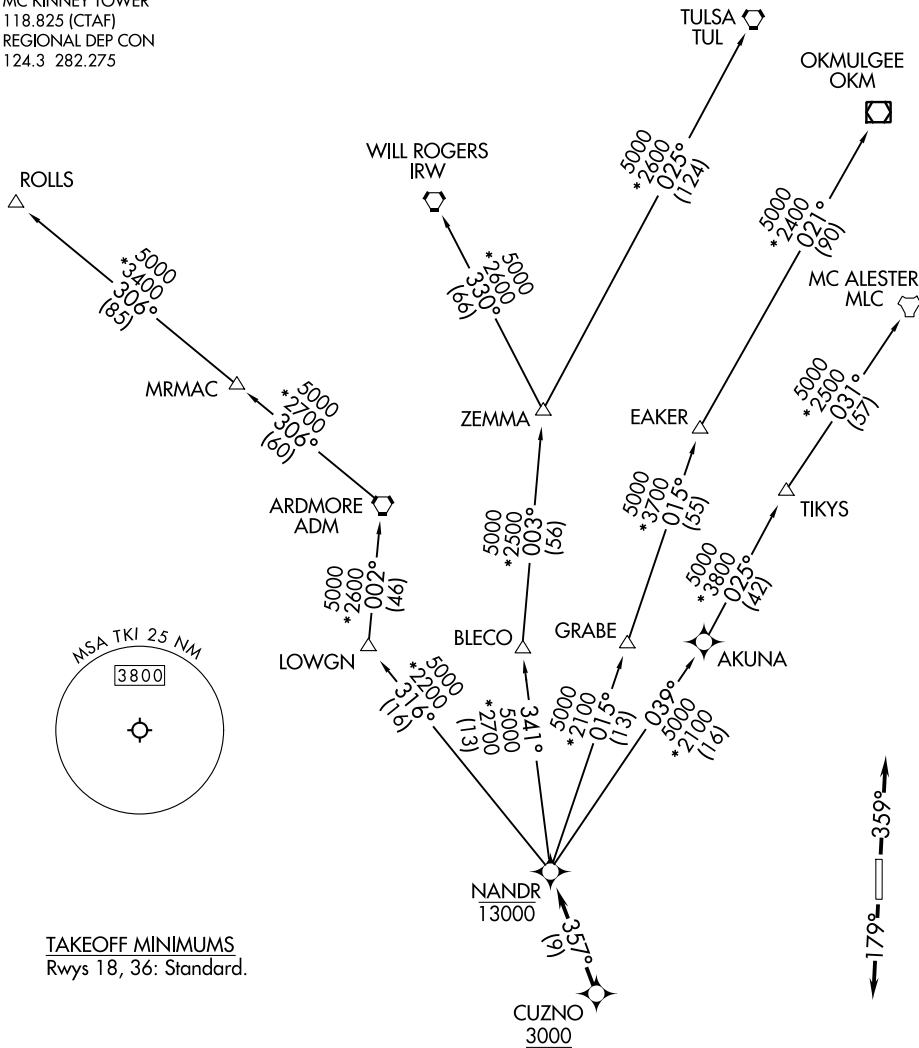
# NANDR TWO DEPARTURE (RNAV)

CLNC DEL (when twr closed)  
 121.35  
 GND CON  
 121.875  
 MC KINNEY TOWER\*  
 118.825 (CTAF)  
 REGIONAL DEP CON  
 124.3 282.275

RNAV 1 - DME/DME/IRU or GPS.

RADAR required.

**TOP ALTITUDE:  
ASSIGNED BY ATC**



**TAKEOFF MINIMUMS**  
 Rwy 18, 36: Standard.

NOTE: EAKER transition: For TUL terminal arrivals only.  
 NOTE: TULSA transition: For all aircraft overflying TUL VORTAC.  
 NOTE: Aircraft arriving to the Oklahoma City terminal area, file and expect the ZEMMA enroute transition.

NOTE: Chart not to scale.

(NARRATIVE ON FOLLOWING PAGE)

# NANDR TWO DEPARTURE (RNAV)

(NANDR2.NANDR) 20APR23

SC-2, 22 FEB 2024 to 21 MAR 2024

SC-2, 22 FEB 2024 to 21 MAR 2024

# NANDR TWO DEPARTURE(RNAV)



## DEPARTURE ROUTE DESCRIPTION

TAKEOFF RUNWAY 18: Climb on heading 179° or as assigned by ATC, thence...

TAKEOFF RUNWAY 36: Climb on heading 359° or as assigned by ATC, thence...

. . . . expect RADAR vectors to cross CUZNO at or above 3000, then on track 357° to cross NANDR at or below 13000, then on assigned transition.

EAKER TRANSITION (NANDR2.EAKER)

MC ALESTER TRANSITION (NANDR2.MLC)

OKMULGEE TRANSITION (NANDR2.OKM)

ROLLS TRANSITION (NANDR2.ROLLS)

TULSA TRANSITION (NANDR2.TUL)

WILL ROGERS TRANSITION (NANDR2.IRW)

ZEMMA TRANSITION (NANDR2.ZEMMA)

SC-2, 22 FEB 2024 to 21 MAR 2024

SC-2, 22 FEB 2024 to 21 MAR 2024

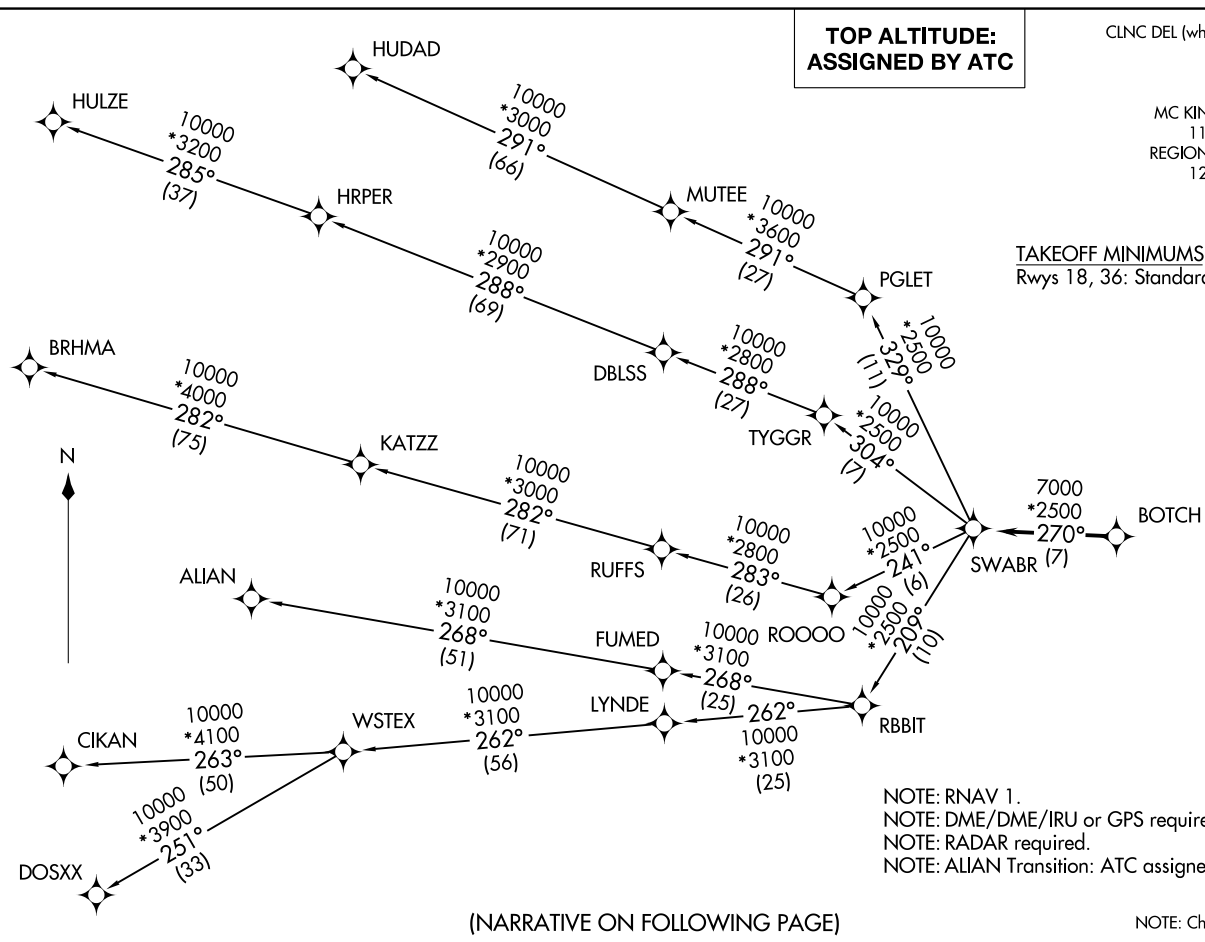
**TOP ALTITUDE:  
ASSIGNED BY ATC**

CLNC DEL (when twr closed)  
121.35  
GND CON  
121.875  
MC KINNEY TOWER \*  
118.825 (CTAF)  
REGIONAL DEP CON  
124.3 282.275

**TAKEOFF MINIMUMS**  
Rwys 18, 36: Standard.

(SWABR1 .SWABR) 22083  
AL-6644 (FAA)

MCKINNEY NTL (TKX)  
DALLAS, TEXAS



NOTE: RNAV 1.  
NOTE: DME/DME/IRU or GPS required.  
NOTE: RADAR required.  
NOTE: ALIAN Transition: ATC assigned only.

(NARRATIVE ON FOLLOWING PAGE)

SWABR ONE DEPARTURE (RNAV)  
(SWABR1 .SWABR) 24MAR22

DALLAS, TEXAS  
MCKINNEY NTL (TKX)

# SWABR ONE DEPARTURE (RNAV)



## DEPARTURE ROUTE DESCRIPTION

When entering controlled airspace, fly heading assigned by ATC, expect vectors to BOTCH, then on track 270° to SWABR, then on assigned transition. Maintain ATC assigned altitude, expect filed altitude 10 minutes after departure.

ALIAN TRANSITION (SWABR1.ALIAN)

BRHMA TRANSITION (SWABR1.BRHMA)

CIKAN TRANSITION (SWABR1.CIKAN)

DOSXX TRANSITION (SWABR1.DOSXX)

HUDAD TRANSITION (SWABR1.HUDAD)

HULZE TRANSITION (SWABR1.HULZE)

WSTEX TRANSITION (SWABR1.WSTEX)

SC-2, 22 FEB 2024 to 21 MAR 2024

SC-2, 22 FEB 2024 to 21 MAR 2024

# TEXOMA FIVE DEPARTURE

REGIONAL DEP CON

124.3 282.275  
CLNC DEL (When twr closed)  
121.35  
GND CON  
121.875  
MC KINNEY TOWER ★  
118.825 (CTAF)

**TOP ALTITUDE:  
ASSIGNED BY ATC**

TULSA  
114.4 TUL :...:  
Chan 91

RADAR and DME required.

WILL ROGERS  
114.1 IRW :...:  
Chan 88

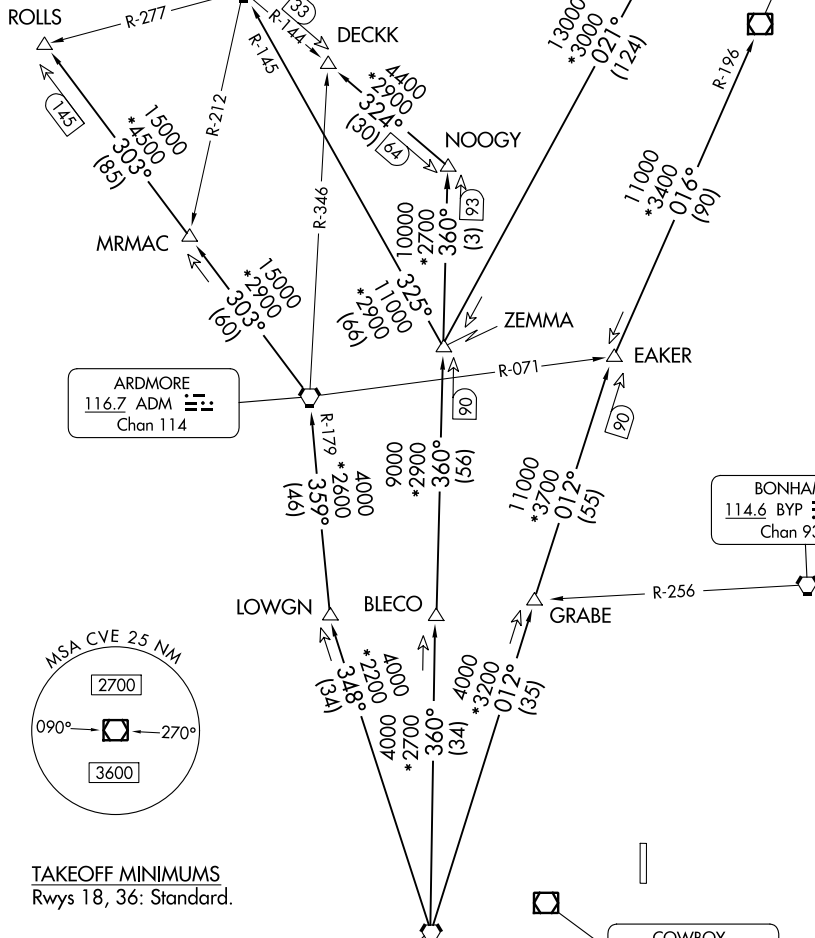
OKMULGEE  
114.9 OKM :...:  
Chan 96

ARDMORE  
116.7 ADM :...:  
Chan 114

BONHAM  
114.6 BYP :...:  
Chan 93

RANGER  
115.7 FUZ :...:  
Chan 104

COWBOY  
116.2 CVE :...:  
Chan 109



(CONTINUED ON FOLLOWING PAGE)

NOTE: Chart not to scale.

SC-2, 22 FEB 2024 to 21 MAR 2024

SC-2, 22 FEB 2024 to 21 MAR 2024

# TEXOMA FIVE DEPARTURE

# TEXOMA FIVE DEPARTURE



## DEPARTURE ROUTE DESCRIPTION

When entering controlled airspace, fly assigned heading for RADAR vectors to appropriate route. Maintain ATC assigned altitude.

ARDMORE TRANSITION (TEX5.ADM): From over FUZ VORTAC on FUZ R-348 to LOWGN, then on ADM R-179 to ADM VORTAC.

BLECO TRANSITION (TEX5.BLECO): From over FUZ VORTAC on FUZ R-360 to BLECO.

DECKK TRANSITION (TEX5.DECKK): From over FUZ VORTAC on FUZ R-360 to NOOGY, then on IRW R-144 to DECKK.

EAKER TRANSITION (TEX5.EAKER): From over FUZ VORTAC on FUZ R-012 to EAKER.

GRABE TRANSITION (TEX5.GRABE): From over FUZ VORTAC on FUZ R-012 to GRABE.

OKMULGEE TRANSITION (TEX5.OKM): From over FUZ VORTAC on FUZ R-012 to EAKER, then on OKM R-196 to OKM VOR/DME.

ROLLS TRANSITION (TEX5.ROLLS): From over FUZ VORTAC on FUZ R-348 to LOWGN, then on ADM R-179 to ADM VORTAC, then on ADM R-303 to ROLLS.

TULSA TRANSITION (TEX5.TUL): From over FUZ VORTAC on FUZ R-360 to ZEMMA, then on TUL R-201 to TUL VORTAC.

WILL ROGERS TRANSITION (TEX5.IRW): From over FUZ VORTAC on FUZ R-360 to ZEMMA, then on IRW R-145 to IRW VORTAC.

ZEMMA TRANSITION (TEX5.ZEMMA): From over FUZ VORTAC on FUZ R-360 to ZEMMA.

NOTE: BLECO Transition: ATC assigned.

NOTE: DECKK Transition: For all aircraft inbound to the Oklahoma City area.

NOTE: EAKER Transition: For aircraft inbound to the Tulsa terminal area.

NOTE: GRABE Transition: ATC assigned.

NOTE: OKMULGEE Transition: For all aircraft overflying OKM VOR/DME proceeding on J181 to BDF to destinations in the Chicago terminal area and north.

NOTE: TULSA Transition: For all aircraft overflying TUL VORTAC.

NOTE: WILL ROGERS Transition: For all aircraft overflying IRW VORTAC.

SC-2, 22 FEB 2024 to 21 MAR 2024

SC-2, 22 FEB 2024 to 21 MAR 2024



WORTH ONE DEPARTURE  
(WORTH1.TTT) 251AN24

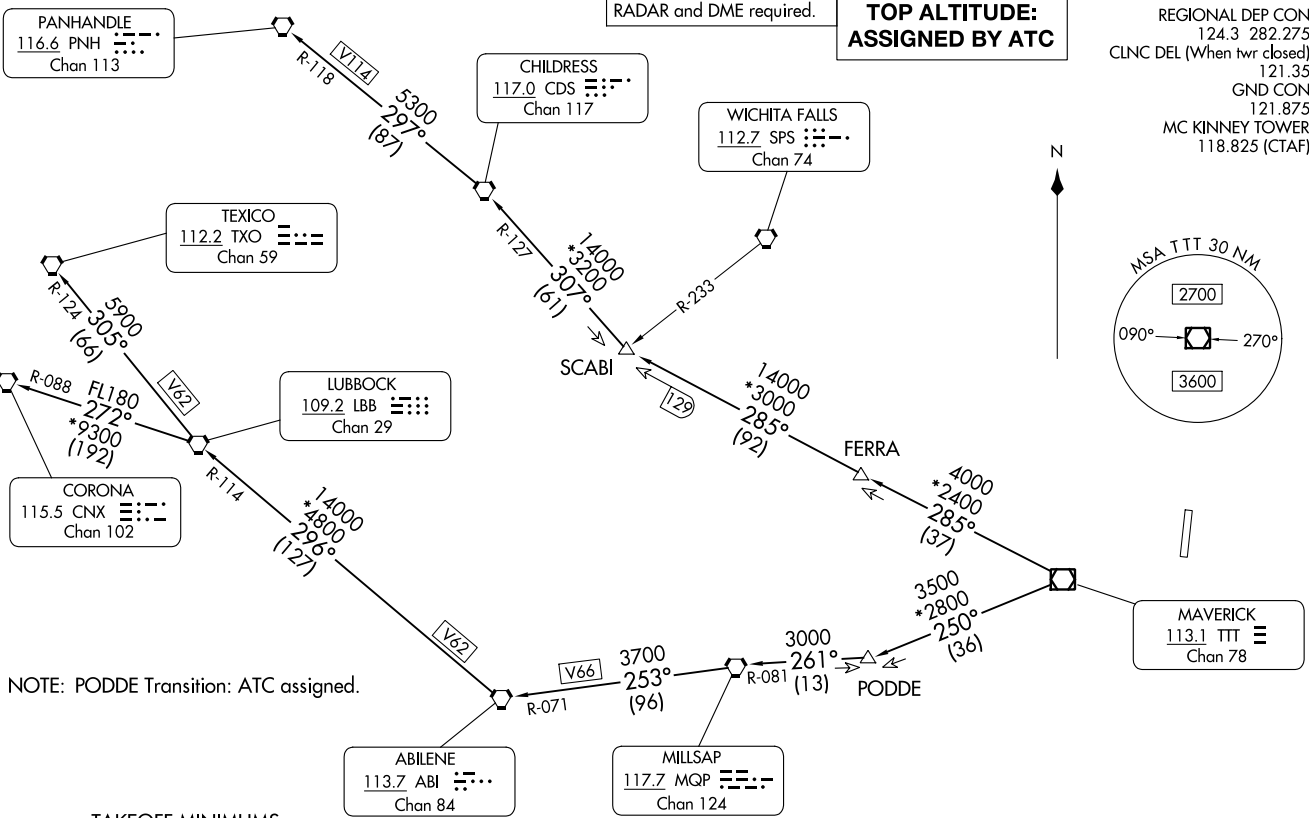
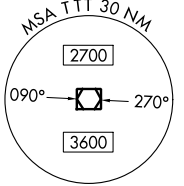
WORTH ONE DEPARTURE  
(WORTH1.TTT) 24025

AL6644 (FAA)

MCKINNEY NTL (TKI)  
DALLAS, TEXAS

**TOP ALTITUDE:  
ASSIGNED BY ATC**

REGIONAL DEP CON  
124.3 282.275  
CLNC DEL (When twr closed)  
121.35  
GND CON  
121.875  
MC KINNEY TOWER★  
118.825 (CTAF)



NOTE: PODDE Transition: ATC assigned.

TAKEOFF MINIMUMS  
Rwys 18, 36: Standard.

RADAR and DME required.

(CONTINUED ON FOLLOWING PAGE)

NOTE: Chart not to scale.

DALLAS, TEXAS  
MCKINNEY NTL (TKI)

# WORTH ONE DEPARTURE



## DEPARTURE ROUTE DESCRIPTION

When entering controlled airspace, fly assigned heading for RADAR vectors to appropriate route. Maintain ATC assigned altitude.

ABILENE TRANSITION (WORTH1.ABI): From over TTT VOR/DME on TTT R-250 to PODDE, then on MQP R-081 to MQP VORTAC, then on MQP R-253 and ABI R-071 to ABI VORTAC.

CHILDRESS TRANSITION (WORTH1.CDS): From over TTT VOR/DME on TTT R-285 to SCABI, then on CDS R-127 to CDS VORTAC.

CORONA TRANSITION (WORTH1.CNX): From over TTT VOR/DME on TTT R-250 to PODDE, then on MQP R-081 to MQP VORTAC, then on MQP R-253 and ABI R-071 to ABI VORTAC, then on ABI R-296 and LBB R-114 to LBB VORTAC, then on LBB R-272 and CNX R-088 to CNX VORTAC.

LUBBOCK TRANSITION (WORTH1.LBB): From over TTT VOR/DME on TTT R-250 to PODDE, then on MQP R-081 to MQP VORTAC, then on MQP R-253 and ABI R-071 to ABI VORTAC, then on ABI R-296 and LBB R-114 to LBB VORTAC.

PANHANDLE TRANSITION (WORTH1.PNH): From over TTT VOR/DME on TTT R-285 to SCABI, then on CDS R-127 to CDS VORTAC, then on CDS R-297 and PNH R-118 to PNH VORTAC.

PODDE TRANSITION (WORTH1.PODDE): From over TTT VOR/DME on TTT R-250 to PODDE.

TEXICO TRANSITION (WORTH1.TXO): From over TTT VOR/DME on TTT R-250 to PODDE, then on MQP R-081 to MQP VORTAC, then on MQP R-253 and ABI R-071 to ABI VORTAC, then on ABI R-296 and LBB R-114 to LBB VORTAC, then on LBB R-305 and TXO R-124 to TXO VORTAC.

SC-2, 22 FEB 2024 to 21 MAR 2024

SC-2, 22 FEB 2024 to 21 MAR 2024

# WORTH ONE DEPARTURE

(WORTH1.TTT) 25JAN24