

RUUDY SIX DEPARTURE (RNAV)  
(RUUDY6.RUUDY) 17AUG17

D-ATIS  
114.2 132.85  
CLNC DEL  
128.05  
CPDLC  
GND CON  
121.9  
TETERBORO TOWER  
119.5  
NEW YORK DEP CON  
119.2 126.7 379.9

HUGUENOT  
HUO

GAYEL

HAAYS

NEION

STILLWATER  
STW

COATE

SPARTA  
SAX

NEWEL

ELIOT

ZIMMZ

PARKE

LANNA

BIGGY

SOLBERG  
SBJ

ELVAE

COLTS NECK  
COL

DIXIE

WHITE

NOTE: DME/DME/IRU or GPS required.  
NOTE: RADAR required.  
NOTE: RNAV 1.  
NOTE: BAYYS Departures expect vectors to BDR VOR/DME/BAYYS.  
NOTE: BIGGY Departures expect vectors to SBJ VOR/DME/BIGGY.  
NOTE: COATE Departures expect vectors to SAX VORTAC/COATE.  
NOTE: DIXIE Departures expect vectors to ELVAE/COL VOR/DME/DIXIE.  
NOTE: HAAYS Departures expect vectors to HUO VOR/DME/HAAYS.  
NOTE: WHITE Departures expect vectors to ELVAE/COL VOR/DME/WHITE.

TOP ALTITUDE:  
2000

GREKI

MERIT

BAYYS

CARMEL  
CMK

BRIDGEPORT  
BDR

BREZY



RUUDY

WENTZ  
1500

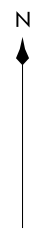
DAVIM

KENNEDY  
JFK

SHIPP

WAVEY

Note: Chart not to scale.



TAKEOFF MINIMUMS:

Rwys 1, 6, 19: NA-ATC.

Rwy 24: Standard with minimum  
climb of 500' per NM to 520.  
If unable to accept climb rate,  
advise ATC on initial contact.

DEPARTURE ROUTE DESCRIPTION

TAKEOFF RWY 24: Climb heading 240° to 520, then  
direct DAVIM, then on track 262° to cross WENTZ at 1500,  
then on track 283° to RUUDY, then on heading 280° or as  
assigned by ATC, thence . . . .

. . . . expect vectors to assigned route/fix. Maintain 2000;  
expect clearance to filed altitude ten minutes after departure.

(RUUDY6.RUUDY) 22335  
RUUDY SIX DEPARTURE (RNAV)

AL-890 (FAA)

TETERBORO (TEJB)  
TETERBORO, NEW JERSEY

TETERBORO, NEW JERSEY  
TETERBORO (TEJB)

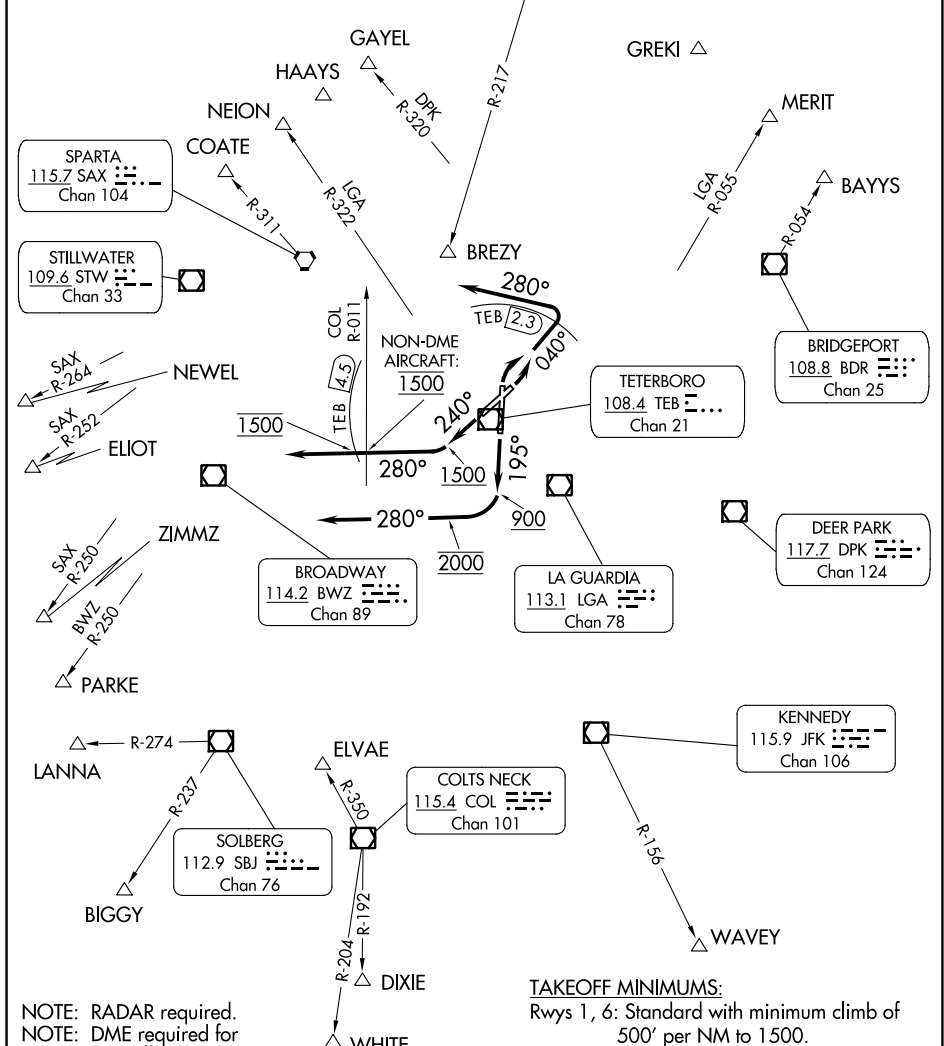
# TETERBORO FOUR DEPARTURE

D-ATIS  
114.2 132.85  
CLNC DEL 128.05  
CPDLC  
GND CON 121.9  
TETERBORO TOWER  
119.5  
NEW YORK DEP CON  
119.2 126.7 379.9

HUGENOT  
116.1 HHO  
Chan 108

**TOP ALTITUDE:  
2000**

KINGSTON  
117.6 IGN  
Chan 123



NE-2, 22 FEB 2024 to 21 MAR 2024

NE-2, 22 FEB 2024 to 21 MAR 2024

NOTE: RADAR required.  
NOTE: DME required for  
Takeoff Rwy 1, 6.  
NOTE: GPS required for  
GREKI Departures.

**TAKEOFF MINIMUMS:**  
Rwys 1, 6: Standard with minimum climb of  
500' per NM to 1500.  
Rwy 19: 600-2¼ or Standard with minimum  
climb of 352' per NM to 700.  
Rwy 24: 400-1¾ or Standard with minimum  
climb of 463' per NM to 1500.

Note: Chart not to scale.

# TETERBORO FOUR DEPARTURE

# TETERBORO FOUR DEPARTURE



## DEPARTURE ROUTE DESCRIPTION

TAKEOFF RUNWAY 1: Climbing right turn heading 040° to TEB 2.3 DME, then turn left heading 280°, maintain 2000, thence . . . .

TAKEOFF RUNWAY 6: Climbing left turn heading 040° to TEB 2.3 DME, then turn left heading 280°, maintain 2000, thence . . . .

TAKEOFF RUNWAY 19: Climb on heading 195° to 900, then climbing right turn to 2000 heading 280°, maintain 2000 (do not climb above 2000), thence . . . .

TAKEOFF RUNWAY 24: Climb on heading 240° to 1500 (do not climb above 1500), then turn right heading 280°, cross TEB 4.5 DME at 1500 (non-DME aircraft cross COL R-011 at 1500), then climb and maintain 2000, thence . . . .

. . . . as per notes or via vector to assigned route/fix. Expect clearance to filed altitude/flight level ten minutes after departure.

### PROCEDURAL NOTES:

BAYYS Departures expect vectors to BDR/BDR R-054.

BIGGY Departures expect vectors to SBJ/SBJ R-237.

BREZY Departures expect vectors to IGN R-217 to BREZY.

COATE Departures expect vectors to SAX/SAX R-311.

ELIOT Departures expect vectors to SAX R-252. ELIOT authorized for all aircraft types but restricted to a final altitude of 14000 to 16000.

GAYEL Departures expect vectors to DPK R-320.

HAAYS Departures expect vectors to HUO.

LANNA Departures expect vectors to SBJ/SBJ R-274.

MERIT Departures expect vectors to LGA R-055.

NEION Departures expect vectors to LGA R-322.

NEWEL Departures expect vectors to SAX R-264. NEWEL authorized only for jet aircraft requesting a final altitude of FL180 and above.

PARKE Departures expect vectors to BWZ R-250.

WAVEY Departures expect vectors to JFK/JFK R-156.

WHITE/DIXIE Departures expect vectors to COL R-350 or ELVAE/COL. Thence WHITE on COL R-204 or DIXIE on COL R-192.

ZIMMZ Departures expect vectors to SAX R-250. ZIMMZ authorized for all aircraft types but restricted to final altitude of FL180 and above.

NE-2, 22 FEB 2024 to 21 MAR 2024

NE-2, 22 FEB 2024 to 21 MAR 2024

# TETERBORO FOUR DEPARTURE