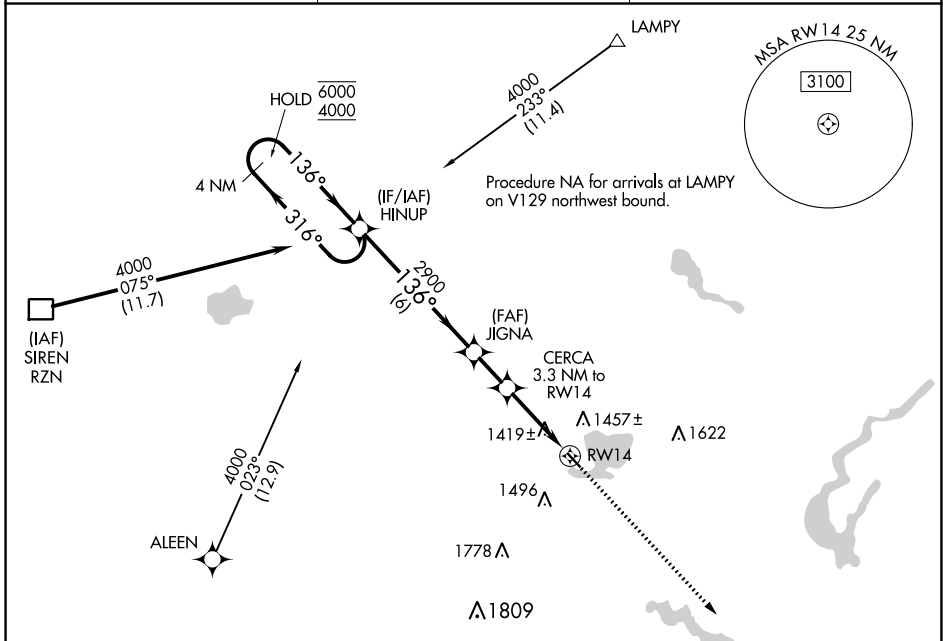


APP CRS	Rwy Idg	<b>2881</b>
<b>136°</b>	TDZE	<b>1233</b>
	Apt Elev	<b>1233</b>

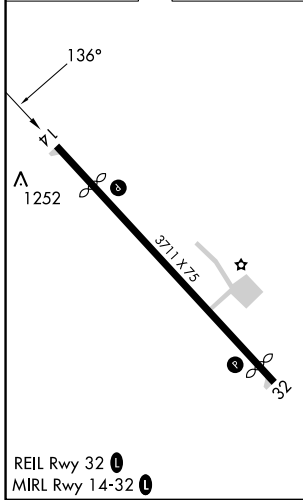
# RNAV (GPS) RWY 14

SHELL LAKE MUNI (SSQ)

RNP APCH.		MISSED APPROACH: Climb to 4000 direct QESCA and hold.
Procedure NA at night. Rwy 14 helicopter visibility reduction below 1 SM NA. Use Cumberland altimeter setting.		
UBE AWOS-3PT <b>119.175</b>	MINNEAPOLIS CENTER <b>126.45 276.4</b>	UNICOM <b>122.8 (CTAF)</b>



ELEV	1233	<b>D</b>	TDZE	1233
------	------	----------	------	------



4 NM Holding Pattern		VGSI and descent angles not coincident (VGSI Angle 4.00/TCH 22).		4000	QESCA
6000 ← 316° 4000 → 136°		JIGNA 2900		↑	△
		CERCA 2320 3.04° TCH 40		RWY 14	
		6 NM      1.7 NM      3.3 NM			
CATEGORY	A	B	C	D	
LNAV MDA	1740-1 507 (600-1)		1740-1½ 507 (600-1½)		
CIRCLING	1840-1 607 (700-1)		1840-1¾ 607 (700-1¾) 2020-2½ 787 (800-2½)		

EC-3, 22 FEB 2024 to 21 MAR 2024

EC-3, 22 FEB 2024 to 21 MAR 2024

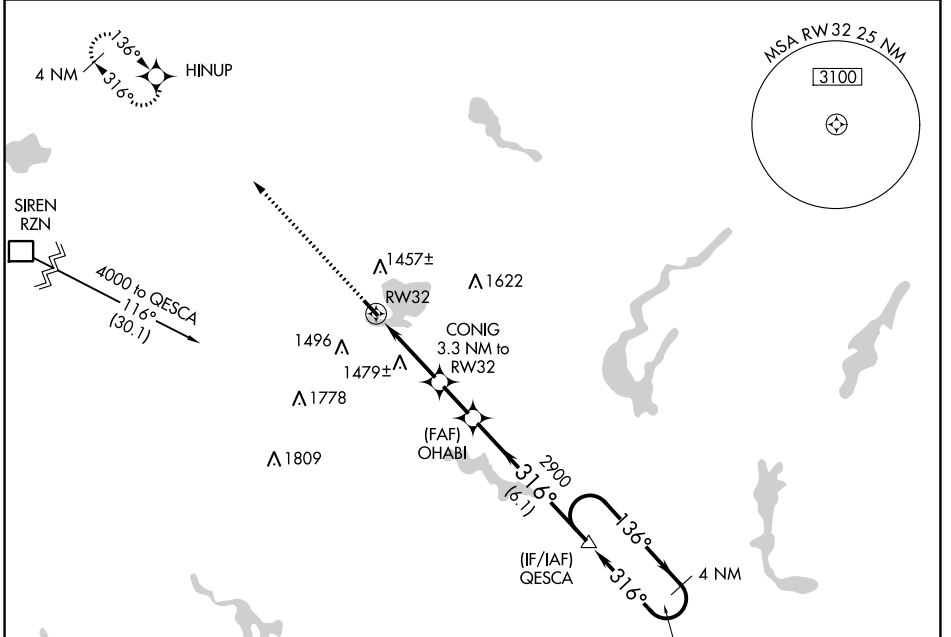
APP CRS	Rwy Idg	<b>3500</b>
<b>316°</b>	TDZE	<b>1233</b>
	Apt Elev	<b>1233</b>

# RNAV (GPS) RWY 32

SHELL LAKE MUNI (SSQ)

RNP APCH.	<p>Procedure NA at night. Rwy 32 helicopter visibility reduction below 1 SM NA.          Use Cumberland altimeter setting.</p>	MISSED APPROACH: Climb to 4000 direct HINUP and hold.
-----------	--	---

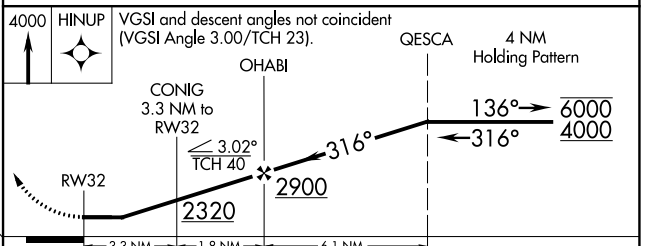
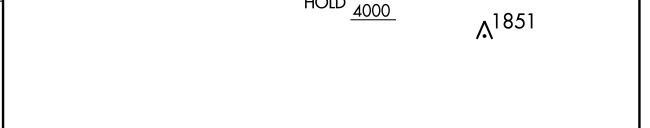
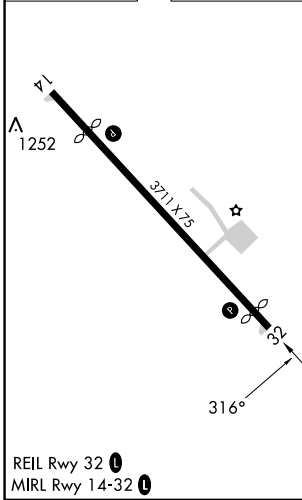
UBE AWOS-3PT <b>119.175</b>	MINNEAPOLIS CENTER <b>126.45 276.4</b>	UNICOM <b>122.8 (CTAF)</b>
--------------------------------	---	-------------------------------



EC-3, 22 FEB 2024 to 21 MAR 2024

EC-3, 22 FEB 2024 to 21 MAR 2024

ELEV 1233	<b>D</b>	TDZE 1233
-----------	----------	-----------



CATEGORY	A	B	C	D
LNAV MDA	1800-1 567 (600-1)	1800-1 5/8 567 (600-1 5/8)	1800-1 3/4 567 (600-1 3/4)	1800-1 3/4 567 (600-1 3/4)
CIRCLING	1840-1 607 (700-1)	1840-1 3/4 607 (700-1 3/4)	2020-2 1/2 787 (800-2 1/2)	