

LOC/DME I-SPA 109.1 Chan 28	APP CRS 047°	Rwy Idg TDZE Apt Elev	5852 802 802
--	------------------------	-----------------------------	---

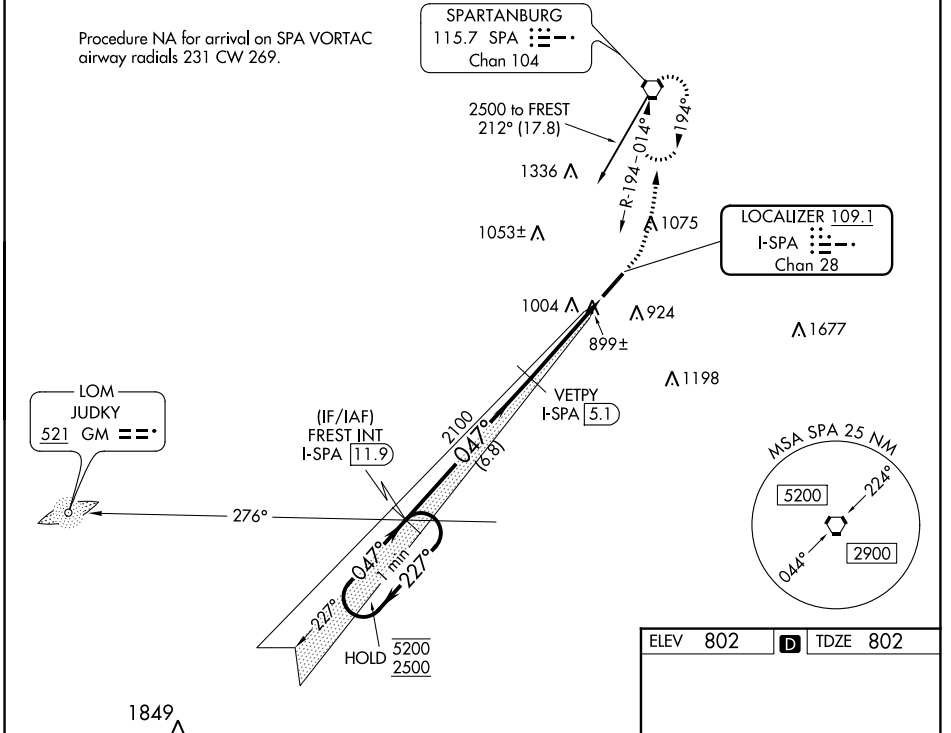
ILS or LOC RWY 5

SPARTANBURG DOWNTOWN MEML/SIMPSON FLD (SPA)

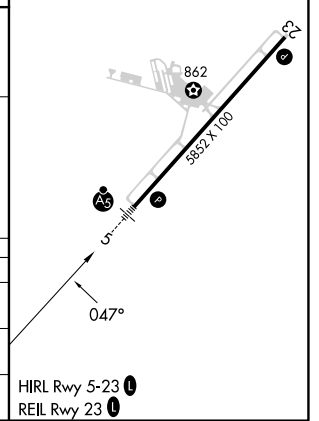
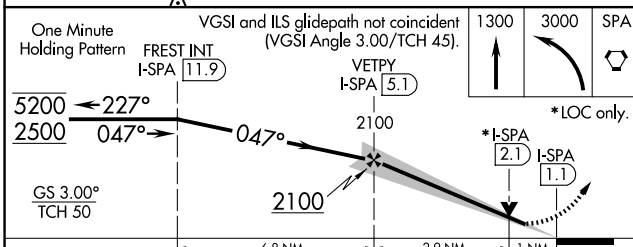
DME required.	MALS R	MISSED APPROACH: Climb to 1300 then climbing left turn to 3000 direct SPA VORTAC and hold, continue climb-in-hold to 3000.
V A For inop ALS, increase S-LOC 5 Cats C/D visibility to 1 SM.	A5	

AWOS-3 133.925	GREER APP CON * 119.4 350.2	CLNC DEL 120.55	UNICOM 123.0 (CTAF) U
--------------------------	---------------------------------------	---------------------------	--

Procedure NA for arrival on SPA VORTAC airway radials 231 CW 269.



ELEV 802	D TDZE 802
----------	-------------------



CATEGORY	A	B	C	D
S-ILS 5		1002- ³ / ₄	200 (200- ³ / ₄)	
S-LOC 5		1160- ³ / ₄	358 (400- ³ / ₄)	
C CIRCLING	1320-1	518 (600-1)	1380-1 ¹ / ₂ 578 (600-1 ¹ / ₂)	1420-2 618 (700-2)

ILS or LOC RWY 5

SE-2, 22 FEB 2024 to 21 MAR 2024

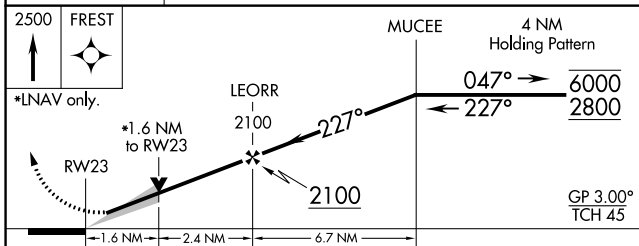
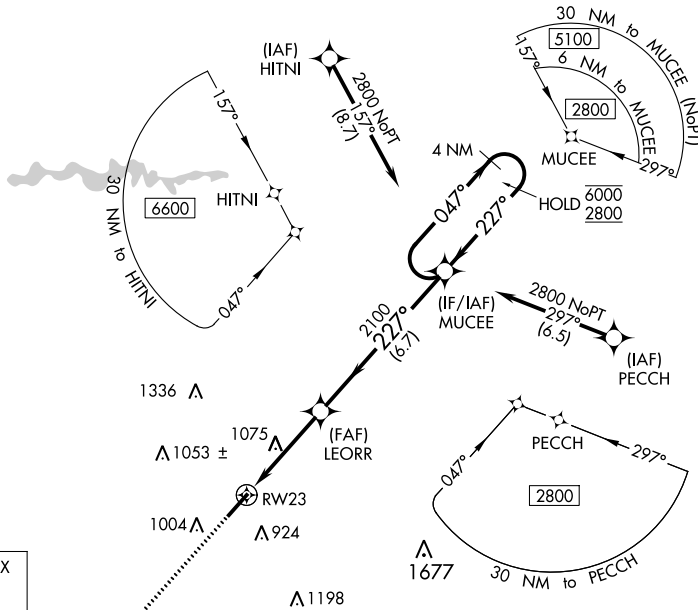
SE-2, 22 FEB 2024 to 21 MAR 2024

WAAS CH 65926 W23A	APP CRS 227°	Rwy Idg TDZE Apt Elev	5452 801 802
--	------------------------	-----------------------------	---

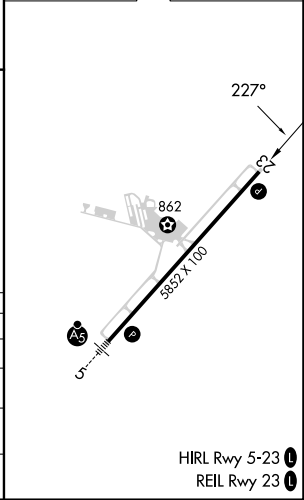
RNAV (GPS) RWY 23

SPARTANBURG DOWNTOWN MEML/SIMPSON FLD (SPA)

RNP APCH.		MISSED APPROACH: Climb to 2500 direct FREST and hold.	
<p>▼ For uncompensated Baro-VNAV systems, LNAV/VNAV NA below -16°C or above 54°C.</p>			
AWOS-3 133,925	GREER APP CON * 119.4 350.2	CLNC DEL 120.55	UNICOM 123.0 (CTAF) 1



ELEV 802	D TDZE 801
----------	-------------------



CATEGORY	A	B	C	D
LPV DA		1001- ³ / ₄	200 (200- ³ / ₄)	
LNAV/VNAV DA		1090- ⁷ / ₈	289 (300- ⁷ / ₈)	
LNAV MDA	1340-1	539 (600-1)	1340-1 ¹ / ₂	539 (600-1 ¹ / ₂)
C CIRCLING	1340-1	538 (600-1)	1380-1 ¹ / ₂ 578 (600-1 ¹ / ₂)	1420-2 618 (700-2)

HIRL Rwy 5-23 **1**
REIL Rwy 23 **1**

RNAV (GPS) RWY 23

SE-2, 22 FEB 2024 to 21 MAR 2024

SE-2, 22 FEB 2024 to 21 MAR 2024

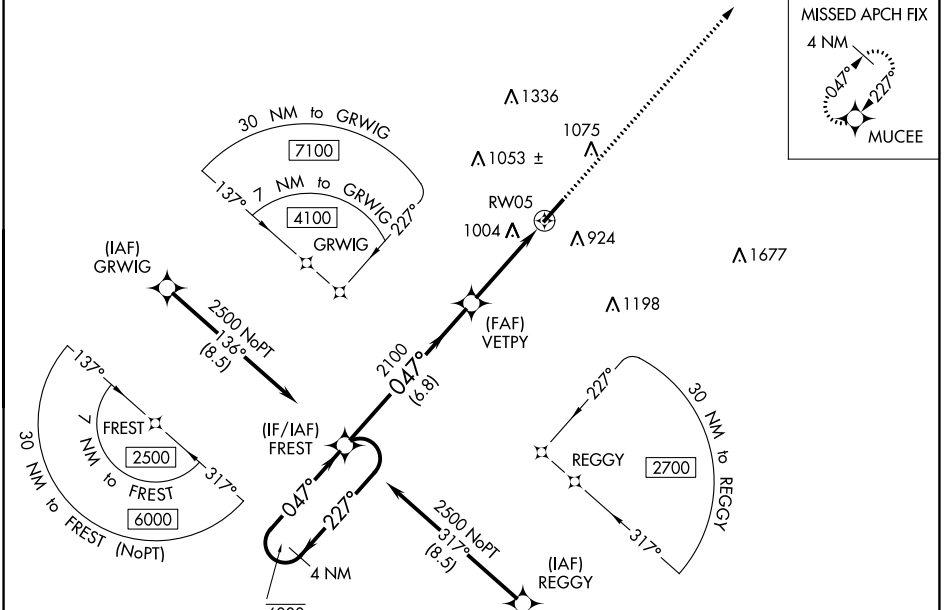
WAAS CH 61226 W05A	APP CRS 047°	Rwy Idg TDZE Apt Elev	5852 802 802
--	------------------------	-----------------------------	---

RNAV (GPS) RWY 5

SPARTANBURG DOWNTOWN MEML/SIMPSON FLD (SP A)

RNP APCH-GPS. For uncompensated Baro-VNAV systems, LNAV/VNAV NA below -16°C or above 54°C.		MALSR 	MISSED APPROACH: Climb to 2800 direct MUCEE and hold.
--	--	------------------	--

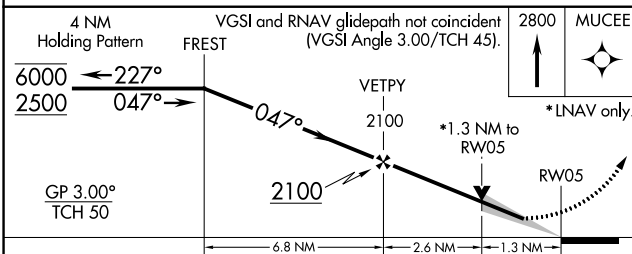
AWOS-3 133.925	GREER APP CON * 119.4 350.2	CLNC DEL 120.55	UNICOM 123.0 (CTAF)
--------------------------	---------------------------------------	---------------------------	-------------------------------



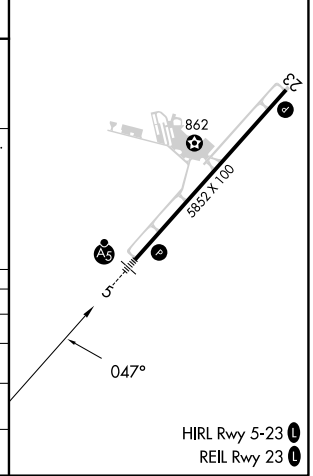
SE-2, 22 FEB 2024 to 21 MAR 2024

SE-2, 22 FEB 2024 to 21 MAR 2024

ELEV 802	TDZE 802
----------	----------



CATEGORY	A	B	C	D
LPV DA		1002- ³ / ₄	200 (200- ³ / ₄)	
LNNAV/VNAV DA		1260- ⁷ / ₈	458 (500- ⁷ / ₈)	
LNNAV MDA	1260- ³ / ₄	458 (500- ³ / ₄)	1260- ⁷ / ₈	458 (500- ⁷ / ₈)
CIRCLING	1320-1	518 (600-1)	1380-1 ¹ / ₂ 578 (600-1 ¹ / ₂)	1420-2 618 (700-2)



RNAV (GPS) RWY 5