

SAVANNAH, GEORGIA

HI-ILS or LOC RWY 10

LOC I-SAV 111.35 Chan 106 (V)	APCH CRS 097°	Rev./Idg TDZE Appr Elev	9351 30 30
--	-------------------------	-------------------------------	---------------------------------------

AL-380 (USAF)

SAVANNAH/HILTON HEAD INTL (KSAV)

▼ Procedure NA when Control Tower closed.
* When ALS Inop, increase VIS to RVR 40.
** When ALS Inop, increase VIS to 1 1/2 miles.



MAISR
MISSED APPROACH: Climb to 800, then climbing left turn to 4000 via heading 330° and SAV VORTAC R-001 to TILTS/SAV 20 DME and hold.

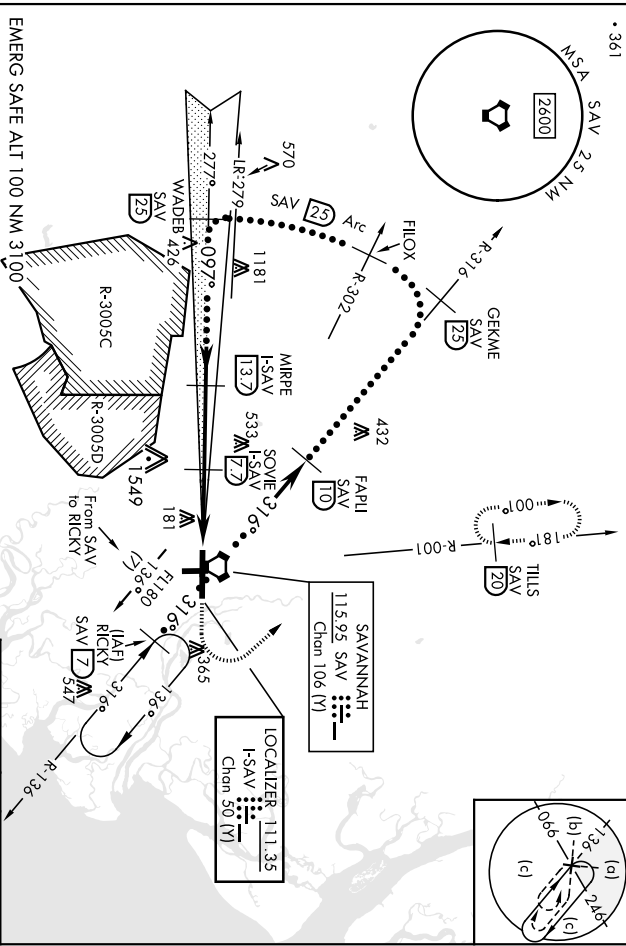
ATIS * 123.75	APP CON 125.3 353.775
-------------------------	---------------------------------

TOWER *	125.975 (CTAF) 257.8
----------------	------------------------------------

GND CON	121.9 348.6
----------------	--------------------

CINC DEL	119.55 291.775
-----------------	-----------------------

• 361

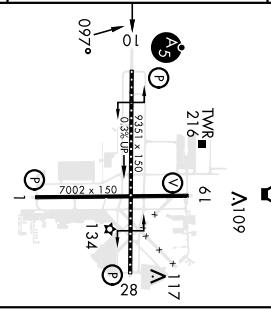


EMERG SAFE ALT 100 NM 3100
Use I-SAV DME when on the localizer course.
VGSI and ILS glidepath not coincident.
VGSI angle 3.00/TCH 69.



ELEV 50	D	TDZE 30
----------------	----------	----------------

FLOX GEKME R-302 5000	WADER R-316 10,000	MIRPE H-SAV 137	SOVIE H-SAV 17	FAPUI H-SAV 10	VORTAC R-001 10	RICKY R-136 20
SS 3.00° TCH 30	AI5 5000	AI3 2600	AI7 1928	AI10 2200	AI180 2000	AI180 316°
CATEGORY	C	D	E			
S-ILS 10 *	230/18	200	(200-54)			
S-LOC 10 **	500/50	470	(500-1)			
CIRCLING	740-2 690 (700-2)	740-2 1/4 690 (700-2 1/4)	900-3 850 (900-3)			



SAVANNAH, GEORGIA

SAVANNAH/HILTON HEAD INTL (KSAV)

Amch 8 08NOV18

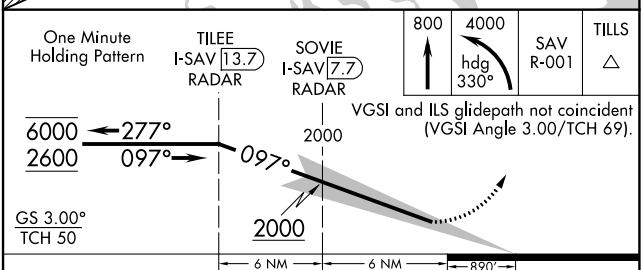
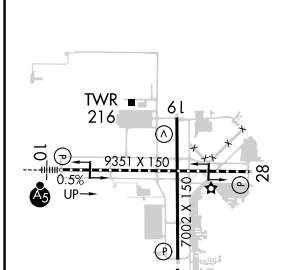
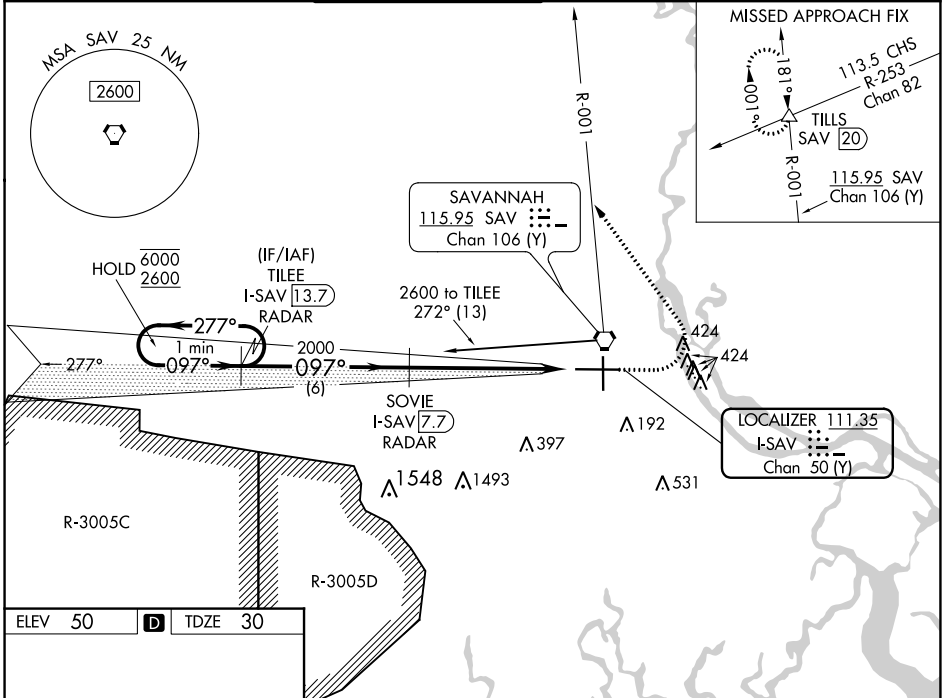
HI-ILS or LOC RWY 10

LOC I-SAV 111.35	APP CRS 097°	Rwy Idg TDZE Apt Elev	9351 30 50
Chan 50 (Y)			

ILS RWY 10 (SA CAT I & II)
SAVANNAH/HILTON HEAD INTL (SAV)

DME required.	MALSR	MISSED APPROACH: Climb to 800 then climbing left turn to 4000 on heading 330° and SAV VORTAC R-001 to TILLS INT/SAV 20 DME and hold.
<p>▼ SA CAT I: Requires specific OPSPEC, MSPEC, or LOA approval and use of HUD to DH. SA CAT II: Reduced lighting: Requires specific OPSPEC, MSPEC, or LOA approval and use of autoland or HUD to touchdown. Procedure NA when tower closed.</p>		

ATIS 123.75	SAVANNAH APP CON* 125.3 371.875	SAVANNAH TOWER* 125.975 (CTAF) 257.8	GND CON 121.9 348.6	CLNC DEL 119.55 291.775	UNICOM 122.95
-----------------------	---	--	-------------------------------	-----------------------------------	-------------------------



CATEGORY	A	B	C	D
S-ILS 10	SA CAT I	RA 162/14	150 DA 180	
S-ILS 10	SA CAT II	RA 116/12	100 DA 130	

SA CATEGORY I & II ILS - SPECIAL AIRCREW & AIRCRAFT CERTIFICATION REQUIRED

SE-4, 22 FEB 2024 to 21 MAR 2024

SE-4, 22 FEB 2024 to 21 MAR 2024

LOC I-TPV 111.9	APP CRS 006°	Rwy Idg 7002
		TDZE 39
		Apt Elev 50

ILS or LOC RWY 1

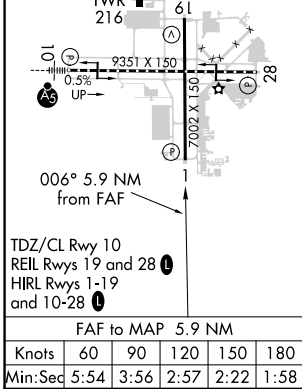
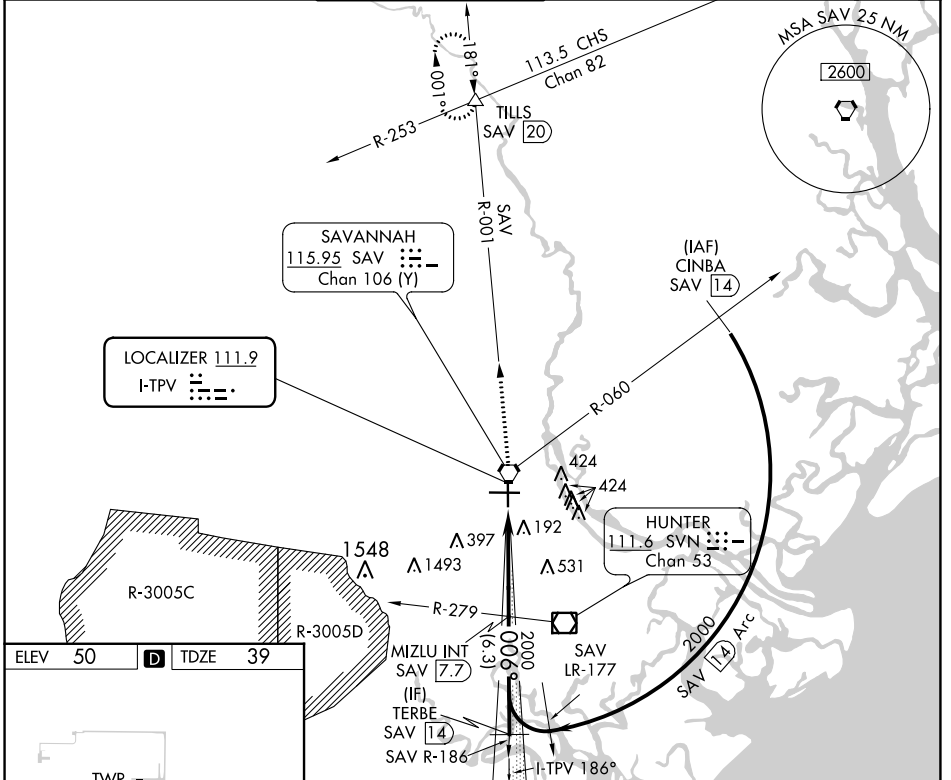
SAVANNAH/HILTON HEAD INTL (SAV)

DME or RADAR required for procedure entry.

▽ Autopilot coupled approach NA below 600.

▲ MISSED APPROACH: Climb to 1000 then climb to 4000 on SAV VORTAC R-001 to TILLS INT/SAV 20 DME and hold.

ATIS 123.75	SAVANNAH APP CON* 120.4 353.775	SAVANNAH TOWER* 125.975 (CTAF) 0 257.8	GND CON 121.9 348.6	CLNC DEL 119.55 291.775	UNICOM 122.95
-----------------------	---	--	-------------------------------	-----------------------------------	-------------------------



1000	4000	TILLS SAV R-001	VGSI and ILS glidepath not coincident (VGSI Angle 3.00/TCH 74).	TERBE SAV 14
*LOC Only.		SAV 1.8	*SAV 3	2000
		1.2 NM	4.7 NM	6.3 NM
CATEGORY	A	B	C	D
S-ILS 1	239/40		200 (200-¾)	
S-LOC 1	480/55	441 (500-1)	480-1⅓	441 (500-1⅓)
☑ CIRCLING	520-1	470 (500-1)	740-2	740-2¼
			690 (700-2)	690 (700-2¼)

SE-4, 22 FEB 2024 to 21 MAR 2024

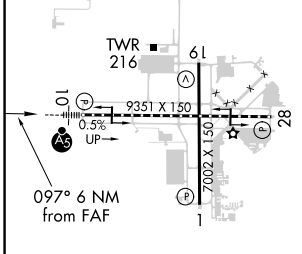
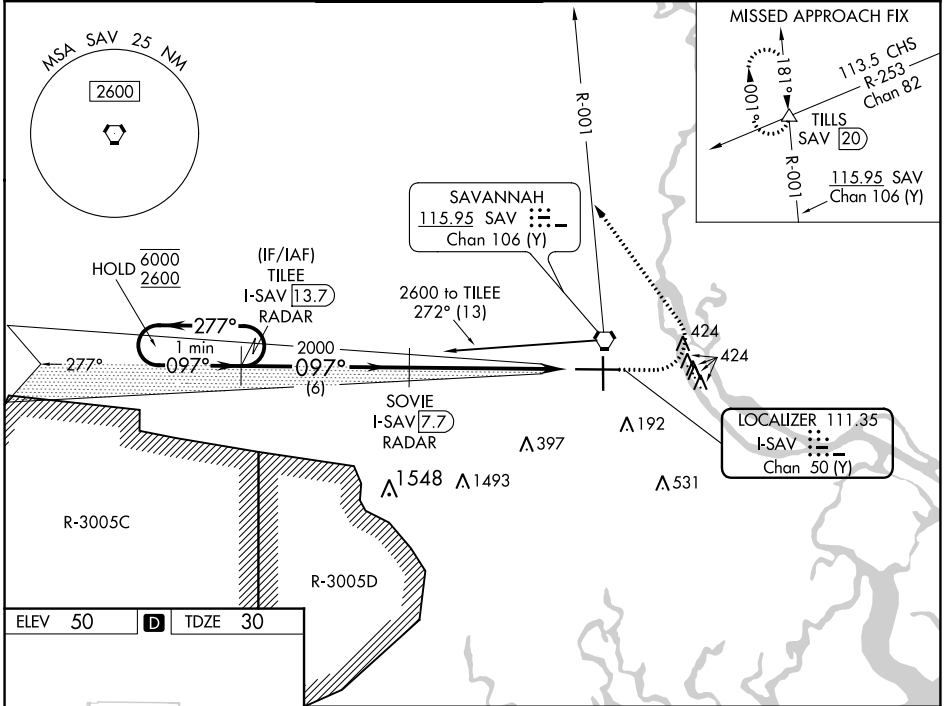
SE-4, 22 FEB 2024 to 21 MAR 2024

LOC I-SAV 111.35	APP CRS 097°	Rwy Idg TDZE Apt Elev	9351 30 50
Chan 50 (Y)			

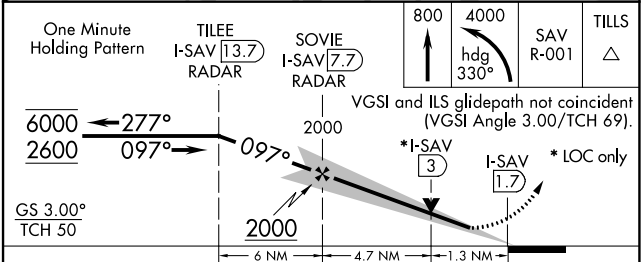
ILS or LOC RWY 10

SAVANNAH/HILTON HEAD INTL (SAV)

DME required.		MALSR	MISSED APPROACH: Climb to 800 then climbing left turn to 4000 on heading 330° and SAV VORTAC R-001 to TILLS INT/SAV 20 DME and hold.		
<p>For inop ALS, increase S-LOC 10 Cat C/D visibility to 1 3/8 SM.</p>					
ATIS 123.75	SAVANNAH APP CON* 125.3 371.875	SAVANNAH TOWER* 125.975 (CTAF) 257.8	GND CON 121.9 348.6	CLNC DEL 119.55 291.775	UNICOM 122.95



ELEV 50	D	TDZE 30
<p>TWR 216</p> <p>0.97° 6 NM from FAF</p> <p>9351 X 150</p> <p>0.5%</p> <p>61</p>		
<p>TDZ/CL Rwy 10</p> <p>REIL Rws 19 and 28</p> <p>HIRL Rws 1-19 and 10-28</p>		



One Minute Holding Pattern	TILES I-SAV 13.7 RADAR	SOVIE I-SAV 7.7 RADAR	800	4000	TILLS SAV R-001
6000 2600	277° 097°	2000	↑	hdg. 330°	△
GS 3.00° TCH 50	097°	2000	VGSi and ILS glidepath not coincident (VGSI Angle 3.00/TCH 69).		
			* I-SAV 3	* I-SAV 1.7	* LOC only
	6 NM	4.7 NM	1.3 NM		
CATEGORY	A	B	C	D	
S-ILS 10	230/18 200 (200-1/2)				
S-LOC 10	500/24	470 (500-1/2)	500/50	470 (500-1)	
C CIRCLING	520-1	470 (500-1)	740-2 690 (700-2)	740-2 1/4 690 (700-2 1/4)	

SE-4, 22 FEB 2024 to 21 MAR 2024

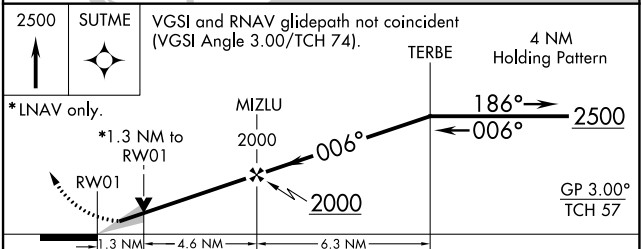
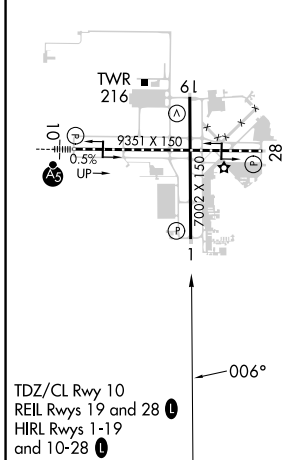
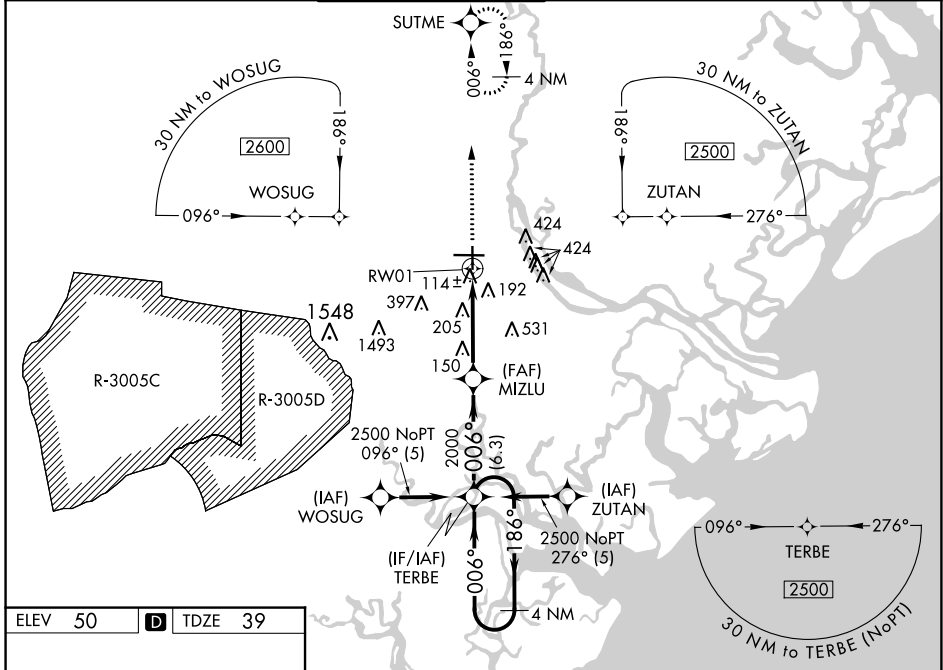
SE-4, 22 FEB 2024 to 21 MAR 2024

WAAS CH 45515 W01A	APP CRS 006°	Rwy Idg 7002 TDZE 39 Apt Elev 50
---------------------------------	------------------------	---

RNAV (GPS) RWY 1

SAVANNAH/HILTON HEAD INTL (SAV)

RNP APCH.		<p>▼ For uncompensated Baro-VNAV systems, LNAV/VNAV NA below -1.5°C (5°F) or above 49°C (120°F).</p> <p>▲ MISSED APPROACH: Climb to 2500 direct SUTME and hold.</p>			
ATIS 123.75	SAVANNAH APP CON* 120.4 353.775	SAVANNAH TOWER* 125.975 (CTAF) 0 257.8	GND CON 121.9 348.6	CLNC DEL 119.55 291.775	UNICOM 122.95



CATEGORY	A	B	C	D
LPV DA	239/40		200 (200-3/4)	
LNAV/VNAV DA	384/60		345 (400-1 1/4)	
LNAV MDA	520/55	481 (500-1)	520-1 3/8	481 (500-1 3/8)
C CIRCLING	520-1	470 (500-1)	740-2 690 (700-2)	740-2 1/4 690 (700-2 1/4)

SE-4, 22 FEB 2024 to 21 MAR 2024

SE-4, 22 FEB 2024 to 21 MAR 2024

WAAS CH 90114	APP CRS 097°	Rwy Idg TDZE Apt Elev	9351 30 50
-------------------------	------------------------	-----------------------------	---------------------------------------

RNAV (GPS) RWY 10

SAVANNAH/HILTON HEAD INTL (SAV)

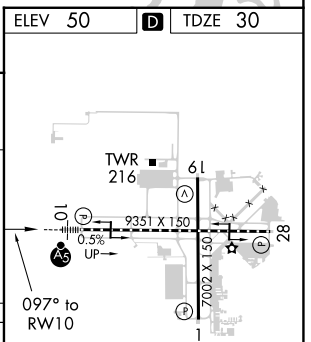
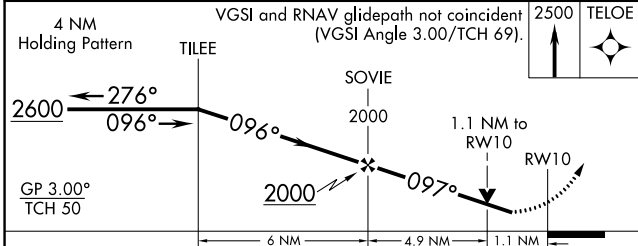
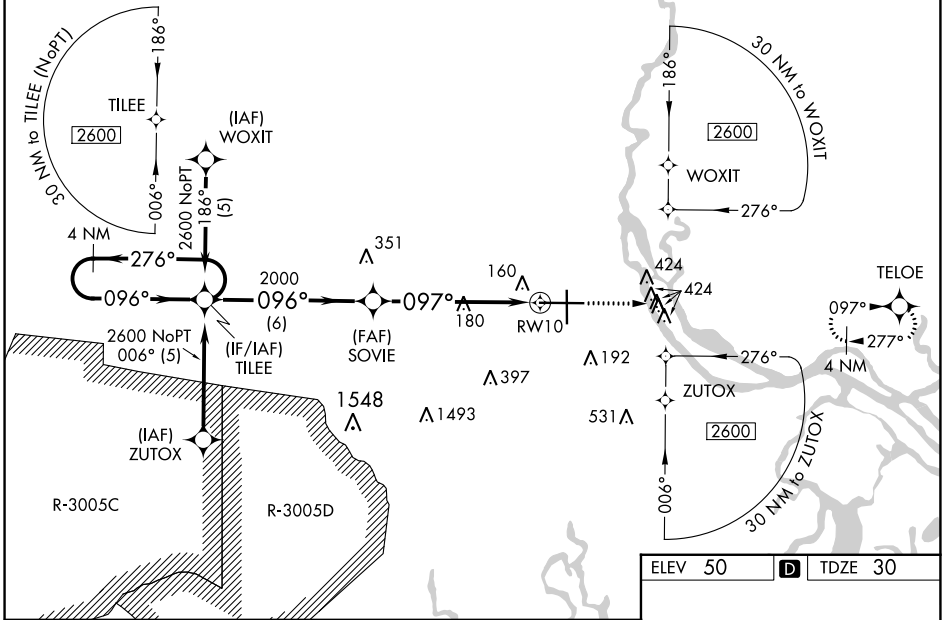
RNP APCH-GPS.

▼ For inop ALS increase LNAV/VNAV all Cats visibility to 1½ SM, increase LNAV Cat C/D to RVR 6000. For uncompensated Baro-VNAV systems, LNAV/VNAV NA below -15°C or above 54°C. When local altimeter setting not received, use Hilton Head Island altimeter setting and increase LPV DA to 296 feet and all visibilities to RVR 2000, increase LNAV/VNAV DA to 596 feet and all visibilities to 1¼ SM, increase all MDAs 80 feet and LNAV Cat C/D visibility to RVR 5000. For inop ALS when using Hilton Head Island altimeter setting, LNAV/VNAV all Cats visibility to 1½ SM, increase LNAV Cat C/D visibility to 1½ SM. VDP and Baro-VNAV NA when using Hilton Head Island altimeter setting.

MALSR

MISSED APPROACH:
Climb to 2500 direct
TELOE and hold.

ATIS 123.75	SAVANNAH APP CON* 125.3 371.875	SAVANNAH TOWER* 125.975 (CTAF) 257.8	GND CON 121.9 348.6	CLNC DEL 119.55 291.775	UNICOM 122.95
-----------------------	---	--	-------------------------------	-----------------------------------	-------------------------



CATEGORY	A	B	C	D
LPV DA	230/18		200 (200-½)	
LNAV/VNAV DA	530/50		500 (500-1)	
LNAV MDA	440/24	410 (400-½)	440/40	410 (400-¾)
CIRCLING	520-1	470 (500-1)	740-2 690 (700-2)	740-2¼ 690 (700-2¼)

SE-4, 22 FEB 2024 to 21 MAR 2024

SE-4, 22 FEB 2024 to 21 MAR 2024

WAAS CH 97314 W19A	APP CRS 186°	Rwy Idg TDZE 47 Apt Elev 50	7002
--	------------------------	---	-------------

RNAV (GPS) RWY 19

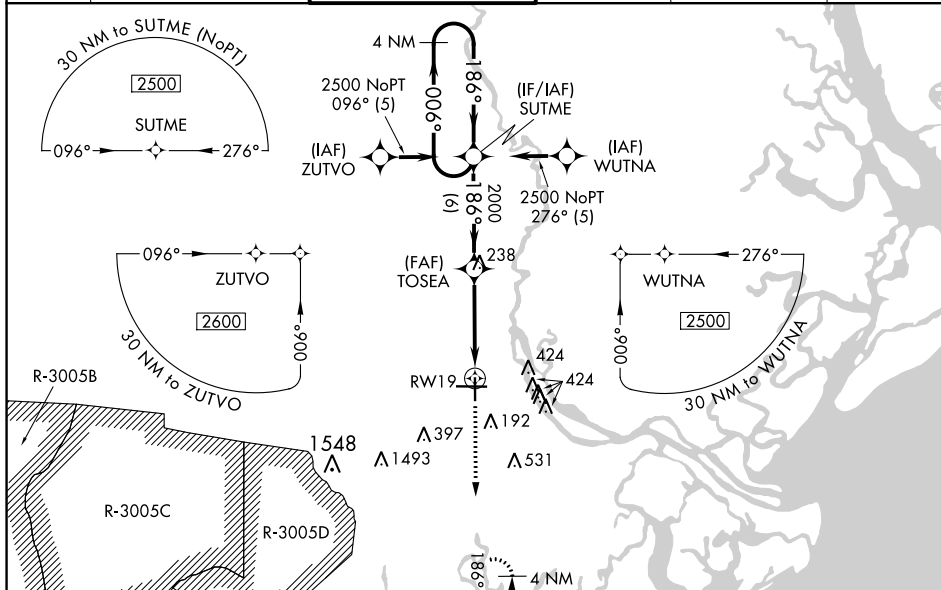
SAVANNAH/HILTON HEAD INTL (SAV)

RNP APCH-GPS.

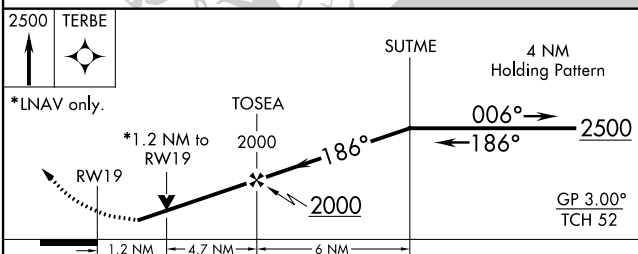
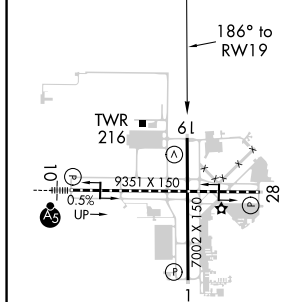
▼ For uncompensated Baro-VNAV systems, LNAV/VNAV NA below -15°C or above 54°C.
▲ When local altimeter setting not received, use Hilton Head Island altimeter setting and increase LPV DA to 378 feet; increase LNAV/VNAV DA to 532 feet and all visibilities ¼ SM; increase all MDAs 80 feet and LNAV visibility Cat C/D ½ SM, and Circling visibility Cat C/D ¼ SM. VDP and Baro-VNAV NA when using Hilton Head Island altimeter setting.

MISSED APPROACH: Climb to 2500 direct TERBE and hold.

ATIS 123.75	SAVANNAH APP CON * 125.3 371.875	SAVANNAH TOWER * 125.975 (CTAF) 257.8	GND CON 121.9 348.6	CLNC DEL 119.55 291.775	UNICOM 122.95
-----------------------	--	---	-------------------------------	-----------------------------------	-------------------------



ELEV 50	D	TDZE 47
----------------	----------	----------------



CATEGORY	A	B	C	D
LPV DA	312-1		265 (300-1)	
LNAV/VNAV DA	466-1½		419 (500-1½)	
LNAV MDA	480-1	433 (500-1)	480-1¼ 433 (500-1¼)	480-1½ 433 (500-1½)
C CIRCLING	520-1	470 (500-1)	740-2 690 (700-2)	740-2¼ 690 (700-2¼)

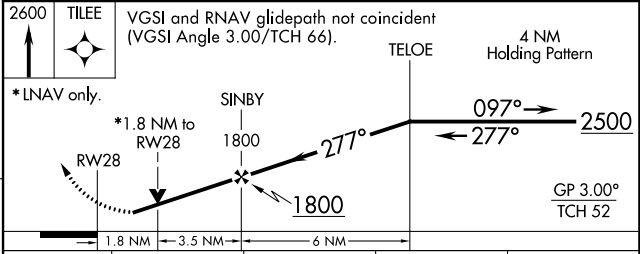
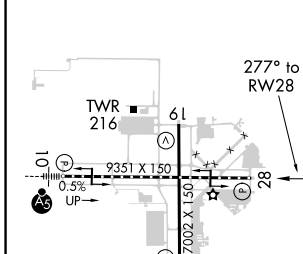
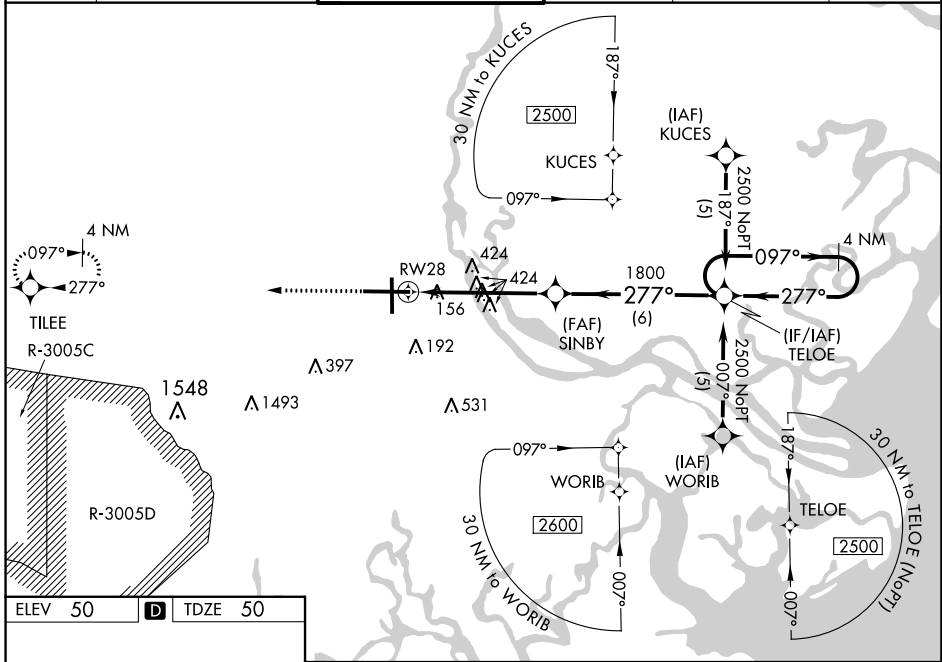
WAAS CH 40015 W28A	APP CRS 277°	Rwy Idg TDZE Apt Elev	9351 50 50
--	------------------------	-----------------------------	---------------------------------------

RNAV (GPS) Z RWY 28

SAVANNAH/HILTON HEAD INTL (SAV)

RNP APCH.		MISSED APPROACH: Climb to 2600 direct TILEE and hold.			
<p>For uncompensated Baro-VNAV systems, LNAV/VNAV NA below -15°C (5°F) or above 49°C (120°F).</p>					

ATIS 123.75	SAVANNAH APP CON* 125.3 371.875	SAVANNAH TOWER* 125.975 (CTAF) 257.8	GND CON 121.9 348.6	CLNC DEL 119.55 291.775	UNICOM 122.95
-----------------------	---	--	-------------------------------	-----------------------------------	-------------------------



CATEGORY	A	B	C	D
LPV DA	307-1		257 (300-1)	
LNAV/VNAV DA	431-1¼		381 (400-1¼)	
LNAV MDA	680-1	630 (700-1)	680-1¾	630 (700-1¾)
C CIRCLING	680-1	630 (700-1)	740-2 690 (700-2)	740-2¼ 690 (700-2¼)

SE-4, 22 FEB 2024 to 21 MAR 2024

SE-4, 22 FEB 2024 to 21 MAR 2024

VORTAC SAV 115.95 Chan 106 (Y)	APP CRS 024°	Rwy Idg TDZE Apt Elev	N/A N/A 50
--	------------------------	-----------------------------	---------------------------------------

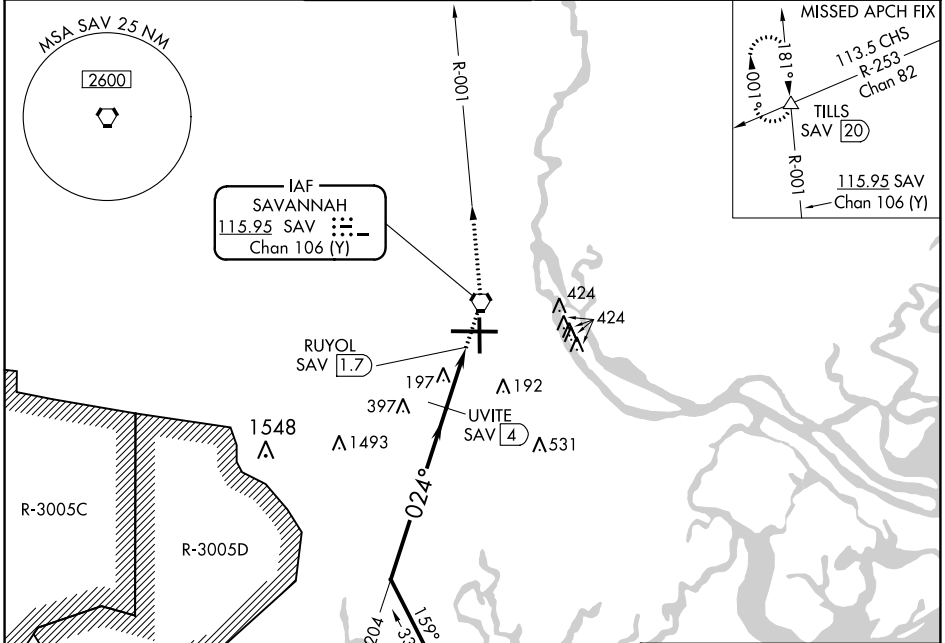
VOR/DME-A

SAVANNAH/HILTON HEAD INTL (SAV)

⚠ When local altimeter setting not received, use Hilton Head Island altimeter setting and increase all MDA 80 feet; increase Circling Cats C/D visibility ¼ SM.

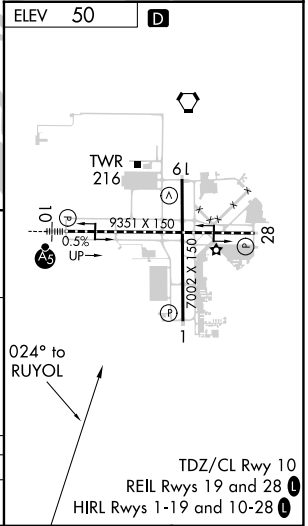
MISSED APPROACH: Climb to 4000 direct SAV VORTAC and SAV R-001 to TILLS INT/SAV 20 DME and hold.

ATIS 123.75	SAVANNAH APP CON* 120.4 353.775	SAVANNAH TOWER* 125.975 (CTAF) 0 257.8	GND CON 121.9 348.6	CLNC DEL 119.55 291.775	UNICOM 122.95
-----------------------	---	---	-------------------------------	-----------------------------------	-------------------------



SE-4, 22 FEB 2024 to 21 MAR 2024

SE-4, 22 FEB 2024 to 21 MAR 2024



CATEGORY	A	B	C	D	E
	520-1	470 (500-1)	740-2 690 (700-2)	740-2¼ 690 (700-2¼)	900-3 850 (900-3)

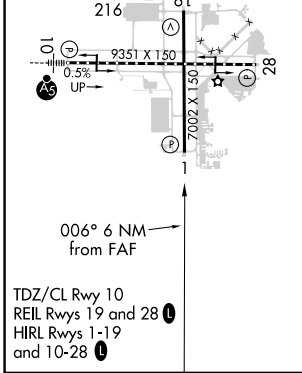
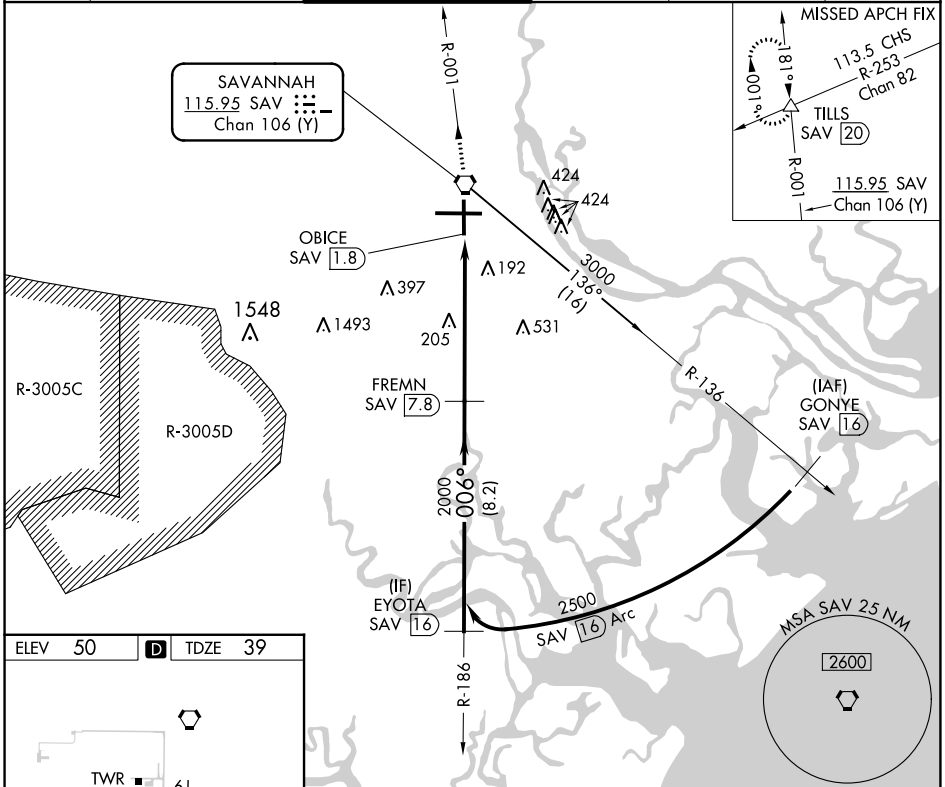
VORTAC SAV 115.95 Chan 106 (Y)	APP CRS 006°	Rwy Idg TDZE Apt Elev	7002 39 50
--	------------------------	-----------------------------	---------------------------------------

VOR/DME or TACAN RWY 1

SAVANNAH/HILTON HEAD INTL (SAV)

MISSED APPROACH: Climb to 4000 direct SAV
VORTAC and via SAV R-001 to TILLS INT/SAV
20 DME and hold.

ATIS 123.75	SAVANNAH APP CON * 120.4 353.775	SAVANNAH TOWER * 125.975 (CTAF) 0 257.8	GND CON 121.9 348.6	CLNC DEL 119.55 291.775	UNICOM 122.95
-----------------------	--	--	-------------------------------	-----------------------------------	-------------------------



4000	SAV	SAV R-001	TILLS		
					EYOTA SAV 16
	SAV VORTAC	OBICE SAV 1.8	SAV 3.1	FREM N SAV 7.8	2500
					Procedure Turn NA
					2000
					2.98° TCH 74
					1.3 NM 4.7 NM 8.2 NM
CATEGORY	A	B	C	D	E
S-1	520/55	481 (500-1)	520-1 4/8 481 (500-1 1/8)	520-1 1/2 481 (500-1 1/2)	520-1 3/4 481 (500-1 3/4)
CIRCLING	520-1	470 (500-1)	740-2 690 (700-2)	740-2 1/4 690 (700-2 1/4)	900-3 850 (900-3)

SE-4, 22 FEB 2024 to 21 MAR 2024

SE-4, 22 FEB 2024 to 21 MAR 2024

VORTAC SAV 115.95 Chan 106 (Y)	APP CRS 181°	Rwy Idg TDZE Apt Elev	7002 47 50
--	------------------------	-----------------------------	---------------------------------------

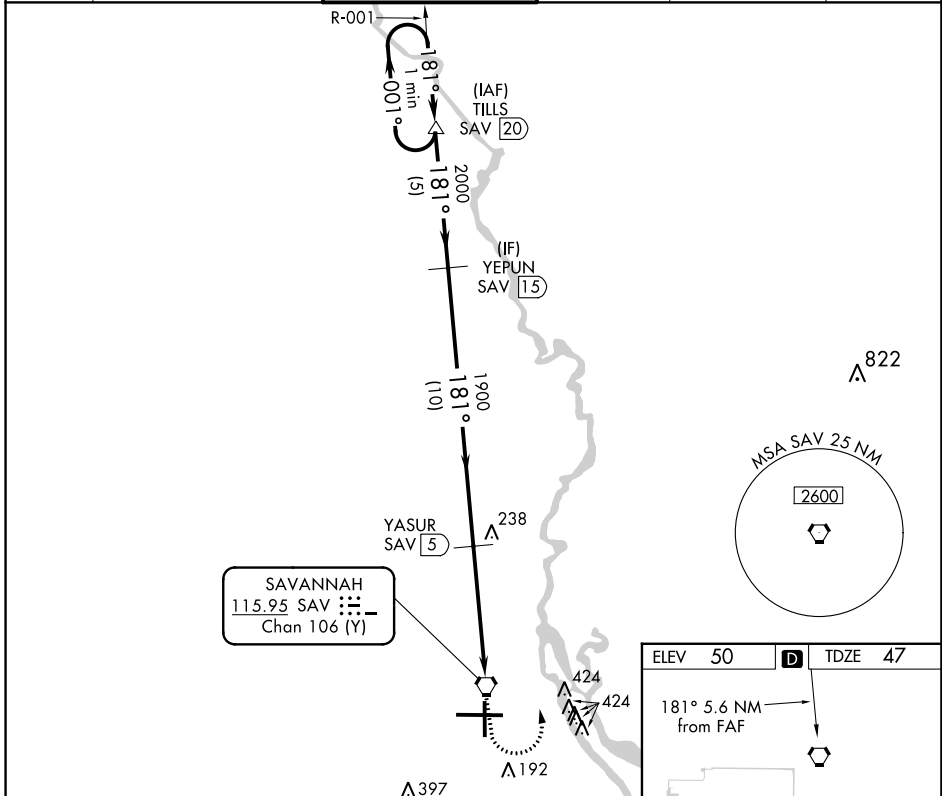
VOR/DME or TACAN RWY 19

SAVANNAH/HILTON HEAD INTL (SAV)

⚠ Visibility reduction by helicopters NA. When local altimeter setting not received, use Hilton Head Island altimeter setting and increase all MDA 80 feet; increase S-19 Cats C/D visibility ¼ SM and Cat E visibility ½ SM; increase Circling Cats C/D visibility ¼ SM. VDP NA when using Hilton Head Island altimeter setting.

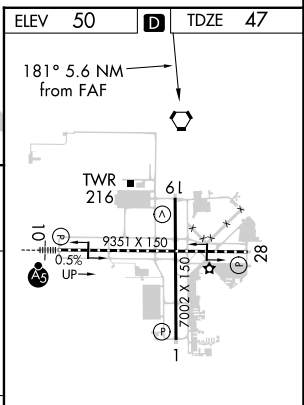
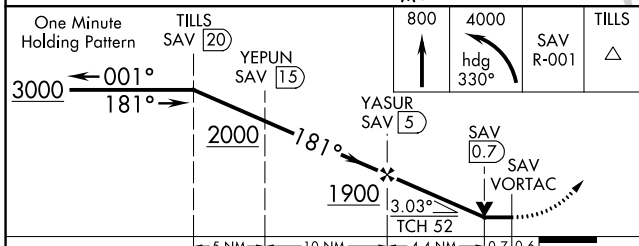
⚠ MISSED APPROACH: Climb to 800 then climbing left turn to 4000 via heading 330° and SAV R-001 to TILLS/20 DME and hold.

ATIS 123.75	SAVANNAH APP CON* 125.3 371.875	SAVANNAH TOWER* 125.975 (CTAF) 0 257.8	GND CON 121.9 348.6	CLNC DEL 119.55 291.775	UNICOM 122.95
-----------------------	---	---	-------------------------------	-----------------------------------	-------------------------



SE-4, 22 FEB 2024 to 21 MAR 2024

SE-4, 22 FEB 2024 to 21 MAR 2024



CATEGORY	A	B	C	D	E
S-19	500-1	453 (500-1)	500-1¼ 453 (500-1¼)	500-1½	453 (500-1½)
CIRCLING	520-1	470 (500-1)	740-2 690 (700-2)	740-2¼ 690 (700-2¼)	900-3 850 (900-3)

TDZ/CL Rwy 10
 REIL Rwy 19 and 28
 HIRL Rwy 1-19 and 10-28