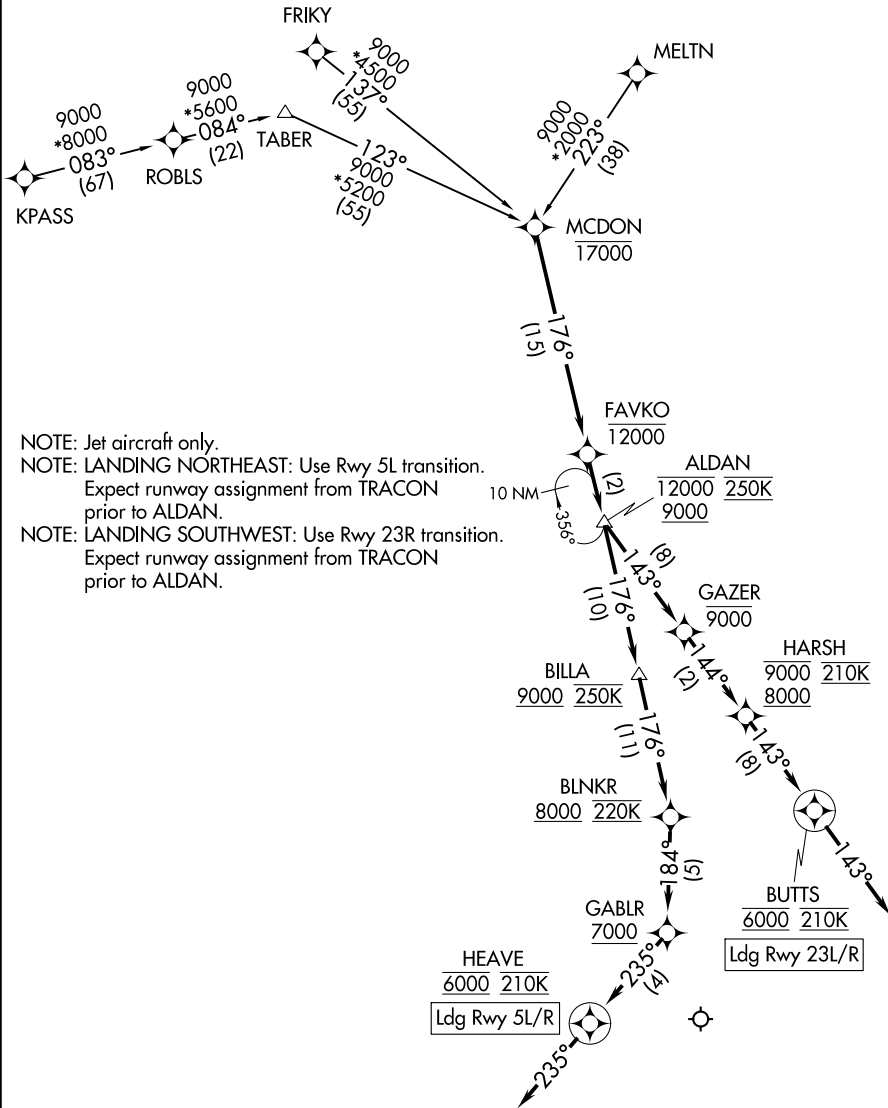


ALDAN FOUR ARRIVAL (RNAV)

RALEIGH APP CON
127.675 307.9
D-ATIS
123.8

RNAV 1 - DME/DME IRU or GPS.
RADAR required.



NOTE: Jet aircraft only.
 NOTE: LANDING NORTHEAST: Use Rwy 5L transition. Expect runway assignment from TRACON prior to ALDAN.
 NOTE: LANDING SOUTHWEST: Use Rwy 23R transition. Expect runway assignment from TRACON prior to ALDAN.

SE-2, 22 FEB 2024 to 21 MAR 2024

SE-2, 22 FEB 2024 to 21 MAR 2024

(CONTINUED ON FOLLOWING PAGE)

NOTE: Chart not to scale.

ALDAN FOUR ARRIVAL (RNAV)

(MCDON.ALDAN4) 25JAN24

ALDAN FOUR ARRIVAL (RNAV)

ARRIVAL ROUTE DESCRIPTION

FRIKY TRANSITION (FRIKY.ALDAN4)
KPASS TRANSITION (KPASS.ALDAN4)
MELTN TRANSITION (MELTN.ALDAN4)

From MCDON on track 176° to cross FAVKO at or below 12000, then on track 176° to cross ALDAN between 9000 and 12000 and at 250K.

LANDING RUNWAYS 5L/R: From ALDAN on track 176° to cross BILLA at or above 9000, then on track 176° to cross BLNKR at or above 8000 and at 220K, then on track 184° to cross GABLR at or above 7000, then on track 235° to cross HEAVE at 6000 and at 210K, then on track 235°. Expect RNP Rwy 5L approach. Non-RNP aircraft: Expect RADAR vectors to final approach course.

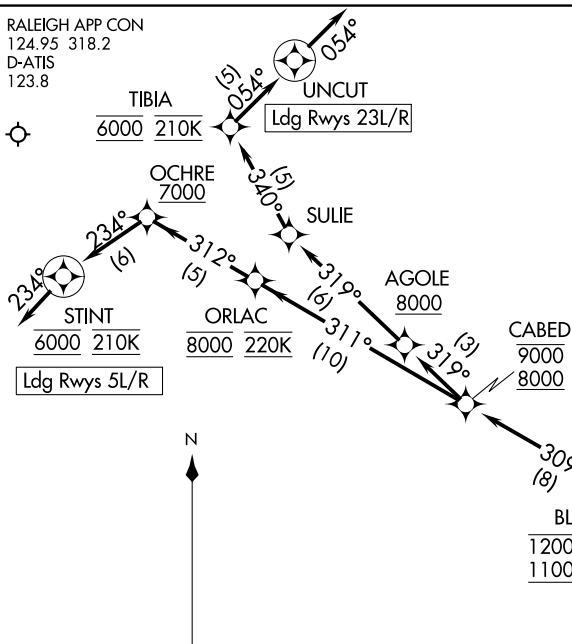
LANDING RUNWAYS 23L/R: From ALDAN on track 143° to cross GAZER at or below 9000, then on track 144° to cross HARSH between 8000 and 9000 and at 210K, then on track 143° to cross BUTTS at 6000 and at 210K, then on track 143°. Expect ILS or RNAV Rwy 23L or Rwy 23R approach.

SE-2, 22 FEB 2024 to 21 MAR 2024

SE-2, 22 FEB 2024 to 21 MAR 2024

BLOGS THREE ARRIVAL (RNAV)
(BLOGS.BLOGS3) 25FEB21

RALEIGH APP CON
124.95 318.2
D-ATIS
123.8



- NOTE: RADAR required.
 NOTE: RNAV 1.
 NOTE: DME/DME/IRU or GPS required.
 NOTE: Turbojet aircraft only.
 NOTE: LANDING NORTHEAST: Use Rwy 5R transition. Expect runway assignment from TRACON prior to CABED.
 NOTE: LANDING SOUTHWEST: Use Rwy 23L transition. Expect runway assignment from TRACON prior to CABED.

ARRIVAL ROUTE DESCRIPTION
 CHKLZ TRANSITION (CHKLZ.BLOGS3)
 FEEBZ TRANSITION (FEEBZ.BLOGS3)
 GARIC TRANSITION (GARIC.BLOGS3)
 TILTZ TRANSITION (TILTZ.BLOGS3)

From BLOGS on track 309° to cross CABED between 8000 and 9000.

LANDING RUNWAYS 5L/R: From over CABED on track 311° to cross ORLAC at 8000 and at 220K, then on track 312° to cross OCHRE at or above 7000, then on track 234° to cross STINT at 6000 and at 210K, then on track 234°. Expect RNP RWY 5R approach. Non RNP aircraft: Expect RADAR vectors to final approach.

LANDING RUNWAYS 23L/R: From CABED on track 319° to cross AGOLE at or above 8000, then on track 319° to SULIE, then on track 340° to cross TIBIA at 6000 and at 210K, then on track 054° to UNCLT, then on track 054°. Expect RADAR vectors to final approach course.

NOTE: Chart not to scale.

RALEIGH-DURHAM, NORTH CAROLINA
RALEIGH-DURHAM INTL (RDU)

(BLOGS.BLOGS3) 21056
BLOGS THREE ARRIVAL (RNAV)

RALEIGH-DURHAM INTL (RDU)
RALEIGH-DURHAM, NORTH CAROLINA

AL-516 (FAA)

RALEIGH APP CON
 124.95 318.2
 D-ATIS
 123.8

TAR RIVER
 117.8 TYI ---
 Chan 125
 N35°58.60' - W77°42.22'
 L-35-36, H-9-12

WENDI
 N35°43.19'
 W78°24.34'
**TURBOJET VERTICAL NAVIGATION
 PLANNING INFORMATION**
 Expect 9000

RALEIGH-DURHAM
 117.2 RDU ---
 Chan 119
 N35°52.35' - W78°47.00'

BRADE
 N35°38.98'
 W78°13.99'
**TURBOJET VERTICAL NAVIGATION
 PLANNING INFORMATION**
 Expect 11000 250K

TILTZ
 N35°27.27'
 W77°45.56'

KINSTON
 117.5 ISO ---
 Chan 122
 N35°22.26' - W77°33.50'
 L-35, H-9-12

WILMINGTON
 117.0 ILM ---
 Chan 117
 N34°21.10' - W77°52.46'
 L-23-35, H-9-12

NOTE: RADAR required.
 NOTE: DME required.

NOTE: Chart not to scale.

ARRIVAL ROUTE DESCRIPTION

KINSTON TRANSITION (ISO.BRADE6): From over ISO VORTAC on ISO R-302 to BRADE, thence . . .

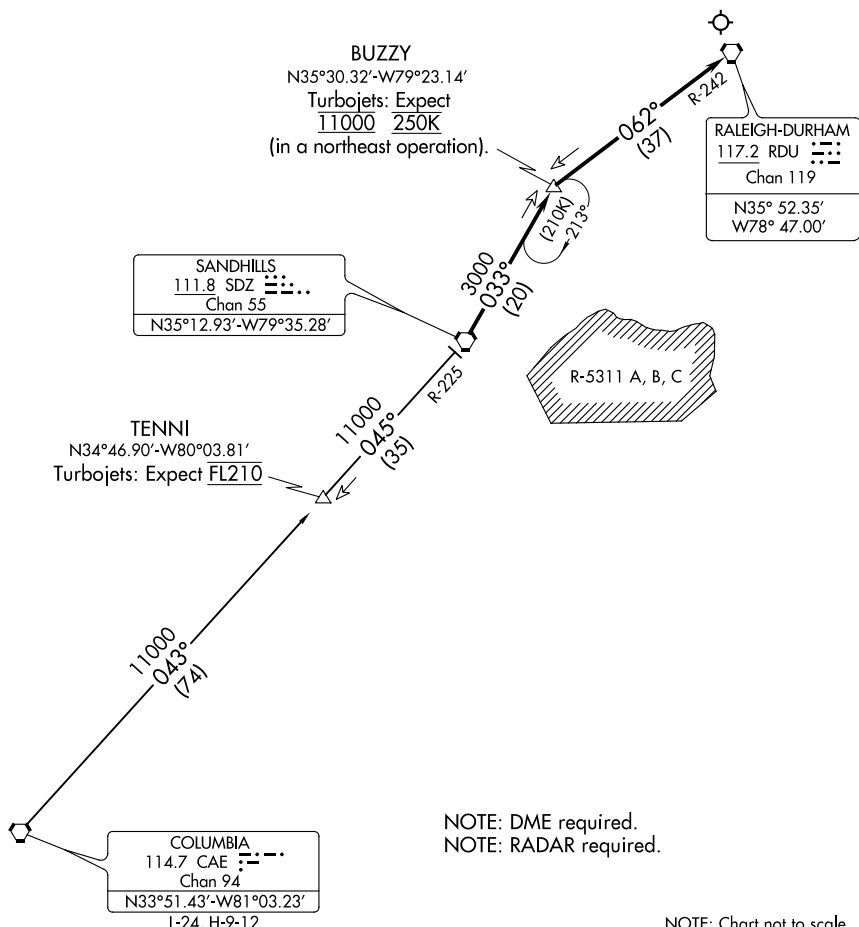
TAR RIVER TRANSITION (TYI.BRADE6): From over TYI VORTAC on TYI R-238 to BRADE, thence . . .

WILMINGTON TRANSITION (ILM.BRADE6): From over ILM VORTAC on ILM R-012 to TILTZ, then on ISO R-302 to BRADE, thence . . .

. . . from over BRADE on RDU R-125 to RDU VORTAC. Expect RADAR vectors to final approach course after WENDI.

BUZZY ONE ARRIVAL

RALEIGH APP CON
127.675 307.9
D-ATIS
123.8



SE-2, 22 FEB 2024 to 21 MAR 2024

SE-2, 22 FEB 2024 to 21 MAR 2024

ARRIVAL ROUTE DESCRIPTION

COLUMBIA TRANSITION (CAE.BUZZY1): From over CAE VORTAC on CAE R-043 and SDZ R-225 to SDZ VORTAC, then on SDZ R-033 to BUZZY.

... Thence on RALEIGH/DURHAM VORTAC R-242 to RDU. Expect RADAR vectors to final approach course after BUZZY.

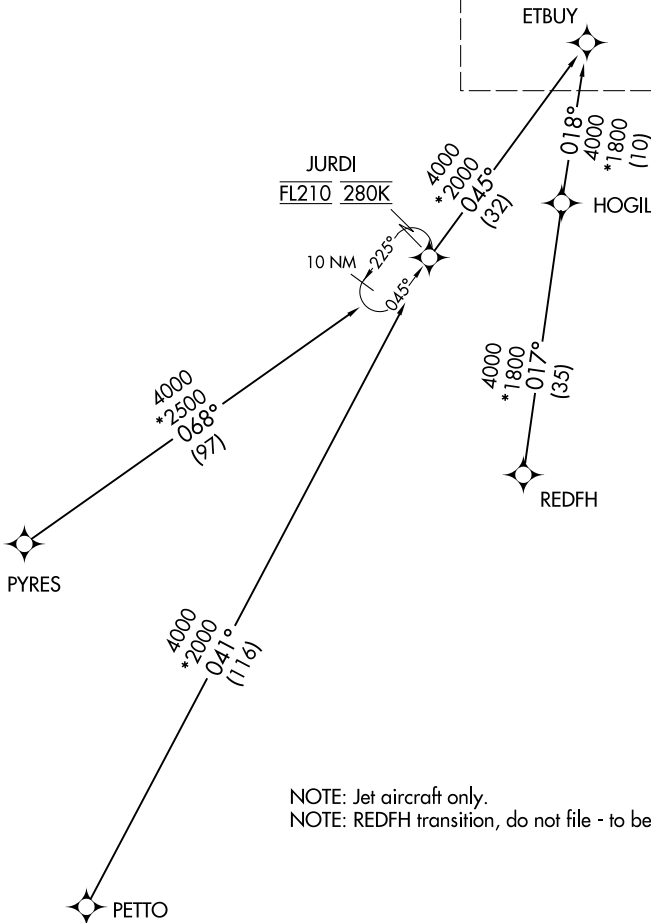
DMSTR ONE ARRIVAL (RNAV) Transition Routes

RALEIGH-DURHAM INTL (RDU)
RALEIGH/DURHAM, NORTH CAROLINA

RALEIGH APP CON
127.675 307.9
D-ATIS
123.8

RNAV 1-DME/DME/IRU or GPS.
RADAR required.

See following page
for Arrival Routes



NOTE: Jet aircraft only.
NOTE: REDFH transition, do not file - to be assigned by ATC.

NOTE: Chart not to scale.

JURDI TRANSITION (JURDI.DMSTR1)
PETTO TRANSITION (PETTO.DMSTR1)
PYRES TRANSITION (PYRES.DMSTR1)
REDFH TRANSITION (REDFH.DMSTR1)

(CONTINUED ON FOLLOWING PAGE)

SE-2, 22 FEB 2024 to 21 MAR 2024

SE-2, 22 FEB 2024 to 21 MAR 2024

(ETBUY.DMSTR1) 22083

AL-516 (FAA)

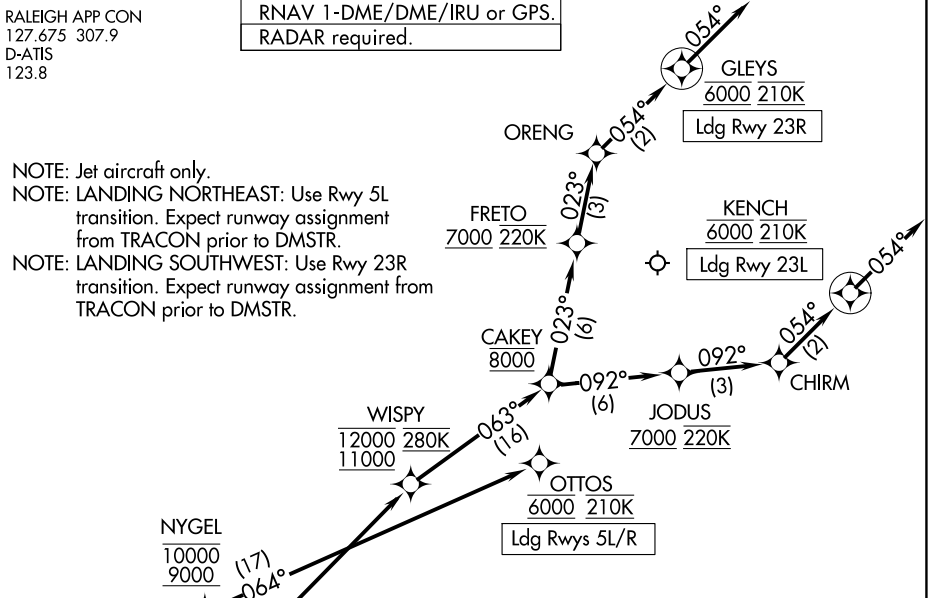
RALEIGH-DURHAM INTL (RDU)
RALEIGH/DURHAM, NORTH CAROLINA

DMSTR ONE ARRIVAL (RNAV) Arrival Routes

RALEIGH APP CON
127.675 307.9
D-ATIS
123.8

RNAV 1-DME/DME/IRU or GPS.
RADAR required.

NOTE: Jet aircraft only.
NOTE: LANDING NORTHEAST: Use Rwy 5L transition. Expect runway assignment from TRACON prior to DMSTR.
NOTE: LANDING SOUTHWEST: Use Rwy 23R transition. Expect runway assignment from TRACON prior to DMSTR.



ARRIVAL ROUTE DESCRIPTION

From ETBUY on track 015° to DMSTR.

LANDING RUNWAYS 5L/R: From DMSTR on track 015° to cross MALNR at or above 11000 and at 250K, then on track 030° to cross NYGEL between 9000 and 10000, then on track 064° to cross OTTOS at 6000 and at 210K. Expect ILS or LOC RWY 5L or RWY 5R approach.

LANDING RUNWAY 23L: From DMSTR on track 048° to cross WISPY between 11000 and 12000 and at 280K, then on track 063° to cross CAKEY at 8000, then on track 092° to cross JODUS at or above 7000 and at 220K, then on track 092° to CHIRM, then on track 054° to cross KENCH at 6000 and at 210K, then on track 054°. Expect RNAV (RNP) Z RWY 23L approach.

Non-RNP aircraft: Expect RADAR vectors to final approach course.

LANDING RUNWAY 23R: From DMSTR on track 048° to cross WISPY between 11000 and 12000 and at 280K, then on track 063° to cross CAKEY at 8000, then on track 023° to cross FRETTO at or above 7000 and at 220K, then on track 023° to ORENG, then on track 054° to cross GLEYS at 6000 and at 210K, then on track 054°.

Expect RNAV (RNP) Z RWY 23R approach.
Non-RNP aircraft: Expect RADAR vectors to final approach course.

NOTE: Chart not to scale.

SE-2, 22 FEB 2024 to 21 MAR 2024

SE-2, 22 FEB 2024 to 21 MAR 2024

DMSTR ONE ARRIVAL (RNAV) Arrival Routes

(ETBUY.DMSTR1) 24MAR22

RALEIGH/DURHAM, NORTH CAROLINA
RALEIGH-DURHAM INTL (RDU)

(TAQLE.TAQLE2) 23278

AL-516 (FAA)

RALEIGH-DURHAM INTL (RDU)
RALEIGH/DURHAM, NORTH CAROLINA

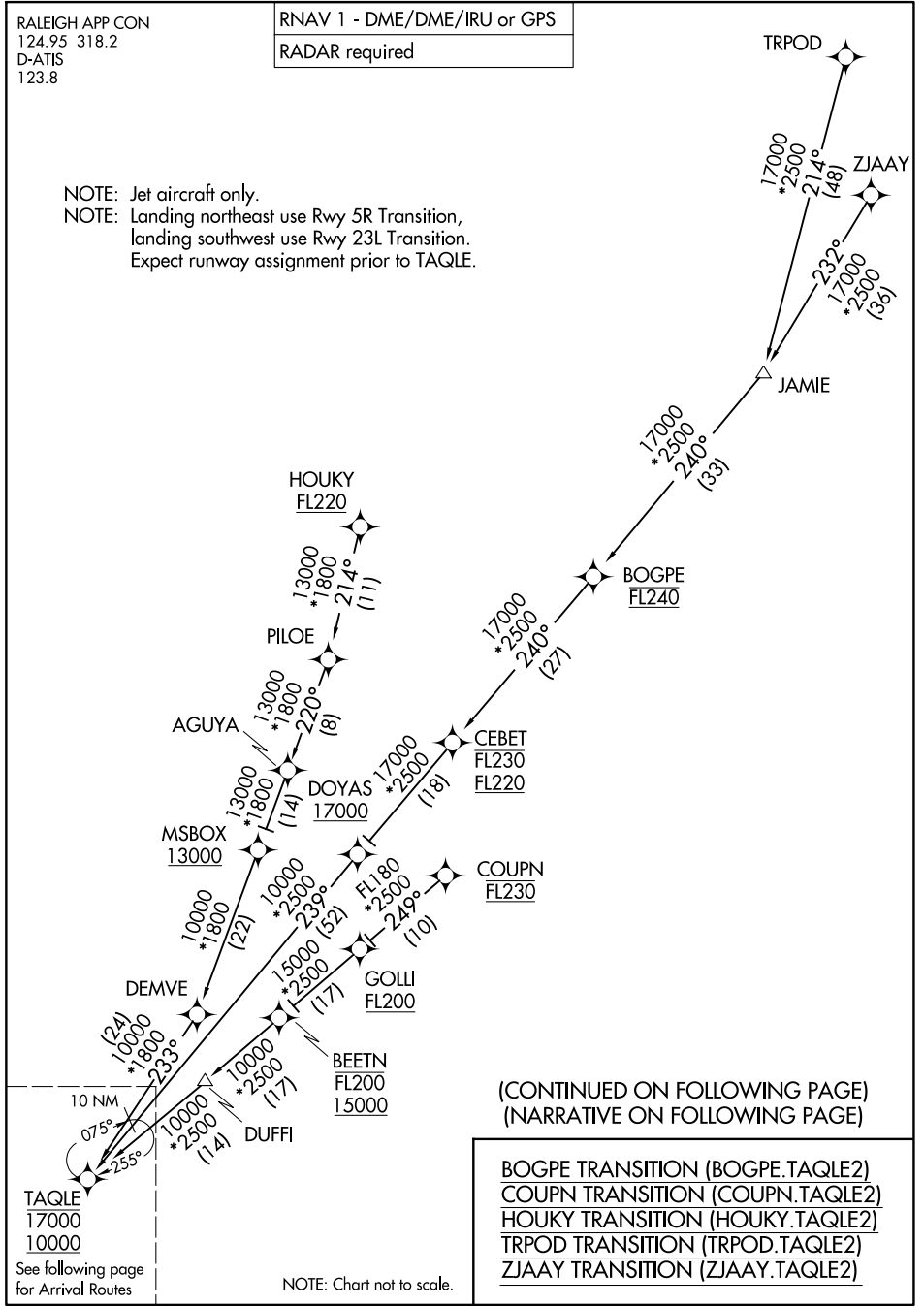
TAQLE TWO ARRIVAL (RNAV) Transition Routes

RALEIGH APP CON
124.95 318.2
D-ATIS
123.8

RNAV 1 - DME/DME/IRU or GPS

RADAR required

NOTE: Jet aircraft only.
NOTE: Landing northeast use Rwy 5R Transition,
landing southwest use Rwy 23L Transition.
Expect runway assignment prior to TAQLE.



(CONTINUED ON FOLLOWING PAGE)
(NARRATIVE ON FOLLOWING PAGE)

- BOGPE TRANSITION (BOGPE.TAQLE2)
- COUPN TRANSITION (COUPN.TAQLE2)
- HOUKY TRANSITION (HOUKY.TAQLE2)
- TRPOD TRANSITION (TRPOD.TAQLE2)
- ZJAAY TRANSITION (ZJAAY.TAQLE2)

See following page
for Arrival Routes

NOTE: Chart not to scale.

SE-2, 22 FEB 2024 to 21 MAR 2024

SE-2, 22 FEB 2024 to 21 MAR 2024

TAQLE TWO ARRIVAL (RNAV) Transition Routes
(TAQLE.TAQLE2) 05OCT23

RALEIGH/DURHAM, NORTH CAROLINA
RALEIGH-DURHAM INTL (RDU)

(TAQLE.TAQLE2) 23278

AL-516 (FAA)

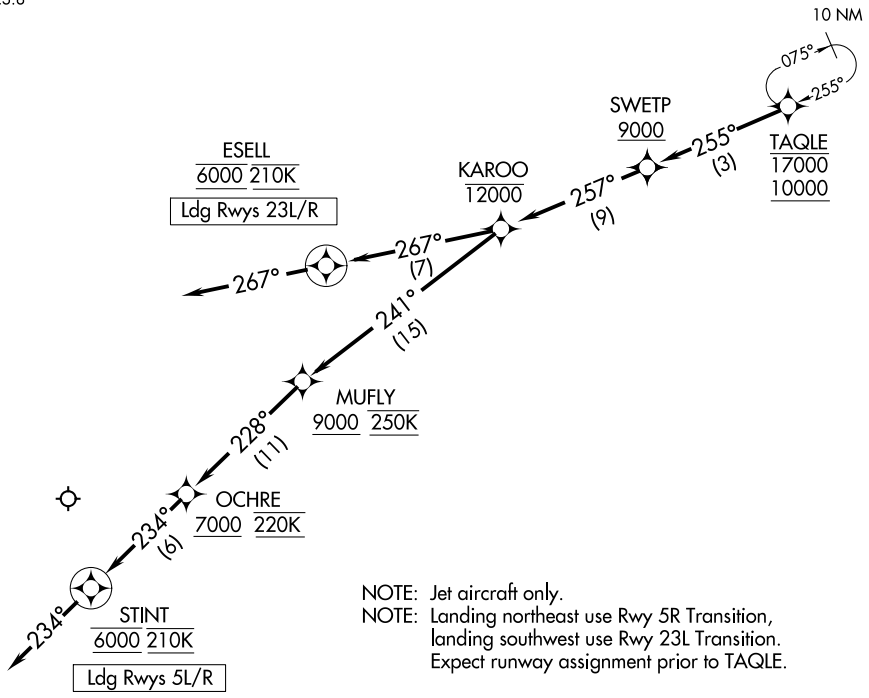
RALEIGH-DURHAM INTL (RDU)
RALEIGH/DURHAM, NORTH CAROLINA

TAQLE TWO ARRIVAL (RNAV) Arrival Routes

RALEIGH APP CON
124.95 318.2
D-ATIS
123.8

RNAV 1 - DME/DME/IRU or GPS

RADAR required



NOTE: Jet aircraft only.
 NOTE: Landing northeast use Rwy 5R Transition, landing southwest use Rwy 23L Transition. Expect runway assignment prior to TAQLE.

NOTE: Chart not to scale.

ARRIVAL ROUTE DESCRIPTION

From TAQLE on track 255° to cross SWETP at or above 9000, then on track 257° to cross KAROO at or below 12000.

LANDING RUNWAYS 5L/R: From KAROO on track 241° to cross MUFLY at or above 9000 and at 250K, then on track 228° to cross OCHRE at or above 7000 and at 220K, then on track 234° to cross STINT at 6000 and at 210K, then on track 234°. Expect RNP RWY 5R approach. Non-RNP aircraft: Expect RADAR vectors to final approach course.

LANDING RUNWAYS 23L/R: From KAROO on track 267° to cross ESELL at 6000 and at 210K, then on track 267°. Expect ILS or RNAV RWY 23L/R approach.

TAQLE TWO ARRIVAL (RNAV) Arrival Routes
(TAQLE.TAQLE2) 05OCT23

RALEIGH/DURHAM, NORTH CAROLINA
RALEIGH-DURHAM INTL (RDU)

SE-2, 22 FEB 2024 to 21 MAR 2024

SE-2, 22 FEB 2024 to 21 MAR 2024