

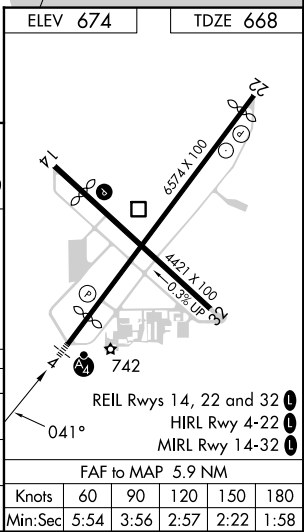
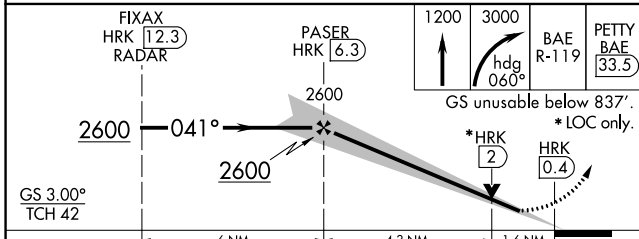
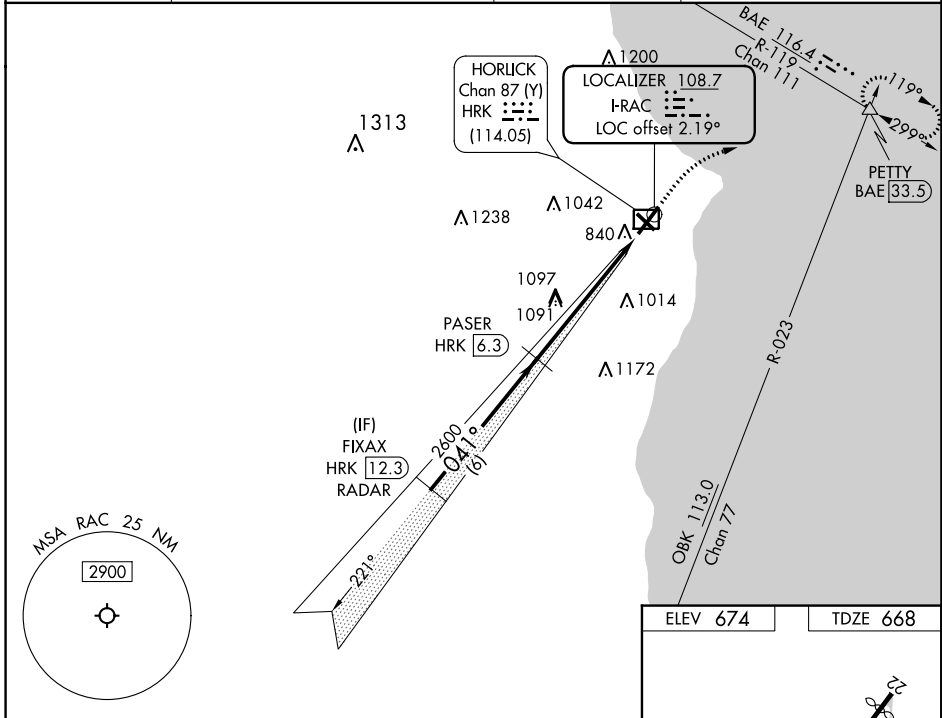
LOC I-RAC <b>108.7</b>	APP CRS <b>041°</b>	Rwy ldg 5840
		TDZE 668
		Apt Elev 674

# ILS or LOC RWY 4

BATTEN INTL (RAC)

RADAR required for procedure entry. DME required.		MALSF	MISSED APPROACH: Climb to 1200 then climbing right turn to 3000 on heading 060° and BAE VOR/DME R-119 to PETTY INT/BAE 33.5 DME and hold, continue climb-in-hold to 3000.
⚠ Circling Rwy 14 NA at night. ⚠ Rwy 4 helicopter visibility reduction below ¾ SM NA. Inop table does not apply to S-ILS 4. DME from HRK DME. Simultaneous reception of I-RAC and HRK DME required.			

ASOS <b>121.425</b>	MILWAUKEE APP CON <b>135.875 317.725</b>	CLNC DEL <b>120.15</b>	UNICOM <b>123.075 (CTAF) 0</b>
------------------------	---	---------------------------	-----------------------------------



CATEGORY	A	B	C	D
S-ILS 4	923-¾ 255 (300-¾)			
S-LOC 4	1220-¾	552 (600-¾)	1220-1¾	552 (600-1¾)
CIRCLING	1220-1	546 (600-1)	1380-2	1380-2¼
			706 (800-2)	706 (800-2¼)

EC-3, 22 FEB 2024 to 21 MAR 2024

EC-3, 22 FEB 2024 to 21 MAR 2024

Knots	60	90	120	150	180
Min:Sec	5:54	3:56	2:57	2:22	1:58

WAAS CH <b>53516</b> <b>W22A</b>	APP CRS <b>219°</b>	Rwy Idg <b>6184</b> TDZE <b>666</b> Apt Elev <b>674</b>
--	------------------------	---

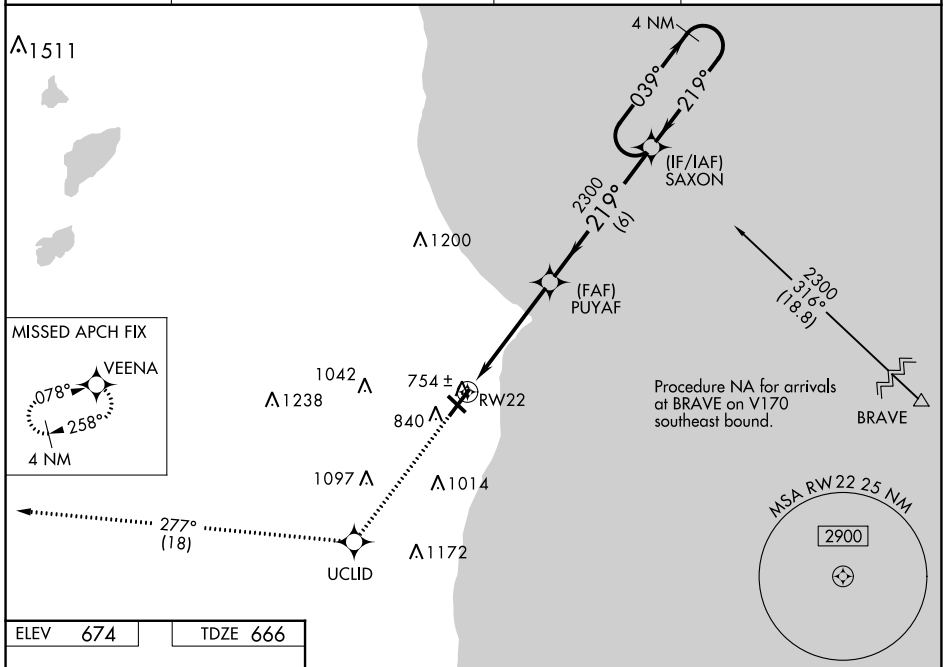
# RNAV (GPS) RWY 22

BATTEN INTL (RAC)

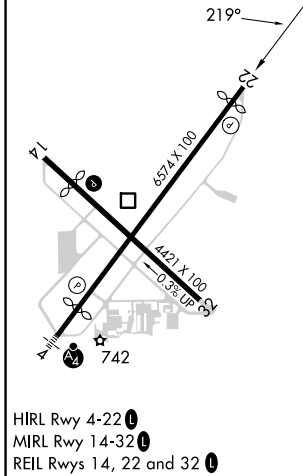
**⚠** For uncompensated Baro-VNAV systems, LNAV/VNAV NA below -19°C (-2°F) or above 54°C (130°F).  
**⚠** DME/DME RNP-0.3 NA. When local altimeter setting not received, use General Mitchell Intl altimeter setting: increase LPV DA to 984 and all visibilities ½ SM; increase LNAV/VNAV DA to 1032 and all visibilities ¼ SM; increase all MDA 40 feet and LNAV Cat C and D visibility ½ SM and Circling Cat C and D visibility ¼ SM. Circling Rwy 14 NA at night. Rwy 22 helicopter visibility reduction below ¼ SM NA. Baro-VNAV and VDP NA when using General Mitchell Intl altimeter setting.

**MISSED APPROACH:**  
 Climb to 3000 direct UCLID and track 277° to VEENA and hold.

ASOS <b>121.425</b>	MILWAUKEE APP CON <b>135.875 317.725</b>	CLNC DEL <b>120.15</b>	UNICOM <b>123.075 (CTAF) 0</b>
------------------------	---	---------------------------	-----------------------------------



ELEV 674	TDZE 666
----------	----------



CATEGORY	A	B	C	D
LPV DA		949-7/8	283 (300-7/8)	
LNAV/VNAV DA		997-1	331 (400-1)	
LNAV MDA		1020-1	354 (400-1)	
<b>C</b> CIRCLING	1140-1 466 (500-1)	1160-1 486 (500-1)	1380-2 706 (800-2)	1380-2 1/4 706 (800-2 1/4)

EC-3, 22 FEB 2024 to 21 MAR 2024

EC-3, 22 FEB 2024 to 21 MAR 2024

APP CRS	Rwy Idg	<b>4421</b>
<b>315°</b>	TDZE	<b>667</b>
	Apt Elev	<b>674</b>

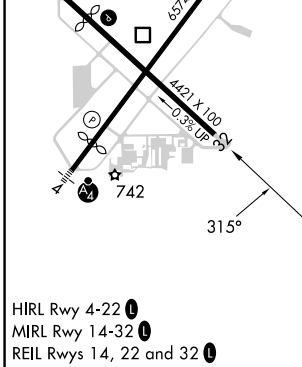
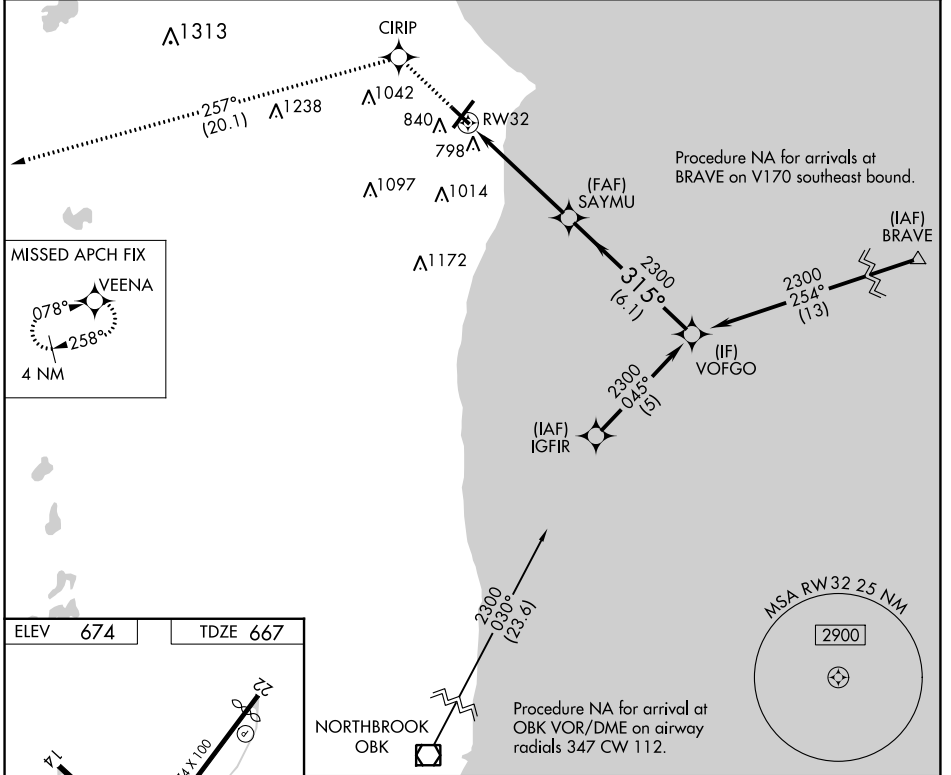
# RNAV (GPS) RWY 32

BATTEN INTL (RAC)

**▼** DME/DME RNP-0.3 NA. VDP NA when using General Mitchell Intl altimeter setting.  
**▲** When local altimeter setting not received, use General Mitchell Intl altimeter setting:  
 Increase all MDA 40 feet and visibility Cat C and D ¼ SM. Rwy 32 helicopter  
 visibility reduction below ¾ SM NA. Circling Rwy 14 NA at night.

**MISSED APPROACH:**  
 Climb to 3000 direct  
 CIRIP and track 257°  
 to VEENA and hold.

ASOS <b>121.425</b>	MILWAUKEE APP CON <b>135.875 317.725</b>	CLNC DEL <b>120.15</b>	UNICOM <b>123.075 (CTAF) 0</b>
------------------------	---	---------------------------	-----------------------------------



3000	CIRIP	VEENA	SAYMU		VOFGO	
↑	✧	tr 257° ✧	✖		✖	
			1.1 NM to RW32		315°	
			RW32		2300	
			1.1 NM		3.9 NM	
			≤ 3.04° TCH 40		6.1 NM	
CATEGORY	A		B		C	
LNAV MDA	1060-1		393 (400-1)		1060-1½ 393 (400-1½)	
<input checked="" type="checkbox"/> CIRCLING	1140-1 466 (500-1)		1160-1 486 (500-1)		1380-2 706 (800-2)	
					1380-2¼ 706 (800-2¼)	

EC-3, 22 FEB 2024 to 21 MAR 2024

EC-3, 22 FEB 2024 to 21 MAR 2024

WAAS CH <b>97516</b> <b>W04A</b>	APP CRS <b>039°</b>	Rwy Idg TDZE Apt Elev	<b>5840</b> <b>668</b> <b>674</b>
--	------------------------	-----------------------------	---

# RNAV (GPS) RWY 4

BATTEN INTL (RAC)

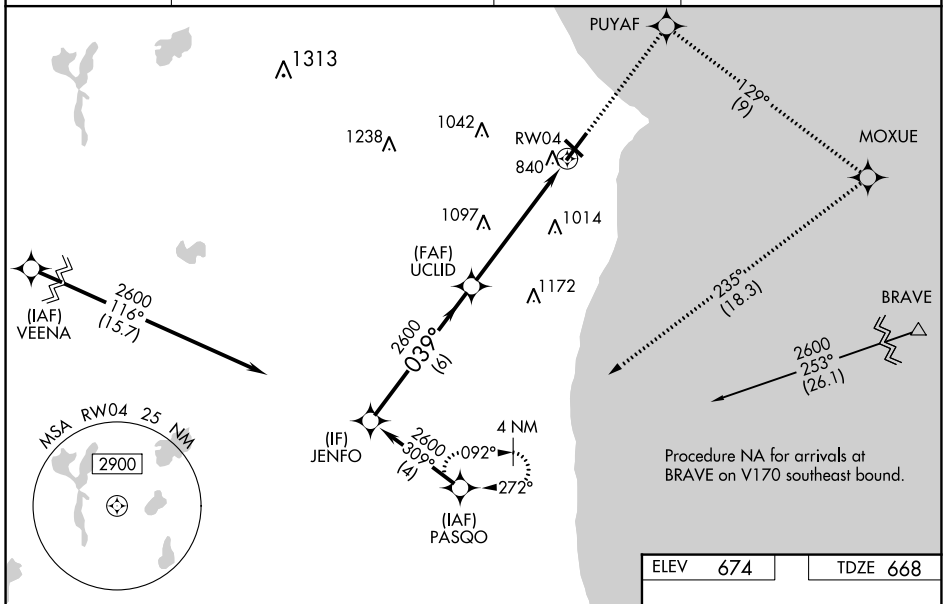
**⚠** Baro-VNAV NA when using General Mitchell Intl altimeter setting. For uncompensated Baro-VNAV systems, LNAV/VNAV NA below -20°C (-4°F) or above 54°C (130°F). DME/DME RNP-0.3 NA. VDP NA when using General Mitchell Intl altimeter setting. When local altimeter setting not received, use General Mitchell Intl altimeter setting; increase LPV DA to 1023 and all visibilities 1/8 SM; increase LNAV/VNAV DA to 1135 and all visibilities 1/8 SM; increase all MDA 40 feet and visibility Cat C and D 1/4 SM. Circling Rwy 14 NA at night. Rwy 4 helicopter visibility reduction below 3/4 SM NA. Inop table does not apply.

MALSF



**MISSED APPROACH:**  
Climb to 2600 direct PUYAF and right turn on track 129° to MOXUE and right turn on track 235° to PASQO and hold.

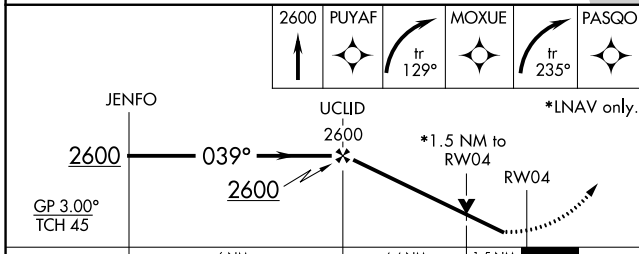
ASOS <b>121.425</b>	MILWAUKEE APP CON <b>135.875 317.725</b>	CLNC DEL <b>120.15</b>	UNICOM <b>123.075 (CTAF)</b>
------------------------	---	---------------------------	---------------------------------



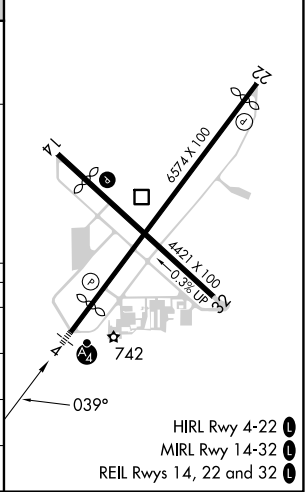
EC-3, 22 FEB 2024 to 21 MAR 2024

EC-3, 22 FEB 2024 to 21 MAR 2024

ELEV 674	TDZE 668
----------	----------



CATEGORY	A	B	C	D
LPV DA	988-1		320 (400-1)	
LNAV/VNAV DA	1100-1½		432 (500-1½)	
LNAV MDA	1180-1	512 (600-1)	1180-1¾	512 (600-1¾)
<b>C</b> CIRCLING	1180-1	506 (600-1)	1380-2 706 (800-2)	1380-2¼ 706 (800-2¼)



- HIRL Rwy 4-22
- MIRL Rwy 14-32
- REIL Rws 14, 22 and 32