

DRONE TWO ARRIVAL
(DRONE: DRONE2) 24MAY18

(DRONE: DRONE2) 23334
DRONE TWO ARRIVAL

AL-291 (FAA)

NORFOLK, VIRGINIA

ORF ATIS
127.15
NORFOLK APP CON
118.9 353.7



DRONE TURBOJET VERTICAL NAVIGATION PLANNING INFORMATION
Expect clearance to cross at 11000.

DEENE TURBOJET VERTICAL NAVIGATION PLANNING INFORMATION
Expect clearance to cross at FL210.

BROZE TURBOJET VERTICAL NAVIGATION PLANNING INFORMATION
Expect clearance to cross at FL190.

RALEIGH/DURHAM
117.2 RDU
Chan 119

TAR RIVER
117.8 TYI
Chan 125

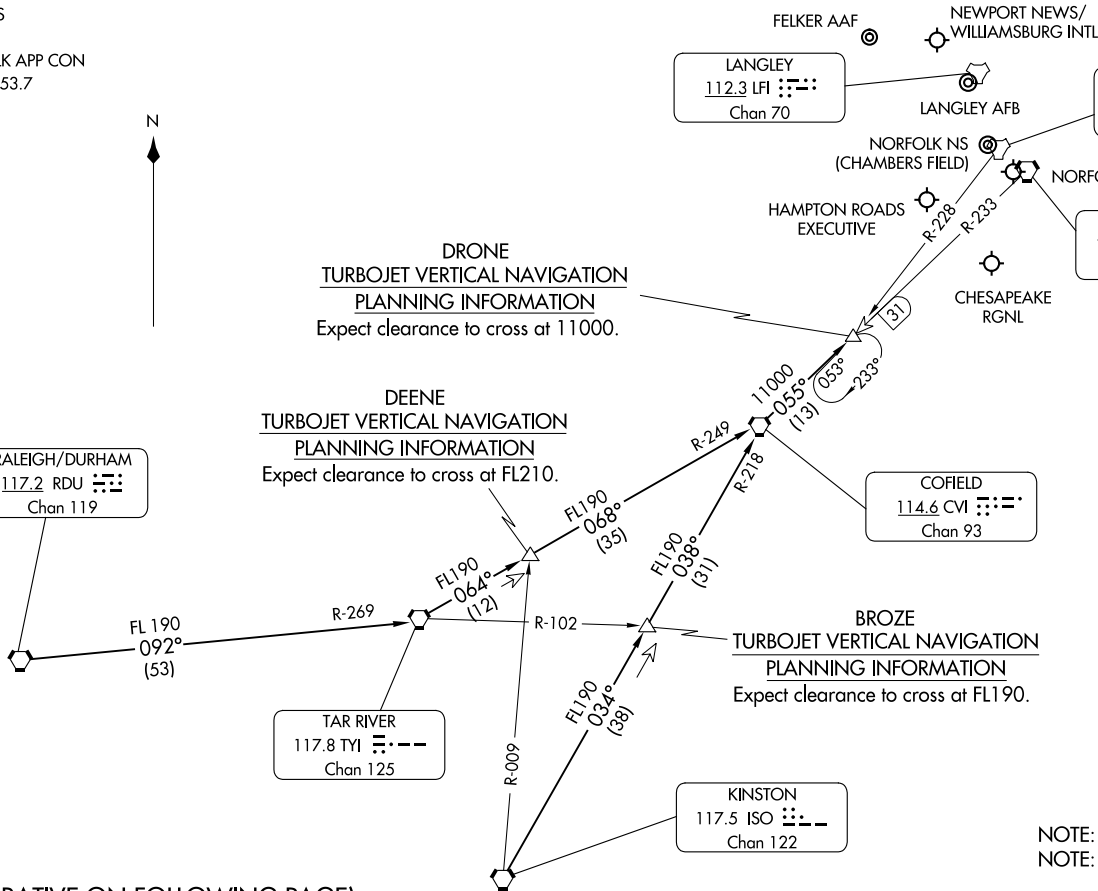
KINSTON
117.5 ISO
Chan 122

COFIELD
114.6 CVI
Chan 93

LANGLEY
112.3 LFI
Chan 70

CHAMBERS
113.95 NGU
Chan 86(Y)

NORFOLK
116.9 ORF
Chan 116



NOTE: RADAR required.
NOTE: DME required.

NOTE: Chart not to scale.

(NARRATIVE ON FOLLOWING PAGE)

NORFOLK, VIRGINIA

ARRIVAL DESCRIPTION

KINSTON TRANSITION (ISO.DRONE2): From over ISO VORTAC on ISO R-034 and CVI R-218 to CVI VORTAC, then on CVI R-055 to DRONE. Thence. . . .

RALEIGH/DURHAM TRANSITION (RDU.DRONE2): From over RDU VORTAC on RDU R-092 and TYI R-269 to TYI VORTAC, then on TYI R-064 and CVI R-249 to CVI VORTAC, then on CVI R-055 to DRONE. Thence. . . .

...from over DRONE expect radar vectors to final approach course.

NE-3, 22 FEB 2024 to 21 MAR 2024

NE-3, 22 FEB 2024 to 21 MAR 2024


TERKS TWO ARRIVAL

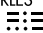
NORFOLK APP CON
 118.9 353.7
 KNGU ATIS
 118.425 342.0
 KNTU ATIS *
 317.6
 ORF ATIS
 127.15

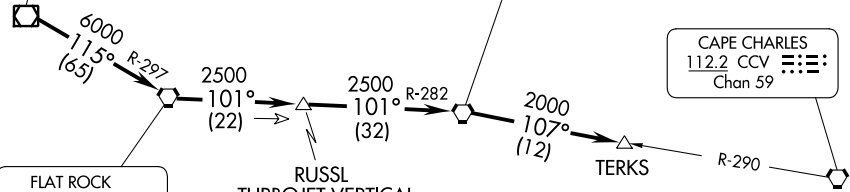
TURBOJET VERTICAL
 NAVIGATION PLANNING
 INFORMATION

Expect clearance to cross
 at 14,000'.

MONTEBELLO
 115.3 MOL 
 Chan 100

HARCUM
 108.8 HCM 
 Chan 25

CAPE CHARLES
 112.2 CCV 
 Chan 59

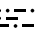


TURBOJET VERTICAL
 NAVIGATION PLANNING
 INFORMATION

Expect clearance to cross
 at 16,000'.

TURBOJET VERTICAL
 NAVIGATION PLANNING
 INFORMATION

Expect clearance to cross
 20 NM west at FL 210.

FLAT ROCK
 113.3 FAK 
 Chan 80

NORFOLK NS
 (CHAMBERS FLD)

NORFOLK
 INTL

HAMPTON
 ROADS
 EXEC

OCEANA NAS/
 APOLLO SOUCEK
 FLD

NOTE: For aircraft at or
 above 14,000' only.

SUFFOLK
 EXEC

CHESAPEAKE
 RGNL

NOTE: Chart not to scale.

ARRIVAL ROUTE DESCRIPTION

From over MOL VOR/DME via R-115 and FAK R-297 to FAK VORTAC, then via FAK R-101 and HCM R-282 to HCM VORTAC, then via HCM R-107 and CCV R-290 to TERKS INT. Expect radar vectors to the final approach course after the TERKS INT.

TERKS TWO ARRIVAL

NE-3, 22 FEB 2024 to 21 MAR 2024

NE-3, 22 FEB 2024 to 21 MAR 2024