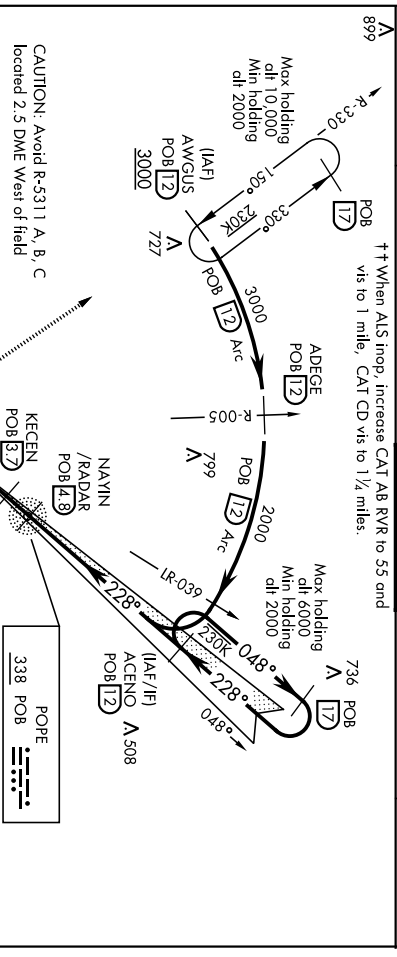


ILS or LOC Z RWY 23

LOC I-POB 110.9	APCH CRS 228°	Rwy Idg 7501	AL-147 [USAF]	POE AAF (KPOB)
	TDZE 200	Aspl Elev 218		
<p>▼ When ALS inop, increase RVR to 40 and vis to ¼ mile. ** When ALS inop, increase CAT AB RVR to 55 and vis to 1 mile, CAT CD RVR to 60, vis to 1½ miles. *** Circling not authorized SE of Rwy 5-23.</p>			ALS-I-1 	MISSED APPROACH: Climbing right turn to 2000 direct AWGUS and Hold.

ATIS 132.3 353.725	FAVETTEVILLE APP CON 125.175 285.575 (271° - 090°) 133.0 290.25 (091° - 270°)	POE TOWER 135.025 291.1	GND CON 124.55 275.8	CLNC DEL 275.8
------------------------------	---	-----------------------------------	--------------------------------	--------------------------



RADAR REQUIRED

EMERG SAFE ALT 100 NM 5300 FROM "POB" TACAN

2000	AWGUS POB 12	T LOC only	NDB NAYIN /RADAR 48	ACENO 12 048°
	TACAN 12			GS 3.00° TCH 54
CATEGORY	A	B	C	D
SLIS 23**	400/24 200 (200-½)			
S-LOC 23**	620/24 420 (500-½) 200 (200-½)			
☑ CIRCLING	760-1 542 (600-1) 920-2 1060-2 ¾ 702 (800-2) 842 (900-2 ¾)			
WITHOUT LAST STEPDOWN FIX				
S-LOC 23††	640/24 440 (500-½)		640/45 440 (500-¾)	

ELEV	218	TDZE	200
Rwy 5 Idg	7501'		
Rwy 23 Idg	7501'		
			228° 3.9 NM from FAF

NDB POB	APCH CRS	Rwy Idg	7501
338	228°	TDZE	200
	Arpt Elev	218	

AL-147 [USAF]

POE AAF (KPOB)

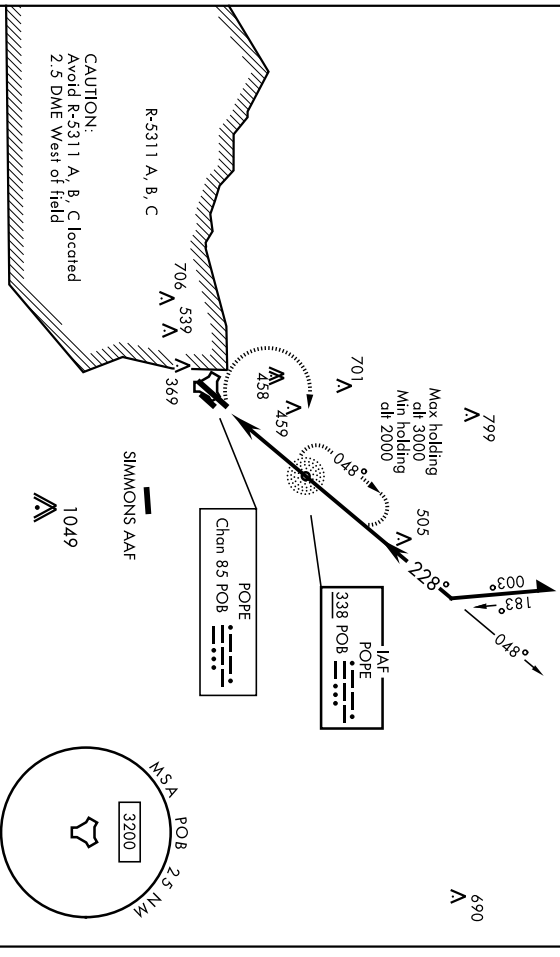
- When AIS inop, increase CAT AB RVR to 55 and vis to 1 mile,
- CAT CD vis to 1 1/8 miles.
- ** Circling not authorized SE of Rwy 5-23.



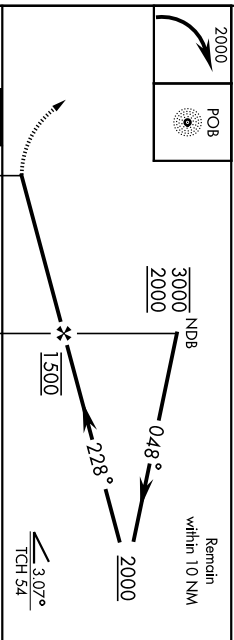
MISSED APPROACH: Climbing right turn to 2000 direct POB NDB and hold, continue climb-in-hold to 2000.

ATIS	FAYETTEVILLE APP CON	POE TOWER	GND CON	CINCLC DEL
132.3 353.725	125.175 285.575 (271° - 090°)	135.025 291.1	124.55 275.8	275.8
	133.0 290.25 (091° - 270°)			

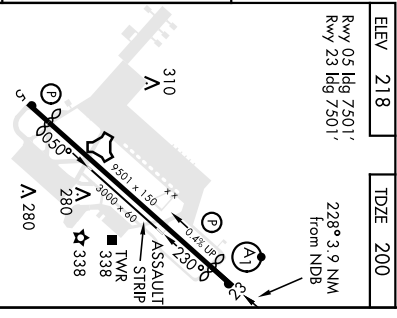
736 A



RADAR REQUIRED
EMERG SAFE ALT 100 NM 5300
FROM "POB" TACAN



CATEGORY	A		B		C		D	
	760/40	560 (600-¾)	760/60	560 (600-1½)	920-2	1060-2¾	702 (800-2)	842 (900-2¾)
S-23 *								
**CIRCLINGS	760-1	542 (600-1)						



ELEV	218	TDZE	200
Rwy 05 Idg	7501'		
Rwy 23 Idg	7501'		
		228° 3.9 NM	from NDB

REIL Rwy 5							
HIRL Rwy 5-23							
URL Rwy 050° 230°							
FAF to MAP 3.2 NM							

Knots	FAF to MAP 3.2 NM		POE AAF (KPOB)		NDB Rwy 23	
	60	90	120	150	180	180
Mins:Sec	3:12	2:08	1:36	1:17	1:04	1:04

RNAV (GPS) RWY 23

WAA5	APCH CRS	Rwy Idg	7501
Chon 52202	TDZE	200	
W23A	228°	Appt Elev	218

AL-147 [USAF]

POPE AAF (KPOB)

- When AIS inop, increase CAT ABCD RVR to 40 vis to 3/4 mile.
- When AIS inop, increase CAT ABCD vis to 1/4 mile.
- When AIS inop, increase CAT Ab RVR to 53 and vis to 1 mile, CAT CD vis to 1 3/8 miles.



MISSED APPROACH: Climbing right turn to 2000 direct AWGUS and hold.

FAVETEVILLE APP CON	POPE TOWER	135.025	291.1
ATIS	125.175	285.575	(271° - 090°)
132.3	353.725	133.0	290.25 (091° - 270°)

GND CON	124.55	275.8
CINC DEL	275.8	



DME/DME RNP-0.3 NA

Max holding
dlt 9000
Min holding
dlt 2000



For uncompensated Baro-VNAV systems, procedure NA below -1.5°C (5°F) or above 53°C (128°F).
Circling Visibility Reduction by Helicopters NA.



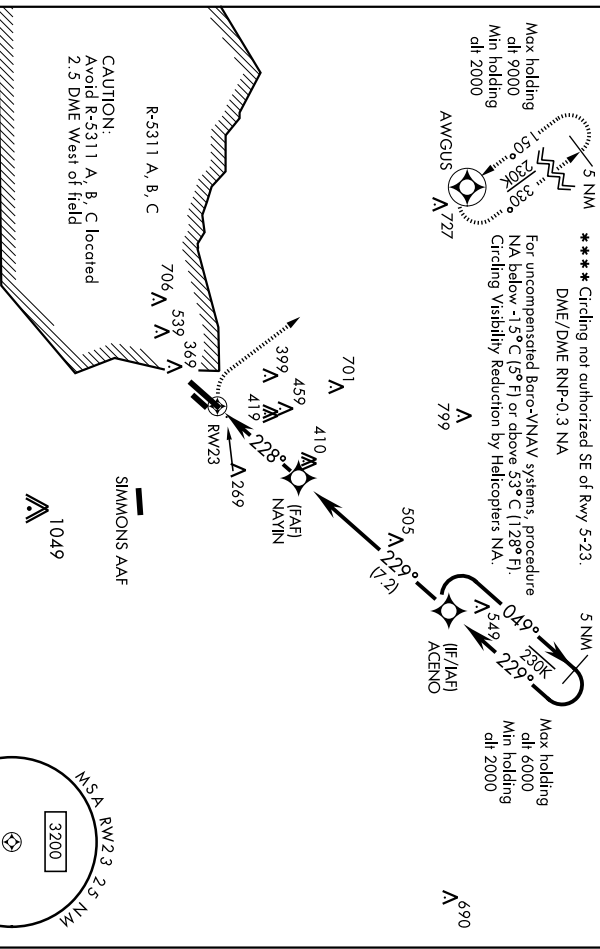
AWGUS V 927

A 799



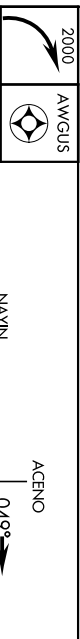
A 690 (IF/IAF ACENO)

Max holding
dlt 6000
Min holding
dlt 2000



RADAR REQUIRED

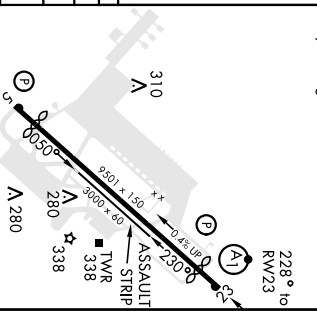
EMERG SAFE ALT 100 NM 5300



ELEV	218	TDZE	200
------	-----	------	-----

Rwy 05 Idg 7501',
Rwy 23 Idg 7501'

228° to RWY 23



CATEGORY	A	B	C	D
LPV *	400/24	200	200-1/2	
VNAV DA	572/40	372	400-3/4	
*** **	680/24	480	500-1/2	
*** **	920-2	1060-2 3/4	1060-2 3/4	
**** *	760-1	542 (600-1)	702 (800-2)	842 (900-2 3/4)

REIL Rwy 5
HIRL Rwy 5-23
URL Rwy 050° - 230°

POPE AAF (KPOB)
RNAV (GPS) RWY 23
FORT BRAGG, NORTH CAROLINA
35°10'N-79°01'W
Andr 7 24MAY18

TACAN RWY 23

TACAN POB Chan 85	APCH CRS 232°	Rwy Idg TDZE Arpt Elev	7501 200 218
----------------------	-------------------------	------------------------------	---

AL-147 [USAF]

POFE AAF (KPOB)

- * When ALS Inop, increase CAT AB RVR to 55 and vis to 1 mile, CAT CD vis to 1 1/2 miles.
- ** Circling not authorized SE of Rwy 5-23.

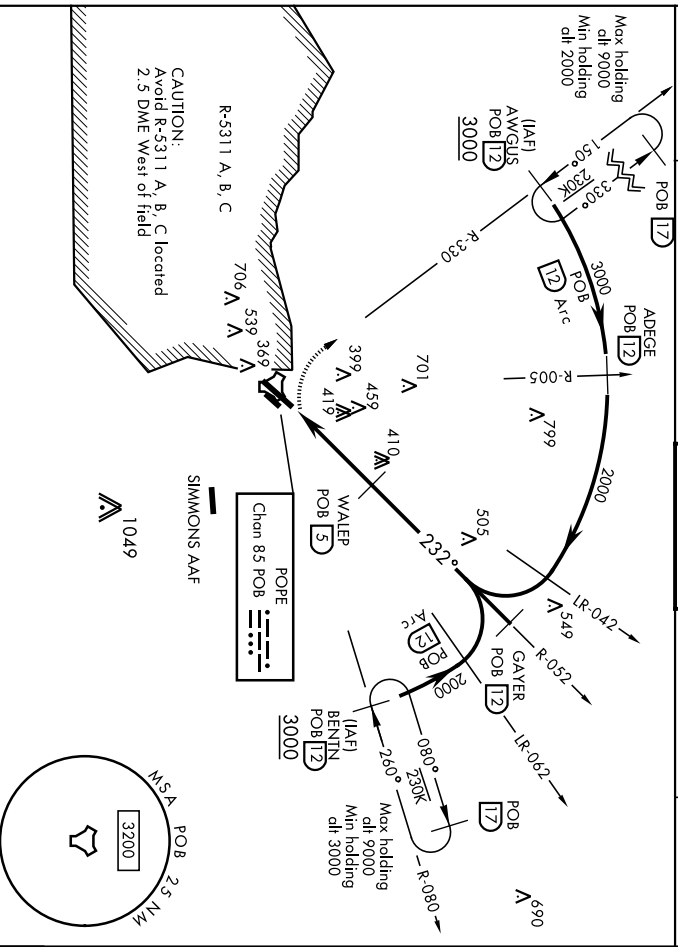
MISSED APPROACH: Climbing right turn to 2000 direct AWGUS and hold.

ATIS 132.3 353.725	FAYETTEVILLE APP CON 125.175 285.575 (271° - 090°) 133.0 290.25 (091° - 270°)
------------------------------	---

POFE TOWER 135.025 291.1

GND CON 124.55 275.8

CINCL DEL 275.8

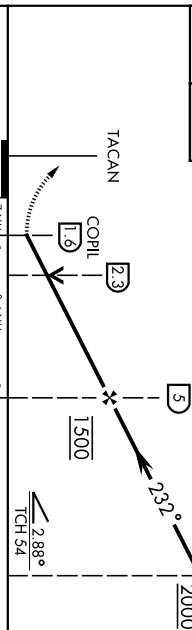


RADAR REQUIRED

EMERG SAFE ALT 100 NM 5300

2000 AWGUS POB [12]

GAYER R-052 POB [12] 2000

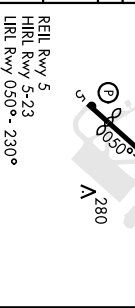


ELEV 218	TDZE 200
----------	----------

Rwy 05 Idg 7501'
Rwy 23 Idg 7501'

232° to TACAN

CATEGORY	A	B	C	D
S-23 *	700/24 500 (500-1/2)	700/50 500 (500-1)	700/50 500 (500-1)	1060-2 1/2 (842 (900-2 1/2))
CIRCLING **	760-1 542 (600-1)	920-2 702 (800-2)	1060-2 1/2 842 (900-2 1/2)	



35°10'N-79°01'W

POFE AAF (KPOB) TACAN RWY 23

